

**Policies Map - North**

© Crown Copyright and database right 2013.  
Ordnance Survey 100019477.  
Scale: 1:8000

**GENERAL**

- Plan Boundary
- Inset Boundary
- Northern City Centre Area Action Plan Boundary
- Allocated Sites

**NATURAL ENVIRONMENTAL ASSETS**

- SAC Special Areas of Conservation (DM6)
- Sites of Special Scientific Interest (DM6)
- CWS County Wildlife Sites (DM6)
- RNR Roadside Nature Reserves (DM6)
- LNR Local Nature Reserves (DM6)
- W Woodland (DM6)

**OPEN SPACE**

- Open Space (DM8)
- Allotments (DM8)

**HERITAGE ASSETS**

- Gateways to the City (DM3)
- Scheduled Ancient Monuments (DM9)
- Area of Main Archaeological Interest (DM9)
- Conservation Areas (DM9)
- HP Historic Parks and Gardens (DM9) (scheduled historic parks and gardens labelled red)

**ENVIRONMENTAL HAZARDS**

- Critical Drainage Areas (DM3, DM5)
- Flood Risk Zone 2 (DM5)
- Flood Risk Zone 3 (DM5)
- Former Landfill Site (DM11)
- HSE Sites (DM11)

**HOUSING**

- Sites for Gypsies and Travellers / Travelling Showpeople (DM14)

**ECONOMY**

- Employment Areas (DM16)

**SHOPPING**

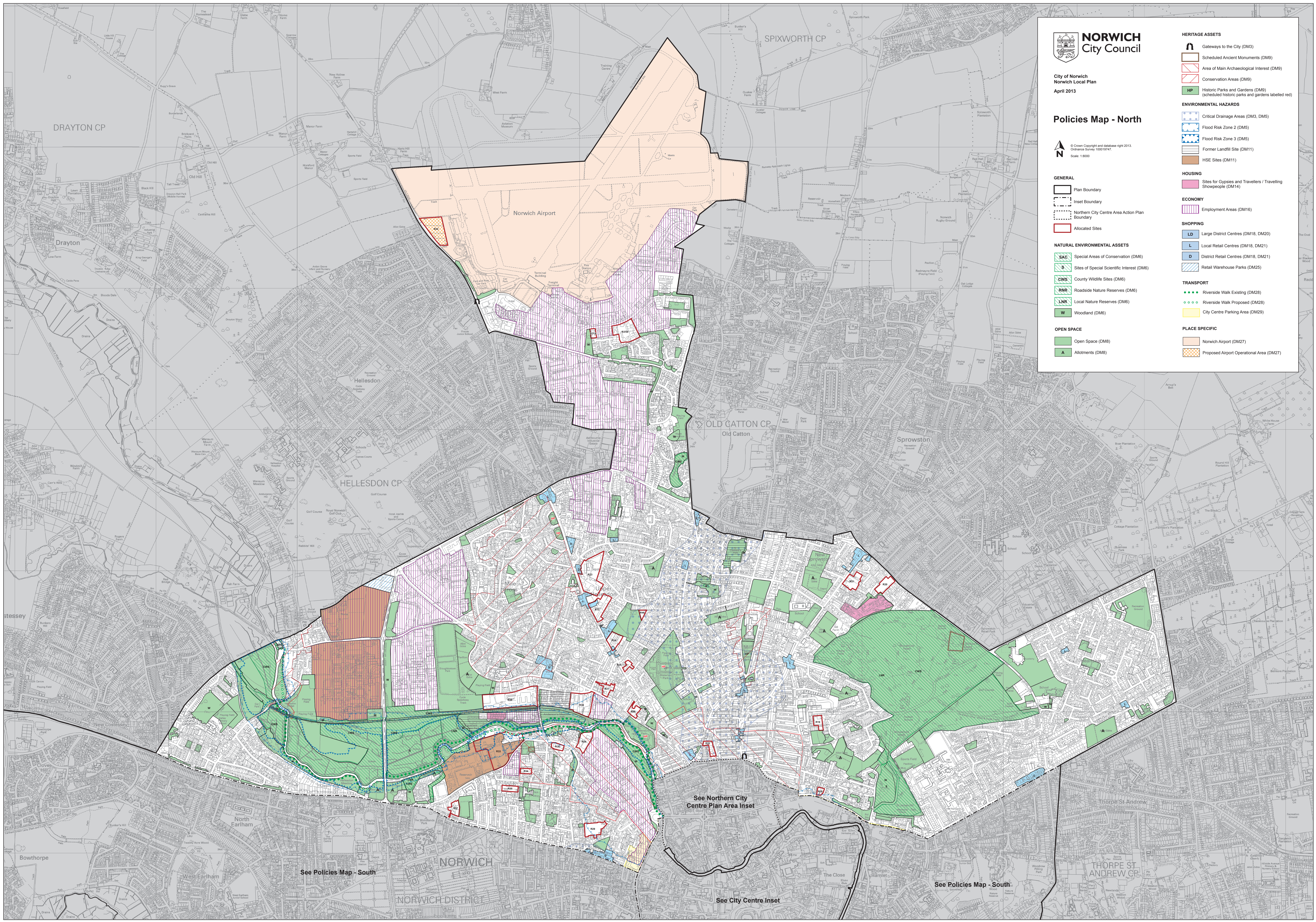
- LD Large District Centres (DM18, DM20)
- L Local Retail Centres (DM18, DM21)
- D District Retail Centres (DM18, DM21)
- Retail Warehouse Parks (DM25)

**TRANSPORT**

- Riverside Walk Existing (DM28)
- Riverside Walk Proposed (DM28)
- City Centre Parking Area (DM29)

**PLACE SPECIFIC**

- Norwich Airport (DM27)
- Proposed Airport Operational Area (DM27)



See Northern City Centre Plan Area Inset

See Policies Map - South

See City Centre Inset

See Policies Map - South