

# Norwich Climate Commission

## 2022-2023 Recap

Lou Rawsthorne  
Emma Smith  
Phil Hunt

Elsbeth Brown, Youth  
Freddie Simpson, Youth  
Ash Manohar, Youth

Emma Hampton  
Anthony Hudson, Architect  
John Jones, Norfolk CC  
Hannah Emmrich, Music, Faith  
Livvy Hanks, Community  
John Moore, Buildings energy  
Nigel Hargreaves, Energy

Martin Mahony, UEA  
Asher Minns, Tyndall Centre UEA  
Sarah Eglington, NWT & FoE  
Katherine Middleton, Ambulance  
Ben Spratling Secretary  
April Dyer Events

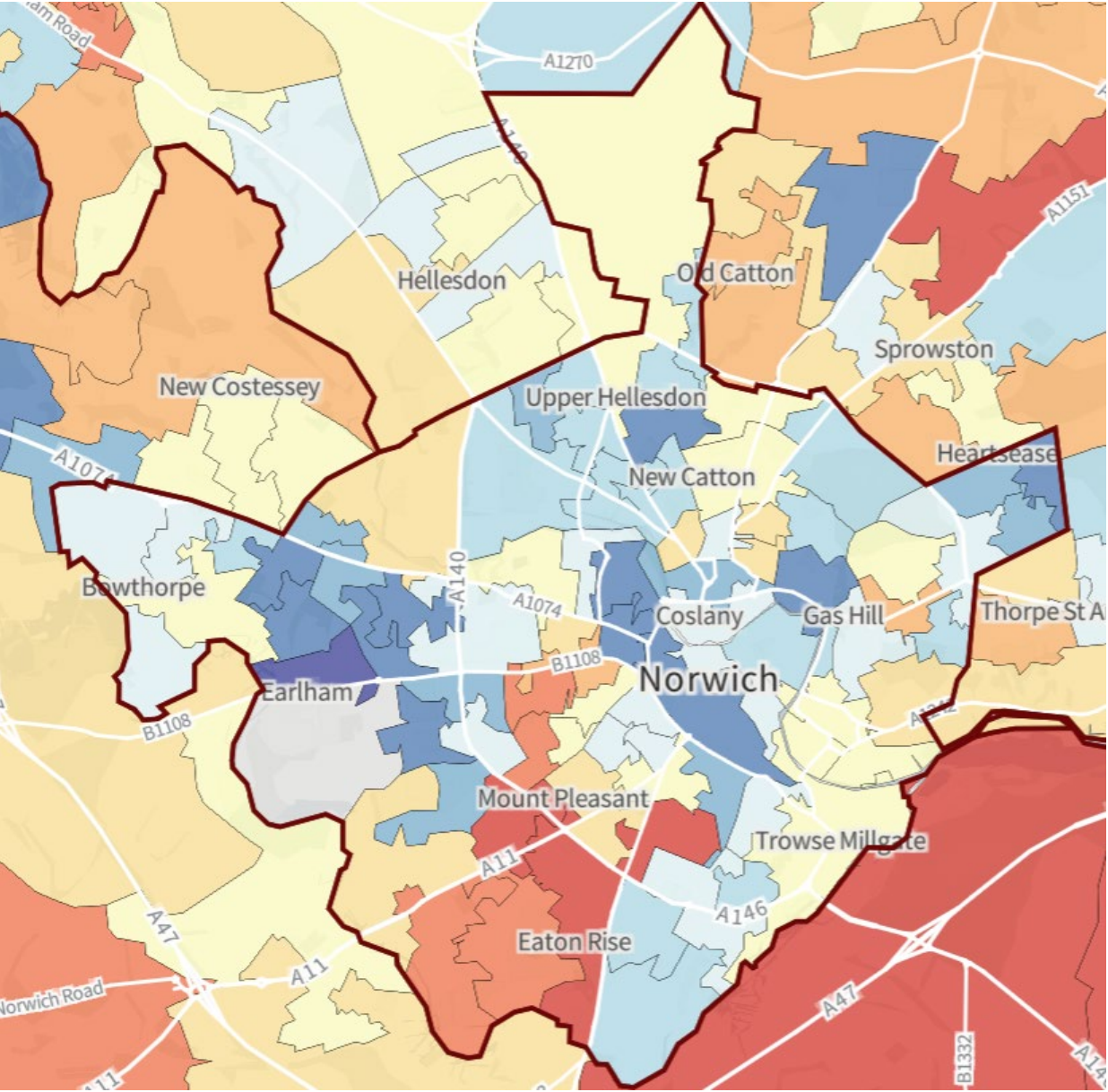
**NORWICH**  
**CLIMATE**  
**COMMISSION**  
norwichclimate.org



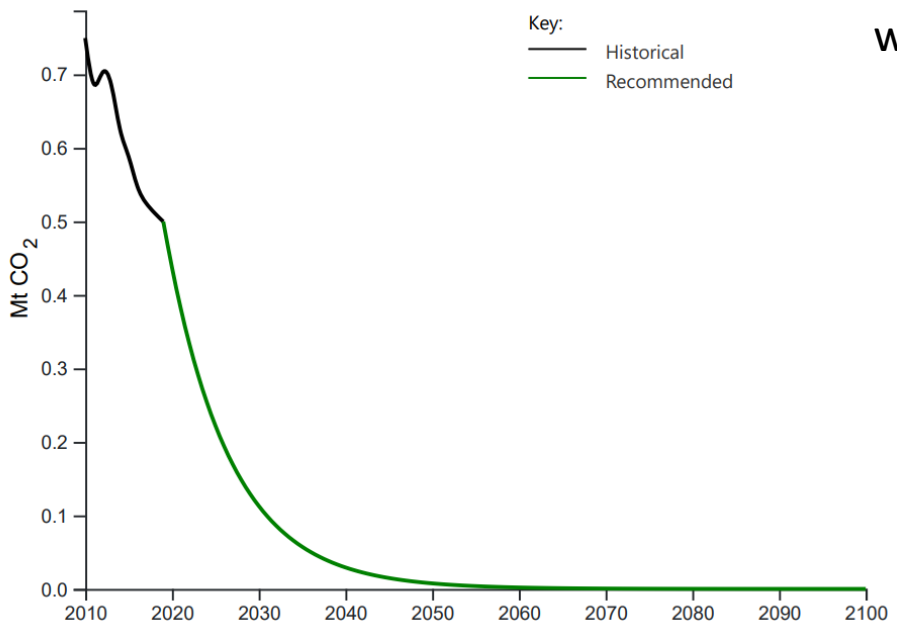
Tyndall<sup>°</sup>Centre  
for Climate Change Research



# Every tonne of CO2 adds to global warming



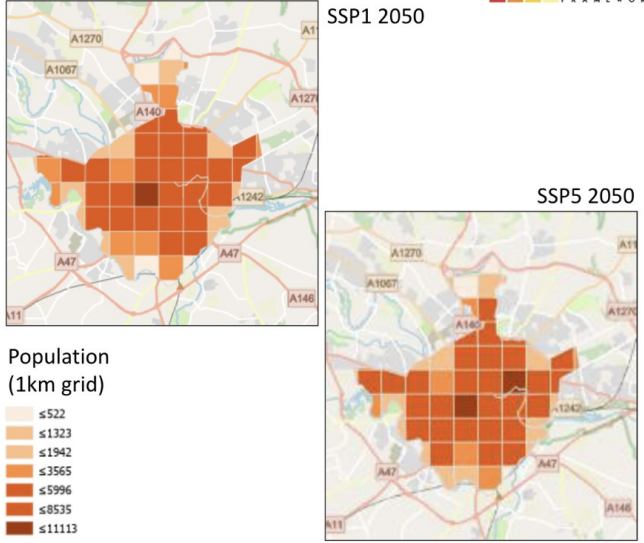
[www.carbon.place](http://www.carbon.place)



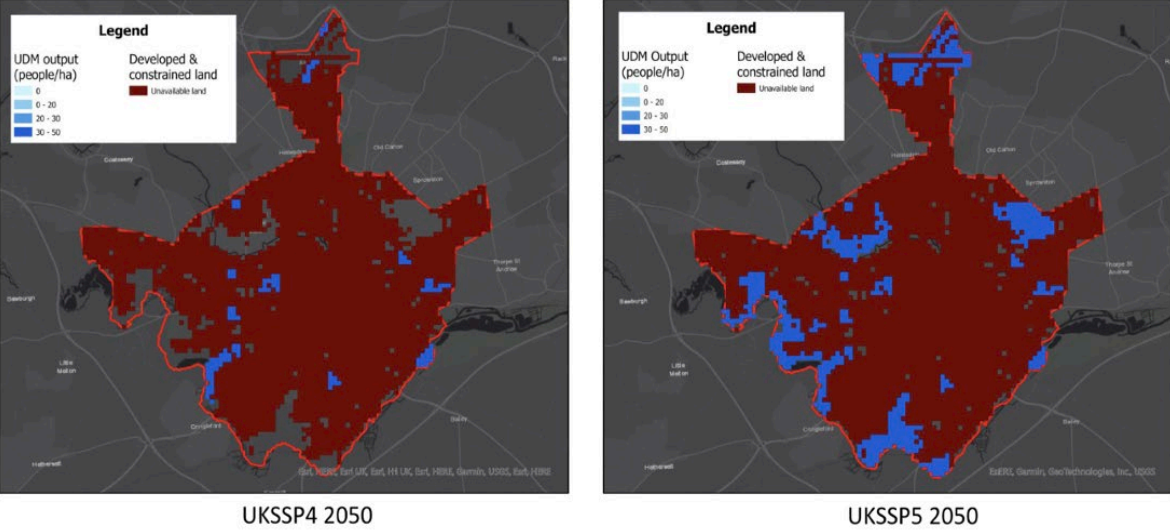
[www.tyndall.ac.uk](http://www.tyndall.ac.uk)

# Every tonne of CO2 adds to climate risk

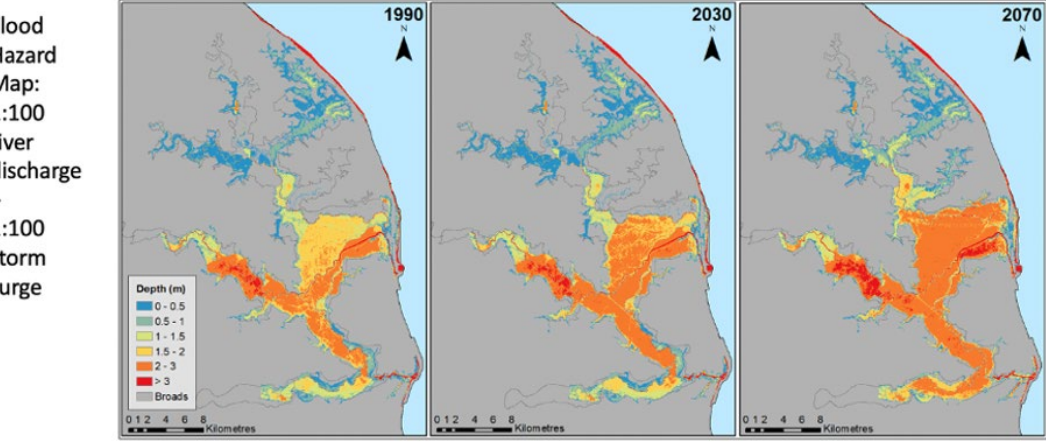
How many people and where will they live?



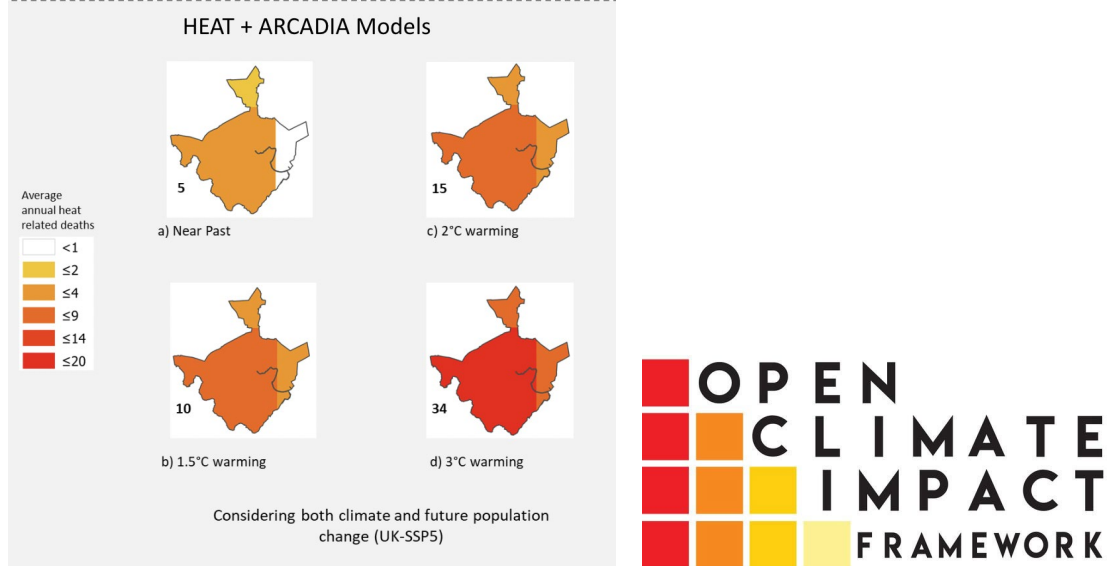
Where might be developed potentially?

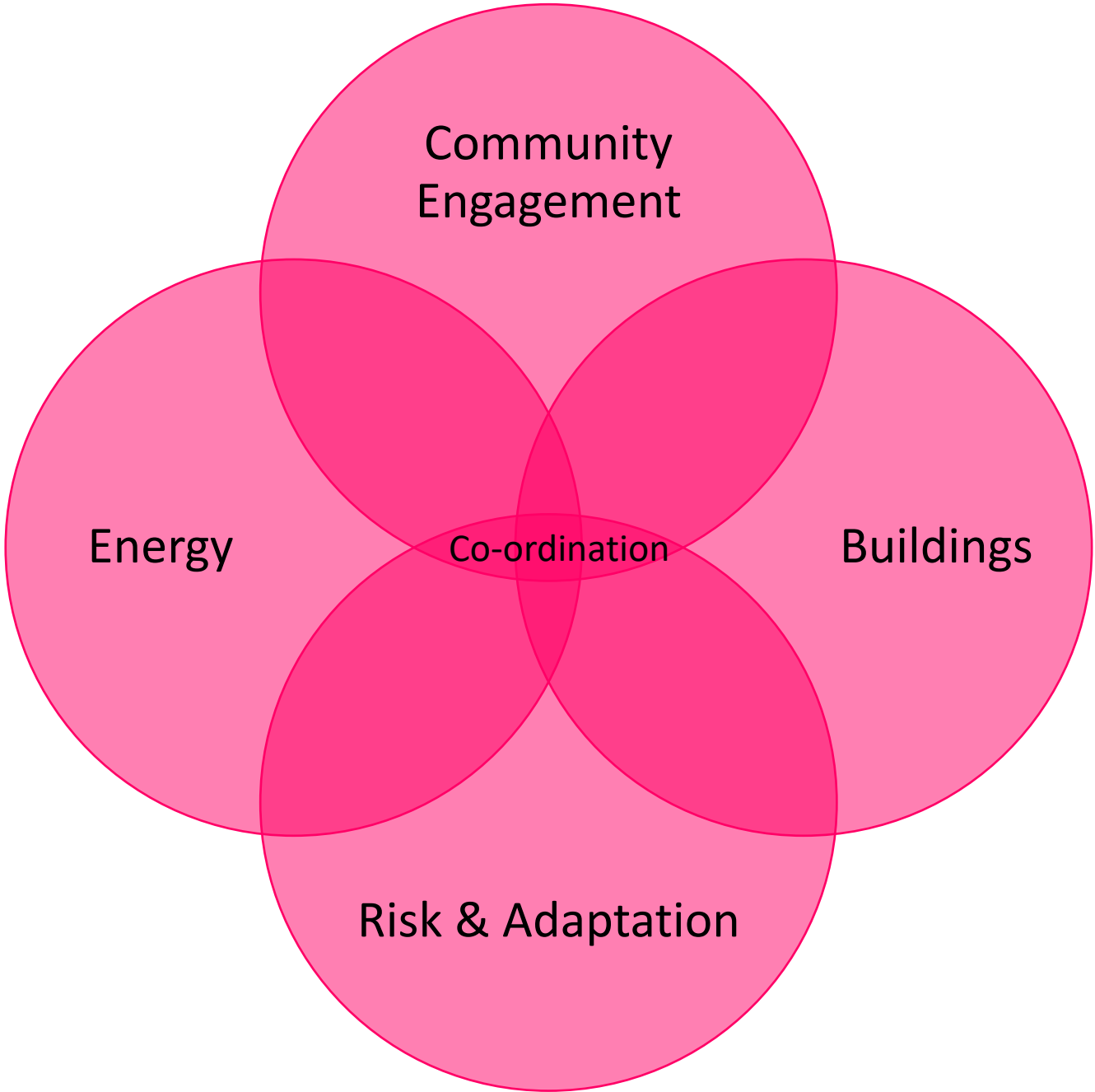


Whitingham Broad is Norwich's Thames Barrier. Up to a limit.

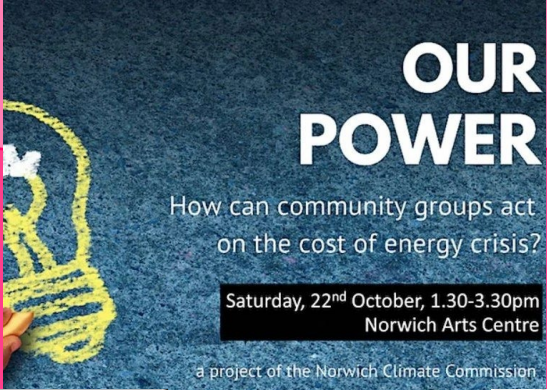


Increase in heat related mortality





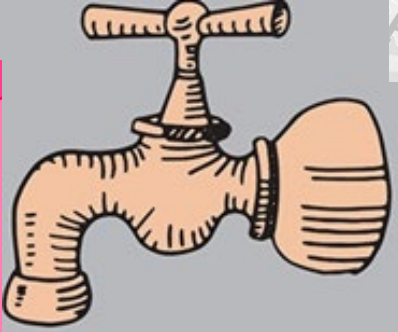
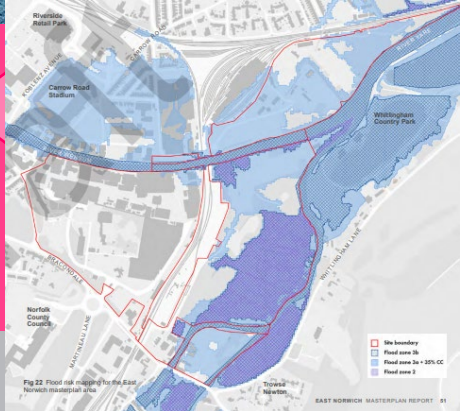
Community



**OUR POWER**  
How can community groups act on the cost of energy crisis?  
Saturday, 22<sup>nd</sup> October, 1.30-3.30pm  
Norwich Arts Centre  
a project of the Norwich Climate Commission

Energy

Buildings



Risk & Adaptation

## **Income / Expenditure**

### **Income**

£25k Norwich CC

£1.8k UEA intern / East of England Climate Commissions

£5k climate risk assessment (£2m OpenCLIM programme)

£6k Asher

LGA / UCL Broadland and S Norfolk £12k

### **Attempted fundraising**

Net Zero Norwich: City-wide solutions for behaviour change (Innovation UK Pioneer Places) – Fast Followers £300k

Domestic Energy Advice Demonstrators

National Lottery Climate and Energy Community Action

### **Expenditure**

Community Workshop

Coordinator 0.1fte

Intern 2022

Greenspaces Biodiversity Tool

EofE Climate Commissions

Climate Risk Assessment

**NORWICH  
CLIMATE  
COMMISSION**

---

## Norfolk and Norwich climate projections and potential adaptation to the impacts

**2022 Working Paper 1**

SOPHIE GIRLING  
UNIVERSITY OF EAST ANGLIA

The Norwich Climate Commission is an independent advisory body set up to bring actors from the public, private and third sectors together to support, guide and track the impact of ambitious climate change and sustainability actions across Norwich. We are a partnership of Norwich City Council and the Tyndall Centre for Climate Change Research at the University of East Anglia.



**NORWICH  
CLIMATE  
COMMISSION**

---

## Stakeholder Engagement and Public Participation in Climate Commissions: Lessons for the Norwich Climate Commission

**2022 Working Paper 2**

BOLUWATIFE IYIOLA  
UNIVERSITY OF EAST ANGLIA

The Norwich Climate Commission is an independent advisory body set up to bring actors from the public, private and third sectors together to support, guide and track the impact of ambitious climate change and sustainability actions across Norwich. We are a partnership of Norwich City Council and the Tyndall Centre for Climate Change Research at the University of East Anglia.



**NORWICH  
CLIMATE  
COMMISSION**

---

## Fuel Poverty and the Net Zero Goal in Norwich

**2022 Working Paper 3**

ESMATULLAH KHYBER  
UNIVERSITY OF EAST ANGLIA

The Norwich Climate Commission is an independent advisory body set up to bring actors from the public, private and third sectors together to support, guide and track the impact of ambitious climate change and sustainability actions across Norwich. We are a partnership of Norwich City Council and the Tyndall Centre for Climate Change Research at the University of East Anglia.



**NORWICH  
CLIMATE  
COMMISSION**

---

## A summary carbon roadmap for Norwich

**2022 Working Paper 4**

ANDY GOULDSON, ANDREW SUDMANT, MILLIE DUNCAN  
UNIVERSITY OF LEEDS  
PCANCITIES.ORG

The Norwich Climate Commission is an independent advisory body set up to bring actors from the public, private and third sectors together to support, guide and track the impact of ambitious climate change and sustainability actions across Norwich. We are a partnership of Norwich City Council and the Tyndall Centre for Climate Change Research at the University of East Anglia.



## 2022-2023

### Community Engagement:

- Stakeholder Survey
- Our Power Community Engagement
- Norwich Theatre's Creative Matters: Climate Stories
- Norwich Science Festival Forum, City Hall, Castle
- Design for Planet Festival October 2023
- Sainsbury Centre climate change curator

### Policy:

City Council strategies and ambitions

Norfolk Climate Change Partnership observer

Briefing written for East of England APPG (another Dec23)

### Buildings:

- How to collaborate with the Norwich Society
- Pilot Design Review Panel by Norfolk County Council
- Ongoing discussions on Norwich East and Planning Directorate
- How to enhance operational and embodied energy performance of buildings to meet Norwich's commitments to net Zero since current Building Regulations do not have this ambition.

### Transport – no progress

March Meeting

Twenty is Plenty

### Youth:

Priorities survey/ MAP

### Biodiversity / Ecosystem Function:

Greenspaces Pilot Broadland & South Norfolk  
East Norwich

### Funding:

Search continues

Good Economy Commission

Scoping...e.g. Department for Education Net Zero Schools

### UEA:

EoE Place-based climate action network workshop July 06 2023

OpenCLIM / Risk Assessment

Other Working Papers/Students

Tyndall Secretariat

Funding

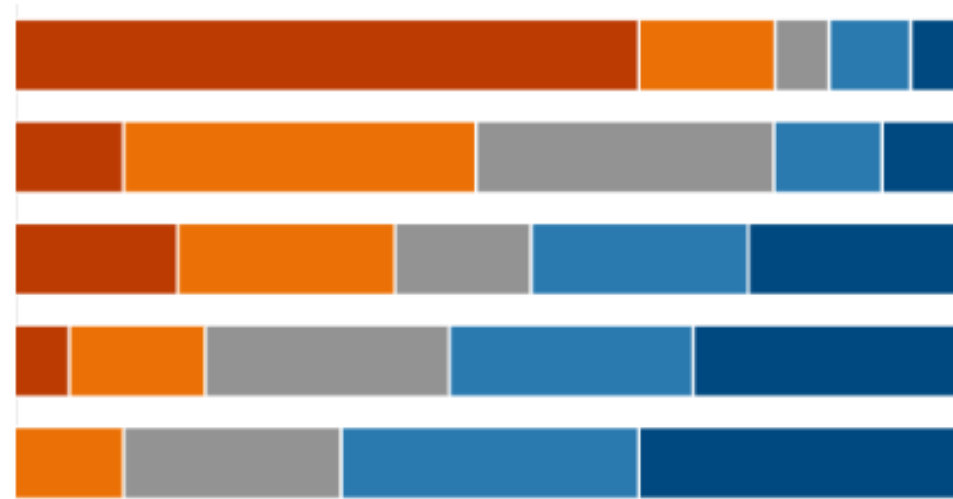


# Who do you think are the main audiences for the Norwich Climate Commission?

## Rank Options

- 1 Norwich Citizens
- 2 Norwich Businesses
- 3 Norwich City Councillors & Offic...
- 4 Youth / Education Institutions
- 5 Local Voluntary & Community O...

First choice ■ ■ ■ ■ ■ Last choice



## Recommendations:

- Embrace the Commission for informing decision-making
- **Traffic and air quality:** Twenty mph is plenty for the entire City. Approx 20% decline in particulates and 25% decline in noise pollution. Strong equity component as inner Ring Road and its A-road spokes cut through poorer neighbourhoods. Endorsed by NICE.
- **Air quality and health:** Norwich last designated a smoke control area in 1972. Rapid rise in wood burners and particulates, even arsenic. All of City as with 20 is plenty.
- **New buildings / East Norwich / Anglia Square:** Be bold with East Norwich so it is not energy obsolete and maladapted before it began.
- ***The Norwich Standard.*** Planners stake-out their own requirements to developers. Adaptation *and* mitigation. *Low Carbon Offsite Fabrication Facility / Building Enterprise Park* for circular economy supply of East Norwich and Norfolk's new homes.
- **Economic Growth:** 6% of Norwich's GDP was spent on energy in 2020, 4.8% in 2017. Net zero reduces Norwich's total energy bill by £22 million p.a. in 2050 while creating 558 years of employment equivalent (see Working Paper 4)
- **Resilience & Adaptation** in addition to low-carbon