

## Report for Information

<b>Report to</b>	Norwich Highways Agency Committee 22 March 2012	<b>Item</b> <b>11</b>
<b>Report of</b>	Head of city development services	
<b>Subject</b>	On Street Parking Enforcement Monitoring Report	

---

### **Purpose**

This report describes the performance of on-street parking enforcement for the financial year 2011/12 until the end of January 2012.

### **Recommendations**

That the committee receives the available performance results and notes that income is above budget and issuing of penalty charge notices are similar to previous years.

The Committee acknowledges the projected surplus but this is subject to end of year recharges for single status outcomes and subsequent CDS recharges.

### **Financial Consequences**

There current projected surplus of £63,721 and end of January 2012 and there is a forecasted end of year surplus of £98,596 for 2011/12.

### **Strategic Objective/Service Priorities**

The report helps to achieve the corporate priorities of a strong and prosperous city and cost consciousness and the service plan priority to manage financial risks associated with the provision of on-street parking enforcement.

### **Contact Officers**

Gary Hewett Parking Manager (operations) 01603 212453

### **Background Documents**

None

# Report

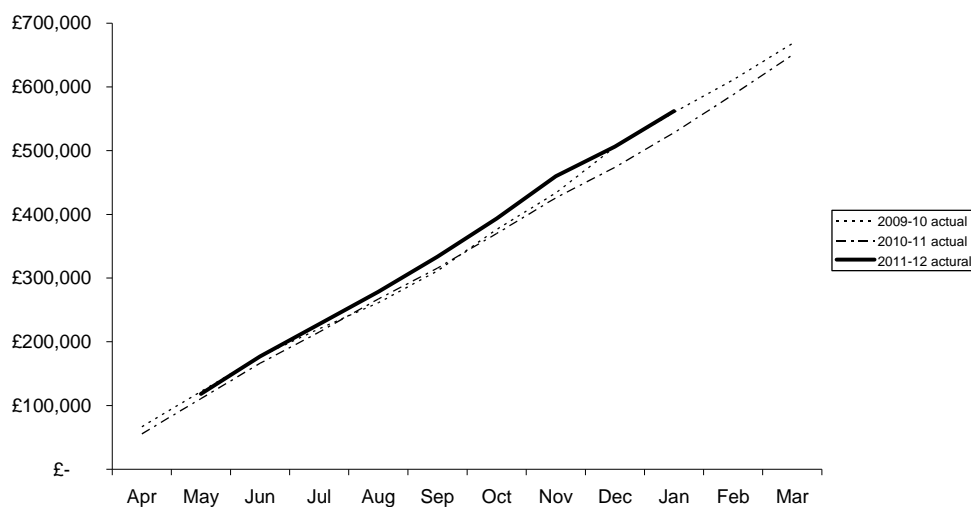
## Background

1. The City Council Parking Services carries out the parking enforcement in Norwich on behalf of the County Council, through an Agency Agreement. The action needed to support the Agency agreement is set out in the 2010/11 Transport Strategic Priority Plan, which provides for performance assessment.

## Performance Monitoring of Parking Enforcement

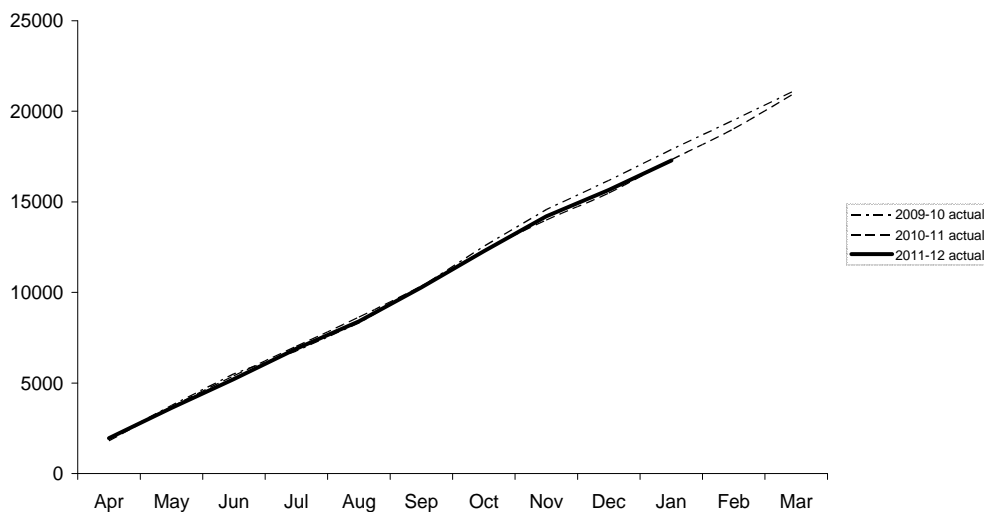
2. Penalty Charge Notice (PCN) income (see below): income is 6% above previous year for the same period

**On-street cumulative PCN income 2011/12**



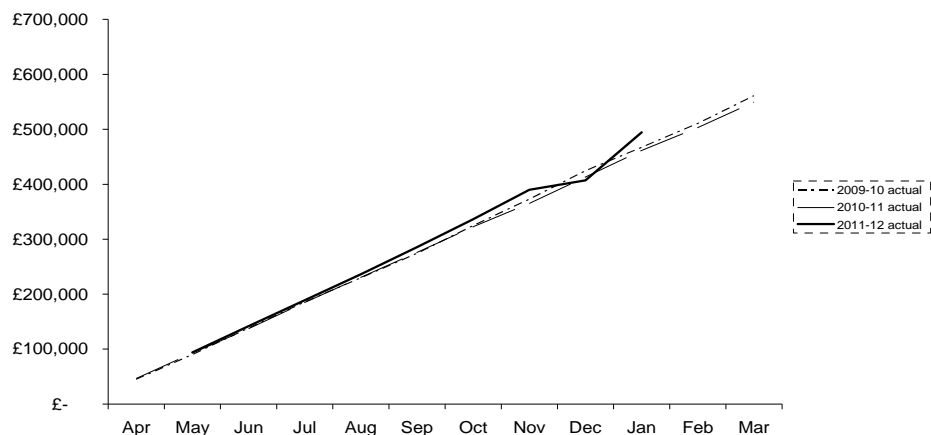
3. PCN tickets issued:- the number of on-street PCNs issued is currently matching last year for the same period.

**On-street cumulative PCN issued 2011/12**



4. On Street Pay and Display Income (see below):- income as at January 2012 is 7% above previous year for the same period. There was a drop in income during the December as City Hall was closed for the Christmas week. However, this was corrected in the January.

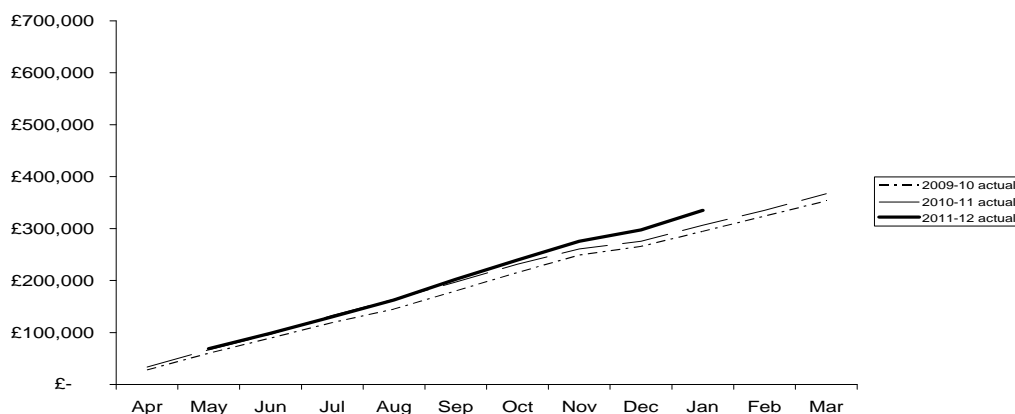
**On-street cumulative pay and display income 2011/12**



US

5. Residents Permit income (see below): income as at January 2012 is 8% above previous year for the same period

**On-street cumulative permit income 2011/12**



6. Balance of income versus costs: this shows a surplus of £98,596 at the end of January 2012. However, this uses the projected recharge figures which may vary for 2011/12 financial year end.

