

Report for Information

Report to Norwich Highways Agency Committee
28 July 2011

Report of Head of City Development Services

Subject Highway Performance Monitoring of the Highways Agency Agreement

Item
10

Purpose

This report describes the performance of the Highways Agency Agreement, for the financial year 2011/2012 up to the end of June 2011.

Recommendations

That the Committee receives and notes the available performance results.

Financial Consequences

Good performance affects local authorities' performance assessments (e.g. via the Local Transport Plan) and hence has a bearing on the levels of government funding available.

Strategic Objective/Service Priorities

The report helps to achieve the corporate priorities of a strong and prosperous city, safe and healthy neighbourhoods and opportunities for all. It helps achieve the service plan priority to deliver the 2011/12 LTP/NATS maintenance and capital improvement programmes.

Contact Officer

Andy Watt

01603 212691

Background Documents

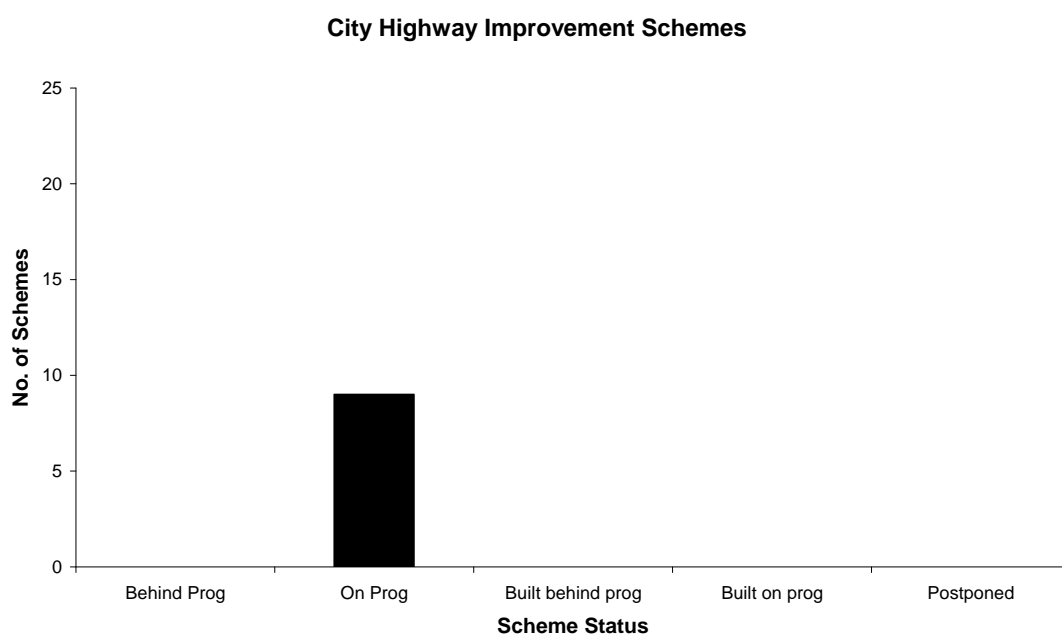
None

Background

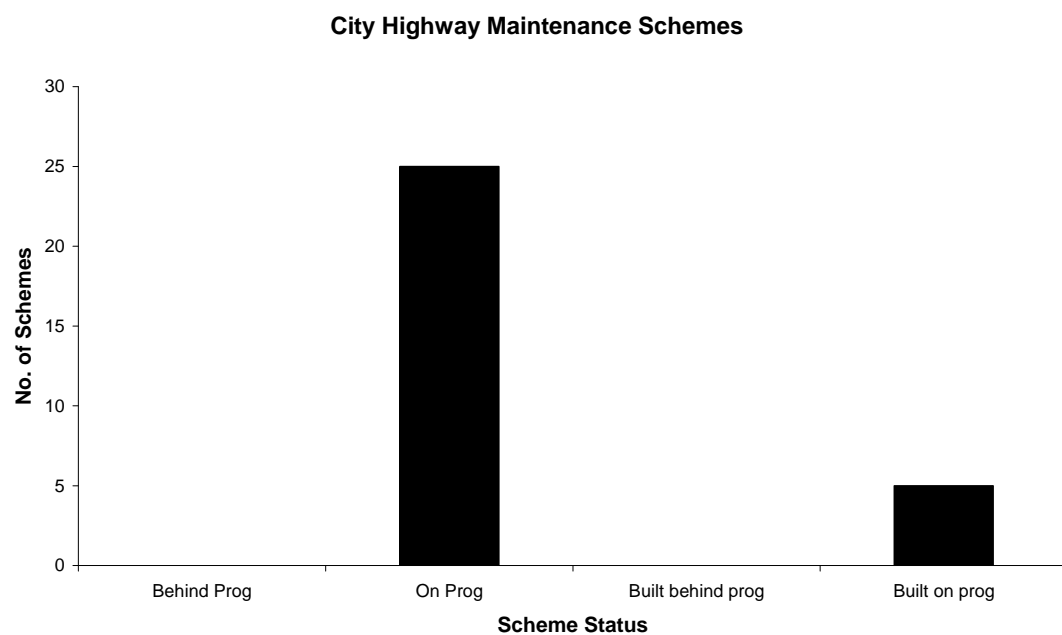
1. The City Council discharges highway duties in Norwich on behalf of the County Council, through an agency agreement.

Programme delivery

2. *Capital Improvement schemes*: There are 9 schemes in the 2011/2012 programme. The graph below scheme status at the end of June.

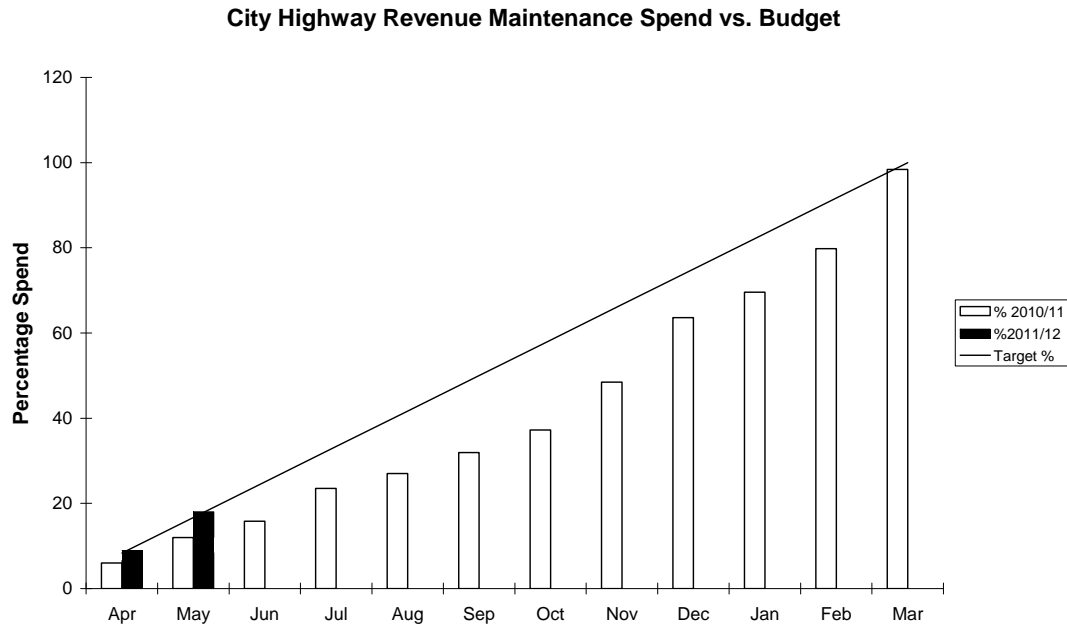


3. *Structural maintenance*: There 30 schemes listed in the capital maintenance programme. Five schemes had been completed by the end of June.



4. *Routine maintenance*: Approximately 18% of the routine maintenance budget

had been spent to the end of May¹. In previous years routine maintenance expenditure was skewed towards the end of the year due to winter maintenance expenditure. As most winter maintenance is now to be undertaken by the county council following the agency agreement review a more linear profile or one skewed to the beginning of the year due to grass cutting expenditure is expected.



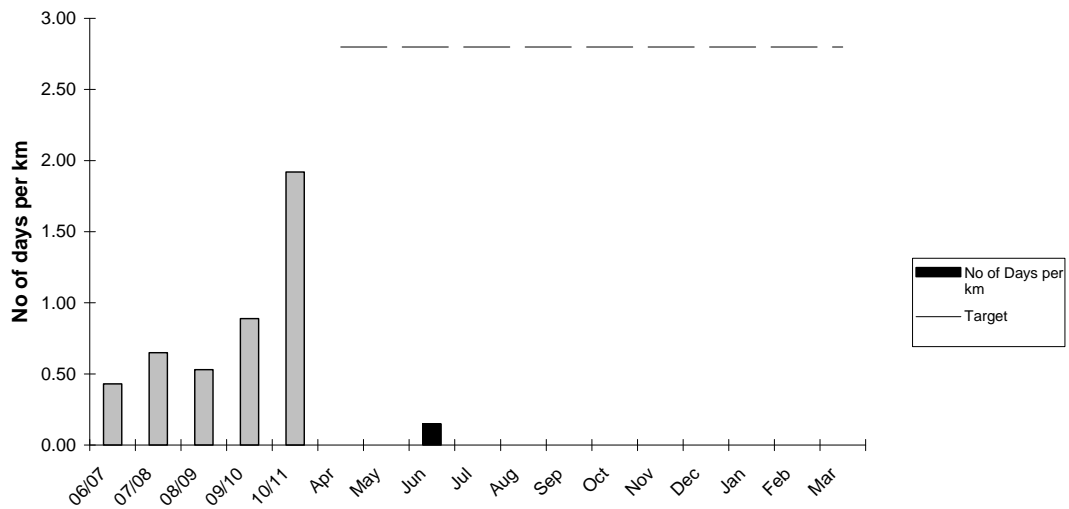
Performance indicators

5. Data is collected monthly for a number of national “Best Value” Performance Indicators (BVPIs).

- ‘Local PI (formerly BVPI 100) - Number of days temporary traffic controls or road closure on traffic sensitive roads caused by local authority roadworks per km of traffic sensitive road’: The figure is 0.15 to the end of June, whereas the end of year figure for the City should be no greater than 2.80; see graph on next page. Resurfacing work programmed for this year is likely to lead to put pressure on and increase the amount of traffic sensitive working particularly in the first 6 months because of a need to spend the Government’s winter damage funding (forming part of the structural maintenance programme) by the end of September.

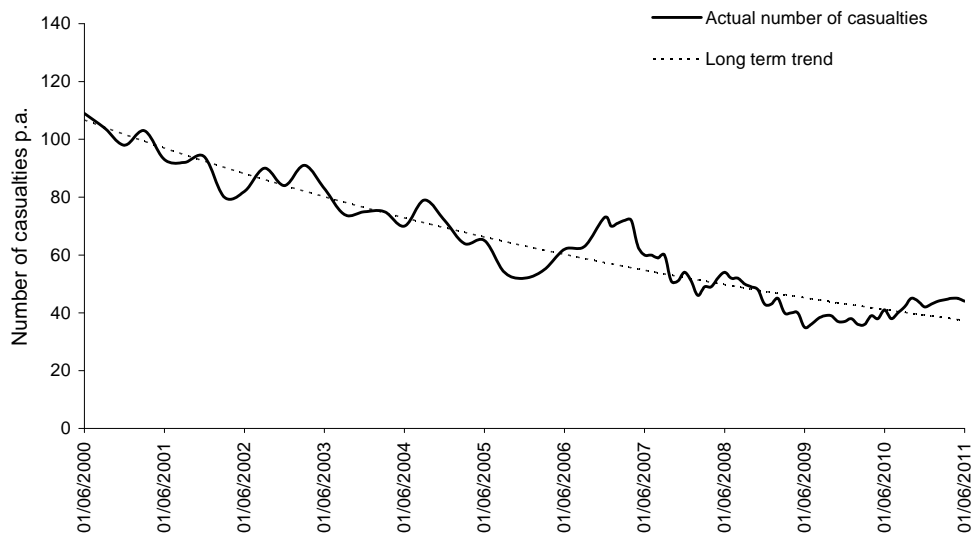
¹ Data to the end of June is not yet available at the time of preparing this report.

Number of Days of Temporary Traffic Controls or Road Closures on Traffic Sensitive Roads Caused by Highway Authority Streetworks per Km of Traffic Sensitive Roads

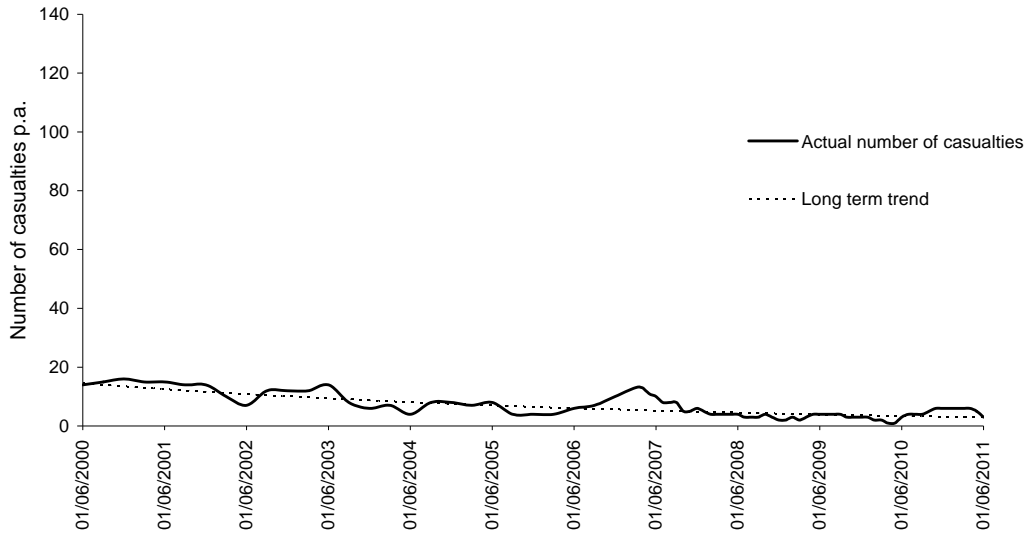


- 'BVPI 165 – Percentage of pedestrian crossings with facilities for disabled people' the City figure is currently 100%.
- 'BVPI 99 – Road accident casualty reduction' – the figures for the City area to the end of May suggest a levelling in a recent upward trend in overall and child killed and seriously injured and slight injury numbers. The overall long term trend in all cases remains downward.

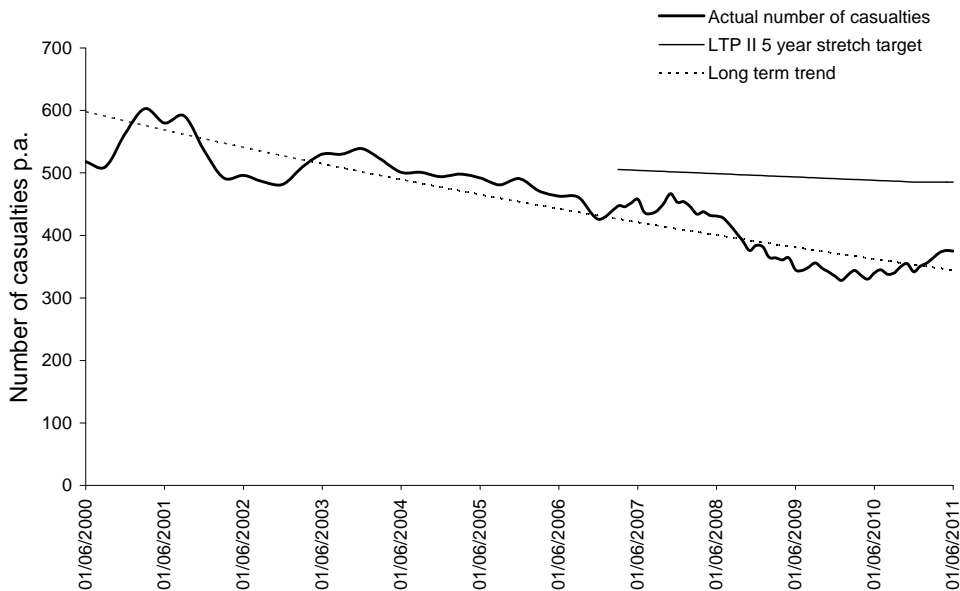
No. of killed & seriously injured



No. of children killed & seriously injured



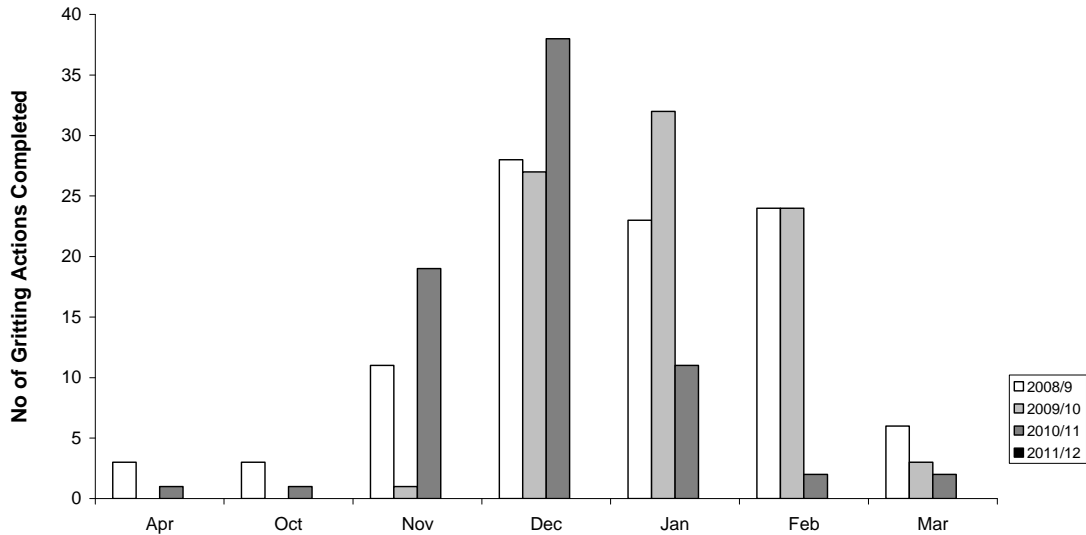
City No. of slight casualties



6. Data is also collected monthly for the following local performance indicators (LPIs) to contribute towards the councils' service plans.

- *'The percentage of repairs to dangerous damage to roads or footways which were carried out within 24 hours'* is 100% for 2011/12 to the end of June. 231 emergency works orders were made in the period 1 April to the end of June.
- *'Percentage of priority routes gritted within three hours of mobilization from the depot'* - The Winter maintenance season commences in lasts from October to April. Gritting was not required in April. Winter gritting is now being carried out by the County Council following the highways agency agreement review.

Winter Maintenance Gritting Actions Completed

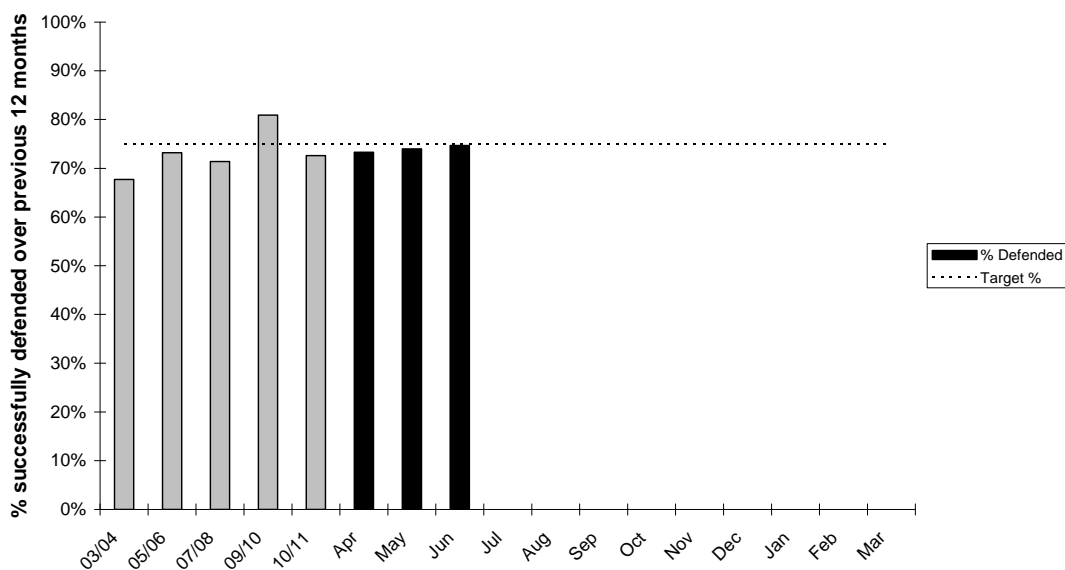


Accident Claims

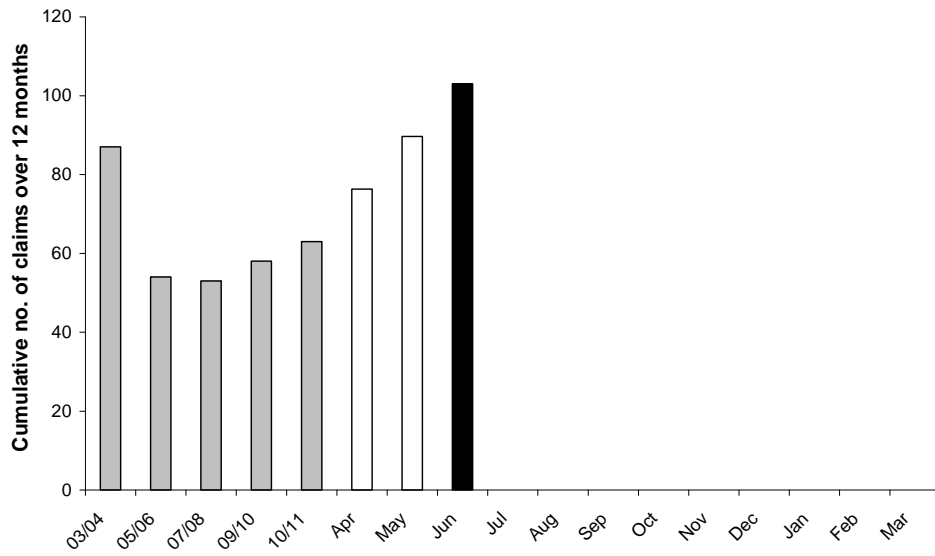
7. The number of claims received and the settlement rate of claims for highway and personal injury claims are monitored.

- *'Percentage of personal injury claims successfully defended'* is 75% for the claims settled to the end of May, compared to a target of 75%. 72 claims have been received for the year ending 30 June 2011/12.
- *'Percentage of non personal injury claims successfully defended'* is 93% for the claims settled to the end of May, compared to a target of 75%. 31 claims have been received for the year ending 30 June 2011/12.

% of Personal Injury Claims Successfully Defended



No of Accident Claims in City



8. There has been a significant increase in the number of claims recently. This appears to be mirrored countywide.