

Norwich Police response to proposed use of new powers available in the Police Reform and Social Responsibility Act 2011

Introduction

The Police Reform and Social Responsibility Act 2011 allows The Licensing Authority to make use of two measures aimed at reducing late night alcohol related disorder: Early Morning Restriction Orders ("EMROs") and Late Night Levy's ("The Levy"). I have been asked to consider the appropriateness and benefits of Norwich City Council utilising these regulations to address on-going problems with disorder in the Norwich Night Time Economy (NTE).

An EMRO is a power introduced by the previous Government (which has not yet been commenced) which, under existing provisions, would enable licensing authorities to restrict the sale of alcohol in the whole or a part of their areas between 3am and 6am on all or some days. The 2011 Act amends existing provisions to allow EMROs to be applied more flexibly between midnight and 6am. Licensing authorities will be able to make an EMRO in relation to problem areas if they have evidence that the order is appropriate for the promotion of the licensing objectives.

The levy will allow licensing authorities to raise a contribution from late-opening alcohol retailers towards policing the late night economy. It will be a local power that licensing authorities can choose whether to adopt for their areas. The licensing authority will also choose the period during which the levy applies, between midnight and 6am on each night. Non-exempt premises licensed to supply alcohol in this period will be required to pay the levy.

Changes in regulations will also allow Licensing Authorities to apply full cost recovery providing the ability to set their own fees for licensing regulation costs. This change will allow the Authority to include direct costs when they calculate fees which will include:

- Processing costs and general administration
- Costs of representations by licensing, environmental health, health and safety, trading standards

- Meeting costs
- Costs of enforcement

Taken together, these changes are very significant and it is believed that the decision to implement any of the new regulations should be considered together to achieve the appropriate balance between reducing crime and disorder, enhancing safety and controlling the social / economic impact.

This report adds to a previously submitted document which was prepared for Norwich City Licensing Committee in 2012. This updated report contains much of the same content but is extended to include up to date analysis and to also reflect revised guidance from the Home Office regarding EMROs.

Norwich Night Time Economy (NTE)

The 2003 Licensing Act led to the de-regulation of licensing law. Amongst many changes to Licensing Laws, the headline was a relaxation of closing times for licensed premises introducing the opportunity for late night drinking. The Act was intended to promote four fundamental licensing objectives:

- a) the prevention of crime and disorder;
- b) public safety;
- c) the prevention of public nuisance; and
- d) the protection of children from harm.

From 2005, licensed premises across the Country were able to apply for later licenses, but it was not until August 2009, that establishments in Norwich began to open beyond 4am. A limited market is believed to be the reason for this slow uptake and it is our belief that it has only been other subsequent changes to the Norwich NTE that have caused clubs and bars to consider later opening as a viable option. These subsequent changes include the provision of low cost hotels adjacent to the NTE, the marketing of Norwich as a Stag / Hen party destination, the decline of the NTE elsewhere in the region, an alternative offer with less nightclubs (where dancing

is the main offer) to more bars (where drinking is the main offer) and other adult entertainment (i.e. strip bars).

The August 2009 date is significant for the purposes of this paper. The Police are better able to understand the impact of late night entertainment in the Norwich NTE if comparisons of crime and disorder levels are made before and after this date.

In the period before August 2009, the Norwich NTE had a different profile to that which it has now. It was the case that a smaller number of large clubs dominated the late night offer with the public using a number of pubs and bars prior to club entry. The Police previously experienced peaks of disorder as the public moved from pub to club and when the larger clubs closed simultaneously. This bottleneck effect was not unique to Norwich and removal of this flashpoint was one of the intended consequences of the 2003 act. The Policing operation before 2009 was much smaller than it is now. The earlier closure of the licensed premises allowed officers to return to patrolling the rest of the City much sooner than they are able to now – an issue this paper will return to later.

In the period that followed August 2009 a number of premises began to open later into the evening. It appeared that the movement of one establishment to later hours of opening caused others to follow suit so as to avoid giving a rival premises competitive advantage. Norwich now has around 55 premises that open beyond midnight (figures regularly fluctuate as premises frequently open and close) and has become a seven day a week destination. These later hours have led to a trend of people arriving later to the NTE having 'pre-loaded' with drinks at home. Pre-loading typically occurs within the younger group who are at the greatest risk of subsequent harm through assault or injury. It is common for my officers to find persons who are drunk before they have entered a club / bar in the NTE. This issue of 'pre-loading' has been identified nationally as a consequence of later opening hours but is supported in Norwich by the new provision of four off-licenses in the NTE, two of which open to 4am.

Norwich's NTE now has a national reputation and is a popular destination for stag / hen weekends or visits from social groups. The availability of cheap hotels and the decline of the NTE in other towns and cities have all contributed towards Norwich attracting crowds of over 12,000 people on peak nights. Whilst Prince Of Wales

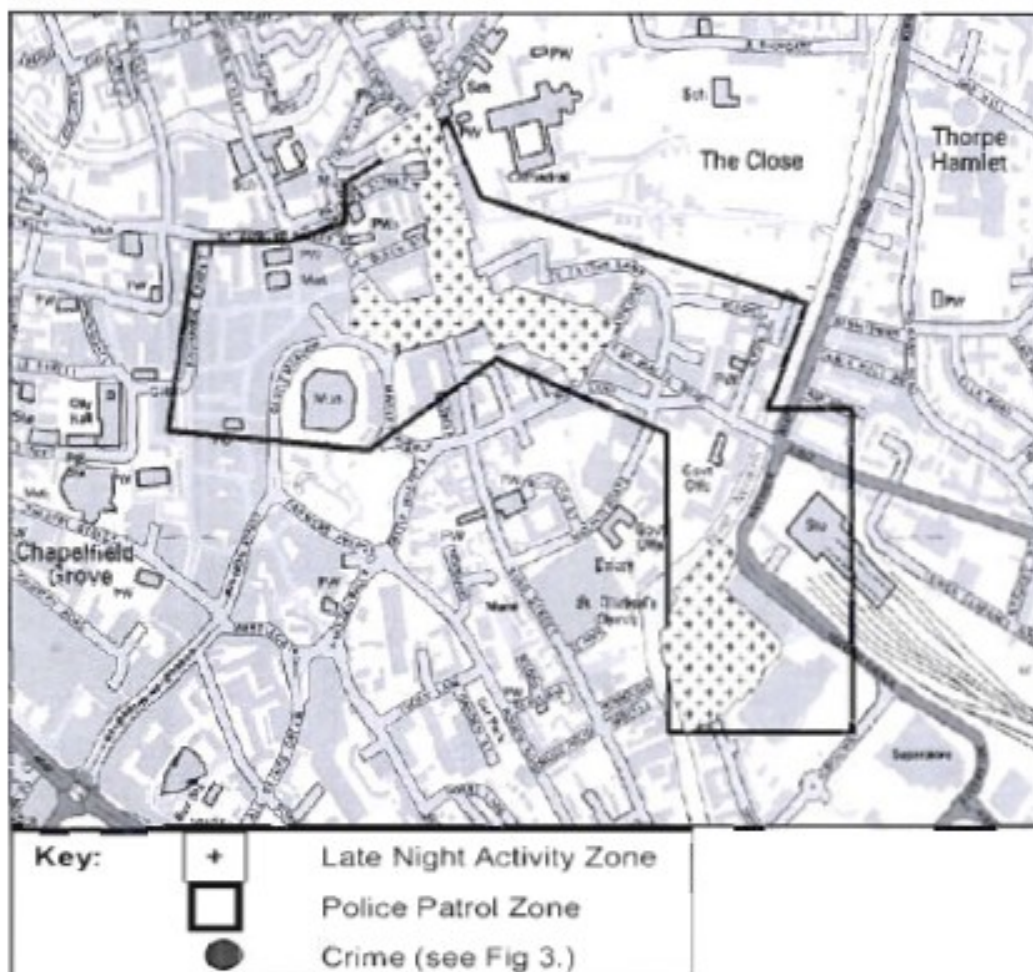
Road is the hotspot for the NTE, many bars outside of the Council defined late night activity zone open into the early morning. This has caused a persistent level of complaints about noise and nuisance from those living or working nearby and also serves to stretch the Police resources over a wider area which subsequently dilutes our presence. It is our view that the late night entertainment can be best managed if it is concentrated into one area. Doing so minimizes impact upon the local community and greatly assists the efforts of the police and other emergency services.

The growth in the NTE that has been described above has made it necessary for the Police to increase the resources they deploy each week in the NTE. We now direct an additional 12,000 police officer hours per year to the NTE compared to pre 2009. These officers are abstracted from other duties and their deployment on NTE duties represents a reduction in the amount of time being spent patrolling elsewhere. The figure of 12,000 hours does not include the significant number of patrols undertaken by the Special Constabulary in the NTE or the work of our dedicated Licensing Team who work with Licensees to try and achieve the licensing objectives.

Crime and Disorder in the Norwich NTE

This report will now present analysis on the impact that extended licenses have had on crime in Norwich NTE. The data used considers crime and incident levels before and after August 2009 for the reasons stated above.

The Constabulary has geographically defined the NTE based upon crime and incident data. This area differs significantly to the Council Late Night Activity Zone upon which planning decisions are based. For the purposes of this report the Crime data relates to incidents that have taken place solely in the Constabulary NTE area as displayed below.



Crime Comparison Pre and Post Later Licensing Regulations by Hour Banding

In August 2009 clubs in Norwich started making use of a change in licensing regulations by staying open later than previously seen. The following tables compare crime levels by banding for the 30 months prior the later opening and the 30 months following. The most significant and concerning rises are shown in red. To assist with the understanding of how the Police categorise violent crime, a flowchart can be found in appendix 5. This flowchart explains the difference between the various categories of assault shown below and how such offences are classified.

CRIME IN THE NORWICH NIGHT TIME ECONOMY				
	02/2007 to 07/2009	08/2009 to 01/2012	Difference	Percentage Difference
Burglary Dwelling	4	10	6	150.0%
Burglary Non-Dwelling	35	22	-13	-37.1%

PROTECT

Priority Crime Other	2	1	-1	-50.0%
Arson	2	0	-2	-100.0%
Priority Violence				
• Murder				
• Manslaughter	557	616	59	10.6%
• GBH				
• ABH				
Robbery	14	14	0	0.0%
Theft from Motor Vehicle	29	8	-21	-72.4%
Theft of Motor Vehicle	4	5	1	25.0%
Fraud and Forgery	13	3	-10	-76.9%
Hate Crime	32	32	0	0.0%
Sexual Offences	25	26	1	4.0%
Theft	665	700	35	5.3%
Volume Crime Other	18	6	-12	-66.7%
Criminal Damage	159	189	30	18.9%
Volume Violence				
• Common Assault	176	290	114	64.8%

Table 1: Crimes in Norwich NTE (occurred within police public order polygon and between 21:00 and 06:00)

In the following tables, the above data is broken down by time banding (21:00-00:00; 00:00-03:00; and 03:00-06:00) to show crime levels before and after August 2009. Most notable are the significant increases in the 03:00-06:00 banding. (Please note that volume violence relates to minor assaults with no injury whilst priority violence relates to offences where injury is recorded. Volume criminal damage relates to all offences of criminal damage except where they are caused by arson. Volume theft relates to street theft type offences such as pickpocket crimes or thefts of personal property.) The Police concludes that the rise in crime beyond 3am in the Norwich NTE is directly linked to later sales of alcohol since the relaxation of the Licensing Act

CRIME IN THE NORWICH NIGHT TIME ECONOMY 21:00 – 00:00				
	02/2007 to 07/2009	08/2009 to 01/2012	Difference	Percentage Difference
Priority Violence	113	76	-37	-32.7%
Theft Other	207	148	-59	-28.5%
Volume Criminal Damage	39	43	4	10.3%
Volume Violence	40	49	9	22.5%

Table 2: Norwich NTE crime 21:00-00:00

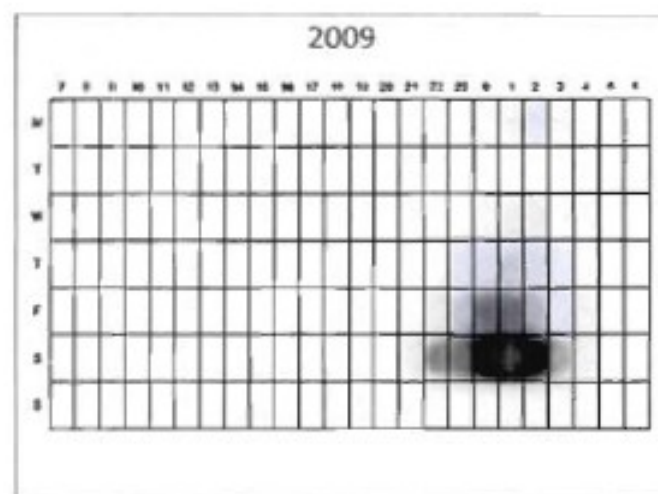
CRIME IN THE NORWICH NIGHT TIME ECONOMY 00:00 – 03:00				
	02/2007 to 07/2009	08/2009 to 01/2012	Difference	Percentage Difference
Priority Violence	368	367	-1	-0.3%
Theft Other	374	374	0	0.0%
Volume Criminal Damage	90	88	-6	-6.4%
Volume Violence	105	145	40	38.1%

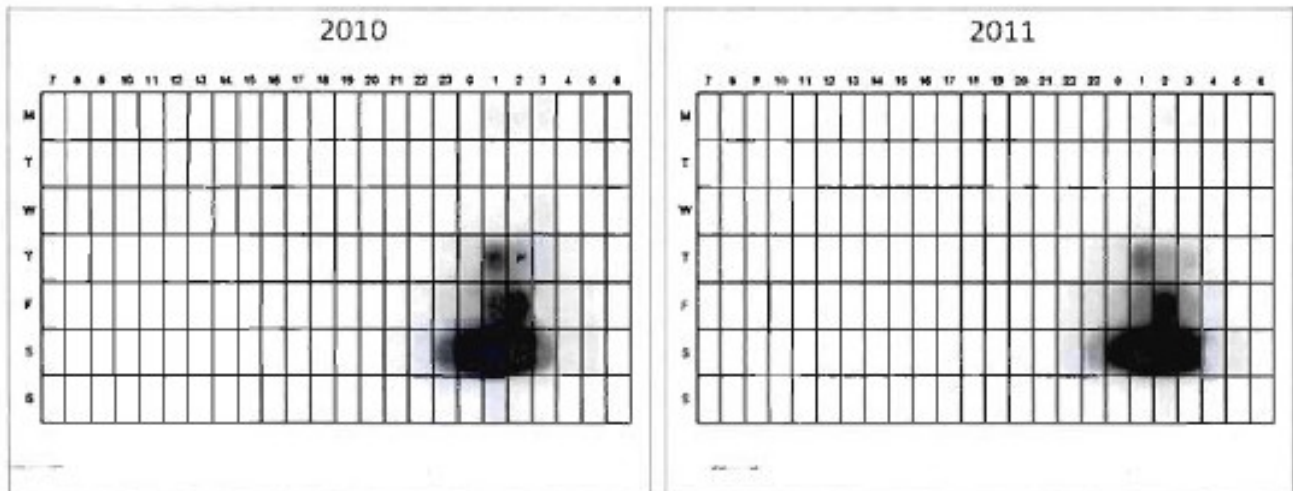
Table 3: Norwich NTE crime 00:00-03:00

CRIME IN THE NORWICH NIGHT TIME ECONOMY 03:00 – 06:00				
	02/2007 to 07/2009	08/2009 to 01/2012	Difference	Percentage Difference
Priority Violence	76	173	97	127.6%
Theft Other	84	178	94	111.9%
Volume Criminal Damage	26	58	32	123.1%
Volume Violence	31	96	65	209.7%

Table 4: Norwich NTE crime 03:00-06:

The Licensing Act changes have coincided with a growth in the NTE during weekdays. Friday and Saturday nights account for just 55% of all crime in the NTE with Thursday evenings getting increasingly close to the same level of demand as Friday evenings. The charts below display the peak times and days of the week for crime in the Night Time Economy.





The table below is based upon crime records in the last two calendar years. The table breaks down all recorded crime by day of the week to show the distribution. The table also bands crime distribution by time for each day of the week to show when offences typically occur.

Day	Time period	Time distribution of all NTE crime for each day of the week	Distribution of NTE crime by day of week
Sunday	9pm to midnight	36%	8%
	midnight to 3am	44%	
	3am to 6am	20%	
Monday	9pm to midnight	25%	8%
	midnight to 3am	44%	
	3am to 6am	31%	
Tuesday	9pm to midnight	40%	5%
	midnight to 3am	48%	
	3am to 6am	12%	
Wednesday	9pm to midnight	25%	8%
	midnight to 3am	43%	
	3am to 6am	33%	
Thursday	9pm to	21%	16%

	midnight		
	midnight to 3am	53%	
	3am to 6am	25%	
Friday	9pm to midnight	27%	22%
	midnight to 3am	54%	
	3am to 6am	19%	
Saturday	9pm to midnight	21%	33%
	midnight to 3am	59%	
	3am to 6am	20%	
Total		786	100%

Crime in the NTE is consistent throughout the year. There is little seasonal variation with only New Years Eve, and Bank Holiday weekends typically showing crime levels above the norm. It is always expected that the majority of crime in the Norwich NTE or indeed any night time economy will be at weekends in the period between midnight and 3am. This period coincides with the peak level of footfall and occupancy inside nightclubs. However the table above taken over a 2 year snap shot shows that a significant amount of crime takes place outside these peaks times. It is realised that any EMRO application will not reduce these peak times for violence unless it is set at a time so early that the economic and social impact of the EMRO would cause it to be disproportionate. However, the above information suggests that an EMRO aimed at dealing with disorder between 3am and 6am would impact upon a significant proportion of the crime suffered and at the times when the noise and associated problems have the biggest impact upon other communities.

The Cost of Crime Linked to the Night Time Economy

Using a Home Office 'cost of crime' calculator, analysts are able to estimate the cost of responding to the crime that occurs in the Norwich NTE. The below table demonstrates the costs to three groups; the Police, all criminal justice agencies and whole societal cost.

The table considers Norwich's NTE between August 2008 and January 2012, based on the Home Office method. Not all crime types are included.

	08/2009 to 01/2012	Est. police cost in response	Est. total CJS cost in response	Est. global cost to society
Burglary Dwelling	10	£15,124	£29,854	£85,806
Burglary Non-Dwelling	22	£14,120	£28,828	£158,846
Violence	906	£1,122,522	£2,605,538	£15,130,037
Robbery	14	£54,280	£160,799	£450,187
Theft from Motor Vehicle	8	£829	£1,337	£22,938
Theft of Motor Vehicle	5	£580	£1,425	£29,632
Sexual Offences	26	£245,909	£532,158	£5,072,763
Criminal Damage	189	£73,715	£122,212	£839,965
Total		£1,527,079	£3,482,151	£21,790,174

Table 7. Cost of crimes linked to Norwich's NTE.

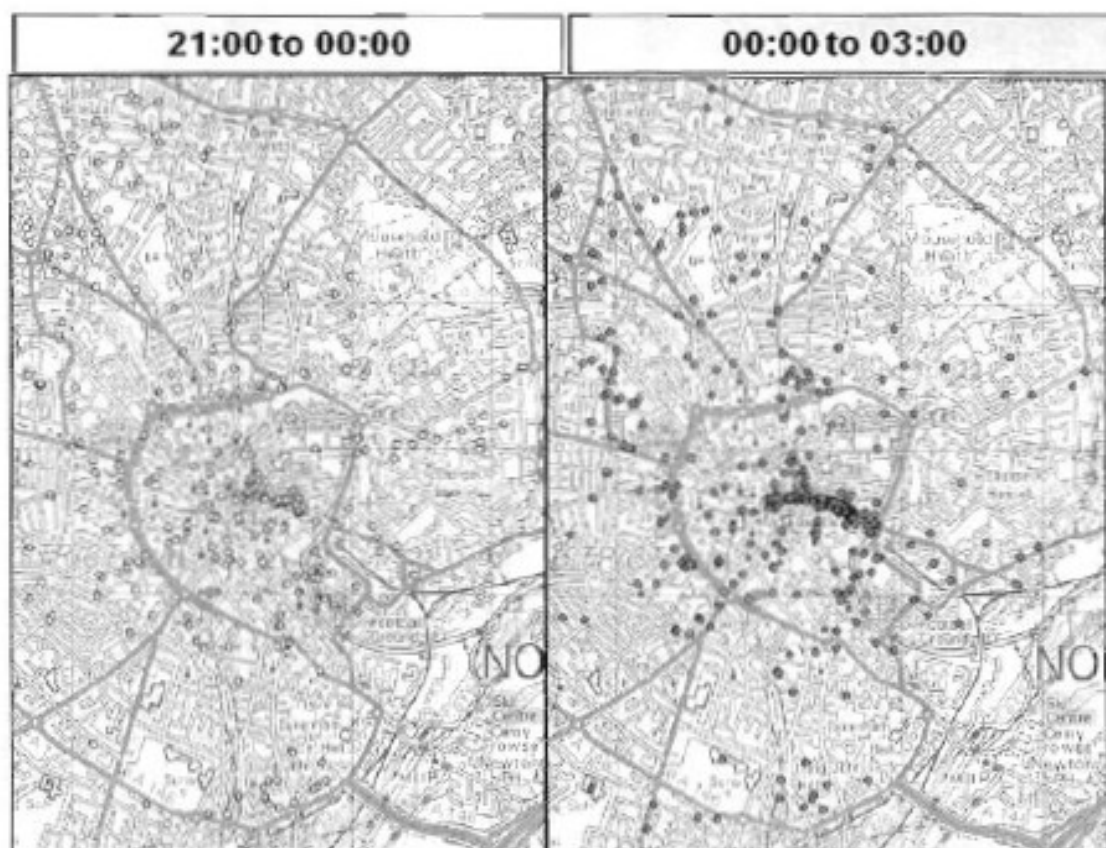
It should be noted that the above table only considers the policing costs of responding to crime. It does not include the Police response to reports of anti-social behaviour or the cost of preventive work or patrols which prevent disorder from occurring. It is estimated that 48,000 officer hours per year are spent patrolling the Norwich NTE. The later hours of opening and increased midweek trade cause this figure to be 12,000 officer hours per year higher than the period before late night licences.

It is the Police's view that this huge investment prevents a significant amount of crime and that a reduced level of resourcing would result in a considerable crime rise. The Police view is that their approach to the NTE masks many of the challenges and problems that the NTE presents.

It can be concluded that late night opening has led to higher crime, notably in the period beyond 3am. This crime increase is not a displacement from earlier in the evening but an addition to the crime that has always occurred before 3am.

Crime Location

The crime connected to the NTE is not restricted to the areas immediately outside bars, clubs and takeaways. A significant amount of crime occurs as the public makes their way home causing those in residential areas to be victims of noise nuisance and crime (notably damage offences). Analysts have been able to map crime associated with the NTE in the below diagrams. Crime typically clusters on the main pedestrian routes out of the City Centre:





The Police conclude that whilst crime and disorder associated to the NTE is at its peak in the City Centre, those living in residential areas throughout the City have also been found to experience the consequences of later licences. Greater control of the NTE in the City Centre could therefore also impact upon the crime levels in the rest of the City.

Other Measures of Disorder

The Police carry out a range of activity aimed at ensuring that crime does not occur. The data presented so far in this document has been based just upon recorded crime and does not paint a complete picture of the other interventions the Police put in place to proactively prevent crime.

The Police have at their disposal a range of other powers which this report will now briefly consider.

Section 27 Notices

Section 27 of the Violent Crime Reduction Act 2006 gives officers the power to ban a person from a defined area for a set period up to 48 hours, if it is felt they may cause alcohol-related violence.

This is a zero tolerance power and no actual offence needs to have been committed (and therefore no crime is recorded). The person is issued with a Direction to Leave notice outlining the terms of the ban. Anyone refusing to leave or returning during the designated time can be arrested. The Police regularly issue these notices in the form of a ticket to persons in the Norwich NTE. Police Officers issue these notices to persons who they believe will commit crime and disorder to exclude them from the immediate area. The Police typically issue the notices in the early part of the evening to prevent subsequent disorder later in the night .

The Police can present data which shows the dates and times where Section 27 Notices have been issued in the Norwich NTE (Appendix 7). In the period between 29th April 2012 and 27th October 2012, 404 such notices were issued in Norwich with 87 issued after 3am in the morning. A full break down of times and dates is included in Appendix 7.

The Police believe that the sheer numbers of section 27 notices that require issue are a strong indicator of the problems faced in the Norwich NTE. More section 27 notices are issued than reports of crime recorded, but the Police opinion is that significantly more crime would take place if it were not for this proactive power being used. Whilst a significant amount of notices are issued after 3am, it is the Police believe that the issue of notices earlier in the night prevents significant amounts of post 3am crime. A statement from a Police Inspector with several years of experience of Policing Norwich NTE is attached in appendix 9. This statement outlines the circumstances in which section 27 notices are issued and why this is necessary to prevent disorder later in the evening.

Drunk and Disorderly

Section 91(1) of the Criminal Justice Act 1967 makes it an offence to be guilty whilst drunk in a public place of disorderly behaviour. This offence is classified by the Police as 'non-recordable' meaning that it is not classified as a crime and does not contribute towards the

crime figures included in the above analysis. Persons committing the offence are committing acts at the lowest end of the spectrum of offences which police arrest for.

However, this is a very important power for the Police as it allows them to take action whilst offenders commit lower end acts thus preventing more serious offences occurring later. It is arguably a step up from the issue of a Section 27 notice.

In Appendix 6, the Police are able to present data on the number of arrests for Drunk and Disorderly after 3am in the Norwich NTE in the period 1st August 2012 to 26th February 2013. During this short time, some 54 persons were arrested for this offence after 3am with many more arrested before 3am to prevent subsequent disorder.

The most prominent Offence location is Prince Of Wales Road. However, the Police report that Prince Of Wales Road is a hotspot not just because of the number of licensed premises but because it is the location that most persons leaving premises elsewhere go to for transport and refreshments.

The statement from a Police Inspector in Appendix 9, provides further context for the drunk and disorderly arrest figures.

Police Recommendations

The Police are very aware that the powers available under the Police Reform and Social Responsibility Act 2011 are significant and should not be used without justification. We are mindful that the NTE brings many benefits to the City, making it appropriate that any recommendations made are proportionate and necessary to reduce the risk of harm.

This report has largely focused upon crime levels in the Norwich NTE, but it should be noted that the NTE represents one of the greatest risk areas for the Constabulary. It is the case that a death occurs in the NTE with the frequency of less than every 18 months. Causes of these events range from homicide, accident, traffic collision or overdose. Increasing the safety of the NTE is a key priority for the Police for reasons greater than just crime levels.

In an effort to reduce violence in the NTE, the Constabulary and partners have put in place many measures to improve safety:

- We have increased the number of officers on patrols by 12,000 hours per year.

- We have established a dedicated licensing team which works full time to improve standards in licensed premises.
- We have worked with the trade to establish a Best Bar None Scheme aimed at increasing safety in the NTE.
- We have held large scale operations called 'Impact Nights' where up to 80 officers work on peak nights to enforce a 'zero tolerance' approach to disorderly behaviour and crime.
- We have produced advice material advising young person about the dangers of binge drinking.
- We have carried out test purchase operations in bars to detect underage sales of alcohol.
- We have carried out multi-agency visits with partners to improve standards inside premises.
- We have deployed overt CCTV vans to detect violent offences and deter offences.
- We have recently applied for a licence review resulting in the closure of one bar due to poor management.
- We have carried out drugs operations both through passive drugs dogs and using drug tracking devices as conditions of entry at clubs.
- We have banned troublesome customers from the NTE through Anti-Social Behaviour Orders and use of bail conditions.
- We have worked with bars to improve safety by putting in place measures such as plastic glasses and CCTV reviews.
- We have worked in partnership with other groups such as the SOS bus and Street Pastors to make the NTE safer.
- We have advised hotels in the NTE on how to reduce disorder and set up intelligence sharing arrangements.

The above measures have been successful in restricting the amount of crime in the NTE but injury and risk of harm still continues into the early hours. The Police believe that they have used a wide variety of measures to achieve the licensing objectives, working on their own and with the licensing trade. However, crime and disorder beyond 3am remains at a concerning level and we believe it is appropriate to consider the Levy and EMRO powers to address this problem. The Constabulary can see particular advantage in the EMRO as a means of reducing late night violence.

The Police and Norwich City Council have for some time been considering the powers available under the Police Reform and Social Responsibility Act (2011) and have met on several occasions to discuss the matter. Within these discussions we have made clear our intention to work with Licensees and others involved in the NTE to reduce violent crime. Therefore, in the summer of 2012 (with the agreement of NCC Licensing Committee) the Police began to brief late night premises about the new powers and commence a process of informal consultation with them. The aim of the consultation was to advise relevant parties about the powers available and to provide the opportunity for feedback to be given to the Police / Council about their use.

That Informal consultation started with a joint letter being sent by The Chief Executive of Norwich City Council and the Chief Constable of Norfolk Constabulary to all licensees in the City. The letter (in appendix 2) advised licence holders on the new powers (Levy and

EMRO) that will soon be available and the current challenges with late night violence in Norwich. Only one response was received from Licensees in response to the letter.

A series of meetings were held with licensees aimed at increasing their awareness of the new powers and ascertaining if they could further help to reduce late night disorder. The result of this process was an agreement from all clubs on Prince Of Wales Road with a licence later than 4am to bring forward the time for last sale of alcohol to 4am starting the first weekend of August 2012. The conversations with the late night clubs revealed a very limited market after 03:30hr with most clubs making no profit beyond 4am. Many licensees reported only staying open to ensure that other clubs that also opened later did not get a competitive advantage earlier in the night when profits are achieved.

Consultation has continued throughout recent months via street engagement with licensees and the Constabulary Licensing Team and also through dialogue at the Norwich Licensing Forum. The Police are yet to receive an adverse comment about the voluntary 4am closures.

Impact of Voluntary 4am Closures

At the time of writing this report (March 2013) the voluntary closures have been in place for seven months. This allows the Police to now analyse the impact with absolute confidence in the significance of the results. The Police are able to compare a period between the start of August 2012 and 26th February 2013, with the same period in August 2011 to 26th February 2012. This comparison finds that crime and incidents during which the voluntary closures have been in place have reduced by 17.5% (217 incidents). More detailed analysis follows, but the Police conclusion is that this provides conclusive evidence of the benefits of earlier closure (whether voluntarily or by EMRO) in terms of crime, safety and disorder levels.

The tables below break down the above findings into more detail, by showing the time of the day that crime and incidents occur. Please note that the term 'crime' relates to all recorded incidents that fit the definition of 'crime' as defined by National Police Crime Recording Standards (NCRS) whereas the term 'incidents' is a completely different count and will mostly include reports of anti-social behaviour that do not meet the classification of being a crime (i.e. rowdy behaviour).

Crime and Incidents August - 26th February Inc.			
Hour	2011-12	2012-13	% change
00	169	155	-8.3%
01	254	196	-22.8%
02	265	230	-13.2%
03	289	222	-23.2%
04	142	153	7.7%
05	88	42	-52.3%
06	36	28	-22.2%
Grand Total	1243	1026	-17.5%

Officers working in the NTE have reported positive benefits from the earlier closures finding that the public order operation does finish earlier with the City returning to normality much sooner. It is the Police's belief that this earlier closure will have a long term benefit in terms of crime and disorder reduction and that it represents good evidence of the potential benefits of an EMRO.

The Police are also able to map where crime and incidents occur and this analysis has shown that hotspots have not moved location since the voluntary arrangement has been in place (no displacement effect). The map below shows crime and disorder incidents linked to the Night Time Economy during the past seven months when the voluntary order has been in place.

Norwich NTE Zone crime and CAD August 2012 – 26th February inc. 2013 overview



Hotspots for crime and disorder remain in the following three zones:

- Zone 1 – London Street / Bank Plain / Queens Street/ Upper King Street / Tombland.
- Zone 2 – Prince Of Wales Road / Rose Lane / St Vedas Street.
- Zone 3 – Riverside Development¹ including all premises facing onto the pedestrian walk way that commences on the junction of Kobenz Avenue and leads through the entertainment complex onto Wherry Road / Koblenz Avenue / Wherry Road.

The amount of crime and incidents reported to the Police during evening hours in these three zones between the months of August and February in both 2011/12 (pre voluntary agreement) and 2012/13 (post voluntary agreement) are detailed in the below tables:

Crime by hour of day in Norwich NTE – August 2011 to February 26th 2012

Crime and CAD Combined	19:00hr	20	21	22	23	0	1	2	3	4	5	6	7	Grand Total
Zone 1 Bank Plain, London St, Queens St, Tombland, Exchange St, Upper King St, Bedford St	18	16	26	22	29	33	36	46	53	24	16	11	10	340
Zone 2 Prince of Wales, Rose Lane, St Vedast St	19	26	27	45	55	74	157	160	186	92	60	21	11	933
Zone 3 Riverside, Wherry Road	21	12	14	12	6	2	4	1	9	9	11	9	17	127
Grand Total	58	54	67	79	90	109	197	207	248	125	87	41	38	1400

Crime by hour of day in Norwich NTE – August 2012 to February 26th 2013

Crime and CAD Combined	19:00hr	20	21	22	23	0	1	2	3	4	5	6	7	Grand Total
Zone 1 Bank Plain, London Street, Queens Street, Tombland, Exchange Street, Upper King Street, Bedford Street	19	20	11	18	32	33	46	40	39	29	9	7	8	311
Zone 2 Prince of Wales Rd, Rose Lane, St Vedas Street	25	34	42	34	44	72	111	160	144	99	25	12	12	814
Zone 3 Riverside, Wherry Road	5	7	11	2	2	7	3	4	10	5	9	1	10	76
Grand Total	49	61	64	54	78	112	160	204	193	133	43	20	30	1201

The Police have observed significant benefits caused by the voluntary reduction in hours, but the above tables' show that a considerable number of incidents continue in these areas.

¹ Note that the nightclub on the Riverside Development has only recently re-opened meaning that the incidents highlighted have only occurred in recent weeks. A clear hotspot would show if the incidents that have occurred continued at the same frequency for a seven month period.

In providing the above data, the Police have sought to only include incidents of crime and disorder which can be linked to the activity in the NTE and drunkenness. The Police can provide reports of the incidents which have occurred after 3am where required. A spreadsheet summary of the incidents is included in Appendix 4. This spreadsheet gives a brief overview of where offences are taking place and the type of crimes being committed. The Police believe that it provides strong evidence of the need to address disorder after 3am in the Norwich NTE.

The Police can also provide a collection of CCTV evidence outlining the challenges of Policing the Norwich NTE. The footage details both evidence of violent crime and also general footage of noise, disturbance, litter, and risks seen each week by front line Officers.

The Police can also present additional evidence in the form of a series of statements submitted by Officers of Inspector rank outlining their observations of the Norwich Night time Economy. The Inspectors submitting these statements regularly lead the late night Policing Operations in Norwich and provide an insight into the issues faced on the street during the early hours. These statements record the impact of problems that are not recorded as crime and incidents such as litter, urinating and vomit in the street, noise, broken glass, and disorderly behaviour. The statements can be found in Appendix 3.

The voluntary reduction in hours has shown convincing early signs, and it is the Police's view that an hour should be set for last time of opening to reinforce this position. We find that before the Voluntary closures the NTE had grown too close to the Day Time Economy (DTE) and we can evidence where, for example, commuters heading towards Norwich Train Station have shared the streets with person exiting clubs in a disorderly manner. We also know that local residents living close to the NTE still suffer considerable disturbance and believe that an earlier end to the evening would enhance their quality of life. As evidence of this last point, we have attached in Appendix 1 comments made by residents of Stuart Gardens (residential area adjacent to the NTE) concerning a planning application for the change of use of a business premises to a food and drinking establishment. It is our view that the comments paint a picture of the problems encountered when living near the NTE.

Police Recommendations

Before making recommendations, it is important to be clear that an EMRO only puts in place a time for the last sale of alcohol in a defined locality. A club can remain open beyond the EMRO time and it is likely that clubs / bars would remain open for a period of 'drinking-up' time beyond the EMRO time if the EMRO were agreed. This factor needs to be considered in any recommendation made.

The Police are also very mindful of the economic contribution that the NTE makes to the City. Benefits of this economy are felt not only by Licensees but also other trades that exist to support NTE activity (hotels, taxis, restaurants etc). We do not intend to put

forward a recommendation which we feel would be disproportionate in this regard. Part of our on-going dialogue and consultation with the local licensing trade has been aimed at understanding this dynamic and giving licensees the opportunity to raise concerns about such matters (if they exist) with the Police before formal consultation commences.

The evidence presented earlier in this paper clearly demonstrated an increase in disorder after 3am since the introduction of late night opening in August 2009. We believe that this increase in post 3am disorder can be reduced through the appropriate and proportionate use of an EMRO. It is also the Police's belief that the crime and disorder reduction since voluntary closures at 4am were introduced, provides an evidence base to show the impact that earlier closure can bring.

The Police further believe that the nature of the Norwich NTE makes it appropriate that the time of last sales recommended should not be the same for each day of the week. As mentioned above, we are very mindful of the economic impact of any changes and this will be particularly relevant on Friday and Saturday nights (i.e. into the earlier hours of Saturday / Sunday morning) when the NTE attracts the highest number of visitors. Setting an EMRO at an earlier time on these evenings would have a greater economic impact than on midweek nights when trade is less. We also believe that an earlier EMRO time during weeknights (Sun-Thursday) provides a relief to local residents from the constant problems associated with late night drinking. The analysis detailed above highlights the link between late night disorder beyond 3am and later licences. We believe that an EMRO set at 3am on Monday, Tuesday, Wednesday, Thursday and Friday mornings would reduce crime and disorder in the NTE. Such an EMRO is justified based upon the crime and disorder profile evidenced in this report, and reflects the lower number of visitors to the Norwich NTE during midweek evenings.

At Weekend nights, the Police believe a later EMRO should be set. This is based upon our concerns of economic impact (as referred to above) but to also ensure that the dispersal of persons from pubs and clubs occurs slowly and not simultaneously due to early closure.

One of the intentions of the 2003 Licensing Act was to reduce the bottlenecks which occurred on peak nights (Friday & Saturday) at 2am when clubs all closed at the same time with disorder often resulting. The Police believe that the 2003 Act was successful in achieving this aim and believe that setting an EMRO earlier than 3am on weekends might be counterproductive. There are clear advantages to a staggered closing time on peak nights as it assists dispersal and spreads the demand on other services, in particular taxis. Staggered closing time would occur naturally if the EMRO is set at the right time. Such problems are very unlikely to occur on midweek nights as the pubs and clubs have a smaller market with less people drinking late at night.

On Friday and Saturday nights the NTE can accommodate over 12,000 persons. Many of these crowds do leave way before 3am but a considerable number of people would all be simultaneously leaving the bars and clubs if an EMRO was put in place at 3am. The Police are concerned that a 3am EMRO on Friday and Saturday nights (effectively Saturday and Sunday mornings) would increase disorder as large crowds leave the bars simultaneously. The Police regularly observe (see Inspector statements in appendix 3)

that a high percentage of the conflict in the NTE occurs when crowds come into conflict whilst waiting for services (taxis, food, club entry etc) and we are mindful of the careful balance which needs to be applied whilst setting a last time for alcohol sales. We are therefore recommending a later EMRO on Friday and Saturday nights (effectively Saturday and Sunday Mornings) to allow a more gradual dispersal.

The current latest time of opening in the main disorder hotspots is 4am as a result of the voluntary closure. The Police are very aware that premises could at any time apply for a licence variation which goes beyond 4am and that this might lead to others doing the same. Given that the voluntary agreement has been so successful, we believe that the EMRO at weekends should be a time that ensures the reductions in crime are maintained. It is therefore recommended that the EMRO on Friday and Saturday nights is set at 03:45hr. This will in all likelihood result in the bars and clubs continuing to close at 4am (the 15 minutes being drinking up time as 03:45hr will represent the last time for alcohol sales) as they currently do. This recommendation has been carefully considered to ensure that it is both justified in terms of the crime and disorder profile but also to ensure that it is not disproportionate in terms of economic impact.

The Police recommend that the above times are applied to each of the three zones listed above, due to the clear level of disorder which occurs in each. It is proposed that three separate EMROs should exist for each area thus making the process much simpler if any of the EMROs needed to be reviewed at a future date (it is much simpler to amend one smaller EMRO than it is a large one). Each of the three areas also has their own dynamic and whilst the current disorder profile currently justifies the recommended EMRO in the three zones, it is important that the ability is present to simply amend these arrangements at the point that the EMRO is reviewed.

The Police believe that the evidence presented both in this report and the accompanying appendices provides the necessary evidence base for this recommendation.

Summary of Police Recommendations:

- Three EMROS are established in the City with one in each of the three zones listed below.
- The last time for sale of alcohol is set at 03:00hr on the following days in each of the three zones:
 - Monday
 - Tuesday
 - Wednesday
 - Thursday
 - Friday
- The last time for sale of alcohol is set at 03:45hr on the following days in each of the three zones:
 - Saturday
 - Sunday
- Zones are set as follows:
 - ZONE 1 – The area marked Zone 1 on Appendix 9 covering all premises with a postal address together with the highway and any external area within any part of London Street / Bank Plain / Queen Street/ Upper King Street / Tombland which falls in the area marked as Zone 1.

- ZONE 2 - The area marked Zone 2 on Appendix 9 covering all premises with a postal address together with the highway and any external area within any part of Prince Of Wales Road / Rose Lane / St Vedas Street which falls in the area marked as Zone 2
- ZONE 3 - The area marked Zone 3 on Appendix 9 covering all premises with a postal address together with the highway and any external area within any part of Riverside Development² (including all premises facing onto the pedestrian walk way that commences on the junction of Kobenz Avenue and leads through the entertainment complex onto Wherry Road) / Koblenz Avenue / Wherry Road which falls in the area marked as Zone 3.
- The above zones are detailed in a map in appendix 9. It is recommended that for the purposes of the three EMROs that this map is used to define the three areas.

In making the above recommendations the Police are mindful that the proposals could have an economic impact. However, our evidence (CCTV analysis of persons on the street at the time, dialogue with clubs, evidence of footfall at relevant times) suggests only a limited market would be affected and that our recommendations are late enough to allow the NTE to continue to thrive. However, as a means of supporting the NTE, we are not recommending at this stage that an application is made for a Late Night Levy. We believe that the negative costs of the NTE will reduce significantly if the above EMRO is applied. We therefore will not be recommending that a Levy is applied to ensure that our application of all the new powers when taken as a whole is proportionate. We would however note at this stage that the Police would consider recommending a levy at a later date should alcohol related crime and disorder increase in the City at any later time. We hope that we would be able to work with licensed premises to prevent such rises in disorder from occurring.

The Police are aware of a small number of premises outside the three zones listed with late hours of opening. The Police believe that an EMRO is not proportionate at these locations based upon current levels of crime and disorder. However, this position should be subject to review and application for further EMROs will be considered in the future if the crime and disorder profile changes. It is further recommended that the Council build in a review period into any EMRO application allowing sufficient time for the impact of the policy to be assessed.

The Police believe that these recommendations will promote the following licensing objectives:

- a) the prevention of crime and disorder;
- b) public safety;
- c) the prevention of public nuisance

² Note that the nightclub on the Riverside Development has only recently re-opened meaning that the incidents highlighted have only occurred in recent weeks. A clear hotspot would show if the incidents that have occurred continued at the same frequency for a seven month period.

Appendix 1-Comments from residents opposed to planning application 12/01348/F (Change of use of ground floor of building from offices (Class B1a) to shop (Class A1), office (Class A2), food and drink (Class A3) and drinking establishment (Class A4). / 102 Prince Of Wales Road Norwich NR1 1NY

Comment submitted Mon 17 Sep 2012

Comment submitted Wed 12 Sep 2012

I wish to support and add to residents' comments on the above planning application. Residents are unanimously opposed to extending the late night activities, based on their unpleasant experiences, some of which they are too polite to describe. Living in the City Centre carries an expectation of noise, and residents expect this - However almost every-one of the residents who have spoken to me have much worse to report than mere noise, and I was concerned enough to spend 2 nights watching, one with residents in Cathedral Street and Stuart Gardens, one with police. Even on a wet night I saw many people urinating in gardens, alleyways and doorways, and vomiting on pavements and passages in Prince of Wales Road and surrounding residential streets. Smell could not be ignored, and is detrimental to the character of the area and the wellbeing of residents and visitors alike. Police had to intervene to prevent fights on several occasions, and were stretched to be able to see each other, and the public over the length of the area, which would be extended if this application were accepted. Many people have told me they do not go out at night because of harassment, gateways blocked by groups of people who sometimes laugh and/or refuse to move when asked. Some who work shifts dread their journey home at weekends. Others have talked about dodging pools of vomit when they go out on Sunday morning, and about their gardens being used as toilets by both men and women, with excrement and condoms, frequently and needles occasionally left behind as evidence. In one case a resident described finding their door and door-handles smeared with excrement. If it is unpleasant to find these the next day, the committee can no doubt imagine possible scenes of how these might appear, and what residents might face, should they wish to exercise their human right free movement, eg to go out at night. Early closing helps the police, and some residents consider it an improvement, however others say it just gets people out on the streets sooner. All agree that it is numbers of people and dispersion of police that makes the difference. Some would add that the lack of toilets is a factor, and would ask that clubs provide toilets for people club-hopping as well as those on their premises. Some noted that when people are required to leave clubs, for example because they are acting aggressively, they leave by back doors, not onto heavily policed Prince of Wales Road, but the barely policed side streets near their homes. This specific application would potentially increase the numbers of people on the residential streets going to and from clubs, including the small proportion who behave appallingly. Stretch the area that the police need to keep under intensive observation on Prince of Wales Road itself. Bring the zone closer to the retirement homes in Recorder Road. Overlook/exit directly in front of Stuart Gardens residents. It is inappropriate and I urge you to reject it.

(Objects)

Comment submitted Wed 12 Sep 2012

On behalf of Alan Boswell Insurance Brokers Ltd, 100 Prince of Wales Road.

(Objects)

Comment submitted Tue 11 Sep 2012

I have a flat in Stuart Gardens which backs onto 102 Prince of Wales Rd and am very concerned that this application, if allowed, will create even more distress for the long suffering residents of Stuart Gardens and surrounding streets. At present the residents are bombarded every weekend with drunken abuse, noise, anti-social behavior until 4am at least from Mercy night club and the rest on Prince of Wales Rd. In spite of constant complaints to the council and police, nothing has changed and the granting of yet one more late night drinking license would be sheer madness. There are at present 21 drinking/night clubs and 17 fast food outlets and off-licenses between King St and the river. One more would be madness and totally unnecessary. These night clubs with the attendant loutish behavior are already having a negative effect on the value of residential properties. Please consider the residents and do not allow this application.

(Objects)

Comment submitted Mon 10 Sep 2012

(Objects)

Comment submitted Thu 06 Sep 2012

We have now lived in Lovelstaithe for 12 years and objected to both Mercy and Tesco's obtaining a liquor licence. Since moving here we are now virtually the only ungated development in Recorder Road which allows the Prince of Wales Road drunks to use our development as a local lavatory. We have given up complaining as it gets us absolutely nowhere other than becoming even more frustrated. We totally object to yet another licenced premises being allowed so near to residential properties. Does Norwich City Licensing Committee have such little regard for the local residents of POW Road? I think the answer must be yes.

(Objects)

Comment submitted Thu 06 Sep 2012

(Objects)

Comment submitted Thu 06 Sep 2012

(Objects)

Comment submitted Thu 06 Sep 2012

(Objects)

Comment submitted Fri 31 Aug 2012

We only recently moved to Stuart Gardens from Essex, and were completely unaware that what looked like a quiet, pleasant residential block of flats turned into a living nightmare at night. It is almost impossible to describe the volume of noise coming out of the MERCY nightclub - a steady and non-stop deafening thumping bass that penetrates our flat so that it is impossible to get away from it. Some nights it goes on till after 4.00 a.m. On top of this we have to deal with the yelling and raucous behaviour of drunken clubbers throughout the night, who stagger out to vomit, urinate against someone's front door, and yell. I have witnessed this behaviour when looking out of the window at 2.30 a.m. to see who is making the noise. The next morning there is disgusting debris everywhere, including broken glass, pools of vomit and empty cans. I notice that sometimes a street cleaning vehicle appears early to clean up, but what cost to the taxpayer for this? And what cost to residents' health and well-being when they are unable to get regular decent sleep? Please do not inflict yet another drinking establishment on or near the Prince of Wales Rd. No resident should have to put up with the public nuisance and noise pollution created by these places. We were attracted to Norwich because of its reputation for being a green city, for its art and culture, and for its consideration towards its residents. Please do something significant to improve the quality of life for people in Stuart Gardens and other homes near Prince of Wales Road by not granting further licences for drinking establishments, and by controlling the serious anti-social problems and noise pollution that already exist.

(Objects)

Comment submitted Mon 27 Aug 2012

As a resident on one of the roads leading onto Prince of Wales road, I think it is a very bad idea to open yet another nightclub. The noise disturbance of the existing clubs themselves and more of the drunken people coming out of them is enough. The police have their hands full with the part down the road and this club would be located just outside the main zone which would mean making the clubbing area even bigger.

(Objects)***Comment submitted Sat 25 Aug 2012***

I think that this is a dreadful idea. There are plenty of bars and night clubs on Prince of Wales road. I live on one of the streets coming off Prince of Wales Road and unfortunately cannot afford to move. the noise and the disturbance that comes from Prince of Wales road is dreadful! I do not think that a new bar is needed to contribute. Our normal weekends consist of things posted through our door - including poo, constant fighting, shouting, people being sick outside our door, weeing up our wall, takeaways thrown on our windows and we have even had a smashed window from a drunk person who fell through it! Another reason is surely the cost to the tax payer for more police. The police have been incredible when we have had to deal with then re: the effects of the drunks on Prince of Wales but i do feel that they are wasted acting as doormen to control the effects of drinking on the prince of Wales road. I have owned bars myself and understand the business side but it is not in the correct area as there is a residential behind it!! Also I often walk into town on a Saturday or Sunday and have to walk over litter and sick outside bars that havent cleaned up!

(Objects)***Comment submitted Mon 20 Aug 2012***

No. No. No. I strongly object to this planning application. Prince of Wales Road does not need another bar or nightclub - it already has too many. The street and it's surrounding residential area already have huge problems with anti-social behaviour and the noise from night time economy businesses and drunks. Another drinking establishment will not help, it will just create more noise and more drunks. I live in Stuart Gardens which is directly behind this building. I already have to put up with the "clubbers" and "drinkers" of Prince of Wales Road using my garden and the car park of my home as a convenient place to vomit, urinate and defecate (yes, I have seen a drunk take a poo in the my front garden - not a sight you quickly forget). It is a handy place for these drunken, noisy and often argumentative strangers to sit around drinking cheap wine and strong cider, or take drugs (hiding behind the cars in the car park). I particularly dislike being woken in the night by people having loud, drunken sex underneath my bedroom window. I shouldn't have to see/hear or deal with this. These factors directly impact the value of my property and the quality of my life, and the lives of my fellow residents - many of whom are elderly, or couples with young children. The council seem to be willfully ignorant of the problems they have created by granting drinks licenses to every property on Prince of Wales Road and the police seem to be woefully inadequate at dealing with the fallout. Please have a thought for the residents of the area surrounding Prince of Wales Road who don't need any more night-time noise or drunken disturbances.

(Objects)***Comment submitted Sat 18 Aug 2012***

We live in Stuart Gardens behind this building. We already have major trouble and harassment from the revellers using all the other bars and clubs on Prince of Wales Road over the weekend. We get a constant stream of drunks using where we live as a toilet, meeting area for illicit drinking (many we suspect under-age), shouting, fighting, vomiting and for sex. We have reported it to the council and police many times to no effect. So the idea of yet another club/bar right next to us is not a good situation. We already have to deal with the bass rumble from the other clubs close by. It really is time that people realised this is a residential area and that the residents also deserve to be looked after and protected from/during the night time economy. Currently we get next to no support and I am tired of having to call the police most weekends. This road does not require another drinking establishment and it shows a terrible lack of imagination. We should be looking at regenerating this area back to a day time economy so the businesses that have left due to the appalling circumstances currently, can come back and improve the area for all. Please can we the residents (many of whom are elderly and afraid to go out) have some consideration?

(Objects)***Comment submitted Mon 27 Aug 2012***

We are residents of Stuart Gardens and already have our lives unacceptably disturbed by the noise coming from the Mercy club in Prince of Wales Road well into the early hours of the morning, followed by the shouting coming from those leaving - not to mention the trail of broken glass, litter and vomit in St Faith's Lane the following day.

The last thing the area needs is another "drinking establishment" and we very strongly oppose the application. The Council should not be prepared to see Prince of Wales Road turn into an unbroken chain of bars, clubs and fast food joints - apart from it being the main introduction to the city for those coming from the train, it backs onto an intensively occupied residential zone whose occupants deserve much greater consideration than was shown when the current level of development in Prince of Wales Road was approved.

(Objects)

Comment submitted Fri 31 Aug 2012

Comment submitted Sat 25 Aug 2012

I reside at Stuart Gardens just behind this building and DON'T SUPPORT this proposal for this new bar/club on Prince Of Wales Road, particularly one in such close proximity to my home. We are already have been facing very high noise pollution,anti social behavior, highly intoxicated people all round our RESIDENTIAL premises; especially Friday, Saturday & Sunday we see intoxicated boys-girls using Stuart Garden premises: (where we live) as a toilet, illicit drinking, shouting, fighting, vomiting. Please help avoid this nuisance by not permitting this new bar application please... Its very frightening to go out of house during late night if you can imagine all this. I would like to request you to please help us by not permitting this bar Application:12/01348/F ;102 Prince Of Wales Road Norwich NR1 1NY and as a resident close to this Location I personally strongly oppose this proposal.

(Objects)

Comment submitted Sat 18 Aug 2012

I live at Stuart Gardens just behind this building and would definitely object to there being yet another bar/club on Prince Of Wales Road, particularly one in such close proximity to my home. The residents here already have to cope with a constant stream of drunken clubbers shouting, urinating and vomiting outside of our homes. Also the volume of music from the existing clubs is completely intrusive; for example, the thudding bass is audible in my living room over the sounds of my television. I have already complained verbally to the owner of Mercy about this and will shortly be doing so again in writing. The prospect of another club adding to all of these problems is something I would object to in the strongest terms. I am actually currently trying to sell my flat but am even finding the nearby clubs an obstacle to this. The majority of people viewing my flat in the last six months have had the same comment - it's a nice place but the proximity to the bars and clubs of Prince Of Wales Road is very off-putting. This has a direct impact on the values of our flats, as reducing the price is the only way to mitigate the location becoming less desirable. So not only are the bars and clubs making Stuart Gardens an unpleasant place to live, they are also making it a difficult place to move away from. The residents of Stuart Gardens, some of whom are elderly or have young families, deserve to have a decent place to live; and they also deserve to have confidence that the value of their property is not being constantly eroded by the encroaching night-life.

Appendix 2: Letter from the Chief Executive of Norwich City Council and the Chief Constable of Norfolk Police to Norwich Licensees.

Changes to the Licensing Act 2003 – how will these affect your business?

Dear Licensee

As the Chief Constable of Norfolk Police and the Chief Executive of Norwich City Council, we have a responsibility for making sure that the night time economy of Norwich is thriving and safe.

The city has a good reputation as a top destination and one of the most popular night time economies in the region. The forthcoming changes in the licensing law give us an opportunity to work with you to improve our approach so that visitors to the city can continue to have an enjoyable night out with minimum disruption for our residents and maximum safety for themselves.

These changes will affect you and your business and we want to be sure that you understand the implications of them.

Previously, licensing legislation changed radically in November 2005 when de-regulation moved the responsibility for licensing from the Magistrates Court system to the local authorities and introduced a relaxation of the licensing hours.

However, these changes have led to good and bad consequences for alcohol related crime and disorder:

- The bottlenecks to enter licensed premises previously seen between 10.30 and 11pm have eased and this is good news as it was the peak time for assaults and disorder with flashpoints in and around the queues.
- The changes also resulted in a few venues choosing to amend their premises license thereby staying open later into the morning. The bad news from this change is the increase in calls for Police support as the residue from the night's activities now continues beyond 6am on Saturdays and Sundays.

Although there are only in the region of 200 customers leaving these premises after 6 am this means that there is no longer a gap between the end of the night time economy entertainment and the beginning of the daytime economy the following day.

The legislation now proposed will re-balance the provisions of the Licensing Act as it has been acknowledged that the four licensing objectives place considerable demands on the resources of the Police and partner agencies to manage the night-time economy beyond 3 am.

Without the current dedicated service after 3 am, there would be a serious deterioration in the quality of life for the citizens of Norwich including an escalation of the number of victims of alcohol related assaults, potentially more serious injuries, and even fatalities. As lead agencies in Norfolk Community Safety Partnership we will make sure that we do not

return to the former situation in the city where this type of crime and disorder was more frequent and widespread.

The proposed changes in the Licensing Act will allow the licensing authority to:

- 1 Apply a Late Night Levy to those premises that benefit from trading alcohol in a safe late-night economy to offset the extra costs generated for the Police and local authority and;
- 2 Restrict the sale of alcohol in the whole or part of their area for any specified period between midnight and 6 am. This applies to premises licences, club premises certificates and temporary event notices. This legislation is likely to come into force later this year.

In advance of this legislation being introduced we have undertaken analysis of the crime data and this clearly shows that alcohol related crime significantly increases after 3am on Saturday and Sunday mornings and this is perpetrated by a small number of late night revellers.

The impact of this crime in relation to the victims, cost to society and the provision of the dedicated policing is the evidence that we will use to justify the use of both a late night levy and early morning restriction orders.

In preparation for the forthcoming change in the management of the night-time economy area we would like you to consider your position in this.

We believe that by working together the application of the late night levy and the early morning restriction orders can be focussed on supporting the dedicated policing necessary and controlling the area where the main entertainment zone is based.

We would like you to consider voluntarily reducing your operating hours which would effectively regulate the Norwich night-time economy, provide a marked gap between daytime and night time activity and allow the Police and local authority services to concentrate their efforts to improve and maintain a more manageable environment. **I confirm that the licensing authority will make this change to your premises license free of charge.**

Finally, there have been discussions about how and where the main entertainment zone should fit into the whole of the city environment with a growing consensus that Prince of Wales Road should be retained as the late night zone with the areas immediately surrounding this road having an earlier economy.

Therefore, as a general principle, the further a licensed premise is from the main entertainment zone, the earlier the termination time for the sale of alcohol specified on the premises license should be. Overall this may mean three zones within the city boundary each with a different termination time for the sale of alcohol.

Chief Inspector Gavin Tempest has led on Norfolk 'Nightsafe' initiative for some years now and we asked Gavin to make contact with premises license holders' starting with those opening the latest first to elaborate on our position and intentions and thereby starting a

dialogue so that you have the opportunity to be part of the solution. Some good progress has already been made with operators on Prince of Wales Road voluntarily changing their Licences so that the latest sale of alcohol will be 4am.

Our hope is that we can expand on the work already undertaken and build on the current achievements with you to overcome the problems highlighted in this letter and maintain a vibrant night-time economy which is thriving and safe.

Formal consultation will take place later in the year however, if you would like to find out more on the above proposal in the meantime please Gavin on 01603 276098.

Many thanks for your help and co-operation.

Phil Gormley
Chief Constable Norfolk Constabulary

Laura McGillivray
Chief Executive Norwich City Council

WITNESS STATEMENT

(CJ Act 1967, s.9; MC Act 1980, ss.5A(3) (a) and 5B; MC Rules 1981, r.70)

URN: 36 / /

Statement of: Keith Philpot

Age if under 18: Over 18 (if over 18 insert 'over 18') Occupation: Inspector 3329

This statement (consisting of 5 page(s) each signed by me) is true to the best of my knowledge and belief and I make it knowing that, if it is tendered in evidence, I shall be liable to prosecution if I have wilfully stated anything in it, which I know to be false, or do not believe to be true.

Signature: Date 07/02/2013

Tick if witness evidence is visually recorded ☐ (supply witness details on rear)

During the period of Friday 1st February to Sunday 3rd February 2013, I was the duty public order commander for the Norwich Night Time Economy (NTE). This role requires me to:

- 1) Maintain safety for customers and other people using the evening or night-time economy;
- 2) Reduce alcohol-related crime and disorder in and around licensed premises;
- 3) Improve public confidence in respect of alcohol related issues; and,
- 4) Improve the quality of life for people otherwise affected by the business of licensed premises.

In order to fulfil these aims, our policing strategy is one of high profile policing with officers on foot, in high visibility jackets being placed around key areas of the NTE. My specific style is to reinforce these aims through strong and visible leadership to my staff and licensed premises. I am therefore continually present through the NTE assessing and reorganising my staff around events or the dynamics I am observing.

This statement documents my assessment of these dynamics over the weekend of Friday 1st February to Sunday 3rd February 2013.

Having delivered my briefing, deployment requirements and directions to the 27 police officers under my command on each night of this weekend, I undertake my first walk through of the entire NTE at around 23:00 hours. On this walkthrough I meet door staff and Designated

Signature: Signature witnessed by:



Continuation Statement Of Page of

Premises Supervisor (DPS) of each establishment to discuss the evening's events, likely numbers and any information or concerns that may require policing support. This walk through also means that I start to gather a feeling of the groups visiting or socialising within the NTE as well as individuals who may be known to me or my officers through policing intelligence.

Over both nights, the general atmosphere during the period between 23:00 and 01:00 is generally quite relaxed. Levels of visible intoxication are low, and whilst there are specific low level issues of anti social behaviour these are generally confined to specific individuals that can be quite easily managed by my officers in their respective locations. Typical examples include people urinating in doorways, or acting in a rowdy manner usually emanating in some verbal abuse being shouted at high level. Typical sanctions imposed by the police include use of fixed penalty notices or the issue of Section 27 (direction to leave) notices under the Violent Crime Act.

Over the course of this weekend my officers issue 8 Section 27 notices and 3 Fixed Penalty Notices for such situations within this time period. Four of the 17 arrests are made during this period.

From 1am, there is a gradual build in the numbers of people walking around. The street atmosphere and perception is of greater numbers as the influence of outside smoking areas tends to merge those that are loitering on the pathways with those within the smoking areas of licensed premises. Indeed on Friday 1st February 2013, it was evident that around this time of night, there were a greater number of people within the smoking areas of bars than physically inside the premises. This creates two problems for the policing operation. Firstly the smoking areas become cluster points whereby people within the smoking areas engage with those that are passing. This leads to conversations between people admitted onto licensed premises and those that are not. This can perpetuate inappropriate exchanges between the two groups as well exchanges of alcohol and cigarettes between groups which need police and door staff intervention. Secondly the positioning of smoking areas to the front of premises, many with permissions that allow drinking, create an ideal viewing platform to observe and comment upon situations that arise on the street.

For example, at 01:15 hours on Saturday 2nd February 2013, I arrested a male who was within a smoking area. This male had observed his sister be refused entry into the premises. He took exception to this and the police intervention needed to assist the door staff with her. He therefore came out the premises and fought with officers. As this incident took place

Signature: Signature witnessed by:

Continuation Statement Of: Page of

immediately in front of the smoking area, the male used the opportunity to incite the group drawing more police officers to the incident and creating a disproportionate perception of the level of violence being dealt with by police officers. Immediately after this event I was aware of mobile phone footage being shown around by those within the smoking areas and it is common place to see such footage on social media websites or similar as an indication of the NTE within Norwich.

It therefore appears that smoking areas are seldom used by those needing to smoke and have become the hub of some premises where the opportunity to view events on the street, such as these, are a greater draw than the entertainment being offered inside.

By 2am the levels of intoxication are evident. A general scan of the street scene can readily identify those who are drunk or who are ill due to their intake of alcohol. Individuals can be seen staggering in almost ignorance to any other passers by, others can be seen in semi conscious states sitting or lying on the floor or on window ledges, usually with a pile of vomit in close proximity. These demand careful assessment by me and my officers and over the weekend concerned required the attendance of one ambulance. Two further individuals require the assistance of the Norwich SOS scheme to make some medical intervention to ensure the safety of those intoxicated. However, I count over a dozen interactions over the two nights whereby officers make a casual check on the welfare of a person heavily intoxicated but deemed them to be safe and not in need of medical assistance.

As time gathers closer to 3am there is a gradual drift towards the late night refreshment houses. These establishments start to become the cluster areas where people having purchased food, consume them in groups inside and out. Bins quickly become overflowed leading to discarded pizza boxes and fast food containers being dropped onto the pavement. Over the weekend observed an intoxicated female, enters a late night refreshment house and racially abuses the staff who she believes has taken away employment for the 'British'. This female is arrested within the premises and escorted to police detention facilities whilst police officers and staff at the premises mix their competing demands of their respective services with a need to document and record the evidence of this incident.

As time draws closer to 4am, the individuals on the street are joined by larger groups who are also making their way to the late night refreshment houses for food. Queues are evident for taxis and the road scene is more frantic with increased number of vehicles travelling around the NTE. Drivers need to be vigilant for drunken persons swaying close to the road or those

Signature: Signature witnessed by:

Continuation Statement Of: Page of

belligerent to road users when crossing the road in front of them, causing sudden braking. This is widely observed and over the weekend described police officers make an intervention with a male who is kicking a pizza box like a football in the middle of Prince of Wales Road. The noise level on the street has also increased as shouting, cheering and loud exchanges can be heard amongst the groups around. Over the weekend described, 5 out of the 17 arrests are made after 3:30am. These are more serious offences of assault or affray whereby persons on the street have quickly formed a dispute, often due to the influence of alcohol, and started to fight. Whilst officers intervene quickly low level injuries such as bruising or bloodied faces are evident. A further 5 Section 27 Notices are issued during this timeframe as officers use this direction to leave to reinforce the need for people to go home due to their behaviour.

By 4:30 am the volume of people within the NTE has started to reduce. Gathering points are mainly around the taxi companies and numbers are less within the late night refreshments houses. Police interactions are contained to those who are drunk and disorderly and over the course of the weekend two of the 17 arrests are made between 4 and 4:30 am as a result of drunk and disorderly behaviour. There is an abundance of litter mainly around the taxi queues or directly outside the late night refreshment houses. The clearing path areas also highlight areas where people have vomited and my walk through of Prince of Wales Road at 4:30am on Sunday 3rd February counts 9 separate areas of vomit within a 100 metres.

By 5 am the volume of people has cleared significantly and I have begun to stand down officers so that they can start the process of preparing the packages required by investigators in the morning for the people they have arrested.

I undertake a final walk through of the NTE at 5:30 am where on Sunday 3rd February I meet the street cleaning teams of the council who are beginning to empty the bins and clean up the streets before sunrise. I also come across a male in his fifties who I discover has got up early and cycled to Prince of Wales Road, where I find him collecting cigarette butts from the pavement outside the smoking areas. He explains to me how this once a week exercise negates the need for him to buy any tobacco and shows me the plastic bag containing a quantity of tobacco that he has gleaned from this foresting exercise.

Upon my return to the police station, I liaise with my sergeants to manage the handover of tasks for the morning crews. Norwich based police officers finalise their paperwork and then redeploy to calls for service from the public whilst those from further afield travel back to their

Signature: Signature witnessed by:

Continuation Statement Of: Page of

base station. Over the weekend, I have complemented Norwich based officers with those from Diss, Aylsham, Cromer, North Walsham, Thetford, Dereham and Wymondham.

As I finish my shift, I am mindful of the safety of those who have travelled distances back to their station, after hours of patrol in the cold and damp. I am conscious of the officers who have been hurt during violent arrests and those like me who will need to explain to their families why their uniform needs washing due to muddied legs, arms and knees through the consequences of restraining people on a wet and muddy path.

The culmination of the weekends activities have resulted in the following:

- 1) 17 arrests
 - i) 6 for Drunk and disorderly
 - ii) 2 for Affray (fighting)
 - iii) 4 Assault
 - iv) 2 for public disorder
 - v) 1 for Possession of weapons
 - vi) 1 for breach of section 27 notice
 - vii) 1 for breach of community order
- 2) 3 Fixed Penalty Notices (2 for urinating, 1 for public order offences)
- 3) 15 Section 27 notices
- 4) Intervention on a poorly managed licensed premise.
- 5) The disruption of persons on bail conditions with a history of violence within the NTE.
- 6) Three officers being assaulted

Signature: Signature witnessed by:

Witness contact details

Home address: Postcode:
Home telephone No: Work telephone No:
Mobile/Pager No: E-mail address:
Preferred means of contact:
Male ☐ Female ☐ Date and place of birth:
Former name: Height: Ethnicity Code: 1 - White European
Dates of witness non-availability:

Witness care

- a) Is the witness willing and likely to attend court? Yes ☐ No ☐. If 'No', include reason(s) on form MG6. What can be done to ensure attendance?
b) Does the witness require 'special measures' as a vulnerable or intimidated witness? Yes ☐ No ☐. If 'Yes' submit MG2 with file.
c) Does the witness have any specific care needs? Yes ☐ No ☐. If 'Yes' what are they? (Healthcare, childcare, transport, disability, language difficulties, visually impaired, restricted mobility or other concerns?)

IF CHILD WITNESS:

PARENT / GUARDIAN name:
Address (if different to the address of the child) Tel:
Dates of PARENT / GUARDIAN non-availability:
Does the witness's PARENT / GUARDIAN have any specific care needs? Yes ☐ No ☐. If 'Yes' what are they? (Healthcare, childcare, transport, disability, language difficulties, visually impaired, restricted mobility or other concerns?)

Witness Consent (for witness completion)

- a) The criminal justice process and Victim Personal Statement scheme (victims only) has been explained to me: Yes ☐ No ☐
b) I have been given the leaflet 'Giving a witness statement to the police - what happens next?' Yes ☐ No ☐
c) I consent to police having access to my medical record(s) in relation to this matter: Yes ☐ No ☐ N/A ☐
d) I consent to my medical record in relation to this matter being disclosed to the defence: Yes ☐ No ☐ N/A ☐
e) I consent to the statement being disclosed for the purposes of civil proceedings e.g. child care proceedings (if applicable): Yes ☐ No ☐ N/A ☐
f) The information recorded above will be disclosed to the Witness Service so that they can offer help and support, unless you ask them not to. Tick this box to decline their services: ☐

Signature of witness: Statement taken by:

Station: Time and place statement taken:



WITNESS STATEMENT

Criminal Procedure Rules, r 27. 2; Criminal Justice Act 1967, s. 9; Magistrates' Courts Act 1980, s.5B

URN: **36** / /

Statement of: Roger Clarke

Age if under 18: Over 18 (if over 18 insert 'over 18') Occupation: Inspector 4150

This statement (consisting of 1 page(s) each signed by me) is true to the best of my knowledge and belief and I make it knowing that, if it is tendered in evidence, I shall be liable to prosecution if I have wilfully stated anything in it, which I know to be false, or do not believe to be true.

Signature:Date

Tick if witness evidence is visually recorded ☐ (supply witness details on rear)

On Friday 15th February and Saturday 16th February 2013 I was the Inspector in charge of Public Order of the Night Time Economy in Norwich. This statement will outline my experiences of the weekend and specifically the time after 0300hrs on both dates.

Friday 15th February was quiet in terms of arrests and section 27 notices; with just two arrests for possession of drugs and no section 27 notices. At 0300hrs the majority of my policing resources are in Prince of Wales Road. On both nights I deployed four vans with a Sergeant and four Constables in addition to a further three double crewed prisoner vans. Although there were few arrests there were still many people walking around the bottom end of Prince of Wales Road near to Qube and Masterchef who were clearly very intoxicated; they were staggering from one side of the pavement to the other; several times in the evening my officers have to ask if people are feeling unwell due to alcohol. As people are eating their takeaway the bins are by now full and people are dropping their takeaway food and wrappings onto the floor. There appears to be a lack of taxis as people are both queuing outside the taxi firms and trying to hail a black cab. There is still significant noise in the general area; music from the clubs; cars driving down the road and people just being drunk and shouting. It is not a place that is conducive to families trying to live and sleep. At about 0430hrs most of the people have by now left the area; but there are still a couple of hundred in the locality; and this was on a very quiet night for the Public Order patrols.

Signature: Signature witnessed by:



Continuation Statement Of: Page of

On Saturday 16th February I again deployed the significant resources of four vans plus three prisoner vans. Public Order policing is a large deployment for Norfolk Constabulary; I have officers on patrol tonight from all round the county. To put into context the size of the deployment; I have more on patrol in a few streets of Norwich than I had to police the towns of Stalham and North Walsham for a 24/7 response. The whole night is much busier; Prince of Wales Road; Bank Plain; Queens Street and London Street are busy with people starting to leave the night clubs. Outside Kartel in London Street I observe large numbers of people who are obviously intoxicated and shouting loudly. By 0300hrs because of sheer numbers most of my resources are at the bottom end of Prince of Wales Road. It is even louder tonight with the volume of people in the area, it would be impossible to hear my airwave radio without an earpiece. The only other time I have had to wear my earpiece was at the football and at various raves I have attended. Outside the takeaway shops people are milling about intoxicated and dropping their food and wrappings. The amount of dropped litter is large; the bins are again full the area around Olive Tree and China Inn has containers and food all around. Taxis are again an issue tonight; it is obvious there are not enough taxis to take people out of the area. I have real concerns for many of the intoxicated people; both the ones who are in large groups and shouting loudly and the ones who are by themselves and obviously finding it difficult to walk to their destination. On a couple of occasions I saw officers escort drunk members of the public out of the road who clearly had no idea they were causing a problem on the road; on one occasion I saw a car brake sharply as a result of someone running into the road

Throughout the evening my officers have been issuing section 27 notices; on this evening alone we have issued nine and we have also arrested twelve people for offences ranging from assault; drunk and disorderly and possession of controlled drugs.

It is a sad reflection of policing Norwich on a Friday/Saturday night that it requires the level of police resources that it attracts. Because of the level of hostility and potential for disturbance I have to make sure that at the briefing I give at the beginning of the night I cover such issues as officer safety. I ensure that officers have their personal protection equipment; that they are wearing their fluorescent jackets so we can see each other and I require that the officers patrol in pairs.

Since the change in the smoking ban I have noticed many premises in Norwich now have a smoking area outside their area that is merely roped off from the main street. This allows patrons from the premises to be talking to members of the public on the street; this causes a

Signature: Signature witnessed by:

Continuation Statement Of: Page of

congestion of the pavement and sometimes resentment from people still waiting to enter the premises or who have been refused entry into the premises.

I have the same view about the level of noise and disorder as last night; it is not a place that a family would want to be out and about and it is not a place that families would want to live near.

At approximately 0500hrs I stand down the Public Order units so they can begin the process of making statements about their arrests. The Prince Of Wales Road is a total mess with litter everywhere and workers start to clean the streets.

Signature: Signature witnessed by:

Witness contact details

Home address: Postcode:
Home telephone No: Work telephone No:
Mobile/Pager No: E-mail address:
Preferred means of contact:
Male ☐ Female ☐ Date and place of birth:
Former name: Height: Ethnicity Code: 1 - White European
Dates of witness non-availability:

Witness care

- a) Is the witness willing and likely to attend court? Yes ☐ No ☐. If 'No', include reason(s) on form MG6. What can be done to ensure attendance?
- b) Does the witness require 'special measures' as a vulnerable or intimidated witness? Yes ☐ No ☐. If 'Yes' submit MG2 with file.
- c) Does the witness have any specific care needs? Yes ☐ No ☐. If 'Yes' what are they? (Healthcare, childcare, transport, disability, language difficulties, visually impaired, restricted mobility or other concerns?)

IF CHILD WITNESS:

PARENT / GUARDIAN name:
Address (if different to the address of the child) Tel:
Dates of PARENT / GUARDIAN non-availability:
Does the witness's PARENT / GUARDIAN have any specific care needs? Yes ☐ No ☐. If 'Yes' what are they? (Healthcare, childcare, transport, disability, language difficulties, visually impaired, restricted mobility or other concerns?)

Witness Consent (for witness completion)

- a) The criminal justice process and Victim Personal Statement scheme (victims only) has been explained to me: Yes ☐ No ☐
- b) I have been given the leaflet 'Giving a witness statement to the police - what happens next?' Yes ☐ No ☐
- c) I consent to police having access to my medical record(s) in relation to this matter: Yes ☐ No ☐ N/A ☐
- d) I consent to my medical record in relation to this matter being disclosed to the defence: Yes ☐ No ☐ N/A ☐
- e) I consent to the statement being disclosed for the purposes of civil proceedings e.g. child care proceedings (if applicable): Yes ☐ No ☐ N/A ☐
- f) The information recorded above will be disclosed to the Witness Service so that they can offer help and support, unless you ask them not to. Tick this box to decline their services: ☐

Signature of witness:Statement taken by:

Station: Time and place statement taken:



WITNESS STATEMENT

(CJ Act 1967, s.9; MC Act 1980, ss.5A(3) (a) and 5B; MC Rules 1981, r.70)

URN: 36 / /

Statement of: Gary Alan Crowther

Age if under 18: 018 (if over 18 insert 'over 18') Occupation: Police Officer

This statement (consisting of 3 page(s) each signed by me) is true to the best of my knowledge and belief and I make it knowing that, if it is tendered in evidence, I shall be liable to prosecution if I have wilfully stated anything in it, which I know to be false, or do not believe to be true.

Signature: Date 09/03/2013

Tick if witness evidence is visually recorded ☐ (supply witness details on rear)

I am a Police Inspector in Norfolk Constabulary currently stationed at Sprowston Police Station.

On Friday 8th February and Saturday 9th February 2013 I was on uniformed duty as the Public Order Commander for the officers deployed to police the night time economy in Norwich City Centre.

At 2200hrs on each evening I briefed each of the officers involved in the policing operation and split them into separate vans and posted them to each of the four zones from Queens Street in the City centre, along Prince of Wales Road to the Riverside entertainment area.

Once briefing had concluded on each night the officers deployed to their respective zones in their vehicles, where they alight from their vans and patrol the zones on foot. Approximately an hour later I deployed on foot from Bethel Street. To get to Prince of Wales Road I walked along Bedford Street, then Queens Street and Tombland to Prince of Wales Road talking to the door Supervisors of each premise that I passed. Generally in the early part of the shift the attitude of most of the people out on the town is very happy and good natured. I generally get stopped by people as I walk along and engage in general conversation and chit chat with them. During the course of my foot patrol I make a point of liaising with each Sergeant on each zone, talking to the door supervisors and visiting the SOS bus volunteers who are positioned at the bottom of Prince of Wales Road.

Signature: Signature witnessed by:



Continuation Statement Of: Page of

Of the two nights the Friday night was quieter with foot fall lower than the Saturday night and the clubs were not as busy. Due to lack of business some of the Pubs / Clubs actually close earlier on the Friday. It is quite normal for Friday nights to be quieter than Saturday nights.

On the Friday evening I was fortunate to have a police evidence gathering team to deploy who were able to gather evidence of offences with a camera.

Despite the lack of revellers out on the town on the Friday night we still had five arrests. One of these was for Breach of a Court Order, two for assault, one for affray and one for drunk and disorderly.

During the early hours of the morning the atmosphere seems to degenerate and there are lots of really drunk people walking about. There are also lots of people who are under the influence of alcohol, queuing up at the fast food outlets and waiting for taxis. Due to their intoxication there are generally numerous altercations. If we see the beginning of these altercations we are able to stop them quite quickly and send people on their way with a Section 27 Warning Notice.

Three of the previous mentioned arrests took place between 0330hrs and 0430hrs. During the arrest of one of these people, they resisted arrest and assaulted a female officer by throwing her to the ground on her back. This officer although hurt continued with the rest of her shift and although still in pain returned to work the next day but was unable to perform frontline duties. As this arrest was made there were numerous drunken males and females filming us on their mobile phones stating that we were out of order for arresting the subject because she was a female. They were shouting at us in their intoxicated state alleging police brutality and telling us that they were going to put their mobile phone footage on U Tube on the internet. Fortunately this incident and the assault of the officer were recorded on the police evidence gathering team camera. This was also something that the drunken observers took great offence at us filming the incident stating that we were breaching their human rights and breaking the law, despite the fact that they were filming us.

Further to these arrests two persons were stopped and searched and one was found in possession of cannabis.

Overall the Friday night was what I would class as a quiet night. We only a low amount of arrests due to proactive intervention and prevented numerous fights and people getting badly assaulted and only had one officer assaulted who was able to return to work the following day.

Signature: Signature witnessed by:
2004/05(1)

Continuation Statement Of: Page of

On a previous shift one of my officers broke his ankle whilst attempting to arrest a male who resisted arrest. I believe that this officer is still yet to return to full duties.

The Saturday night shift was considerable busier than the Friday with lots more revellers going from club to club. Although once again generally the atmosphere was pleasant with everyone in good spirits however early on, we received a report from the door staff at one of the clubs in Bedford Street reporting a male damaging a car. The door staff took excellent positive action and detained the offender until police arrived and arrested the subject. Later in the shift we also received a report of a fight taking place in Chicago's Club. Once again the door staff took positive action and detained the offender until police arrived and arrested him. These were two examples of the excellent work that some of the door staff do. On other nights I have also been assisted by door staff to arrest violent people and on one occasion a member of door staff from a fast food outlet came to the aid of a police officer who had been attacked from behind and knocked to the ground. If it had not been for the actions of the door supervisor the officer concerned could have sustained serious injury.

At about 0100hrs I spoke to a volunteer nurse Alison Roberts from the SOS bus outside one of the clubs at the top of Prince of Wales Road. She stated that she felt that there was a nasty atmosphere as is something was going to happen. Once again in the early hours the atmosphere degenerated.

During the course of this shift there were a total of twelve people arrested. Two were arrested for criminal damage, one for affray, two for assault, one for assault police, and 6 for drunk and disorderly. Two males were also caught urinating in the doorway of a private residence on Cathedral Street and were issued with Fixed Penalty Notices for disorder. Numerous Section 27 Notices were issued.

Once again I would class this as a successful shift and a quiet shift with only twelve arrests. We were able to prevent numerous altercations taking place with positive action and no one was badly assaulted. Only one officer was assaulted and not badly.

Signature:
2004/05(1)

Signature witnessed by:

Witness contact details

Home address: Sprowston Police Station Postcode:

Home telephone No:

Work telephone No:

Mobile/Pager No:

E-mail address:

Preferred means of contact:

Male ☒ Female ☐ Date and place of birth: 17/04/1967

Former name: Height: 6,1 Ethnicity Code: 1 - White European

Dates of witness non-availability:

Witness care

- a) Is the witness willing and likely to attend court? Yes ☒ No ☐. If 'No', include reason(s) on form MG6. What can be done to ensure attendance?
- b) Does the witness require 'special measures' as a vulnerable or intimidated witness? Yes ☐ No ☒. If 'Yes' submit MG2 with file.
- c) Does the witness have any specific care needs? Yes ☐ No ☒. If 'Yes' what are they? (Healthcare, childcare, transport, disability, language difficulties, visually impaired, restricted mobility or other concerns?)

IF CHILD WITNESS:

PARENT / GUARDIAN name:

Address (if different to the address of the child) Tel:

Dates of PARENT / GUARDIAN non-availability:

Does the witness's PARENT / GUARDIAN have any specific care needs? Yes ☐ No ☐. If 'Yes' what are they? (Healthcare, childcare, transport, disability, language difficulties, visually impaired, restricted mobility or other concerns?)**Witness Consent (for witness completion)**

- a) The criminal justice process and Victim Personal Statement scheme (victims only) has been explained to me: Yes ☐ No ☒
- b) I have been given the leaflet 'Giving a witness statement to the police - what happens next?' Yes ☐ No ☒
- c) I consent to police having access to my medical record(s) in relation to this matter: Yes ☐ No ☐ N/A ☒
- d) I consent to my medical record in relation to this matter being disclosed to the defence: Yes ☐ No ☐ N/A ☒
- e) I consent to the statement being disclosed for the purposes of civil proceedings e.g. child care proceedings (if applicable): Yes ☐ No ☐ N/A ☒
- f) The information recorded above will be disclosed to the Witness Service so that they can offer help and support, unless you ask them not to. Tick this box to decline their services: ☒

Signature of witness: Statement taken by: Self

Station: 9 March 2013 Time and place statement taken: 1925



WITNESS STATEMENT

Criminal Procedure Rules, r 27. 2; Criminal Justice Act 1967, s. 9; Magistrates' Courts Act 1980, s.5B

URN: 36 / /

Statement of: ANTHONY ALBERT ABIGAIL

Age if under 18: over 18 (if over 18 insert 'over 18') Occupation: Police Officer

This statement (consisting of 8 page(s) each signed by me) is true to the best of my knowledge and belief and I make it knowing that, if it is tendered in evidence, I shall be liable to prosecution if I have wilfully stated anything in it, which I know to be false, or do not believe to be true.

Signature:

Date 02/03/2013

Tick if witness evidence is visually recorded ☐ (supply witness details on rear)

I am Temporary Inspector 3124 ABIGAIL stationed at Bethel Street Police Station, Norwich, and on Friday 2nd March 2013 I was the Inspector in charge of the public order of the night time economy in Norwich City Centre. I had seventeen Police Constables and four Police Sergeants covering the nightclub area. I deployed four vans with a sergeant and various numbers of police constables, plus three prisoner vans each containing two officers.

It was a very cold night at 1 degree and quite damp so the numbers of patrons coming to the nightclub area were not as great as I find on a Saturday night. However, the number of patrons doesn't equate to the number of instances of trouble that I encounter, i.e. low numbers do not mean a trouble-free night. What happened on this night is of the same pattern that repeats itself every Thursday, Friday and Saturday night. I commence my public order briefing at 2200 and for the first couple of hours, in general, the public are in the main reasonably friendly and happy to see a policing presence. The clientele are aged up to people in their fifties during this period, especially in zone 1, which is the Queen Street and Tombland area.

After midnight the whole dynamics change and the older clientele tend to go home and the volume of younger people becoming increasingly intoxicated and abuse and drunken behaviour increases. It is not uncommon for groups of young males in their late teens to become relatively intoxicated back at their home addresses outside Norwich City Centre, then travel in to increase their drinking and increase their chances of having a fight. Therefore their

Signature: Signature witnessed by:



Continuation Statement Of: Page of

contribution financially to the night time economy is not great and they are unwelcome and unruly.

At 2314 on Friday 1st March a male wanted for failing to appear for violent offences turned up in Prince of Wales Road and tried to dodge police but was fortunately caught and arrested.

At 0021 on Saturday 2nd March another male was arrested for being drunk and disorderly and within forty minutes another male was arrested for being drunk and disorderly and he resisted arrest by uniformed officers.

At 0030 I parked up my car in St Faith's Lane and began walking towards Prince of Wales Road and you could clearly hear all shouting from drunken males, the thumping tunes out of nightclubs and the general noise of traffic going down Prince of Wales Road. Uniformed officers are deployed on foot so on occasion they will note a vehicle number of a driver being antisocial in driving down Prince of Wales Road, up Rose Lane and back down Prince of Wales Road again, with music blasting out, and generally containing three or four young males. Should a police vehicle be available in the area, then the offending vehicle will be stopped and the driver dealt with according to the situation. There have even been occasions of groups of motorcycles noisily going down Prince of Wales Road and back around again. However, St Faith's Lane has dwellings along it and as you head further towards the river there are specially built apartments for the elderly, so this general noise is totally unwelcome to the residents in the area.

As I came around the corner on to Prince of Wales Road I joined a couple of uniformed officers and no sooner had I done this, than two males fell out of a vehicle and were windmilling blows at one another as they fell to the pavement. Both were arrested, with one being taken to Wymondham Police Investigation Centre and I took the other one with the arresting officer to Aylsham Police Investigation Centre to keep them apart. This happened just outside Mojo's, although they hadn't been in the club that night. There were numerous people in the area who would have seen this fight.

I returned to Prince of Wales Road at about 0300 and still the loudness of the public in drunken shouting at one another, the thump of the music and the traffic continued. By now a number of people had been and were still buying fast food in the restaurants that are open in Prince of Wales Road. This was evident by the amount of fast food wrappers and food that had

Signature: Signature witnessed by:

Continuation Statement Of: Page of

been thrown onto the pavement and into the street, making for a litter strewn area that was completely unsightly.

I began walking up Prince of Wales Road and once again something happened straight in front of me as people erupted out of the door of Dynamite nightclub. This transpired to be two males who had had an altercation inside the club, one having a bloodied nose. I split the pair up with other officers and sent them on their separate ways. The problem with this incident was that one of the protagonists was part of a group of males from Middlesbrough and we needed to get his friends out of the club to get them all away as they were unsure of their way back to where they were staying for the weekend.

There were numerous people now out in the main part of the road, shouting at one another, and even if they were friends together they were happy to shout rude expletives at each other and not converse politely in decent conversation.

I was then flagged down by a private hire taxi driver who had been following a male who had been sick in the back of his vehicle. With Police Sergeant 241 LEWIS we then stopped the alleged offender and took him to a cash point, where he was obstructive and refused to pay the vomiting fee to the taxi driver. The rear seat of the taxi was covered in vomit and it had gone all the way up the window and inside of the door. It absolutely stank and the driver was going to be off the road for the remainder of the night, getting the car cleaned. The male was then arrested on suspicion of criminal damage and taken away to a police investigation centre.

At the top of Prince of Wales Road was a collapsed lady with her friends, who seemed to be under the influence of alcohol. The friends seemed to have the matter in hand and I then walked across to Bank Plain, dodging a large pile of vomit that was on the pavement outside an estate agents' door entrance.

Outside Kartel nightclub, people were milling about and I continued walking down London Street. With the junction of Opie Street a couple of commercial bin bags of waste had been used as a football and kicked across the pedestrianised area putting rubbish everywhere. This is very common on public order nights and on some nights I have come across most of the commercial bin bags of waste kicked across most of the pedestrianised areas.

I walked back round to the top of Prince of Wales Road where I now encountered two ambulances in the vicinity of where the lady had been with her friends. Bearing in mind that the East of England Ambulance Trust is receiving bad Press coverage regarding response times,

Signature: Signature witnessed by:
2004/05(1)

Continuation Statement Of: Page of

we now had two tied up dealing with issues at the top of Prince of Wales Road directly linked to the night time economy.

The pavement of Prince of Wales Road was now absolutely covered in food waste from the fast food outlets.

I turned left into Cathedral Street and I now encountered two of my constables talking to a naked lady wearing only a bra and a police coat to protect her modesty. This turned out to be an assault that we had to deal with and enquiries are still ongoing.

Even at 0415 I still had numerous people at the restaurants, drunkenly eating food and shouting.

It had been a very hard shift of problems with not that many patrons out and about, but the people that were out were causing trouble throughout the night and into the early hours of the Saturday morning.

On Saturday 2nd March 2013 I was the public order inspector for Norwich and had 25 police constables and 4 sergeants on duty under my command. I decided to have four prisoner vans on patrol as I was expecting this night to be busier than Friday 1st March 2013. Again I concentrated the main body of my staff in the Prince of Wales Road area, with lighter numbers of officers in the Queen Street area and lighter numbers in the Riverside area, albeit that the rapper Professor Green was appearing at the Riverside venue Wonderland, with a crowd of over 1000 patrons attending.

There was also a jungle music night at The Talk nightclub, Oak Street, Norwich, and at 2230 one of my prisoner vans checked the venue to make sure all was well. Oak Street is situated outside the inner ring road and all my staffing resources are concentrated in the Prince of Wales Road corridor area, so the best I could do was for roving patrols of Oak Street.

At 2330 that same night I was with Police Sergeant STAFF and his team near Mercy nightclub when we were approached by a door staff member from another nightclub with a driving licence. He was followed by 17-year-old female who had tried to get into the club with this driving licence, which turned out to be her cousin's who was older. If nightclubs are not happy with a patron's age they request some form of identification at the entrance and it is not uncommon for people to be so keen to get into a club that they attempt to use family member's or friend's identification. Despite her repeated pleading, the licence was retained by us.

Signature: Signature witnessed by:
2004/05(1)

Continuation Statement Of: Page of

Outside one of the Mercy bars, just outside the smoking area, there was the occasional sound of smashed glass as bottles or glasses were dropped. This initiated a member of the Mercy team to sweep up the debris immediately but inevitably glass ends up being broken across the pavements and on this night I came across a female who had cut her left foot quite badly whilst walking barefoot down Prince of Wales Road. She was escorted to the SOS Bus for treatment to her injury. There was then an almighty clatter outside the Mercy smoking outside area as a male fell to the ground whilst trying to hold onto the metal gate. The male was uninjured but keen now to go back to his friends in the smoking area and was quite rightly not allowed to do so, to which his friends objected. We had to intervene and send the male on his way.

I had parked my vehicle in Recorder Road at 0050 on Sunday 3rd March, opposite Browne's Meadow, and noticed some eastern European males further up the road, approximately five in number. In the past there have been problems with eastern European males street drinking in this area of primarily elderly people and I immediately went to see them. They were polite and friendly and had no alcohol visible and walked up Recorder Road towards Prince of Wales Road and past my vehicle. I went and looked at their vehicle. I had seen the group of males stop at the top of Recorder Road but from some distance. When I returned to my vehicle, about 10 metres further up from it, warm steaming liquid, which I presumed to be urine was dripping out of the bottom of the yew hedge and running down the pavement. It was a cold, dry night, so I presume this was urine. The males had now gone but I walked round the road and every few metres I could see what appeared to be urine running across pavements. This is something that is so common on public order nights. Years ago people would leave nightclubs and head home but since the advent of the 2003 Licensing Act and extensive licences given to fast food outlets in Prince of Wales Road until 0500 in the morning, males will hang about for considerable periods of time and having consumed copious amounts of alcohol, will seek any area they can that they presume is out of sight and urinate. This disgusting practice then has both residents and business people having to clean their areas in the morning.

From midnight until 0530 on Sunday 3rd March we had nothing but constant trouble in Prince of Wales Road, both outside nightclubs and more importantly at the fast food restaurants in Prince of Wales Road which for me as the morning progresses become epicentres for disorder. I had intended to conduct a walk of the back streets of the night time

Signature: Signature witnessed by:
2604/05(1)

Continuation Statement Of: Page of

economy, as I had done Friday to Saturday, but this was rendered impossible by the trouble in Prince of Wales Road. There were fights after fights outside the nightclubs and fast food restaurants and officers were up and down the roads and side streets, making arrests, giving people section 27 notices to leave the area, separating warring factions. The fights included one Polish male punching two males in the face in the middle of the top of Prince of Wales Road, giving one male a possible broken nose; one male allegedly waving a broken bottle towards a female after two warring factions had come to blows again in the middle of the road; a male actually getting into a police van in order to assault an officer by kicking him; multiple reports of mobile phone thefts from nightclubs during the night; a male arrested on suspicion of drug possession outside one of the clubs; a number of arrests for people being drunk and disorderly and also for breaching their section 27 notices to leave the area; a massive fight that erupted inside Piccolo's restaurant and spilled out onto the pavement, that required a large number of officers to separate all parties.

We also had a young lady passed out through alcohol and laying outside the door of The Olive Tree Restaurant, covered in vomit, this being at about 0400 on the Sunday morning. I endeavoured to get the very helpful SOS Bus people to assist but they had stood down at 0300. This is another aspect of the later licensing times in that the SOS Bus finishes at precisely the time when they are probably in greater demand therefore safety of some of the clubbers is endangered.

One particular difficult arrest that happened as a result of the Piccolo's fallout was a female who had to be put in emergency restrain belts and transported in a large van to a custody facility, this being at about 0430 on a Sunday morning.

By 0500 in the morning there were still approximately 100 people milling about in groups outside the fast food outlets in Prince of Wales Road and I still had officers driving to custody suites with prisoners and other officers who I let go in order to put together the copious number of prisoner handover papers that needed to be completed. I had one prisoner van on a mobile patrol to keep the area in order and as I left the scene it looked like the aftermath of a major disorder with broken bottles, litter, vomit strewn everywhere.

The early shift at Bethel Street Police Station came on at about 0630 on Sunday morning 3rd March 2013 and immediately got involved in a vehicle pursuit of a group of males in a BMW suspected of drug dealing from just off Prince of Wales Road, so in effect there was a continuation of the disorder from all the way through the night to our early shift.

Signature: Signature witnessed by:

Continuation Statement Of Page of

Prior to the Licensing Act 2003 it was usual in Norwich for the night time economy area of Tombland and Wensum Street to be flooded with people from 0200 to 0300 on Saturday and Sunday mornings and there to be disorder. It was felt that the longer licensing hours would enable a spread of people to leave the city and reduce disorder. This has clearly not happened and the disorder now continues for hour after hour, meaning that officers are arresting people for night time-related offences beyond 0500 in the morning and then having to complete the paperwork beyond their tours of duty.

Signature: Signature witnessed by:
2004/05(1)

Witness contact details

Home address: Postcode:

Home telephone No: Work telephone No:

Mobile/Pager No: E-mail address:

Preferred means of contact:

Male ☐ Female ☐ Date and place of birth:

Former name: Height: Ethnicity Code: 1 - White European

Dates of witness non-availability:

Witness care

- a) Is the witness willing and likely to attend court? Yes ☐ No ☐. If 'No', include reason(s) on form MG6. What can be done to ensure attendance?
- b) Does the witness require 'special measures' as a vulnerable or intimidated witness? Yes ☐ No ☐. If 'Yes' submit MG2 with file.
- c) Does the witness have any specific care needs? Yes ☐ No ☐. If 'Yes' what are they? (Healthcare, childcare, transport, disability, language difficulties, visually impaired, restricted mobility or other concerns?)

IF CHILD WITNESS:

PARENT / GUARDIAN name:

Address (if different to the address of the child) Tel:

Dates of PARENT / GUARDIAN non-availability:

Does the witness's PARENT / GUARDIAN have any specific care needs? Yes ☐ No ☐. If 'Yes' what are they? (Healthcare, childcare, transport, disability, language difficulties, visually impaired, restricted mobility or other concerns?)**Witness Consent (for witness completion)**

- a) The criminal justice process and Victim Personal Statement scheme (victims only) has been explained to me: Yes ☐ No ☐
- b) I have been given the leaflet 'Giving a witness statement to the police - what happens next?' Yes ☐ No ☐
- c) I consent to police having access to my medical record(s) in relation to this matter: Yes ☐ No ☐ N/A ☐
- d) I consent to my medical record in relation to this matter being disclosed to the defence: Yes ☐ No ☐ N/A ☐
- e) I consent to the statement being disclosed for the purposes of civil proceedings e.g. child care proceedings (if applicable): Yes ☐ No ☐ N/A ☐
- f) The information recorded above will be disclosed to the Witness Service so that they can offer help and support, unless you ask them not to. Tick this box to decline their services: ☐

Signature of witness:Statement taken by:

Station: Time and place statement taken:



Crime Number	Crime Banding	Summary Description Text	Company Organisation Name - if linked	Premises Name	date
15575/12	Violence Against Person	Whilst dealing with another incident Police were made aware by door staff member that he has been bitten on the hand whilst detaining a male.	MOJOS	60-62 Prince Of Wales Rd	01/04/2012
14793/12	Violence Against Person	ABH injuries suffered as a result of assault outside nightclub by u/k persons.	CLUB NIGHT CLUB	Prince Of Wales Rd	05/04/2012
14584/12	Violence Against Person	Police were dealing with a male for public order related incident during which a the victim was talking a male standing watching the police when all of a sudden the D/P ran up to the victim and pushed her in the back pushing her to the floor. The victim	ESSENCE	63-67 Prince of Wales Rd	06/04/2012
14561/12	Violence Against Person	Punch to face of victim causing injury - common assault	MOJOS	60-62 Prince Of Wales Rd	06/04/2012
14952/12	Violence Against Person	Offender was fighting with the victim outside Mojos during which she punched her in the face causing bruising to the victims forehead. No other injuries were caused.	MOJOS	60-62 Prince Of Wales Rd	08/04/2012
15134/12	Violence Against Person	Allegation of minor assault outside club		Prince Of Wales Rd	09/04/2012
15628/12	Violence Against Person	Victim, Alex ALSTON, 07/08/93, has been assaulted by two unknown males whilst on the dance floor in Lola Lo's. The first offender has punched the victim on the side of his face and the second male has head butted him three times across the nose. The off	LOLA LO	Bank Plain	12/04/2012
15648/12	Violence Against Person	Person(s) unknown punched u/p in back of head for unknown reasons. Offender then grabbed shin causing this to rip. u/p falls to floor where further punches were thrown before offender runs off just prior to passing police patrol.		Upper Kings St	13/04/2012
15638/12	Violence Against Person	Victim hospitalised following assault by u/k drunk male o/s club.	FLUKE	Prince Of Wales Rd	13/04/2012
16337/12	Violence Against Person	Victim has been assaulted in Norwich City Centre whilst out with friends. Assault has resulted in injuries to the victim being a graze to the forehead, a blackened right eye and a cut to the back of the head.		Bank Plain	17/04/2012
17137/12	Violence Against Person	Between stated times the D/P has been verbally abusive towards door staff and then proceeded to spit in his face after refused entry	CARNIVAL	Queens St	21/04/2012
17552/12	Violence Against Person	At material times offender has been ejected from Pulse nightclub, and has been seen by CCTV to punch one of the doorman. Male arrested, no visible injuries sustained.	PULSE	Prince Of Wales Rd	21/04/2012
17687/12	Violence Against Person	Allegation of minor assault - common assault injuries. Victim intoxicated.	TAO CLUB AND LOUNGE	Prince Of Wales Rd	22/04/2012
18143/12	Violence Against Person	Whilst in the Queen of Iron P.H. the victim, , was assaulted by another male without provocation by being punched to the face. There are no injuries.		QUEEN OF IRON Riverside	28/04/2012

19014/12	Violence Against Person	Police on public order patrol attend outside Beeline Taxi's, Prince of Wales Road, Norwich following a report of a fight. A suspect was pointed out by members of the public and the suspect was arrested at scene. The victim was identified and had a cut	BEELINE TAXI	Prince Of Wales Rd	29/04/2012
18091/12	Violence Against Person	Female was dancing on upper dance floor of Mojos with her friend when a group of males came over from the vip area. One of the males began paying the females unwanted attention and grabbed the victims friend by the wrist. The victim has grabbed the m	MOJOS	60-62 Prince Of Wales Rd	29/04/2012
18495/12	Violence Against Person	Taxi driver picked up fare in Tombland subsequently assaulted over dispute about payment	MAIDS HEAD HOTEL	Tombland	29/04/2012
19126/12	Violence Against Person	Victim leave club for quick cigarette. Is assaulted by punching resulting in cuts and broken nose	THE LOFT	Rose Lane	05/05/2012
19260/12	Violence Against Person	Victim had walked out of Fluke and was standing on the side of the road when an unknown male came up to him and punched him in the face causing his nose to bleed and this also caused a cut to the inside of his lip.	FLUKE	Prince Of Wales Rd	06/05/2012
19248/12	Violence Against Person	An altercation occurred between male IP and unknown offender, which resulted in the u/k offender kicking the male IP in the head when he was on the floor.	COMPLEAT ANGLER	Prince of Wales Rd	06/05/2012
19307/12	Violence Against Person	Assault inside nightclub - minor injuries	MOJOS	60-62 Prince Of Wales Rd	06/05/2012
19595/12	Violence Against Person	BETWEEN STATED TIMES VICTIM STATES HE WAS PUNCHED IN THE FACE BY ANOTHER CLUBBER WHILST IN A NIGHTCLUB AND HAS SUSTAINED A NOSE BLEED.	LOLA LO	Bank Plain	07/05/2012
19437/12	Violence Against Person	Victim punched to head twice whilst in nightclub following argument with drunk male. Bruising and soreness injuries	PULSE	Prince Of Wales Rd	07/05/2012
19420/12	Violence Against Person	The victim was talking with an ex girlfriend outside the club, when another male who is a much more recent ex boyfriend of the same female walked by. He saw what was going on and assumed they were about to get into a taxi together, and as a result assaulted vtm by beating	TAO	Prince Of Wales Rd	07/05/2012
20543/12	Violence Against Person	whilst outside Frankie & Bennys restaurant victim has been punched in face several times by u/k persons for u/k reasons. Minor injuries	OUTSIDE FRANKIE & BENNY'S	Riverside Development	12/05/2012
20379/12	Violence Against Person	member of public has witnessed male assaulting another male and has detained offender for police on public order. He has witnessed male being arrested by police. linked CR 20373/12/2	SPENCERS	Prince Of Wales Rd	13/05/2012
21554/12	Violence Against Person	Allegation of assault inside nightclub resulting in bruising to back	CARNIVAL	Queen St	13/05/2012
20411/12	Violence Against Person	VICTIM ALLEGES WHILST OUT IN NORWICH CITY CENTRE HE WAS PUNCHED IN THE FACE CAUSING NO INJURY	CHINA INN	Prince Of Wales Rd	13/05/2012

21896/12	Violence Against Person	male was stood in the layby outside pulse when he was tapped on the shoulder and when he turned around he was punched in the face causing a black eye. Then another male then tapped the lip on the shoulder and as he turned round he was punched in the face again knocking out 3 teeth, a severe cut to the lip requiring stitches and a suspected broken nose.	PULSE	Prince Of Wales Rd	20/05/2012
21456/12	Violence Against Person	Dispute over use of a cashpoint. Common assault injuries inflicted on two victims. Offender leaves Queens St Cashpoint and goes into premises on Bank Plain		Queen St Bank Plain	20/05/2012
21455/12	Violence Against Person	Dispute over use of a cashpoint. Common assault injuries inflicted on victim. Offender leaves Queens St Cashpoint and goes into premises on Bank Plain		Queen St / Bank Plain	20/05/2012
21461/12	Sexual Offences	Victim touched in inappropriate area by drunk male she had been asiling. Suspect u/k to victim and had previously collapsed due to being drunk		Prince Of Wales Rd	20/05/2012
21542/12	Violence Against Person	Common Assault: Suspect is alleged to have punched a member of door staff during a struggle in the reception area of the nightclub. Evidence to show that the suspect was heavily intoxicated.	MEDIA NIGHT CLUB	Rose Lane	20/05/2012
22794/12	Violence Against Person	DURING THE ABOVE TIMES MEMBER OF DOOR STAFF ALLEGES HE WAS SPAT IN THE FACE. REPORTED TO POLICE PATROL	ESSENCE	63-67 Prince of Wales Rd	27/05/2012
26070/12	Violence Against Person	Male found unconscious on floor by police. Witnesses state that he was assaulted by u/k male who had left area. Victim recovers and has bumps / bruises	100 NIGHTS	78-80 Prince Of Wales Rd	27/05/2012
25711/12	Violence Against Person	Between stated crime date and time, person unknown has spat in her face whilst leaving a nightclub.	KARTELS	London St	01/06/2012
24719/12	Violence Against Person	[Information from STORM] CAD Incident: NC-04062012-187. Call type: VIOLENCE AGAINST PERSON (CRO1) Officer in Case: SARA WARD. Received on: 04 Jun 2012 13:33:43. Crime Banding: VIOLENCE AGAINST PERSON IP was in MOJOS nightclub. She was going up the s	MOJOS	60-62 Prince Of Wales Rd	03/06/2012
24008/12	Violence Against Person	Between above times IP has been in Bar 11 when her ex partner has entered the venue with a group of his friends. Confrontation follows leading to assault with a/bn injuries involving parties	BAR 11	Upper Kings St	04/06/2012
25570/12	Violence Against Person	PERSON The IP has reported having his nose broken whilst in nightclub following altercation with u/k male	PULSE	Prince Of Wales Rd	07/06/2012
24946/12	Violence Against Person	Between stated times the victim has been punched in the back of the neck by unknown person/s after getting caught up in the crossfire of a fight which was occurring behind her. As a result of getting punched she now has a stiff neck. The incident occur	MOJOS	60-62 Prince Of Wales Rd	09/06/2012
24858/12	Violence Against Person	Police Officer bitten on arm by offender being restrained for disorder offences		Riverside Development	10/06/2012
24945/12	Sexual Offences	Restricted due to nature of offence - sexual offence drink offender in NTE		Queens St	10/06/2012

24995/12	Violence Against Person	Male victim has been assaulted by another male during an altercation between two parties at above location. Victim has sustained bruising and cuts to his face, pain and swelling to his nose and pain to his head.			London St	10/06/2012
33342/12	Violence Against Person	IP was shoved to the floor and struck in the face by the suspect whilst outside The Kings Public House During the relevant times an altercation has occurred over a jacket, the suspect lashing out at several people and punching the IP in the face.	KINGS P.H		27-29 King St	16/06/2012
25883/12	Violence Against Person	Male assaulted in nightclub suffering two black eyes	Bedford St		KAFF KARMA	16/06/2012
25952/12	Violence Against Person	Victim leave nightclub on Prince Of Wales Rd and is sexually assaulted by two males in adjacent alleyway	CARNIVAL		Queens St	16/06/2012
26701/12	Sexual Offences	This is a allegation of assault with injuries amounting to ABH. The IP has alleged that he was assaulted by an unknown male outside the MASTER CHEF take away on PRINCE OF WALES ROAD, NORWICH. Bruising and marks to face			Prince Of Wales Rd	20/06/2012
27227/12	Violence Against Person	Between above times, the IP has been hit in the face by an unknown offender both inside and outside New York New York, Prince of Wales Road. On initial assessment, victim appeared to have facial injuries and was taken to hospital. Altercation has occurred in the male toilets of Roccos. Assault follows - common assault injuries.	MASTER CHEF		Prince Of Wales Rd	24/06/2012
27848/12	Violence Against Person	IP walking home through Tombland onto Mag St and starts conversation with another male. Argument commences with victim being punched to ground for no apparent reason	NEW YORK NEW YORK		82-88 Prince Of Wales Rd	28/06/2012
28169/12	Violence Against Person	IP assaulted victim outside a nightclub by punching him to the head	ROCCO'S			30/06/2012
28178/12	Violence Against Person	BETWEEN STATED TIMES VICTIM AND GROUP OF FRIENDS WERE WALKING ALONG PRINCE OF WALES ROAD WHEN AN ALTERCATION TOOK PLACE BETWEEN THEM AND THE SUSPECT WHO IS NOT KNOWN TO THEM. THE SUSPECT HAS THEN PUNCHED THE VICTIM IN HIS LEFT EYE AND KNOCKING HIM TO THE ground			Tombland	30/06/2012
28684/12	Violence Against Person	[Information from STORM] CAD Incident: NC-05072012-65. Between crime times victim has been walking along PRINCE OF WALES ROAD, NORWICH when the suspect, not known to her, has approached her and become aggressive. An argument has taken place which has resulted in an assault with minor injury	MOJOS		60-62 Prince Of Wales Rd	01/07/2012
28543/12	Violence Against Person	between crime times, victim has been walking along PRINCE OF WALES ROAD with his friend when a female has attacked his female friend in an unprovoked attack, whilst trying to defend his friend the victim has been punched in the head several times	Prince Of Wales Rd		CHICAGO'S	01/07/2012
29043/12	Violence Against Person				Prince Of Wales Rd	05/07/2012
36395/12	Violence Against Person		OUTSIDE MOJOS		Prince Of Wales Rd	05/07/2012

29419/12	Violence Against Person	Victim drank with friends in Mojo's in the early hours of Saturday morning. He came out to get a taxi home, was randomly approached by a stranger. Suspect got in his face, said "DO YOU WANT A FIGHT? ... I'M GOING TO BITE YOU." Suspect proceeded to bite	MOJOS	60-62 Prince of Wales Rd	07/07/2012
29429/12	Violence Against Person	Between the above stated times a group of identified males have allegedly enticed a male into the alleyway near to Mattressman, just off Prince of Wales, Norwich. The group of males have been heard to say 'COME DOWN HERE WHERE THERE IS NO CCTV' On doing	Outside MATTRESSMAN LTD	Prince Of Wales Rd	07/07/2012
29426/12	Violence Against Person	At the above times Adam, who was staying at the Hotel Nelson was standing out the front of the main entrance when he was approached by 2 unknown male who were abusive towards him and then punched him a number of times. Resident of housing just off NTE finds woman drunk and urinating in garden in early hours. He challenges her and she assaults him pinching to the face	NELSON PREMIER INN	Prince Of Wales Rd	07/07/2012
29586/12	Violence Against Person			NTE area	08/07/2012
29656/12	Violence Against Person	Two males were walking up Chalkhill Road following a night out down Prince of Wales Road, as they were walking up a group of around 4- persons believed with them earlier in the night assaulted them causing A&H injuries		Churchill Rd / Prince Of Wales Rd	08/07/2012
29605/12	Violence Against Person	Reprisal attack following earlier assault. Punch on nose - minor injury		Prince Of Wales Rd	08/07/2012
29625/12	Sexual Offences	Restricted due to nature of offence		Prince of Wales Rd	08/07/2012
31090/12	Violence Against Person	The victim who was very drunk was leaving a club when he confronted a male who was standing outside about looking at his girlfriend. At this point the male had a go at the victim and followed him along Bank Plain, during the confrontation the male hit		Bank Plain	15/07/2012
30856/12	Violence Against Person	Between stated times IP was at work at Chicago's working as a glass collector. An unknown female asked him his name. Female then grabbed him by the neck of his t-shirt snapping his necklace. Said "You did nasty things"	CHICAGO ROCK CAFE	24-26 Prince Of Wales RD	15/07/2012
31854/12	Violence Against Person	The victim is intoxicated on walking alone outside Arnolds, Upper Kings Street, Norwich when he is approached by a group of unknown males. One of the males begins to search the victims pockets without his knowledge to search for money/items of value. Th		Upper Kings St	21/07/2012
31850/12	Violence Against Person	Assault suspect shown approaching victim and punching him on the right side of upper lip using a clenched right fist, causing lip to swell and bleed		THE OFFICE Upper King St	21/07/2012

33650/12	Violence Against Person	VICTIM WAS VERY DRUNK WHEN THE INCIDENT OCCURRED AND HAS A LIMITED RECOLLECTION OF EVENTS. HE CAN RECALL BEING ON THE DANCE FLOOR WHERE A BOTTLE HAD BEEN DROPPED AND SMASHED. HE WAS AWARE OF BEING PUSHED BUT NOT WHAT HAPPENED IMMEDIATELY AFTERWARDS. ONE OF HIS FRIENDS TOLD HIM THAT HE HAD ENDED UP ON THE FLOOR. HE BELIEVES THE CUTS TO HIS HANDS HAD BEEN CAUSED THIS WAY. HE CAN RECALL HIS FRIEND HAVING HIS SHIRT RIPPED. BUT NOT BEING PUNCHED IN THE FACE. THOUGH HIS FRIENDS TOLD HIM HE HAD BEEN. HE HAS A BRUISE TO HIS LEFT EYE. HE STATED THAT HIS FACE HAD BEEN SWOLLEN ON THE SUNDAY AND STILL ACHED.	LOLA LO	Bana Plain	29/07/2012
33035/12	Violence Against Person	[Information from STORM] CAD Incident: NC-29072012-121. Call type: VIOLENCE AGAINST PERSON [CR01] Officer in Case: MARK DANIELS. Received on: 29 Jul 2012 04:17:28. Crime Banding: VIOLENCE AGAINST PERSON. Fight between two females in club leading to ABH injuries - sore ribs, hair pulled out of head. Required intervention by door staff then police.	2 - OUBE NIGHT CLUB	Prince of Wales Rd	29/07/2012
34007/12	Violence Against Person	At material times verbal argument between entertainment dancers. Offender has assaulted another dancer, crime number: CB34004/12/7. Offender has thrown glass of drink into the face of the victim. No injuries.		LACE Prince of Wales Rd	04/08/2012
34697/12	Violence Against Person	[Information from STORM] CAD Incident: NC-04082012-100. Call type: VIOLENCE AGAINST PERSON [CR01]. Received on: 04 Aug 2012 03:18:43. Crime Banding: VIOLENCE AGAINST PERSON. During the above crime times the victim has been assaulted - beaten unconscious and left in street.	Outside BUDGENS LOCAL	Prince of Wales Rd	04/08/2012
34597/12	Violence Against Person	[Information from STORM] 2012 03:23:11. Crime Banding: THEFT OTHER (p), works as a taxi driver for BEELINE taxi's. Drunken fare picked up from night club would not pay for service - argument and assault followed.		Tombland	06/08/2012
34875/12	Violence Against Person	[Information from STORM] CAD Incident: NC-09082012-49. Call type: VIOLENCE AGAINST PERSON [CR01] Officer in Case: MATTHEW HILARY. Received on: 09 Aug 2012 03:01:40. Crime Banding: VIOLENCE AGAINST PERSON. Two parties previously known to each other meet in NTE area and fight over historic disputes. Parties intoxicated.	CASTLE SERVICES	Rose Lane	09/08/2012

35635/12	Violence Against Person	Suspect WORTON has approached ex partner Beth WILSON and her new boyfriend Chris BARTUM in doorway of Best Kebab takeaway. NORTON has punched BARTUM twice in the face causing minor bruising and pushed WILSON and slapped her in the face, causing no b	BEST KEBAB SHOP	Prince of Wales Rd	12/08/2012
36549/12	Violence Against Person	Victim has been assaulted by known suspect who punched her twice to the jaw with closed fists causing pain but no visible injury.	PULSE	Prince of Wales Rd	19/08/2012
37974/12	Violence Against Person	At material times a verbal argument has taken place over use of cashpoint. Offender has then followed victim and punched him in full view of Police and arrested and taken to PIC. No visible injuries.		Prince of Wales Rd	27/08/2012
38003/12	Violence Against Person	[Information from STORM] CAD Incident: NC-27082012-224. Call type: VIOLENCE AGAINST PERSON (CR01). Received on: 27 Aug 2012 12:42:14. Victim was talking to his friend outside cube nightclub. Assaulted for unknown reasons by 1/1K male suffered broken nose	OUTSIDE CUBE	Prince of Wales Rd	27/08/2012
37827/12	Violence Against Person	Violent fight between three males leading to A&H injuries to all parties. Offenders stumble into window during attack causing it to break.	FLUKE	Prince of Wales Rd	27/08/2012
41206/12	Violence Against Person	IP works as a door supervisor at Fluke and was escorting the DP from the club for fighting when the DP hit the IP in the face causing a minor injury to the IP's nose.	FLUKE	Prince of Wales Rd	16/09/2012
41330/12	Violence Against Person	Male has been in Laze strip club and has been in one of the private areas at the rear of the club. He has then been punched by a male in an unprovoked attack, causing a nose bleed and a split lip. IP states that there were a female dancers in the room a	LACE	Prince of Wales Rd	16/09/2012
42661/12	Violence Against Person	Male knocked unconscious in Fluke nightclub. No lasting injuries - black eye suffered	FLUKE	Prince of Wales Rd	20/09/2012
43371/12	Violence Against Person	Fight inside Essence nightclub. Victim punched to head causing bleeding - not serious -	ESSENCE	63-67 Prince of Wales Rd	28/09/2012
43410/12	Violence Against Person	2 male friends assaulted outside Kartel nightclub. Victim 1 was punched in the face by a female causing a split lip. Her male friend then punched victim 1 twice in the face.	KARTEL	London St	29/09/2012
43526/12	Violence Against Person	2 male friends were assaulted outside Kartel nightclub. The 2nd male was punched in the face and knocked unconscious.	KARTEL	London St	29/09/2012
44416/12	Violence Against Person	Assault on female (leading to bad cut to head) inside Kebab shop after clubs had closed. Victim was taken to A&E and checks made ref fractured skull before her wound was glued. Victim has little recollection of incident	BEST KEBAB SHOP	Prince of Wales Rd	06/10/2012
44551/12	Violence Against Person	offender has punched 1/P in face, causing a split lip (which was glued at hospital), during verbal altercation		Prince of Wales Rd	07/10/2012

45020/12	Violence Against Person	Victim assaulted whilst eating Pizza following night out. Offender located following street ID procedures		Prince of Wales Rd	10/10/2012
45181/12	Violence Against Person	Male in dispute with other party. Fight follows where victim receives bruising to face from punches. Occurs inside nightclub	TAO CLUB AND LOUNGE	Prince of Wales Rd	11/10/2012
45698/12	Sexual Offences	Indecent assault of female inside male toilets of nightclub	KARTEL	London St	14/10/2012
45985/12	Violence Against Person	Drunk victim reports being attacked by 6-8 males causing cut to head and nose bleed.	THE OFFICE	19A, Upper King St	16/10/2012
55799/12	Violence Against Person	Assault involving group out celebrating together from local football team. All parties known to each other. Incident occurred following night of drinking	MERCY NIGHTCLUB	90-96 Prince of Wales Rd	21/10/2012
47346/12	Violence Against Person	Male victim has been walking with a female he met in a bar, whilst walking through Tombland he has been approached by 3 unknown males. One of the males became aggressive towards him and then punched him twice in the head causing a cut lip. Police co	Tombland		24/10/2012
47751/12	Violence Against Person	Whilst on public order patrol officers attempt to arrest suspect COVLES for criminal damage after he was identified as responsible for smashing the window of a taxi. He became violent resisted arrest and pava was deployed. He then punched PC 1642 HARRIS to the face causing her nose to bleed, become swollen and red.	MASTER CHEF	Prince of Wales Rd	27/10/2012
47871/12	Sexual Offences	Sexual assault linked to NTE	Zone 1 area	2.01212+16	27/10/2012
48537/12	Violence Against Person	BETWEEN STATED TIMES MALE ALLEGES THAT HE WAS HEAD BUTTED RESULTING IN CRACKED TEETH & BLEEDING NOSE	KARTEL BAR LTD	London St	01/11/2012
48726/12	Violence Against Person	Person unknown has punched victim in the face causing a nose bleed.	KARTEL	London St	02/11/2012
48881/12	Violence Against Person	During stated times, male victim has been punched in the face by an unknown male after a verbal altercation, giving him a fat lip		Tombland	03/11/2012
50345/12	Violence Against Person	VICTIM STATES HE WAS HIT IN THE FACE BY AN U/X MALE CAUSING BRUISING TO FACE AND POSSIBLE BROKEN NOSE	KARTEL	London St	09/11/2012
50099/12	Violence Against Person	IP states that he was 'jumped' from behind, no idea who or how many. Suffered split lip and teeth knocked out of place. Unable to establish victim contact due to victim being drunk and very distressed.	MERCY NIGHTCLUB	90-96 Prince of Wales Rd	11/11/2012
51323/12	Violence Against Person	Fight in street leading to minor injuries to victim but also broken window of adjacent premises caused by victim falling into glass	MOJOS	60-62 Prince of Wales Rd	18/11/2012
52342/12	Violence Against Person	Police were on patrol in Prince of Wales Road when they were alerted by door staff to an allegation of assault in the club. The victim stated he had been punched on the jaw by an unknown male - minor injuries	MOJOS	60-62 Prince of Wales Rd	24/11/2012

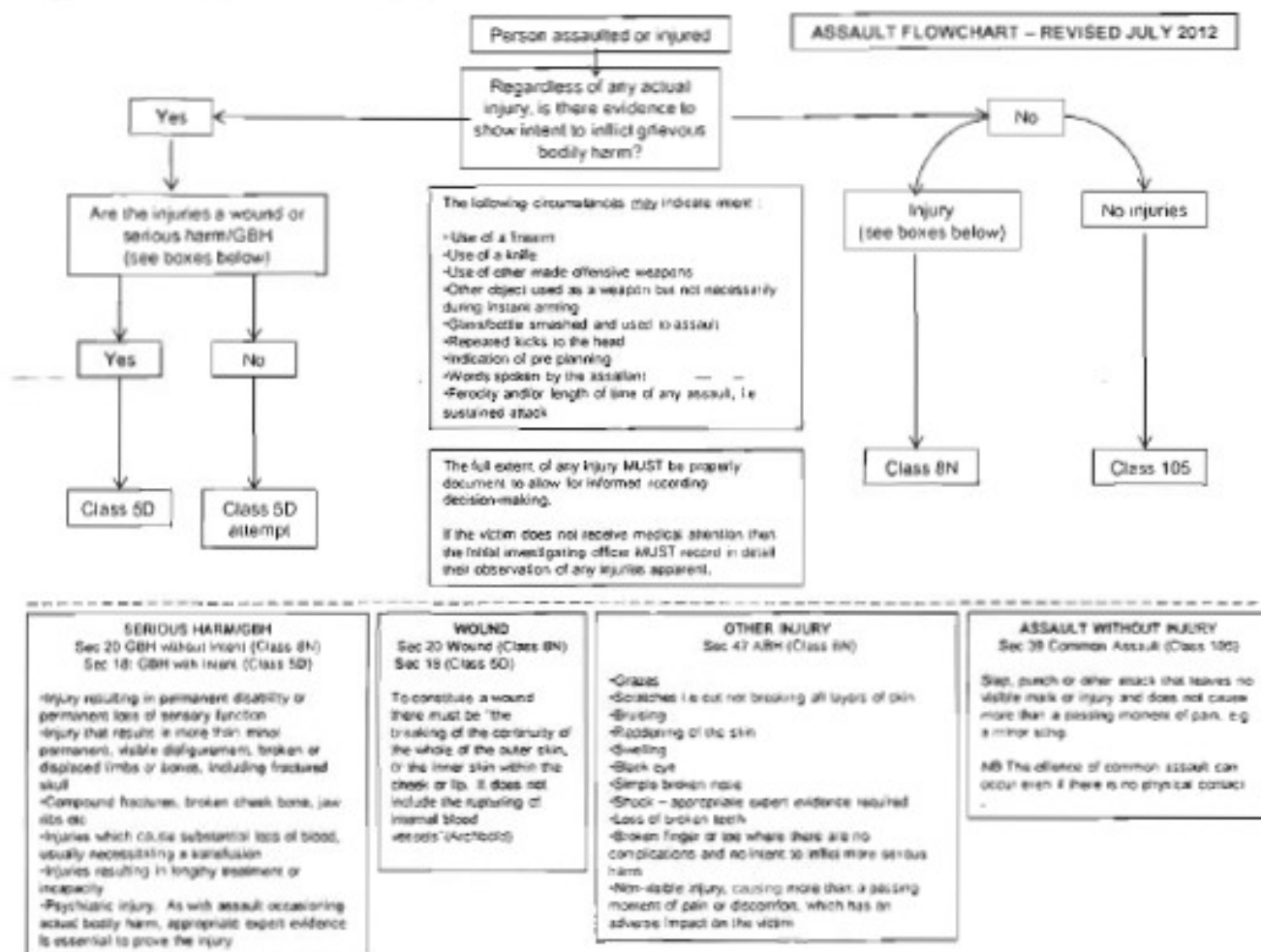
52258/12	Violence Against Person	On the times and date stated above victim was standing outside the above venue with his friend. Victim states that a male jumped out of a blue vehicle and punched him the face for no apparent reason.	TRAVEL LODGE HOTELS LTD	St Vidas St	24/11/2012
53562/12	Violence Against Person	This was an incident that occurred at the main door of Essence nightclub. The Suspect I was let into the club by door staff in order to speak to his wife who was inside. It appears he has had an argument with her then left the club and punched a doorman on the way out. The victim had been out with friends at The Loft when he was approached by a female whom the victim used to be friends with. A conversation between the two took place during which, the victim states that the female pushed him with both hands in the chest area causing the victim to stumble backwards.	ESSENCE	63-67 Prince of Wales Rd	02/12/2012
54367/12	Violence Against Person			THE LOFT Rose Lane	07/12/2012
55073/12	Violence Against Person	Victim has consumed approx 8 pints in City centre. Reports being assaulted by 4/5 males on his walk home causing bruising to face and cuts		Offence occurs Neigham St but offenders and victim all drinking in RTE immediately before assault	15/12/2012
55579/12	Violence Against Person	[Information from STORM] CAD incident: NC-15122012-102. whilst trying to treat offender, offender has become abusive and aggressive and elbowed UP in the face causing no visible injuries		Prince of Wales Rd	15/12/2012
6845/13	Violence Against Person	Street assault involving minor common assault injuries. Unknown attacker believed drunk attacks passerby on street		Prince of Wales Rd	15/12/2012
55750/12	Violence Against Person	Female was dancing in Cube nightclub with a female friend and an old male school mate. When the female took the scarf of the male friend and started to dance with it, the male friend's girlfriend punched the female. male slapped victim on the face then outside the club male and his friend punched the victim in the face then several males started fighting and the victim was punched by several other people. Victim has a black eye and some swelling to the cheek bo	CUBE	Prince of Wales Rd	16/12/2012
56746/12	Violence Against Person		TAD CLUB AND LOUNGE	Prince of Wales Rd	21/12/2012
56571/12	Violence Against Person	Victim arrives at his place of work in early hours. Assaulted by two drunk males who were attempting to enter his work place as believed a party was taking place inside. Male victim punched once to the face by male offender after alcohol fuelled confrontation. Offender identified to Police at scene by victim. Injuries bloody nose and soreness to right cheek.		Zone 1	21/12/2012
56950/12	Violence Against Person		Outside THE FITNESS FIRST	Riverside Development	23/12/2012

57153/12	Violence Against Person	Information from STORM CAD Incident: NC-25122012-75. suspect has punched I/P in the face causing a split lip which required stitches	FLUKE	Prince of Wales Rd	25/12/2012
57434/12	Violence Against Person	Between stated times the victim was in Fluke Nightclub, Norwich when he was punched once in the face by a male known to him, causing soreness and bruising to his nose.	FLUKE	Prince of Wales Rd	25/12/2012
57156/12	Violence Against Person	an unknown Eastern European male has punched the I/P in the face. The I/P has confronted the suspect, before he has been punched again. The I/P has then threatened to knock out the suspect before being moved on by police. The I/P has then been squaring up to numerous other members of the public before being attacked by 4 unknown Eastern European males, causing his nose to bleed.	LOLA LO	Bank Plain	25/12/2012
57720/12	Violence Against Person	BETWEEN STATED TIMES FEMALE WAS IN THE KEBAB SHOP WHEN SHE ASSISTED IN REMOVING THE SUSPECT WHO WAS BEING RACIALLY ABUSIVE TO STAFF. SHE WAS THEN PUNCHED IN THE FACE CAUSING NO INJURY OTHER THAN SORENESS	TOP KAPI	Rose Lane	27/12/2012
57718/12	Violence Against Person	CUSTOMER WAS IN THE KEBAB SHOP WHEN HE HEARD THE SUSPECT RACIALLY ABUSE THE SHOP OWNER, HE INTERVENED AND WAS PUNCHED IN THE FACE CAUSING NO INJURY	TOP KAPI	Rose Lane	27/12/2012
57656/12	Violence Against Person	victim Had just come out of the Kebab house next to Tesco on Prince of Wales Road with his friend, whilst outside he was approached by a group of about 4 people three males and one female. Two of the males were dressed up as 'Oompa Loompas' from Charlie and the Chocolate Factory with painted orange faces and dyed green hair. They were wearing hooped tops. The female in the group had dark hair and a dress with a split up the side and thickset. One of the males in fancy dress was aggressive with the victim asking if he was gay and that he was dressed 'like a gay' and 'looked gay' and immediately started pushing the victim. The victim was then pushed to the floor and then got up, he was then hit to the head and fell to the floor again. The victim was then hit whilst he was on the floor. The other male in fancy dress also attacked the victim. During crime times stated an unknown male has approached the IP who was speaking on his phone - the suspect has then punched the IP in the face - causing a possible broken nose Amb 294 - this occurred near the toilet on Tombland. The suspect has then be	TESCO	45-49 Prince Of Wales Rd	27/12/2012
57527/12	Violence Against Person		Tombland		28/12/2012

6/36/13	Violence Against Person	Victim and her friend have been missing around inside the night club play fighting, but due to their drunken state have been bumped into members of the public. Victim as then been assaulted by unknown female possibly of a result of being bumped into by	CARTELS	London St	25/12/2012
5/76/12	Violence Against Person	During stated times there has been a verbal altercation in the street, fuelled by alcohol. The offender has then punched the victim causing a cut lip	ARNOLDS CHARTERED SURVEYORS	Prince of Wales Rd	25/12/2012
5/788/12	Violence Against Person	Between the crime times stated IP has been assaulted by an unknown male - IP has been struck on the left side of his head (near to his left ear), believes that he was head butted.	MASTER CHEF	PRINCE OF WALES RD	30/12/2012
2650/13	Violence Against Person	Between the crime times the info has been out in the city centre with friends. Whilst leaving FLUXE nightclub he has been approached by door staff and told that another member of door staff has wants to talk to him "out the back". After a short conversation he has been grabbed by door staff who were preventing him from leaving. They attempted to drag him back into the club and in this process the victim's coat, shirt and iPhone 4s has been damaged.	FLUXE	PRINCE OF WALES RD	13/01/2013
1957/13	Violence Against Person	On the date and times stated above victim states that he went into Grieco's Kebab shop to get some food, an unknown person who works inside the venue informed victim that the shop was closed. A verbal exchange took place between victim and the unknown restaurant worker and then the unknown worker pushed victim out of the shop. Victim then went back inside the shop and both victim and the unknown worker was throwing punches at each other, none of these punches landing on either party at this point.	GRECCO PIZZA & KEBAB HOUSE	PRINCE OF WALES RD	13/01/2013
2814/13	Violence Against Person	Domestic dispute between two partners following night out in Prince Of Wales Rd. Both parties had been drinking heavily and argue commenced when home	PRINCE OF WALES RD AND 66 ASHMAN BANK		19/01/2013
2899/13	Violence Against Person	Male alleges being assaulted by door security for no reason. Male states that he was trying to separate a fight inside but was wrongly ejected by staff. Victim states he was knocked unconscious by staff but has only minor marks / visible injuries	TAU NIGHTCLUB	PRINCE OF WALES RD	20/01/2013
2896/13	Violence Against Person	Male ejected from Mercy following disturbance inside. Others in group ejected continue the argument resulting in victim being assaulted by punching. Minor cuts and bloody nose suffered	MERCY NIGHTCLUB	90-96	20/01/2013
7776/13	Violence Against Person	Male stops police stating he has just been assaulted in Koblenz Ave by U/K male. ABB injuries due to reddening on face. Victim intoxicated so details not clear	Koblenz Ave		25/01/2013

[illegible]

Appendix 5 - Extract from National Crime Recording Standards explaining categorisation for recording of violent crime.



Appendix 6 – Persons arrested for Drunk and Disorderly Offences in Norwich NTE after 3am.

Custody Record Number	Arrest Date	Arrest Time	Place of Arrest
36W1/10/13	01/01/2013 00:00	03:07:00	Prince of Wales road, Norwich
36W1/6571/12	01/12/2012 00:00	03:09:00	Prince of Wales Road, Norwich
36W1/225/13	13/01/2013 00:00	03:10:00	O/s Mojo's, Prince of Wales road, Norwich
36W1/7094/12	30/12/2012 00:00	03:10:00	Hideout Bar, Queens Street, Norwich
36W1/121/13	06/01/2013 00:00	03:15:00	Outside Mercy, Prince of Wales Road, Norwich
36W1/5371/12	30/09/2012 00:00	03:15:00	O/side Mojoes Prince of Wales road
36W1/6097/12	07/11/2012 00:00	03:15:00	Cathedral Street, Norwich
36W1/866/13	17/02/2013 00:00	03:15:00	Tombland Norwich O/side Bar 11
36W1/4779/12	01/09/2012 00:00	03:20:00	Prince of Wales Road Norwich
36W1/4781/12	01/09/2012 00:00	03:20:00	Prince of Wales Road, Norwich
36W1/4782/12	01/09/2012 00:00	03:30:00	Prince of Wales Road Norwich
36W1/603/13	03/02/2013 00:00	03:30:00	Prince of Wales Road, Norwich
36W1/5195/12	22/09/2012 00:00	03:34:00	Prince of Wales Road, Norwich
36W1/5650/12	13/10/2012 00:00	03:40:00	Prince Of Wales Road Norwich
36W1/6308/12	18/11/2012 00:00	03:44:00	prince of Wales road, pulse nightclub
36W1/5505/12	07/10/2012 00:00	03:45:00	Outside Pulse Prince of Wales Road, Norwich
36W1/698/13	08/02/2013 00:00	03:45:00	Prince of Wales Road Norwich
36A1/288/13	17/02/2013 00:00	03:50:00	Outside dynamite on Prince Of Wales Road Norwich
36W1/4472/12	18/08/2012 00:00	03:50:00	Prince of Wales rd, Norwich
36W1/6498/12	28/11/2012 00:00	03:50:00	Queens street Norwich
36W1/6917/12	21/12/2012 00:00	03:50:00	Outside TAU Night club, Prince of Wales Rd, Norwich
36W1/4471/12	18/08/2012 00:00	03:55:00	Outside Prince of India, Prince of Wales Road, Norwich
36W1/5139/12	19/09/2012 00:00	03:55:00	Prince of Wales Road, Norwich
36W1/6804/12	15/12/2012 00:00	04:00:00	Prince of Wales Road, Norwich
36W1/911/13	21/02/2013 00:00	04:00:00	Magpie Road, Norwich
36W1/14/13	01/01/2013 00:00	04:03:00	QUEEN STREET, NORWICH
36W1/604/13	03/02/2013 00:00	04:03:00	Rose Lane, Norwich
36W1/316/13	19/01/2013 00:00	04:04:00	Prince of Wales Road
36W1/4949/12	08/09/2012 00:00	04:04:00	PRINCE OF WALES ROAD, NORWICH.
36W1/4215/12	05/08/2012 00:00	04:05:00	prince of Wales road, Norwich
36W1/4216/12	05/08/2012 00:00	04:05:00	Prince of Wales Road, Norwich
36W1/6978/12	23/12/2012 00:00	04:05:00	St. Vedast Street, Norwich
36W1/6281/12	17/11/2012 00:00	04:08:00	Prince of Wales Road
36W1/6335/12	20/11/2012 00:00	04:08:00	prince of Wales road
36W1/446/13	26/01/2013 00:00	04:10:00	St Faiths Lane, Norwich
36W1/5067/12	15/09/2012 00:00	04:10:00	Prince of Wales Road
36W1/4499/12	19/08/2012 00:00	04:11:00	O/S 100 NIGHTS PRINCE OF WALES ROAD
36W1/6573/12	01/12/2012 00:00	04:13:00	Prince of Wales Road, Norwich
36W1/227/13	13/01/2013 00:00	04:15:00	Prince of Wales Road, Norwich
36W1/17/13	01/01/2013 00:00	04:20:00	QUEEN STREET, NORWICH

PROTECT

36W1/6979/12	23/12/2012 00:00	04:20:00	Prince of Wales Rd
36W1/6726/12	09/12/2012 00:00	04:24:00	O/side Coral Bookmakers, Prince of Wales road, Norwich
36W1/5478/12	06/10/2012 00:00	04:25:00	Rose Lane, Norwich
36W1/5510/12	07/10/2012 00:00	04:30:00	Prince of Wales Road, Norwich
36W1/6312/12	18/11/2012 00:00	04:38:00	Rose Lane Norwich
36W1/7076/12	29/12/2012 00:00	04:40:00	Bank Plain, Norwich
36W1/6313/12	18/11/2012 00:00	04:44:00	prince of Wales, Norwich
36W1/7053/12	28/12/2012 00:00	04:45:00	Prince of Wales Road, Norwich
36W1/1014/13	26/02/2013 00:00	05:35:00	Chantry Road, Norwich
36W1/6283/12	17/11/2012 00:00	05:42:00	Rose Lane Norwich
36W1/5882/12	26/10/2012 00:00	07:20:00	Norwich Railway Station
36W1/6021/12	03/11/2012 00:00	07:25:00	Bank Plain, Norwich
36W1/5883/12	26/10/2012 00:00	07:30:00	lower Clarence road, Norwich

PROTECT

Appendix 7 – Section 27 Notices issued by Police in Norwich NTE

Date of issue	Day of Week	Time	Exclusion	Duration	Year of birth
29/04/2012	Sun	02:56	NORWICH CITY CENTRE AS DEFINED BY INNER RING ROAD	48	1986
03/05/2012	Thu	01:18	NORWICH CITY CENTRE AS DEFINED BY INNER RING ROAD	48	1988
03/05/2012	Thu	03:37	NORWICH CITY CENTRE AS DEFINED BY INNER RING ROAD	48	1991
04/05/2012	Fri	03:27	PRINCE OF WALES ROAD, ST VEDAS AND RIVERSIDE COMPLEX	48	1990
04/05/2012	Fri	01:37	CITY CENTRE AS DEFINED BY THE INNER RING ROAD	48	1989
04/05/2012	Fri	04:35	NORWICH CITY CENTRE AS DEFINED BY INNER RING ROAD	48	1992
04/05/2012	Fri	03:27	PRINCE OF WALES ROAD, ST VEDAS AND RIVERSIDE COMPLEX	48	1978
04/05/2012	Fri	23:37	NORWICH CITY CENTRE AS DEFINED BY INNER RING ROAD	48	1993
05/05/2012	Sat	00:55	NORWICH CITY CENTRE AS DEFINED BY INNER RING ROAD	48	1995
05/05/2012	Sat	01:36	NORWICH CITY CENTRE AS DEFINED BY INNER RING ROAD	48	1992
05/05/2012	Sat	01:45	NORWICH CITY CENTRE AS DEFINED BY INNER RING ROAD	48	1992
05/05/2012	Sat	03:55	NORWICH CITY CENTRE AS DEFINED BY INNER RING ROAD	48	1989
05/05/2012	Sat	03:59	NORWICH CITY CENTRE AS DEFINED BY INNER RING ROAD	48	1990
05/05/2012	Sat	00:15	CITY CENTRE AS DEFINED BY THE INNER RING ROAD	48	1990
05/05/2012	Sat	23:47	NORWICH CITY CENTRE AS DEFINED BY INNER RING ROAD	48	1983
06/05/2012	Sun	02:45	NORWICH CITY CENTRE AS DEFINED BY INNER RING ROAD	48	1993
06/05/2012	Sun	02:00	NORWICH CITY CENTRE AS DEFINED BY INNER RING ROAD	48	1992
06/05/2012	Sun	00:20	CITY CENTRE AS DEFINED BY THE INNER RING ROAD	48	1988
06/05/2012	Sun	02:55	NORWICH CITY CENTRE AS DEFINED BY INNER RING ROAD	48	1987
06/05/2012	Sun	04:50	NORWICH CITY CENTRE AS DEFINED BY INNER RING ROAD	48	1995
06/05/2012	Sun	02:00	NORWICH CITY CENTRE AS DEFINED BY INNER RING ROAD	48	1989
06/05/2012	Sun	01:20	NORWICH CITY CENTRE AS DEFINED BY INNER RING ROAD	48	1980
06/05/2012	Sun	02:45	NORWICH CITY CENTRE AS DEFINED BY INNER RING ROAD	48	1991
06/05/2012	Sun	03:33	NORWICH CITY CENTRE AS DEFINED BY INNER RING ROAD	48	1987
06/05/2012	Sun	02:50	NORWICH CITY CENTRE AS DEFINED BY INNER RING ROAD	48	1993
09/05/2012	Wed	19:05	NORWICH CITY CENTRE AS DEFINED BY INNER RING ROAD	48	
09/05/2012	Wed	22:46	CITY CENTRE AS DEFINED BY THE INNER RING ROAD	48	1982
12/05/2012	Sat	22:44	ANYWHERE WITHIN THE INNER RING ROAD, NORWICH	48	1989
12/05/2012	Sat	00:51	NORWICH CITY CENTRE AS DEFINED BY INNER RING ROAD	48	1991
12/05/2012	Sat	01:50	QUEEN'S STREET, BANK PLAIN, LONDON STREET, PRINCE OF WALES ROAD, TOMBLAND	48	1992
12/05/2012	Sat	02:05	NORWICH CITY CENTRE AS DEFINED BY INNER RING ROAD	48	1992
12/05/2012	Sat	16:52	NORWICH CITY CENTRE AS DEFINED BY INNER RING ROAD	24	1994
16/05/2012	Wed	15:38	NORWICH CITY CENTRE AS DEFINED BY INNER RING ROAD	48	1979
16/05/2012	Wed	15:37	NORWICH CITY CENTRE AS DEFINED BY INNER RING ROAD	48	1981
18/05/2012	Fri	20:20	NORWICH CITY CENTRE AS DEFINED BY INNER RING ROAD	48	1963
18/05/2012	Fri	12:20	NORWICH CITY CENTRE AS DEFINED BY INNER RING ROAD	48	1988

18/05/2012	Fri	21:14	NORWICH CITY CENTRE AS DEFINED BY INNER RING ROAD	48	1987
19/05/2012	Sat	01:55	NORWICH CITY CENTRE AS DEFINED BY INNER RING ROAD	48	1990

19/05/2012	Sat	00:05	PRINCE OF WALES ROAD, ROSE LANE, RIVERSIDE, TOMBLAND, QUEEN STREET, BANK PLAIN AND ALL ROADS LEADING OFF	48	1996
19/05/2012	Sat	00:15	PRINCE OF WALES ROAD, ROSE LANE, RIVERSIDE, TOMBLAND, QUEEN STREET, BANK PLAIN AND ALL ROADS LEADING OFF	48	1996
19/05/2012	Sat	01:37	PRINCE OF WALES ROAD, TOMBLAND, ST. VEDAST STREET	48	1979
20/05/2012	Sun	02:20	NORWICH CITY CENTRE AS DEFINED BY INNER RING ROAD	48	1993
20/05/2012	Sun	04:00	NORWICH CITY CENTRE AS DEFINED BY INNER RING ROAD	48	1990
20/05/2012	Sun	03:38	NORWICH CITY CENTRE AS DEFINED BY INNER RING ROAD	48	1990
20/05/2012	Sun	03:50	NORWICH CITY CENTRE AS DEFINED BY INNER RING ROAD	48	1991
20/05/2012	Sun	02:09	NORWICH CITY CENTRE AS DEFINED BY INNER RING ROAD	48	1993
20/05/2012	Sun	02:10	NORWICH CITY CENTRE AS DEFINED BY INNER RING ROAD	24	1974
22/05/2012	Tue	19:40	NORWICH CITY CENTRE AS DEFINED BY INNER RING ROAD INCLUDING TRAIN STATION AND CAR PARK, NORWICH CITY FOOTBALL CLUB	48	1979
22/05/2012	Tue	19:45	NORWICH CITY CENTRE AS DEFINED BY INNER RING ROAD INCLUDING TRAIN STATION AND CAR PARK, NORWICH CITY FOOTBALL CLUB	48	1989
22/05/2012	Tue	19:35	NORWICH CITY CENTRE AS DEFINED BY INNER RING ROAD EXCEPT TRAIN STATION TO GET TRAIN HOME	48	1975
22/05/2012	Tue	19:35	NORWICH CITY CENTRE AS DEFINED BY INNER RING ROAD	48	1960
22/05/2012	Tue	19:33	NORWICH CITY CENTRE AS DEFINED BY INNER RING ROAD	48	1964
23/05/2012	Wed	23:10	PARMENTERGATE COURT	12	1973
23/05/2012	Wed	01:10	THORPE ROAD	12	1981
25/05/2012	Fri	00:59	NORWICH CITY CENTRE AS DEFINED BY INNER RING ROAD	48	1970
26/05/2012	Sat	01:05	NORWICH CITY CENTRE AS DEFINED BY INNER RING ROAD	24	1978
26/05/2012	Sat	18:20	CHAPELFIELD CENTRE	12	1953
26/05/2012	Sat	00:40	NORWICH CITY CENTRE AS DEFINED BY INNER RING ROAD	48	1990
26/05/2012	Sat	13:07	NORWICH CITY CENTRE AS DEFINED BY INNER RING ROAD	12	1956
27/05/2012	Sun	18:56	NORWICH CITY CENTRE AS DEFINED BY OUTER RING ROAD	48	1985
27/05/2012	Sun	03:31	PRINCE OF WALES ROAD	24	1992
27/05/2012	Sun	02:05	NORWICH CITY CENTRE AS DEFINED BY INNER RING ROAD	24	1992
27/05/2012	Sun	03:30	NORWICH CITY CENTRE AS DEFINED BY INNER RING ROAD	48	1993
01/06/2012	Fri	00:35	NORWICH CITY CENTRE AS DEFINED BY INNER RING ROAD	48	1990
01/06/2012	Fri	00:50	NORWICH CITY CENTRE AS DEFINED BY INNER RING ROAD	48	1990
02/06/2012	Sat	03:12	NORWICH CITY CENTRE AS DEFINED BY INNER RING ROAD	48	1989
02/06/2012	Sat	02:45	NORWICH CITY CENTRE AS DEFINED BY INNER RING ROAD	48	1995
02/06/2012	Sat	00:50	NORWICH CITY CENTRE AS DEFINED BY INNER RING ROAD	48	1994
02/06/2012	Sat	00:30	NORWICH CITY CENTRE AS DEFINED BY INNER RING ROAD	48	1993
02/06/2012	Sat	01:20	NORWICH CITY CENTRE AS DEFINED BY INNER RING ROAD	48	1991
02/06/2012	Sat	02:43	NORWICH CITY CENTRE AS DEFINED BY INNER RING ROAD	48	1988
02/06/2012	Sat	02:45	NORWICH CITY CENTRE AS DEFINED BY INNER RING ROAD	48	1982
03/06/2012	Sun	00:30	NORWICH CITY CENTRE AS DEFINED BY INNER RING ROAD	48	1977
03/06/2012	Sun	00:40	NORWICH CITY CENTRE AS DEFINED BY INNER RING ROAD	48	
03/06/2012	Sun	03:50	NORWICH CITY CENTRE AS DEFINED BY INNER RING ROAD	48	1989
03/06/2012	Sun	04:20	NORWICH CITY CENTRE AS DEFINED BY INNER RING ROAD	48	1991
03/06/2012	Sun	03:27	NORWICH CITY CENTRE AS DEFINED BY INNER RING ROAD	48	1990
03/06/2012	Sun	03:30	NORWICH CITY CENTRE AS DEFINED BY INNER RING ROAD	48	1995
03/06/2012	Sun	02:20	NORWICH CITY CENTRE AS DEFINED BY INNER RING ROAD	48	1989
03/06/2012	Sun	00:30	NORWICH CITY CENTRE AS DEFINED BY INNER RING ROAD WITH EXCEPTION OF HOLIDAY INN	48	1977
03/06/2012	Sun	23:05	NORWICH CITY CENTRE AS DEFINED BY INNER RING ROAD	48	1992
04/06/2012	Mon	03:20	NORWICH CITY CENTRE AS DEFINED BY INNER RING ROAD	48	1987

PROTECT

04/06/2012	Mon	19:17	NORWICH CITY CENTRE AS DEFINED BY INNER RING ROAD	48	1972
04/06/2012	Mon	01:30	NORWICH CITY CENTRE AS DEFINED BY INNER RING ROAD	48	1985
05/06/2012	Tue	01:30	BISHOP BRIDGE HOUSE AND SURROUNDING AREA AS DEFINED BY GAS HILL AND RIVERSIDE ROAD (NOT INCLUDING TRAIN STATION)	12	1966
08/06/2012	Fri	23:40	NORWICH CITY CENTRE AS DEFINED BY INNER RING ROAD	24	1988
09/06/2012	Sat	02:34	NORWICH CITY CENTRE AS DEFINED BY INNER RING ROAD	48	1989
09/06/2012	Sat	03:10	NORWICH CITY CENTRE AS DEFINED BY INNER RING ROAD	48	1983
09/06/2012	Sat	02:22	NORWICH CITY CENTRE AS DEFINED BY INNER RING ROAD	48	1992
09/06/2012	Sat	11:47	NORWICH CITY CENTRE AS DEFINED BY INNER RING ROAD WITH EXCEPTION OF GLOBE PLACE (VAUXHALL STREET)	24	1956
09/06/2012	Sat	16:30	NORWICH CITY CENTRE AS DEFINED BY INNER RING ROAD	48	1942
10/06/2012	Sun	19:00	NORWICH CITY CENTRE AS DEFINED BY INNER RING ROAD	21	1942
10/06/2012	Sun	00:50	NORWICH CITY CENTRE AS DEFINED BY INNER RING ROAD	48	1973
13/06/2012	Wed	23:43	NORWICH CITY CENTRE AS DEFINED BY INNER RING ROAD	48	1978
14/06/2012	Thu	01:20	NORWICH CITY CENTRE AS DEFINED BY INNER RING ROAD	48	1988
15/06/2012	Fri	21:40	NORWICH CITY CENTRE AS DEFINED BY INNER RING ROAD INCLUDING RIVERSIDE COMPLEX	48	1994
15/06/2012	Fri	19:47	NORWICH CITY CENTRE AS DEFINED BY INNER RING ROAD	24	1992
15/06/2012	Fri	23:45	NORWICH CITY CENTRE AS DEFINED BY INNER RING ROAD	48	1987
16/06/2012	Sat	01:45	NORWICH CITY CENTRE AS DEFINED BY INNER RING ROAD	24	1994
16/06/2012	Sat	01:50	NORWICH CITY CENTRE AS DEFINED BY INNER RING ROAD	12	1993
16/06/2012	Sat	02:25	NORWICH CITY CENTRE AS DEFINED BY INNER RING ROAD	48	1993
16/06/2012	Sat	02:40	PRINCE OF WALES ROAD AND RIVERSIDE	24	1990
16/06/2012	Sat	02:42	NORWICH CITY CENTRE AS DEFINED BY INNER RING ROAD	48	1991
16/06/2012	Sat	02:43	NORWICH CITY CENTRE AS DEFINED BY INNER RING ROAD	24	1992
16/06/2012	Sat	12:25	NORWICH CITY CENTRE AS DEFINED BY INNER RING ROAD	48	1942
16/06/2012	Sat	02:27	PRINCE OF WALES ROAD	12	1994
16/06/2012	Sat	01:30	NORWICH CITY CENTRE AS DEFINED BY INNER RING ROAD	48	1990
17/06/2012	Sun	01:00	NORWICH CITY CENTRE AS DEFINED BY INNER RING ROAD	24	1991
17/06/2012	Sun	04:05	NORWICH CITY CENTRE AS DEFINED BY INNER RING ROAD	24	1962
19/06/2012	Tue	22:50	NORWICH CITY CENTRE AS DEFINED BY INNER RING ROAD	24	1979
19/06/2012	Tue	22:50	NORWICH CITY CENTRE AS DEFINED BY INNER RING ROAD	12	1977
19/06/2012	Tue	19:15	NORWICH CITY CENTRE AS DEFINED BY INNER RING ROAD	48	1983
19/06/2012	Tue	19:15	NORWICH CITY CENTRE AS DEFINED BY INNER RING ROAD	24	1988
19/06/2012	Tue	22:48	NORWICH CITY CENTRE AS DEFINED BY INNER RING ROAD	48	1984
20/06/2012	Wed	00:10	NORWICH CITY CENTRE AS DEFINED BY INNER RING ROAD	24	1997
22/06/2012	Fri	00:00	NORWICH CITY CENTRE AS DEFINED BY INNER RING ROAD (EXCLUDING HOME ADDRESS)	48	1990
23/06/2012	Sat	03:10	NORWICH CITY CENTRE AS DEFINED BY INNER RING ROAD	48	1992
23/06/2012	Sat	01:50	NORWICH CITY CENTRE AS DEFINED BY INNER RING ROAD	48	1993
23/06/2012	Sat	04:00	NORWICH CITY CENTRE AS DEFINED BY INNER RING ROAD	48	1983
23/06/2012	Sat	02:20	NORWICH CITY CENTRE AS DEFINED BY INNER RING ROAD	48	1974
23/06/2012	Sat	00:29	NORWICH CITY CENTRE AS DEFINED BY INNER RING ROAD	48	1990
24/06/2012	Sun	01:26	NORWICH CITY CENTRE AS DEFINED BY INNER RING ROAD	24	1987
24/06/2012	Sun	00:58	NORWICH CITY CENTRE AS DEFINED BY INNER RING ROAD	48	1979
24/06/2012	Sun	00:56	NORWICH CITY CENTRE AS DEFINED BY INNER RING ROAD	48	1990
24/06/2012	Sun	02:14	NORWICH CITY CENTRE AS DEFINED BY INNER RING ROAD	48	1987
24/06/2012	Sun	04:02	NORWICH CITY CENTRE AS DEFINED BY INNER RING ROAD	48	
24/06/2012	Sun	04:05	NORWICH CITY CENTRE AS DEFINED BY INNER RING ROAD	48	1992
24/06/2012	Sun	01:57	NORWICH CITY CENTRE AS DEFINED BY INNER RING ROAD	48	

PROTECT

24/06/2012	Sun	02:18	PRINCE OF WALES ROAD, TOMBLAND, RIVERSIDE COMPLEX	48	1968
25/06/2012	Mon	13:08	NORWICH CITY CENTRE AS DEFINED BY INNER RING ROAD	48	1989
29/06/2012	Fri	19:15	NORWICH CITY CENTRE AS DEFINED BY INNER RING ROAD	48	1988
30/06/2012	Sat	23:16	NORWICH CITY CENTRE AS DEFINED BY INNER RING ROAD	48	1989
30/06/2012	Sat	04:42	PRINCE OF WALES ROAD, RIVERSIDE	48	1996
30/06/2012	Sat	01:55	NORWICH CITY CENTRE AS DEFINED BY INNER RING ROAD	48	1972
30/06/2012	Sat	23:27	NORWICH CITY CENTRE AS DEFINED BY INNER RING ROAD	48	1988
30/06/2012	Sat	23:50	NORWICH CITY CENTRE AS DEFINED BY INNER RING ROAD	48	1985
01/07/2012	Sun	00:45	NORWICH CITY CENTRE AS DEFINED BY INNER RING ROAD	24	1991
01/07/2012	Sun	01:47	NORWICH CITY CENTRE AS DEFINED BY INNER RING ROAD	24	1974
01/07/2012	Sun	01:50	NORWICH CITY CENTRE AS DEFINED BY INNER RING ROAD	48	1989
01/07/2012	Sun	02:25	NORWICH CITY CENTRE AS DEFINED BY INNER RING ROAD	24	1989
01/07/2012	Sun	02:35	NORWICH CITY CENTRE AS DEFINED BY INNER RING ROAD	48	1990
01/07/2012	Sun	02:44	NORWICH CITY CENTRE AS DEFINED BY INNER RING ROAD	48	1961
01/07/2012	Sun	04:18	NORWICH CITY CENTRE AS DEFINED BY INNER RING ROAD	48	1993
01/07/2012	Sun	04:38	NORWICH CITY CENTRE AS DEFINED BY INNER RING ROAD EXCEPT FOR HOME ADDRESS	48	1971
01/07/2012	Sun	05:48	QUEENS ROAD AND NORWICH BUS STATION	24	1991
01/07/2012	Sun	01:03	NORWICH CITY CENTRE AS DEFINED BY INNER RING ROAD	48	1990
01/07/2012	Sun	01:10	NORWICH CITY CENTRE AS DEFINED BY INNER RING ROAD	24	1989
01/07/2012	Sun	01:37	NORWICH CITY CENTRE AS DEFINED BY INNER RING ROAD	24	1963
07/07/2012	Sat	00:06	NORWICH CITY CENTRE AS DEFINED BY INNER RING ROAD	48	1987
07/07/2012	Sat	01:30	NORWICH CITY CENTRE AS DEFINED BY INNER RING ROAD	12	1987
07/07/2012	Sat	03:50	NORWICH CITY CENTRE AS DEFINED BY INNER RING ROAD	24	1990
07/07/2012	Sat	03:55	PRINCE OF WALES ROAD	24	1976
07/07/2012	Sat	04:00	NORWICH CITY CENTRE AS DEFINED BY INNER RING ROAD	24	1986
07/07/2012	Sat	04:05	NORWICH CITY CENTRE AS DEFINED BY INNER RING ROAD	48	1991
07/07/2012	Sat	22:51	NORWICH CITY CENTRE AS DEFINED BY INNER RING ROAD	24	1984
07/07/2012	Sat	19:25	NORWICH CITY CENTRE AS DEFINED BY INNER RING ROAD	24	1992
07/07/2012	Sat	19:26	CHAPELFIELD GARDENS	24	1989
07/07/2012	Sat	19:30	CHAPELFIELD GARDENS AND ADJACENT ROADS AND CITY CENTRE	24	1983
07/07/2012	Sat	21:25	NORWICH CITY CENTRE AS DEFINED BY INNER RING ROAD	24	
07/07/2012	Sat	18:59	NORWICH CITY CENTRE AS DEFINED BY INNER RING ROAD	48	1956
08/07/2012	Sun	03:30	LEAVE AREA AS DEFINED BY THE INNER RING ROAD OF NORWICH	48	1993
08/07/2012	Sun	00:30	NORWICH CITY CENTRE AS DEFINED BY INNER RING ROAD	24	1991
10/07/2012	Tue	21:20	NORWICH CITY CENTRE AS DEFINED BY INNER RING ROAD	48	1989
10/07/2012	Tue	04:27	NORWICH CITY CENTRE AS DEFINED BY INNER RING ROAD	48	1985
12/07/2012	Thu	14:50	NORWICH CITY CENTRE AS DEFINED BY INNER RING ROAD	27	1972
14/07/2012	Sat	00:20	NORWICH CITY CENTRE AS DEFINED BY INNER RING ROAD	48	1992
14/07/2012	Sat	02:00	NORWICH CITY CENTRE AS DEFINED BY INNER RING ROAD	48	1989
14/07/2012	Sat	03:54	NORWICH CITY CENTRE AS DEFINED BY INNER RING ROAD	48	1992
14/07/2012	Sat	12:19	NORWICH CITY CENTRE AS DEFINED BY INNER RING ROAD	33	1987
15/07/2012	Sun	00:35	NORWICH CITY CENTRE AS DEFINED BY INNER RING ROAD	48	1984

PROTECT

15/07/2012	Sun	03:00	NORWICH CITY CENTRE AS DEFINED BY INNER RING ROAD	48	1988
15/07/2012	Sun	04:26	NORWICH CITY CENTRE AS DEFINED BY INNER RING ROAD	24	1983
15/07/2012	Sun	04:14	CHARLTON ROAD	24	1987
15/07/2012	Sun	00:01	NORWICH CITY CENTRE AS DEFINED BY INNER RING ROAD	24	1983
18/07/2012	Wed	21:57	NORWICH CITY CENTRE AS DEFINED BY INNER RING ROAD	48	1957
20/07/2012	Fri	23:50	NORWICH CITY CENTRE AS DEFINED BY INNER RING ROAD	48	1991
21/07/2012	Sat	03:57	NORWICH CITY CENTRE AS DEFINED BY INNER RING ROAD	24	1988
21/07/2012	Sat	02:20	NORWICH CITY CENTRE AS DEFINED BY INNER RING ROAD	24	1980
21/07/2012	Sat	09:55	NORWICH CITY CENTRE AS DEFINED BY INNER RING ROAD AND PRINCE OF WALES ROAD	24	1991
21/07/2012	Sat	02:15	NORWICH CITY CENTRE AS DEFINED BY INNER RING ROAD	24	1991
22/07/2012	Sun	03:24	NORWICH CITY CENTRE AS DEFINED BY INNER RING ROAD	24	1993
22/07/2012	Sun	03:53	NORWICH CITY CENTRE AS DEFINED BY INNER RING ROAD	24	1991
22/07/2012	Sun	01:35	NORWICH CITY CENTRE AS DEFINED BY INNER RING ROAD	24	1991
22/07/2012	Sun	02:40	NORWICH CITY CENTRE AS DEFINED BY INNER RING ROAD	24	1992
25/07/2012	Wed	03:00	NORWICH CITY CENTRE AS DEFINED BY INNER RING ROAD	24	1991
27/07/2012	Fri	02:04	NORWICH CITY CENTRE AS DEFINED BY INNER RING ROAD	24	1981
27/07/2012	Fri	20:16	NORWICH CITY CENTRE AS DEFINED BY INNER RING ROAD	24	1961
27/07/2012	Fri	04:20	PRINCE OF WALES ROAD AREA	24	1988
28/07/2012	Sat	23:35	NORWICH CITY CENTRE AS DEFINED BY INNER RING ROAD	24	1986
28/07/2012	Sat	01:05	NORWICH CITY CENTRE AS DEFINED BY INNER RING ROAD	48	1982
28/07/2012	Sat	03:17	NORWICH CITY CENTRE AS DEFINED BY INNER RING ROAD	48	1989
28/07/2012	Sat	23:55	NORWICH CITY CENTRE AS DEFINED BY INNER RING ROAD	24	1982
29/07/2012	Sun	01:08	NORWICH CITY CENTRE AS DEFINED BY INNER RING ROAD	24	1989
29/07/2012	Sun	02:15	NORWICH CITY CENTRE AS DEFINED BY INNER RING ROAD	24	1973
29/07/2012	Sun	02:30	NORWICH CITY CENTRE AS DEFINED BY INNER RING ROAD	24	1987
29/07/2012	Sun	03:13	NORWICH CITY CENTRE AS DEFINED BY INNER RING ROAD	24	1990
29/07/2012	Sun	00:45	NORWICH CITY CENTRE AS DEFINED BY INNER RING ROAD	24	1985
29/07/2012	Sun	02:06	NORWICH CITY CENTRE AS DEFINED BY INNER RING ROAD	48	1991
29/07/2012	Sun	02:07	NORWICH CITY CENTRE AS DEFINED BY INNER RING ROAD INCLUDING PRINCE OF WALES ROAD	48	1986
29/07/2012	Sun	02:30	NORWICH CITY CENTRE AS DEFINED BY INNER RING ROAD	24	1984
29/07/2012	Sun	11:27	NORWICH CITY CENTRE AS DEFINED BY INNER RING ROAD	48	1975
29/07/2012	Sun	23:12	NORWICH CITY CENTRE AS DEFINED BY INNER RING ROAD	48	1992
29/07/2012	Sun	23:15	NORWICH CITY CENTRE AS DEFINED BY INNER RING ROAD	24	1975
29/07/2012	Sun	03:15	NORWICH CITY CENTRE AS DEFINED BY INNER RING ROAD	24	1989
29/07/2012	Sun	02:55	NORWICH CITY CENTRE AS DEFINED BY INNER RING ROAD	24	1990
29/07/2012	Sun	00:21	NORWICH CITY CENTRE AS DEFINED BY INNER RING ROAD	48	1990
30/07/2012	Mon	17:05	NORWICH CITY CENTRE AS DEFINED BY INNER RING ROAD	48	1957
01/08/2012	Wed	14:00	NORWICH CITY CENTRE AS DEFINED BY INNER RING ROAD	48	1979
01/08/2012	Wed	00:30	TO LEAVE PRINCE OF WALES ROAD OR AREA DEFINED INCLUDING ESSENCE NIGHT CLUB	17	1985
02/08/2012	Thu	13:53	NORWICH CITY CENTRE AS DEFINED BY INNER RING ROAD	24	1995
03/08/2012	Fri	13:40	NORWICH CITY CENTRE AS DEFINED BY INNER RING ROAD	24	1971
04/08/2012	Sat	00:20	NORWICH CITY CENTRE AS DEFINED BY INNER RING ROAD	48	1994

PROTECT

04/08/2012	Sat	00:23	NORWICH CITY CENTRE AS DEFINED BY INNER RING ROAD	24	1994
04/08/2012	Sat	02:15	NORWICH CITY CENTRE AS DEFINED BY INNER RING ROAD	24	1987
04/08/2012	Sat	02:38	NORWICH CITY CENTRE AS DEFINED BY INNER RING ROAD	48	1986
04/08/2012	Sat	02:45	NORWICH CITY CENTRE AS DEFINED BY INNER RING ROAD	48	1992
04/08/2012	Sat	02:47	NORWICH CITY CENTRE AS DEFINED BY INNER RING ROAD	48	1993
04/08/2012	Sat	23:50	NORWICH CITY CENTRE AS DEFINED BY INNER RING ROAD	24	1993
04/08/2012	Sat	00:30	LEAVE CITY CENTRE	48	1993
05/08/2012	Sun	01:46	NORWICH CITY CENTRE AS DEFINED BY INNER RING ROAD	24	1991
05/08/2012	Sun	01:15	NORWICH CITY CENTRE AS DEFINED BY INNER RING ROAD - PUBLIC HOUSES	24	1987
05/08/2012	Sun	00:10	NORWICH CITY CENTRE AS DEFINED BY INNER RING ROAD	48	1991
05/08/2012	Sun	01:30	NORWICH CITY CENTRE AS DEFINED BY INNER RING ROAD	24	1995
06/08/2012	Mon	19:42	NORWICH CITY CENTRE AS DEFINED BY INNER RING ROAD	48	1957
07/08/2012	Tue	23:16	NORWICH CITY CENTRE AS DEFINED BY INNER RING ROAD - EXCLUDING THORPE ROAD AND YARMOUTH ROAD	48	1988
07/08/2012	Tue	22:37	NORWICH CITY CENTRE AS DEFINED BY INNER RING ROAD	24	1975
07/08/2012	Tue	12:27	NORWICH CITY CENTRE AS DEFINED BY INNER RING ROAD	48	1975
09/08/2012	Thu	20:24	RIVERSIDE ROAD, GAS HILL AND CITY CENTRE AS DEFINED BY THE INNER RING ROAD	48	1973
10/08/2012	Fri	22:00	NORWICH CITY CENTRE AS DEFINED BY INNER RING ROAD	48	1961
10/08/2012	Fri	22:03	NORWICH CITY CENTRE AS DEFINED BY INNER RING ROAD	48	1979
10/08/2012	Fri	23:45	NORWICH CITY CENTRE AS DEFINED BY INNER RING ROAD	48	1984
11/08/2012	Sat	01:35	NORWICH CITY CENTRE AS DEFINED BY INNER RING ROAD	48	1987
11/08/2012	Sat	23:16	NORWICH CITY CENTRE AS DEFINED BY INNER RING ROAD WITH THE EXCEPTION OF BER STREET AND HORNS LANE	48	1988
11/08/2012	Sat	23:28	NORWICH CITY CENTRE AS DEFINED BY INNER RING ROAD	24	1981
12/08/2012	Sun	02:45	NORWICH CITY CENTRE AS DEFINED BY INNER RING ROAD	24	1992
12/08/2012	Sun	00:54	NORWICH CITY CENTRE AS DEFINED BY INNER RING ROAD	48	1985
12/08/2012	Sun	01:20	NORWICH CITY CENTRE AS DEFINED BY INNER RING ROAD	48	1989
12/08/2012	Sun	02:30	EXCLUDED FROM ENTERING WITHIN THE INNER RING ROAD, NORWICH CITY CENTRE	12	1992
13/08/2012	Mon	13:20	NORWICH CITY CENTRE AS DEFINED BY INNER RING ROAD	24	1966
15/08/2012	Wed	01:34	NORWICH CITY CENTRE AS DEFINED BY INNER RING ROAD	48	1990
16/08/2012	Thu	17:10	GAS HILL, WILLIAM WHITE PLACE, WILLIAM KETT CLOSE	23	1993
16/08/2012	Thu	20:01	NORWICH CITY CENTRE AS DEFINED BY INNER RING ROAD	12	1980
16/08/2012	Thu	17:36	NORWICH CITY CENTRE AS DEFINED BY INNER RING ROAD	48	1970
16/08/2012	Thu	20:00	GUILDHALL, HAYMARKET, GENTLEMEN WALK, ST STEPHENS STREET, PRINCE OF WALES ROAD, AND AREA CONTAINED WITHIN	12	1974
16/08/2012	Thu	23:54	NORWICH CITY CENTRE AS DEFINED BY INNER RING ROAD	48	1991
17/08/2012	Fri	16:40	NORWICH CITY CENTRE AS DEFINED BY INNER RING ROAD	48	1972
18/08/2012	Sat	02:10	PRINCE OF WALES ROAD AREA	24	1984
18/08/2012	Sat	23:43	NORWICH CITY CENTRE AS DEFINED BY INNER RING ROAD	48	1994
19/08/2012	Sun	00:10	NORWICH CITY CENTRE AS DEFINED BY INNER RING ROAD	48	1990
19/08/2012	Sun	01:39	NORWICH CITY CENTRE AS DEFINED BY INNER RING ROAD	48	1990

PROTECT

19/08/2012	Sun	01:47	NORWICH CITY CENTRE AS DEFINED BY INNER RING ROAD	48	1988
19/08/2012	Sun	02:54	NORWICH CITY CENTRE AS DEFINED BY INNER RING ROAD	48	1980
19/08/2012	Sun	01:09	NORWICH CITY CENTRE AS DEFINED BY INNER RING ROAD	48	
19/08/2012	Sun	01:17	NORWICH CITY CENTRE AS DEFINED BY INNER RING ROAD	48	
24/08/2012	Fri	23:20	PRINCE OF WALES ROAD	48	1989
24/08/2012	Fri	01:40	NORWICH CITY CENTRE AS DEFINED BY INNER RING ROAD	48	1995
25/08/2012	Sat	00:30	NORWICH CITY CENTRE AS DEFINED BY INNER RING ROAD		1988
25/08/2012	Sat	02:32	NORWICH CITY CENTRE AS DEFINED BY INNER RING ROAD	48	1987
25/08/2012	Sat	02:24	NORWICH CITY CENTRE AS DEFINED BY INNER RING ROAD	48	1994
25/08/2012	Sat	02:30	NORWICH CITY CENTRE AS DEFINED BY INNER RING ROAD	24	1992
25/08/2012	Sat	04:25	NORWICH CITY CENTRE AS DEFINED BY INNER RING ROAD	48	1986
25/08/2012	Sat	00:20	NORWICH CITY CENTRE AS DEFINED BY INNER RING ROAD	48	1993
25/08/2012	Sat	21:08	NORWICH CITY CENTRE AS DEFINED BY INNER RING ROAD	48	1990
25/08/2012	Sat	21:05	NORWICH CITY CENTRE AS DEFINED BY INNER RING ROAD	48	1989
25/08/2012	Sat	14:27	PRINCE OF WALES ROAD, AND NORWICH CITY FOOTBALL GROUND AND ITS PUBLIC AREAS IMMEDIATELY OUTSIDE AREA, YOU ARE NOT ALLOWED IN THE RIVERSIDE COMPLEX, YOU ARE ALLOWED TO THE TRAIN STATION	24	1988
26/08/2012	Sun	15:27	NORWICH CITY CENTRE AS DEFINED BY INNER RING ROAD -EXCEPT UNTHANK ROAD	48	1979
26/08/2012	Sun	15:55	NORWICH CITY CENTRE AS DEFINED BY INNER RING ROAD	48	1965
26/08/2012	Sun	02:10	NORWICH CITY CENTRE AS DEFINED BY INNER RING ROAD	48	1983
26/08/2012	Sun	23:19	NORWICH CITY CENTRE AS DEFINED BY INNER RING ROAD	48	1986
27/08/2012	Mon	02:25	NORWICH CITY CENTRE AS DEFINED BY INNER RING ROAD	48	
27/08/2012	Mon	00:49	NORWICH CITY CENTRE AS DEFINED BY INNER RING ROAD	48	1986
28/08/2012	Tue	18:20	PRINCE OF WALES ROAD, LONDON STREET, ROSE LANE, RIVERSIDE AREA, ST. BENEDICTS STREET	24	1970
28/08/2012	Tue	03:50	PRINCE OF WALES ROAD, TOMBLAND AND AREA WITHIN THE NORWICH INNER RING ROAD	48	1993
29/08/2012	Wed	01:55	NORWICH CITY CENTRE AS DEFINED BY INNER RING ROAD	48	1989
29/08/2012	Wed	01:49	TO LEAVE PRINCE OF WALES ROAD OR AREA DEFINED INCLUDING ESSENCE NIGHT CLUB	24	1992
31/08/2012	Fri	04:35	NORWICH CITY CENTRE AS DEFINED BY INNER RING ROAD	48	1987
31/08/2012	Fri	04:45	LEAVE NORWICH CITY CENTRE AS DEFINED BY THE INNER RING ROAD AND OBTAIN TAXI IN NEXT 15 MIN	48	1992
31/08/2012	Fri	04:40	NORWICH CITY CENTRE AS DEFINED BY INNER RING ROAD	48	1988
31/08/2012	Fri	04:10	NORWICH CITY CENTRE AS DEFINED BY INNER RING ROAD	48	1992
31/08/2012	Fri	04:50	NORWICH CITY CENTRE AS DEFINED BY INNER RING ROAD	48	1992
31/08/2012	Fri	02:56	NORWICH CITY CENTRE AS DEFINED BY INNER RING ROAD	48	1992
31/08/2012	Fri	02:30	NORWICH CITY CENTRE AS DEFINED BY INNER RING ROAD	48	1991
31/08/2012	Fri	22:45	BANNED FROM CITY CENTRE INNER RING ROAD	48	1987
31/08/2012	Fri	04:35	NORWICH CITY CENTRE AS DEFINED BY INNER RING ROAD	48	1992
31/08/2012	Fri	04:45	NORWICH CITY CENTRE AS DEFINED BY INNER RING ROAD	48	1992
31/08/2012	Fri	04:35	NORWICH CITY CENTRE AS DEFINED BY INNER RING ROAD	48	1991
31/08/2012	Fri	04:50	NORWICH CITY CENTRE AS DEFINED BY INNER RING ROAD	48	1992
01/09/2012	Sat	01:55	NORWICH CITY CENTRE AS DEFINED BY INNER RING ROAD	24	1994

PROTECT

PROTECT

01/09/2012	Sat	23:15	NOT TO COME WITHIN THE CONFINES OF THE INNER RING ROAD	24	1980
01/09/2012	Sat	02:28	NORWICH AS DEFINED BY THE INNER RING ROAD	48	1991
01/09/2012	Sat	04:30	NORWICH CITY CENTRE AS DEFINED BY INNER RING ROAD	48	1990
01/09/2012	Sat	00:32	NORWICH CITY CENTRE AS DEFINED BY INNER RING ROAD	48	1988
01/09/2012	Sat	02:15	PRINCE OF WALES ROAD, QUEENS STREET, TOMBLAND	48	1977
01/09/2012	Sat	03:00	NORWICH CITY CENTRE AS DEFINED BY INNER RING ROAD	48	1982
01/09/2012	Sat	02:10	NORWICH CITY CENTRE AS DEFINED BY INNER RING ROAD	48	1983
02/09/2012	Sun	04:40	NORWICH CITY CENTRE AS DEFINED BY INNER RING ROAD	24	1992
02/09/2012	Sun	04:10	NORWICH CITY CENTRE AS DEFINED BY INNER RING ROAD	48	1993
02/09/2012	Sun	04:41	NORWICH CITY CENTRE AS DEFINED BY INNER RING ROAD	48	1992
02/09/2012	Sun	23:00	NORWICH CITY CENTRE AS DEFINED BY INNER RING ROAD	48	1988
02/09/2012	Sun	04:41	NORWICH CITY CENTRE AS DEFINED BY INNER RING ROAD	48	1993
02/09/2012	Sun	04:45	NORWICH CITY CENTRE AS DEFINED BY INNER RING ROAD	48	1989
02/09/2012	Sun	01:10	INNER RING NORWICH, TO LEAVE MAGDALEN STREET	48	1984
02/09/2012	Sun	02:10	INNER RING ROAD NORWICH	48	1989
02/09/2012	Sun	02:25	PRINCE OF WALES ROAD AND ANY LICENCED PREMISES WITHIN THE INNER RING ROAD	48	1990
02/09/2012	Sun	02:45	NORWICH CITY CENTRE	48	1989
02/09/2012	Sun	03:19	NORWICH CITY CENTRE AS DEFINED BY INNER RING ROAD	48	1989
03/09/2012	Mon	02:30	NORWICH CITY CENTRE AS DEFINED BY INNER RING ROAD	24	1987
03/09/2012	Mon	04:40	NORWICH CITY CENTRE AS DEFINED BY INNER RING ROAD	24	1992
06/09/2012	Thu	17:00	NORWICH CITY CENTRE AS DEFINED BY INNER RING ROAD	48	1979
07/09/2012	Fri	22:59	NORWICH CITY CENTRE AS DEFINED BY INNER RING ROAD	48	1971
07/09/2012	Fri	13:50	NORWICH CITY CENTRE AS DEFINED BY INNER RING ROAD	48	1967
08/09/2012	Sat	14:20	CITY CENTRE AS DEFINED BY THE INNER RING ROAD	48	1985
08/09/2012	Sat	02:12	NORWICH CITY CENTRE AS DEFINED BY INNER RING ROAD	48	1985
08/09/2012	Sat	02:15	NOT TO ENTER NORWICH CITY CENTRE AS DEFINED BY THE INNER RING ROAD	6	1984
08/09/2012	Sat	02:40	NOT TO ENTER NORWICH CITY CENTRE AS DEFINED BY THE INNER RING ROAD	48	1984
08/09/2012	Sat	00:02	NORWICH CITY CENTRE AS DEFINED BY INNER RING ROAD	48	1987
08/09/2012	Sat	03:00	NORWICH CITY CENTRE AS DEFINED BY INNER RING ROAD	48	1992
08/09/2012	Sat	03:35	NORWICH CITY CENTRE AS DEFINED BY INNER RING ROAD	48	1990
08/09/2012	Sat	19:15	THE CITY CENTRE AS DEFINED BY INNER RING ROAD	24	1981
09/09/2012	Sun	01:00	NORWICH CITY CENTRE AS DEFINED BY INNER RING ROAD	24	1988
09/09/2012	Sun	02:57	NORWICH CITY CENTRE AS DEFINED BY INNER RING ROAD	48	1992
09/09/2012	Sun	01:20	CITY CENTRE AS DEFINED BY INNER RING ROAD	48	1990
09/09/2012	Sun	01:50	NORWICH CITY CENTRE AS DEFINED BY INNER RING ROAD	48	1991
09/09/2012	Sun	03:08	NORWICH CITY CENTRE AS DEFINED BY INNER RING ROAD	48	1990
09/09/2012	Sun	04:15	NORWICH CITY CENTRE AS DEFINED BY INNER RING ROAD	48	1981
09/09/2012	Sun	01:48	NORWICH CITY CENTRE AS DEFINED BY INNER RING ROAD	48	1989
10/09/2012	Mon	22:11	NORWICH CITY CENTRE AS DEFINED BY INNER RING ROAD	24	1990
10/09/2012	Mon	22:10	NORWICH CITY CENTRE AS DEFINED BY INNER RING ROAD EXCEPT TO ATTEND THE JOB CENTRE	48	1982
14/09/2012	Fri	03:14	NORWICH CITY CENTRE AS DEFINED BY INNER RING ROAD	24	1991
14/09/2012	Fri	04:55	NORWICH CITY CENTRE AS DEFINED BY INNER RING ROAD	48	1993
14/09/2012	Fri	22:35	NORWICH CITY CENTRE AS DEFINED BY INNER RING ROAD	48	1966
14/09/2012	Fri	23:29	QUEENS STREET, TOMBLAND, PRINCE OF WALES ROAD, RIVERSIDE, NORWICH	48	1977
15/09/2012	Sat	01:34	NORWICH CITY CENTRE AS DEFINED BY INNER RING ROAD - EXCLUDING BUS STATION AND TRAVEL LODGE	48	1991
15/09/2012	Sat	03:30	NORWICH CITY CENTRE AS DEFINED BY INNER RING ROAD	48	1990

PROTECT

15/09/2012	Sat	03:30	NORWICH CITY CENTRE AS DEFINED BY INNER RING ROAD	48	1992
15/09/2012	Sat	13:40	NORWICH CITY CENTRE AS DEFINED BY INNER RING ROAD	48	1957
17/09/2012	Mon	19:45	NORWICH CITY CENTRE AS DEFINED BY INNER RING ROAD	12	1971
21/09/2012	Fri	12:41	NORWICH CITY CENTRE AS DEFINED BY INNER RING ROAD	48	1992
21/09/2012	Fri	23:04	NORWICH CITY CENTRE AS DEFINED BY INNER RING ROAD	48	1987
22/09/2012	Sat	00:45	NORWICH CITY CENTRE AS DEFINED BY INNER RING ROAD	48	1988
22/09/2012	Sat	01:50	NORWICH CITY CENTRE AS DEFINED BY INNER RING ROAD	48	1984
22/09/2012	Sat	03:47	NORWICH CITY CENTRE AS DEFINED BY INNER RING ROAD	48	1987
22/09/2012	Sat	23:30	NORWICH CITY CENTRE AS DEFINED BY INNER RING ROAD	48	1955
23/09/2012	Sun	04:05	NORWICH CITY CENTRE AS DEFINED BY INNER RING ROAD	48	1988
23/09/2012	Sun	04:45	NORWICH CITY CENTRE AS DEFINED BY INNER RING ROAD	48	1971
28/09/2012	Fri	22:48	NORWICH CITY CENTRE AS DEFINED BY INNER RING ROAD	48	1977
29/09/2012	Sat	01:45	NORWICH CITY CENTRE AS DEFINED BY INNER RING ROAD	48	1987
29/09/2012	Sat	03:20	NORWICH CITY CENTRE AS DEFINED BY INNER RING ROAD	48	
29/09/2012	Sat	04:38	NORWICH CITY CENTRE AS DEFINED BY INNER RING ROAD	48	1978
29/09/2012	Sat	22:50	NORWICH CITY CENTRE AS DEFINED BY INNER RING ROAD	48	1963
29/09/2012	Sat	23:05	NORWICH CITY CENTRE AS DEFINED BY INNER RING ROAD	24	1979
29/09/2012	Sat	23:25	PRINCE OF WALES ROAD	24	1985
29/09/2012	Sat	14:48	NORWICH CITY CENTRE AS DEFINED BY INNER RING ROAD	24	1995
29/09/2012	Sat	23:23	NORWICH CITY CENTRE AS DEFINED BY INNER RING ROAD	24	1986
29/09/2012	Sat	01:10	NORWICH CITY CENTRE AS DEFINED BY INNER RING ROAD	48	1984
30/09/2012	Sun	00:45	NORWICH CITY CENTRE AS DEFINED BY INNER RING ROAD	24	1988
30/09/2012	Sun	02:48	NORWICH CITY CENTRE AS DEFINED BY INNER RING ROAD	24	1990
30/09/2012	Sun	05:04	NORWICH CITY CENTRE AS DEFINED BY INNER RING ROAD	24	1991
02/10/2012	Tue	17:10	INNER CITY AS DEFINED BY INNER RING ROAD	24	1990
04/10/2012	Thu	12:01	NORWICH CITY CENTRE AS DEFINED BY INNER RING ROAD	8	1951
05/10/2012	Fri	00:17	NORWICH CITY CENTRE AS DEFINED BY INNER RING ROAD	24	1990
05/10/2012	Fri	02:20	NORWICH CITY CENTRE AS DEFINED BY INNER RING ROAD	24	1994
05/10/2012	Fri	01:00	NORWICH CITY CENTRE AS DEFINED BY INNER RING ROAD	24	1992
05/10/2012	Fri	20:09	NORWICH CITY CENTRE AS DEFINED BY INNER RING ROAD	48	1976
05/10/2012	Fri	00:17	NORWICH CITY CENTRE AS DEFINED BY INNER RING ROAD EXCEPT FOR ENTRY/EXIT ROUTES	48	1990
05/10/2012	Fri	02:20	NORWICH CITY CENTRE AS DEFINED BY INNER RING ROAD	24	1994
05/10/2012	Fri	01:00		24	1992
06/10/2012	Sat	03:05	NORWICH CITY CENTRE AS DEFINED BY INNER RING ROAD EXCEPT THEATRE STREET AND ST. STEPHENS STREET, AND RAMPANT HOUSE STREET	48	1990
07/10/2012	Sun	04:05	NORWICH CITY CENTRE AS DINED BY INNER RING ROAD	24	1992
07/10/2012	Sun	04:13	NORWICH CITY CENTRE AS DINED BY INNER RING ROAD	24	1989
07/10/2012	Sun	04:10	NORWICH CITY CENTRE AS DEFINED BY INNER RING ROAD	24	1984
07/10/2012	Sun	01:51	NORWICH CITY CENTRE AS DINED BY INNER RING ROAD	24	1982
07/10/2012	Sun	00:55	NORWICH CITY CENTRE AS DINED BY INNER RING ROAD	24	1978
09/10/2012	Tue	00:42	NORWICH INNER RING ROAD(TO REMAIN OUTSIDE)	48	1970
09/10/2012	Tue	11:40	NORWICH AS DEFINED BY THE INNER RING ROAD	24	1979
09/10/2012	Tue	11:35	NORWICH AS DEFINED BY THE INNER RING ROAD	24	1959
11/10/2012	Thu	22:55	NORWICH CITY CENTRE AS DEFINED BY INNER RING ROAD	48	1979
12/10/2012	Fri	08:40	NORWICH CITY CENTRE AS DEFINED BY INNER RING ROAD	24	1989
12/10/2012	Fri	08:40	NORWICH CITY CENTRE AS DEFINED BY INNER RING ROAD	24	1989
12/10/2012	Fri	19:52	NORWICH CITY CENTRE AS DEFINED BY INNER RING ROAD	48	1984
12/10/2012	Fri	23:20	TO LEAVE THE CITY CENTRE AND NOT RETURN AS DEFINED BY INNER RING ROAD	48	1989
12/10/2012	Fri	23:55	CITY CENTRE AS DEFINED BY INNER RING ROAD	48	1973
12/10/2012	Fri	23:30	NORWICH CITY CENTRE	48	1988
13/10/2012	Sat	12:04	GAS HILL AND ANY PART OF THE BUILDINGS OR PATHS PART OF OR ADJOINING BISHOPBRIDGE HOUSE	48	1986
13/10/2012	Sat	02:30	CITY CENTRE AS DEFINED BY INNER RING ROAD	48	1973

PROTECT

13/10/2012	Sat	02:15	PRINCE OF WALES ROAD AS DEFINED BY INNER RING ROAD	48	1986
13/10/2012	Sat	01:35	TO LEAVE PRINCE OF WALES ROAD AS DEFINED BY THE INNER RING ROAD OF NORWICH	48	1991
13/10/2012	Sat	00:25	NORWICH CITY CENTRE AS DEFINED BY INNER RING ROAD	48	1993
13/10/2012	Sat	01:20	NOT TO ENTER CITY CENTRE AS DEFINED BY INNER RING ROAD	48	1981
13/10/2012	Sat	02:21	PRINCE OF WALES ROAD NORWICH CITY CENTRE AS DEFINED BY INNER RING ROAD	48	1985
13/10/2012	Sat	01:42	NORWICH CITY CENTRE AS DEFINED BY INNER RING ROAD	48	1988
13/10/2012	Sat	01:02	CITY CENTRE AS DEFINED BY INNER RING ROAD	48	1973
13/10/2012	Sat	02:45	CITY CENTRE AS DEFINED BY INNER RING ROAD	48	1993
14/10/2012	Sun	03:05	NORWICH CITY CENTRE AS DEFINED BY INNER RING ROAD	48	1994
14/10/2012	Sun	04:00	NORWICH INSIDE THE INNER RING ROAD WITHIN THE CITY AREA	24	1991
14/10/2012	Sun	02:25	WITHIN THE INNER RING ROAD	24	1981
14/10/2012	Sun	00:05	RIVERSIDE/PRINCE OF WALES ROAD, NORWICH, CITY CENTRE	24	1980
14/10/2012	Sun	02:30	NORWICH CITY CENTRE AS DEFINED BY INNER RING ROAD	24	1992
14/10/2012	Sun	00:45	NORWICH CITY CENTRE AS DEFINED BY INNER RING ROAD	24	1993
16/10/2012	Tue	19:13	NORWICH CITY CENTRE AS DEFINED BY INNER RING ROAD	24	1971
16/10/2012	Tue	02:40	NORWICH CITY CENTRE AS DEFINED BY INNER RING ROAD	48	1992
20/10/2012	Sat	17:30	NORWICH CITY CENTRE AS DEFINED BY INNER RING ROAD	24	1995
26/10/2012	Fri	14:00	NORWICH CITY CENTRE AS DEFINED BY INNER RING ROAD	48	1970
27/10/2012	Sat	23:27	NORWICH CITY CENTRE AS DEFINED BY INNER RING ROAD	24	1989

Breakdown: -

317 incidents prior to 0300hrs

87 incidents after 0300hrs

Out of the 404 total incidents breakdown of days of the week are as follows: -

14 incidents on Monday
 24 incidents on Tuesday
 15 incidents on Wednesday
 14 incidents on Thursday
 63 incidents on Friday
 143 incidents on Saturday
 131 incidents on Sunday

WITNESS STATEMENT

Criminal Procedure Rules, r 27. 2; Criminal Justice Act 1967, s. 9; Magistrates' Courts Act 1980, s.5B

URN: 36 / /

Statement of: ANTHONY ALBERT ABIGAIL

Age if under 18: over 18 (if over 18 insert 'over 18') Occupation: Police Officer

This statement (consisting of 3 page(s) each signed by me) is true to the best of my knowledge and belief and I make it knowing that, if it is tendered in evidence, I shall be liable to prosecution if I have wilfully stated anything in it, which I know to be false, or do not believe to be true.

Signature: Date 12/03/2013

Tick if witness evidence is visually recorded ☐ (supply witness details on rear)

I am Temporary Inspector 3124 ABIGAIL of Norfolk Constabulary, currently stationed at Bethel Street Police Station, Norwich. I have been a police officer for nearly seventeen years, working as an acting sergeant for a period during my three years in the Tactical Unit at Bethel Street Police Station; working as a temporary sergeant for a period during my three years at Bethel Street Police Station Criminal Investigation Department; working as a temporary uniformed sergeant on Bethel Street Police Station Safer Neighbourhood Team; before working as a uniformed sergeant at Mile Cross Safer Neighbourhood Team, Thorpe Hamlet Safer Neighbourhood Team, Bethel Street Safer Neighbourhood Team, Bethel Street Response, Bethel Street Crime and Community Sergeant; then my present role as uniformed Temporary Inspector again at Bethel Street Police Station. On many occasions in the past five years I have performed public order duties in Norwich as a sergeant and have now also performed public order duties as an inspector where I have briefed all officers and extensively patrolled the night time economy on foot and been involved in incidents, then collated all the night time economy information in relation to arrests, incidents, licensed premises visits, etc. I would consider myself to be a very experienced officer in relation to the public order situation in Norwich.

I have been asked to give my view on some matters in relation to the policing of Norwich's night time economy. Section 27 notices of the Violent Crime Reduction Act 2006 are issued when a police officer considers that the presence of an individual in a locality is likely to

Signature: Signature witnessed by:



Continuation Statement Of: Page of

cause or to contribute to the occurrence of alcohol-related crime or disorder in that locality or to cause or contribute to a repetition or continuance there of such crime and disorder and that the giving of the direction under this section to that individual is necessary for the purpose or removing or reducing the likelihood of there being such crime or disorder in that locality during the period for which the direction has effect. The issuing officer instructs the person to leave Norwich City Centre as defined by the inner ring road for a maximum period of 48 hours. The notices are in paper form and a copy of the form is given to the person, their name is added to a police computer listing of section 27 notices given out that evening and they are requested to look in the direction of a CCTV camera so that we have a visual recording of them at that scene at that time. These are given out throughout the night but are a very useful tool when given out earlier in the evening as they prevent incidents of further disorder from that individual. Section 27 notices are given out throughout the night time economy area, including Tombland, London Street, Queen Street, and roads off Prince of Wales Road, such as Cathedral Street. These areas overlap with business areas, for instance, London Street has a broad mix of shops along its length but has a licensed premises at its junction with Bank Plain, and also residential areas such as Recorder Road off Prince of Wales Road.

In relation to arrests for the offence of being drunk and disorderly and also breaching a section 27 direction to leave notice, these most frequently occur in the Prince of Wales Road area. The general pattern is for people to consume alcohol in various city centre locations and then converge on Prince of Wales Road in order to purchase food at the fast food restaurants and also to eventually get hold of a taxi in order to go home. It is not uncommon for a person to be given a section 27 notice in Prince of Wales Road and be given a suitable window of time to get a taxi from Tombland, for instance, and then a considerable while later be picked up on the CCTV cameras by an operator who had recorded the individual an hour or so earlier as he or she now headed back down Prince of Wales Road in order to go to a fast food restaurant and commit a flagrant breach of what had been imposed earlier and then been arrested. A decent proportion of people arrested for being drunk and disorderly and the section 27 breaches from Prince of Wales Road had been drinking elsewhere.

Signature:
2004/05(1)

Signature witnessed by:

Continuation Statement Of: Page of

From my many experiences in Norwich City Centre I can say that during the late evening, night and up until as late as 0630 in the morning the main proportion of Norwich City Centre crime occurs because of drunkenness. In my position as inspector of the Norwich night time economy on the nights of Friday March 1st and Saturday March 2nd 2013 the majority of arrests in Norwich City Centre were alcohol-related. Police resources are constantly stretched to go from one alcohol-related fight to another alcohol-related fight and break up disorder and make arrests. The drunkenness results in the high level of recorded violent crime in the Prince of Wales Road and surrounding area and people's behaviour worsens and the level of assault increases with their uninhibited conscience of the harm that they are causing towards the person they are assaulting. Inevitably when sober and being interviewed some considerable time later by a police officer their recollection of events has been clouded over by the considerable amount of alcohol that they had consumed prior to their offending.

Signature:
2004/05(1)

Signature witnessed by:

Witness contact details

Home address: Postcode:

Home telephone No: 01603 262508 Work telephone No: 01603 276511

Mobile/Pager No: 07870916966 E-mail address:

Preferred means of contact:

Male ☒ Female ☐ Date and place of birth: 02/12/61, Norwich

Former name: Height: Ethnicity Code: 1 - White European

Dates of witness non-availability:

Witness care

- a) Is the witness willing and likely to attend court? Yes ☒ No ☐. If 'No', include reason(s) on form MG6. What can be done to ensure attendance?
- b) Does the witness require 'special measures' as a vulnerable or intimidated witness? Yes ☐ No ☒. If 'Yes' submit MG2 with file.
- c) Does the witness have any specific care needs? Yes ☐ No ☒. If 'Yes' what are they? (Healthcare, childcare, transport, disability, language difficulties, visually impaired, restricted mobility or other concerns?)

IF CHILD WITNESS:

PARENT / GUARDIAN name:

Address (if different to the address of the child) Tel:

Dates of PARENT / GUARDIAN non-availability:

Does the witness's PARENT / GUARDIAN have any specific care needs? Yes ☐ No ☐. If 'Yes' what are they? (Healthcare, childcare, transport, disability, language difficulties, visually impaired, restricted mobility or other concerns?)**Witness Consent (for witness completion)**

- a) The criminal justice process and Victim Personal Statement scheme (victims only) has been explained to me: Yes ☒ No ☐
- b) I have been given the leaflet 'Giving a witness statement to the police - what happens next?' Yes ☐ No ☒
- c) I consent to police having access to my medical record(s) in relation to this matter: Yes ☐ No ☐ N/A ☒
- d) I consent to my medical record in relation to this matter being disclosed to the defence: Yes ☐ No ☐ N/A ☒
- e) I consent to the statement being disclosed for the purposes of civil proceedings e.g. child care proceedings (if applicable): Yes ☐ No ☐ N/A ☒
- f) The information recorded above will be disclosed to the Witness Service so that they can offer help and support, unless you ask them not to. Tick this box to decline their services: ☐

Signature of witness: _____ Statement taken by:

Station: Time and place statement taken: 2200-2340, BPS



Appendix 9 – Map of recommended EMRO areas

