

Norwich City Council

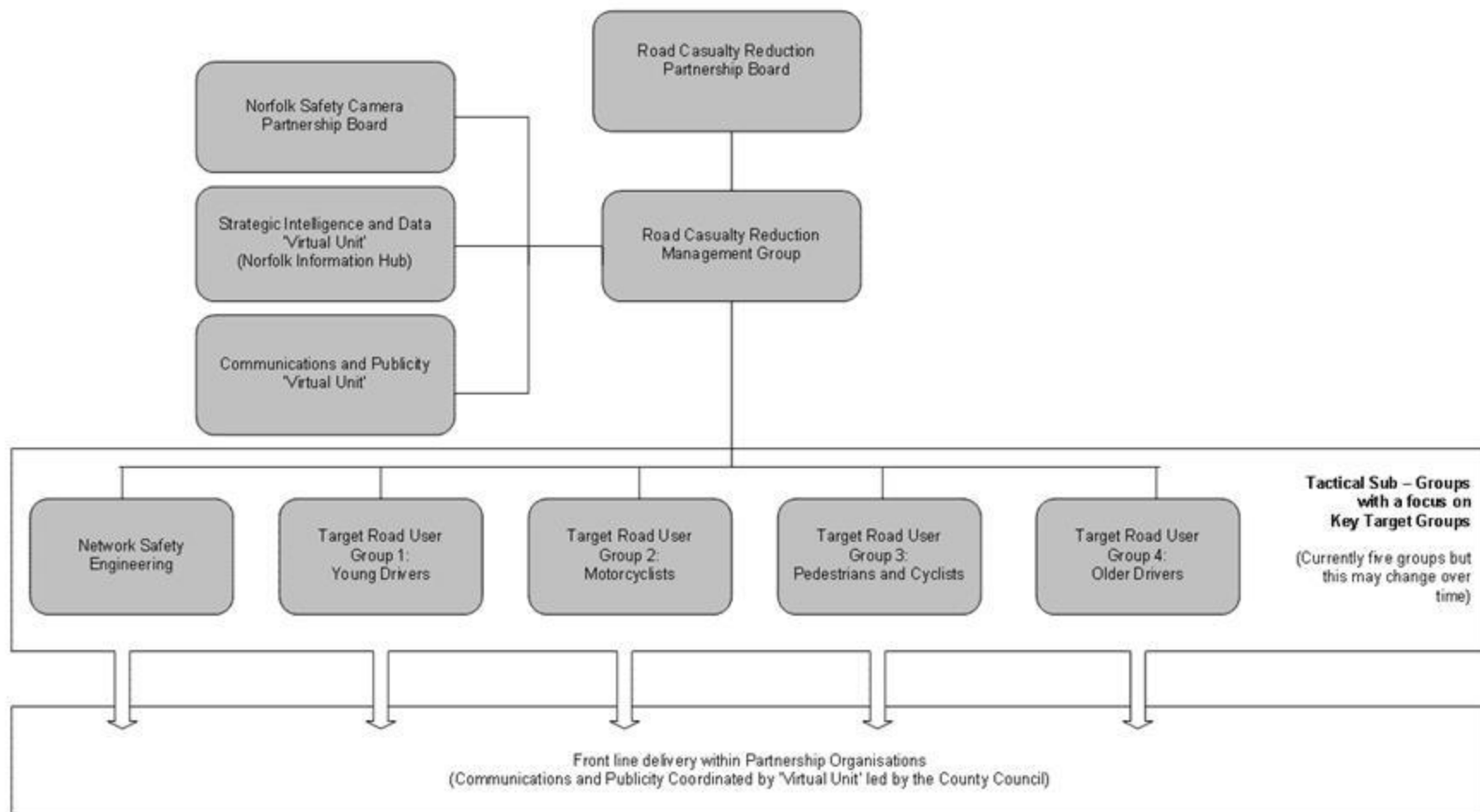
Street Scene Scrutiny

Tim Edmunds, Highways Network Manager

Norfolk County Council

(Chair of the Management Group of Norfolk's
Road Casualty Reduction Partnership)

Governance Structure for the Road Casualty Reduction Partnership

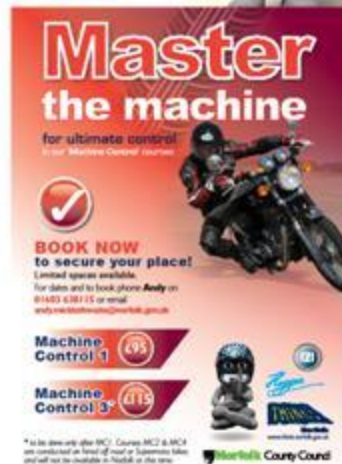


RCRP

Motorcycle Sub Group



Promotion of Existing Products





Hugger's Trusted Trainer



Enforcement



RCRP

Older Drivers Sub Group



GOLD
Guidance
for the
Older Driver

Drive safer for longer



**How to take
part in GOLD?**

- Drivers can apply themselves by completing the attached application form and returning it
- Drivers can be referred by their doctor and other health professionals
- Drivers can be referred by a family member

Relatives who feel concerned about an elderly family member's driving can refer them to the **GOLD** scheme.

RCRP

Vulnerable Road Users Sub Group



- First meeting postponed
- Second meeting attended by:
 - Public Health
 - NCC (Road Safety & Data)
 - Equestrian

Positive response

- Sustrans
- NNAB
- Pedestrian community

Lack of response

- Cycling community
- Constabulary

RCRP

Younger Drivers Sub Group

Do you have a young driver in the family?

Improve their safety with
Young Driver Workshops
and skid avoidance training

TREAD SAYS ONLY **£25** for the entire course



THINK!
Norfolk
www.think.norfolk.gov.uk

Norfolk County Council

TREAD A guide for the road ahead

Home About us Workshops Tread Platform How to use

I'm TREAD

You need to become the strong force in your life.

Listen. You've got a driving license. It's not just a piece of paper. It's a responsibility. That's good.

But you can't just listen. You've got to think. You've got to plan. You've got to be in the right direction.

WASH, WASH, WASH. There's a whole lot of Norfolk County Council who can help you in the right direction.

There's a lot around this website. It's right up your street.



Check the TREAD
You can find it at
City College
2011-12

A guide for the road ahead

TREAD



RCRP

Communications Group



RCRP

Other schemes of work



- **NCC Road Safety Team**
 - Education
 - Driver & Rider Development
- **Engineering**
- **Enforcement**
 - Roads Policing
 - Safety Camera Partnership

Network Safety 2014

Safety Engineering

Kevin Allen

Project Engineer (Network Safety)

Network Safety 2014

- Data Analysis
- Safety Engineering
- Safety Advice
- Safety Audit
- Safety Cameras
- Policy Development

Network Safety 2014

Data Analysis:

- Upward overall KSI trend
- Target groups above target trend
- Further analysis of motorcyclist KSI rise
- Identification of potential villages for rural Average Speed Camera enforcement

Network Safety 2014

Safety Engineering:

- Local Safety Schemes (£250k)
- City Cycle Ambition (£5.5m)
- Bid to Dft for rural 40mph zone (£220k)
- Parish Partnership Schemes – emphasis moving from VAS to SAM2 and Schools 20mph schemes.

Network Safety 2014

Safety Audit:

- Over 100 audits to date in 2014
- Norwich City Centre schemes
- A143-A12 Link Road
- LynnSport Link Road

Network Safety 2013

Safety Cameras:

- Maintenance of Roadside Asset
- 5 new fixed sites identified
- Removal/Relocation of redundant sites
- Prioritisation of digital upgrades
- Hard standings

Network Safety 2013

Local Policy Development:

- Speed Management Strategy – development of camera enforcement for 20mph speed limits
- B-road SCRIM regime (to address wet-weather incidents)
- Street Lighting and sign illumination requirements
- Re-evaluation of LSS budget?

Network Safety 2014

Opportunities for Improvement

- Further influence of Maintenance Regime
- Safety Inspections of the Strategic Network
– possible iRAP approach
- Regional collaboration and working with
'like' authorities.