

<b>Report to</b>	Cabinet 08 June 2016	<b>Item</b>
<b>Report of</b>	Head of planning services	<b>11</b>
<b>Subject</b>	Re-establishment of the Greater Norwich Development Partnership and update to the Local Development Scheme 2016-18	

## Purpose

To consider the re-establishment of the Greater Norwich Development Partnership (GNDP) Board to provide a forum for member oversight and discussion in relation to the preparation of the Greater Norwich Local Plan (GNLP). Also to consider the revised timetables envisaged for the production of the GNLP and approve the update to the Local Development Scheme required as a consequence of these changes.

## Recommendation

To:

- (1) endorse the re-establishment of the GNDP in accordance with the terms of reference attached at Appendix 1 to exercise political leadership for the planning activities carried out jointly by the Greater Norwich local planning authorities, in particular in relation to the Greater Norwich Local Plan; and,
- (2) approve an updated Local Development Scheme, by substitution of the contents of Appendix 2, in place of the relevant sections of the previous Local Development Scheme, for publication under section 15 of the Planning and Compulsory Purchase Act 2004 (as amended by section 111 of the Localism Act 2011).

## Corporate and service priorities

The report helps to meet the corporate priorities for a prosperous and vibrant city, a safe, clean and low carbon city and a healthy city with good housing.

## Financial implications

None.

**Ward/s:** All Wards

**Cabinet member:** Councillor Bremner – Environment and sustainable development

## Contact officers

Mike Burrell, planning team leader (policy)	01603 212525
Graham Nelson, head of planning	01603 212530

## Background documents

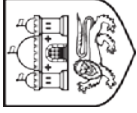
None

# Report

## Introduction

1. The Greater Norwich Growth Board at its meeting of 24 September 2015 agreed that the greater Norwich authorities would commence working together on a new local plan for the Norwich area to roll forward and replace the JCS (to be known as the Greater Norwich Local Plan, or GNLP). This was subsequently endorsed by individual councils in accordance with their constitutions. In the case of the city council this was formally endorsed by cabinet on 9 March 2016 by approving the publication of a revised Local Development Scheme (LDS) that included the timetable for the GNLP. This was preceded by a debate at the sustainable development panel on 24 February who recommended this course of action to cabinet.
2. Further to this agreement, work has been continuing with partners on: the preparation of the GNLP (particularly in relation to the call for sites and matters relating to the Sustainability Appraisal), the resourcing of the exercise (with closer working across the local authorities being embedded), and discussion of providing appropriate opportunities for joint member discussion of emerging documents.
3. The latter discussion has resulted in an agreement between the local authority partners to seek authority to establish an appropriate joint member group to provide oversight of the development of the joint Local Plan. Although there is some uncertainty due to the ongoing discussion about devolution and a rapidly changing national framework for planning, the partners have agreed to seek authority to re-establish a GNDP Board to do this. A similar mechanism was considered effective in the preparation of the Joint Core Strategy although it should be noted that some modifications to the previous structure are being proposed to reflect the fact that the Greater Norwich Growth Board now exists.
4. The re-established GNDP Board will meet in public and will make recommendations to the constituent authorities. The board would be made up of three elected members from each of the three constituent district authorities (Broadland, Norwich and South Norfolk) and one member from the Broads Authority. For Norwich the relevant GNDP board members would be the leader of the council, the cabinet member for environment and sustainable development and the cabinet member for resources and business liaison. Decision making remains with the responsible councils. In the case of Norwich City Council this will mean that reports will need to be considered by sustainable development panel, cabinet and full council at various stages of the plan preparation process in accordance with the constitution.
5. The proposed terms of reference for the GNDP Board are attached as Appendix 1.
6. The expectation is that GNDP Board will only be an interim measure and a more permanent arrangement will be established in due course for member oversight and possibly decision making on the GNLP. This is likely to be considered in the autumn following clarity being gained over the nature of any possible devolution agreement. But in the meantime there remains a need to progress work on the GNLP through current procedures so the re-establishment of the GNDP Board is considered necessary to do this.

7. It should also be noted that the programme to produce the GNLP will also require closer working between the Councils at officer level. It is the intention that work on the joint plan will be led by a single joint team of officers seconded from the partner authorities for the duration of plan preparation.
8. Whilst this matter has been under debate with partners, a revised and updated timetable for the preparation of the GNLP has been agreed. This timetable necessitates some update to the existing Local Development Scheme.
9. The opportunity has also been taken to make additional selected updates to the Local Development Scheme to reflect revisions to the programme. The most significant of these is the addition of a new supplementary planning document (SPD) in the form of a policy and design framework to inform the emerging proposals for the comprehensive regeneration of Anglia Square. The necessary updates are attached as Appendix 2.
10. The proposed terms of reference and necessary revisions to the Local Development Scheme were reported to sustainable development panel on 25 May 2016, including the intention to take forward the Anglia Square (SPD) which was reported verbally. The panel recommended that cabinet approve the changes to the LDS timetable and endorse the reestablishment of the GNLP board as proposed.

<b>Integrated impact assessment</b>		 <b>NORWICH</b> City Council
<p>The IIA should assess <b>the impact of the recommendation</b> being made by the report</p> <p>Detailed guidance to help with completing the assessment can be found <a href="#">here</a>. Delete this row after completion</p>		
<b>Report author to complete</b>		
<b>Committee:</b>	Cabinet	
<b>Committee date:</b>	8 June 2016	
<b>Head of service:</b>	Graham Nelson, Head of Planning	
<b>Report subject:</b>	Re-establishment of the Greater Norwich Development Partnership and update to the Local Development Scheme 2016-18	
<b>Date assessed:</b>	23 May 2016	
<b>Description:</b>	<p>The report is about the re-establishment of the Greater Norwich Development Partnership Board. The GNDP Board is considered the most effective and appropriate mechanism to direct (and give democratically accountable political oversight to) the production of the emerging Greater Norwich Local Plan, which will become part of the statutory development plan for Norwich to guide and manage new development in the area until 2036. Also outlines a revised timetable for the production of the new plan, seeking approval for the necessary changes to the Norwich Local Development Scheme - the statutory timetable for the production of key planning documents which planning legislation requires the council to publish and keep up to date.</p>	

	Impact			
<b>Economic</b> (please add an 'x' as appropriate)	<b>Neutral</b>	<b>Positive</b>	<b>Negative</b>	<b>Comments</b>
Finance (value for money)	<input type="checkbox"/>	<input checked="" type="checkbox"/>	<input type="checkbox"/>	The re-establishment of the GNDP will facilitate efficient and effective joint working on strategic planning issues across the Norwich area and reduce costs for individual councils
Other departments and services e.g. office facilities, customer contact	<input checked="" type="checkbox"/>	<input type="checkbox"/>	<input type="checkbox"/>	
ICT services	<input checked="" type="checkbox"/>	<input type="checkbox"/>	<input type="checkbox"/>	
Economic development	<input type="checkbox"/>	<input checked="" type="checkbox"/>	<input type="checkbox"/>	The proposals will enable more effective coordination and planning of strategic issues in relation to economic development
Financial inclusion	<input checked="" type="checkbox"/>	<input type="checkbox"/>	<input type="checkbox"/>	
<b>Social</b> (please add an 'x' as appropriate)	<b>Neutral</b>	<b>Positive</b>	<b>Negative</b>	<b>Comments</b>
Safeguarding children and adults	<input type="checkbox"/>	<input type="checkbox"/>	<input type="checkbox"/>	
<u>S17 crime and disorder act 1998</u>	<input type="checkbox"/>	<input type="checkbox"/>	<input type="checkbox"/>	
Human Rights Act 1998	<input checked="" type="checkbox"/>	<input type="checkbox"/>	<input type="checkbox"/>	
Health and well being	<input checked="" type="checkbox"/>	<input type="checkbox"/>	<input type="checkbox"/>	
<b>Equality and diversity</b> (please add an 'x' as appropriate)	<b>Neutral</b>	<b>Positive</b>	<b>Negative</b>	<b>Comments</b>
Relations between groups (cohesion)	<input checked="" type="checkbox"/>	<input type="checkbox"/>	<input type="checkbox"/>	

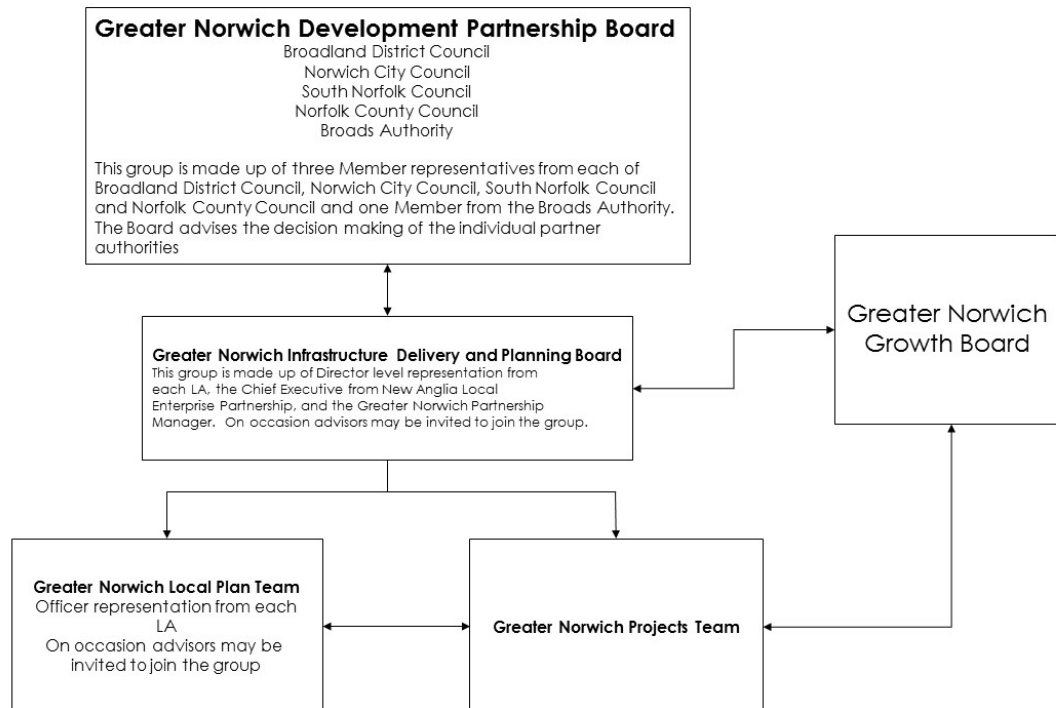
	Impact			
Eliminating discrimination & harassment	<input checked="" type="checkbox"/>	<input type="checkbox"/>	<input type="checkbox"/>	
Advancing equality of opportunity	<input type="checkbox"/>	<input checked="" type="checkbox"/>	<input type="checkbox"/>	The proposals will ensure that there is a transparent and democratically accountable process to ensure full and fair public involvement in decisions on the production of the statutory development plan for the Norwich area and in influencing its form and content
Environmental (please add an 'x' as appropriate)	Neutral	Positive	Negative	Comments
Transportation	<input type="checkbox"/>	<input checked="" type="checkbox"/>	<input type="checkbox"/>	The proposals will enable more effective coordination and planning of strategic issues in relation to transport
Natural and built environment	<input type="checkbox"/>	<input checked="" type="checkbox"/>	<input type="checkbox"/>	The proposals will enable more effective coordination and planning of strategic issues in relation to the natural and built environment
Waste minimisation & resource use	<input type="checkbox"/>	<input checked="" type="checkbox"/>	<input type="checkbox"/>	
Pollution	<input type="checkbox"/>	<input checked="" type="checkbox"/>	<input type="checkbox"/>	
Sustainable procurement	<input checked="" type="checkbox"/>	<input type="checkbox"/>	<input type="checkbox"/>	
Energy and climate change	<input type="checkbox"/>	<input checked="" type="checkbox"/>	<input type="checkbox"/>	The proposals will enable more effective coordination and planning of new development and ensure it is located and planned in a sustainable manner to reduce energy consumption and minimise impacts for climate change
(Please add an 'x' as appropriate)	Neutral	Positive	Negative	Comments
Risk management	<input checked="" type="checkbox"/>	<input type="checkbox"/>	<input type="checkbox"/>	

Recommendations from impact assessment	
<b>Positive</b>	
	The proposals will have a generally positive impact in providing a more effective focus for spatial planning in the Norwich area, reducing potential waste and duplication and providing democratically accountable political oversight to manage the process for the benefit of local people and ensuring full involvement in that process.
<b>Negative</b>	
<b>Neutral</b>	
<b>Issues</b>	



# Proposed Terms of Reference for Greater Norwich Development Partnership Board

## Governance and Support Arrangements



### The Greater Norwich Development Partnership Board

The Greater Norwich Development Partnership Board will exercise political Leadership for the planning activities carried out jointly by the Greater Norwich Local Planning authorities. This group is made up of three members from Broadland, Norwich City Council, South Norfolk Council, Norfolk County Council and a member from the Broads Authority. The group is supported in its role by the Director level representation from each Local Authority and a series of advisors who will be seconded into the group when necessary.

### Membership of the GNDP Board

Broadland District Council  
Norwich City Council  
South Norfolk Council  
Norfolk County Council

} up to three members from each Council, including Leader and Planning Portfolio

Broads Authority

up to three members including the Chair of EDT committee  
one member

**Substitutes:** Members may submit substitutes when unable to attend themselves in agreement with the chair

**Frequency:** Meetings are held quarterly or more frequently as required.

**Responsibilities**

- To prepare and monitor a joint Local Plan for the three district local planning authority areas of Broadland, City of Norwich and South Norfolk, to include integrated land-use and transport policies.
- To oversee the work of the Greater Norwich Local Plan team and associate bodies and ensure all bodies work effectively
- To make recommendations to the Councils and Broads Authority on any wider planning matter affecting the Broadland, City of Norwich and South Norfolk administrative areas.
- To advise on the development of the Local Transport Plan (LTP) implementation strategies and on future reviews of the LTP relevant to the area, including the Norwich Area Transportation strategy (NATS).
- To facilitate joint working between the local planning authorities and the local transportation authority on matters of common interest and benefit
- To ensure the Greater Norwich Infrastructure Plan reflects the needs of the Greater Norwich Local Plan

**The Greater Norwich Infrastructure Delivery and Planning Board**

The Directors are responsible for directing the Greater Norwich strategic planning activity on behalf of the Authorities and ensuring it meets the objectives.

**Membership of the Greater Norwich Infrastructure Delivery and Planning Board**

Broadland District Council	Head of Planning
Norwich City Council	Executive Head of Regeneration & Development
South Norfolk Council	Director of Growth and Localism
Norfolk County Council	Executive Director of Community and Environmental Services
Broads Authority	Director of Planning and Resources
New Anglia Local Enterprise Partnership	Managing Director
Greater Norwich Partnership	Partnership Manager

**Substitutes:** Director's may submit substitutes when unable to attend themselves

**In attendance at Board meetings**

Representatives from the Greater Norwich Local Plan Group and the Greater Norwich Projects Team will attend when required.

## Key changes to the published Local Development Scheme for Norwich

The Local Development Scheme for Norwich was published in March 2016. As a result of the ongoing discussions on the revised administrative and governance arrangements for the Greater Norwich Local Plan (as detailed in the report), an amended timetable and production milestones for the plan have been agreed and need to be reflected in the LDS. Accordingly, the following changes are proposed to the Local Development Scheme for Norwich. Subject to agreement by Cabinet, these would have effect from June 2016. The remainder of the Local Development Scheme remains unchanged.

- a) In Section 5 (Key Document Profiles), **delete** the Key Document Profiles table on pages 13 to 15 relating to the Greater Norwich Local Plan and **substitute** the table below. The amended sections are shaded.

### 5. Key document profiles

Document Title	Greater Norwich Local Plan (GNLP)
<b>Role and content</b>	To provide the strategic vision, objectives and strategy for future development of the greater Norwich area, to accommodate objectively assessed needs for growth and to identify specific sites for development in the period to 2036. The GNLP provides the strategic context for the preparation of lower level policy documents prepared by the three constituent district planning authorities.
<b>Status</b>	Statutory Development Plan Document (DPD)
<b>Conformity</b>	The document must conform with the National Planning Policy Framework 2012 (the NPPF) and with any subsequent review of the Framework. It should also accord with standing advice in national Planning Practice Guidance (PPG).
<b>Geographical coverage</b>	The three districts of Broadland, Norwich and South Norfolk, excluding the parts of those districts falling within the Broads Authority area.
<b>Joint working arrangements (if any)</b>	The plan will be prepared jointly with Broadland and South Norfolk district councils with the support of Norfolk County Council.

Document Title	Greater Norwich Local Plan (GNLP)
<b>Relationship with adopted local plan(s)</b>	<p>The GNLP will supersede</p> <ul style="list-style-type: none"> <li>a) the <b><i>Joint Core Strategy (JCS)</i></b> for Broadland, Norwich and South Norfolk (adopted March 2011, amendments adopted 2014)</li> <li>b) the <b><i>Norwich Site Allocations and Site Specific Policies Local Plan</i></b> (adopted December 2014)</li> </ul>
<b>Evidence required</b> <i>May include selective reviews of the evidence base already in place for the JCS and new and/or updated studies where necessary, dependent on the eventual scope and coverage of the plan.</i>	<p>This is likely to include (but not be limited to):</p> <ul style="list-style-type: none"> <li>- The published <i>Central Norfolk Strategic Housing Market Assessment (SHMA)</i> 2016, and future updates which may be integrated into a combined Housing and Economic Development Needs Assessment (HEDNA);</li> <li>- The emerging <i>Norfolk Housing and Economic Land Availability Assessment (HELAA)</i>;</li> <li>- An economic growth study (if not part of the HEDNA);</li> <li>- An infrastructure study;</li> <li>- A new or updated strategic flood risk assessment (SFRA);</li> <li>- An updated retail study;</li> <li>- A new or updated water cycle study;</li> <li>- A new or updated green infrastructure study;</li> <li>- A new or updated open space study;</li> </ul> <p>The plan must be accompanied by an independent Sustainability Appraisal (SA) and Habitats Regulation Assessment (HRA) which will draw on, and themselves be part of, the evidence base.</p>
<b>Production milestones</b>  <b>Commence document production</b> Publication of Local development scheme  Review, consult on and revise (where necessary) the Statements of Community Involvement for participating districts Call for sites – invitation to put forward specific development sites for inclusion in the GNLP Commission, prepare and publish evidence studies required to support the GNLP	<p><b>December 2015</b></p> <p>March 2016 (GNLP timetable amended May 2016) by Summer 2016</p> <p>May – July 2016</p> <p>March 2016 – May 2017</p>

Document Title	Greater Norwich Local Plan (GNLP)
Complete and publish draft ( <b>Regulation 18</b> ) plan for consultation: to include issues and policy options and shortlisted development sites	October-December 2017
Complete and publish pre-submission draft ( <b>Regulation 19</b> ) plan for consultation: to include agreed strategic policies, sites and site-specific proposals.	Feb-March 2019
Assess representations in response to Regulation 19 draft, prepare all formal submission documents	April 2019 – June 2019
Formal submission of GNLP to Secretary Of State ( <b>Regulation 22</b> )	August 2019
Examination in public	February 2020
Consultation on inspector's proposed main modifications	June-July 2020
Publication of Inspectors' Report	October 2020
Adoption of the Greater Norwich Local Plan	<b>December 2020</b>
<b>Monitoring and review</b>	Annual Monitoring report and five year housing land supply updates
<b>Governance and Resources</b>  <i>Note: The expectation is that the GNDP Board will only be an interim measure and a more permanent arrangement will be established in due course for member oversight and possibly decision making on the GNLP. This is likely to be considered in the Autumn following clarity being gained over the nature of any possible devolution agreement.</i>	<b>Resources</b> A dedicated <b>Greater Norwich Local Plan Team</b> comprising officers from the three constituent district authorities and Norfolk County Council, initially working alongside a Greater Norwich Project Team responsible for wider planning and implementation matters across the area.  <b>Governance</b> The <b>Greater Norwich Development Partnership Board</b> will exercise political leadership and oversight for the planning activities carried out jointly by the Greater Norwich local planning authorities. This group is made up of three elected members from Broadland, Norwich City Council, South Norfolk Council, Norfolk County Council and a member from the Broads Authority. The group is supported in its role by the <b>Greater Norwich Infrastructure Delivery and Planning Board</b> with Director level representation from each Local Authority and a series of advisors who will be seconded into the group when necessary. The Directors are responsible for directing the Greater Norwich strategic planning activity on behalf of the Authorities and ensuring it meets the objectives.

- b) On page 18, **substitute** the Key Document Programme diagram with the revised programme diagram overleaf.

In addition, the proposals for new supplementary planning guidance for Anglia Square require selected changes to the commentary in relation to SPD, as follows:

- c) On Page 10, add the following commentary after the Bethel Hospital Planning Brief:
- ***Anglia Square Planning Policy and Design Framework.*** The important but dated neighbourhood shopping centre of Anglia Square provides a critical focus for and establishes the image of the northern city centre and the role it plays within Norwich. A comprehensive redevelopment of Anglia Square has the potential to change the whole of the northern city centre area for the better, attract new commercial and residential development and address issues of long term decline and multiple deprivation. Changes to market conditions and the expiry of the Northern City Centre Area Action Plan mean that more detailed and updated guidance is now needed to inform future proposals for the regeneration of the area. The will provide supplementary policy building on the approach set out in policy 11 of the Joint Core Strategy and illustrated on the Norwich City Centre key diagram. It is intended to inform an application for the comprehensive redevelopment of Anglia Square which is expected to be submitted in early 2017.
- d) On Page 12, amend the commentary re Northern City Centre Area Action Plan Legacy Work as follows:
- ***Northern City Centre Area Action Plan legacy work.*** Now that the NCCAAP has expired, a policy and design framework interpreting JCS policy for Anglia Square is intended to be produced (see above), whilst there may be a need for additional site specific briefs, guidelines and masterplans in the LDS period, potentially to assist the delivery of housing and mixed use development on sites previously allocated by the NCCAAP and to support other regeneration opportunities elsewhere in the city. The detail to be produced by government on the role of the Brownfield Register is likely to determine the best approach. Until that detail is forthcoming, it is not practical to commit to any particular approach or include specific documents in the LDS.

**LOCAL DEVELOPMENT SCHEME FOR NORWICH, 2016-19  
KEY DOCUMENT PROGRAMME - UPDATED JUNE 2016**

KEY	General	<div> <div></div> <div>R</div> <div></div> </div> <div></div> <div>*</div>
	LDS production/review Resolution to bring LDS into effect Commencement of this LDS period Commencement of individual document production	
Adopted development plan documents	<div> <div></div> <div>E</div> <div></div> </div> <div></div> <div>&amp;</div>	
	Adopted DPDs (local plans) in use Adopted DPD (local plan) expiry Policies map update (to delete redundant NCCAAP policies)	
Greater Norwich Local Plan (GNLP)	<div> <div>S</div> <div></div> <div>18</div> <div>19</div> <div></div> </div>	Call for sites Preparation of draft Regulation 18 plan and supporting evidence Reg 18 draft consultation stage Assessment of responses/preparation of Reg 19 pre-submission plan Reg 19 publication (pre-submission) stage Assessment of responses/preparation of Reg 22 submission document <u>Subsequent statutory GNLP milestones not included in this LDS period</u> August 2019 February 2020 June/July 2020 December 2020
	Call for sites Preparation of draft Regulation 18 plan and supporting evidence Reg 18 draft consultation stage Assessment of responses/preparation of Reg 19 pre-submission plan Reg 19 publication (pre-submission) stage Assessment of responses/preparation of Reg 22 submission document <u>Subsequent statutory GNLP milestones not included in this LDS period</u> August 2019 February 2020 June/July 2020 December 2020	Call for sites Preparation of draft Regulation 18 plan and supporting evidence Reg 18 draft consultation stage Assessment of responses/preparation of Reg 19 pre-submission plan Reg 19 publication (pre-submission) stage Assessment of responses/preparation of Reg 22 submission document <u>Subsequent statutory GNLP milestones not included in this LDS period</u> August 2019 February 2020 June/July 2020 December 2020
Norfolk Strategic Framework (NSF)	<div> <div></div> <div>C</div> <div></div> </div> <div></div> <div>A</div>	Evidence gathering and production of draft framework Consultation on draft framework Production of final framework Adoption of NSF by constituent Norfolk councils <i>Provisional timetable – may be subject to change.</i>
	Evidence gathering and production of draft framework Consultation on draft framework Production of final framework Adoption of NSF by constituent Norfolk councils <i>Provisional timetable – may be subject to change.</i>	Evidence gathering and production of draft framework Consultation on draft framework Production of final framework Adoption of NSF by constituent Norfolk councils <i>Provisional timetable – may be subject to change.</i>
Supplementary Planning Documents (SPD)	<div> <div></div> <div>12</div> <div>A</div> </div>	SPD production SPD Consultation - draft (Regulation 12) SPD adoption
	SPD production SPD Consultation - draft (Regulation 12) SPD adoption	SPD production SPD Consultation - draft (Regulation 12) SPD adoption
Statement of community involvement review (for info)	<div> <div></div> <div>C</div> <div></div> </div> <div></div> <div>A</div>	Consultation on revised SCI Adoption of revised SCI
	Consultation on revised SCI Adoption of revised SCI	Consultation on revised SCI Adoption of revised SCI