

Norwich Area Museums Committee 3 March 2020

Norwich Museums briefing: December 2019 to February 2020

1. Exhibitions at Norwich Castle

1.1 Laura Wilson - *Deepening* (18 January – 29 March 2020)

Deepening is a new film work by artist Laura Wilson exploring the hidden landscape of Must Farm, the well-preserved settlement of the Late Bronze Age (1000 – 800BC) located on the edge of a working quarry at Whittlesey, near Peterborough. The site has revealed many important discoveries about how people lived and worked. *Deepening* explores these discoveries, opening up questions around labour, trade and everyday life.

Wilson's work has been commissioned as part of *New Geographies*, a three-year project which aims to create a new map of the East of England based on unexplored or overlooked places. For this project, the public was invited to nominate unexpected places in the region that they found meaningful and interesting. Over 270 sites were identified and ten artists commissioned to highlight some of those places through new site-specific work. Wilson responds to the nominated site 'View from the North Brink across the Fens' from which Must Farm is visible.



Must Farm © Courtesy the Artist

1.2 Spotlight: Works from the Modern and Contemporary Art Collections (25 January – 13 December 2020)

NMS Curator of Modern & Contemporary Art Dr Rosy Gray has curated the new exhibition, *Spotlight: Works from the Modern and Contemporary Art Collection* for the Timothy Gurney Gallery from 25 January 2020 to 13 December 2020. This exhibition showcases Norwich Castle's outstanding collection of modern and

contemporary art, including works by Gwen John, Andy Warhol, Frances Kearney and Bridget Riley. At the heart of the exhibition is a changing display of ten recent acquisitions. These include works by some of the most exciting artists working today, including Oreet Ashery and Eva Rothschild.



Frances Kearney, *Untitled III* from the series *Running Wild*. © Courtesy the Artist

1.3 Tor Falcon – Rivers of Norfolk (12 July 2019 – 12 January 2020)

This remarkable body of drawings was the result of a three-year project revealing the wonderful variety and beauty of Norfolk's rivers. The exhibition was on show in the Colman Project Space and supported by the East Anglia Art Fund. A second hang of Falcon's work opened in October 2019.



Tor Falcon *The Wensum at Attlebridge* © Courtesy the Artist

1.4 *Coming Home*: Nelson Portrait – 12 October 2019 to 26 January 2020

The famous portrait of Admiral Lord Nelson, painted by William Beechey, was on display at Norwich Castle until 26 January 2020 as part of the major National

Portrait Gallery loan programme – *Coming Home*. This project sees 50 portraits of iconic individuals from the national collection travelling to the towns and cities most closely associated with their subjects. This portrait of Lord Nelson by William Beechey is considered the most faithful likeness of Norfolk's most famous son. It was commissioned by the City of Norwich in recognition of Nelson's Norfolk roots, and was painted by Beechey, prior to the large full-length portrait by the same artist which is still in the Civic collection in Norwich.



Horatio Nelson by Sir William Beechey, 1800 © National Portrait Gallery, London.
Purchased with help from the National Heritage Memorial Fund, 1985.

2. Recent Acquisitions Exhibition

2.1. *Heron in the Shallows* – Colman Project Space

Heron in the Shallows by Maggi Hambling is currently on show in the Colman Project Space. This painting by internationally renowned artist, Maggi Hambling, CBE, was donated to the Norwich Castle collections by Sir Timothy Colman in memory of his sister Penny Allen, née Colman, who died in 2018, was a close friend of the artist who admired and collected her work for many years.

The painting, completed in 2013, has been seen at Norwich Castle before, when it was one of the most popular exhibits loaned to *The Wonder of Birds* exhibition in summer 2014. Hambling is well-known for her dynamic portrayals of herons and cormorants, capturing their speed and grace. In this work she is also telling a timely environmental story: the heron, seeking fish, is surrounded only by pollution.



Heron in the Shallows, oil on canvas, 2013

3. Curatorial Update

3.1 Art Department

3.1.1 Exhibition curation

Dr Francesca Vanke continues to work on the exhibition *Castles: Reality, History and Myth, Paintings from the National Gallery, London*.

Dr Giorgia Bottinelli is continuing to research the Crome bicentenary exhibition (23 April-5 September 2021) that will help mark the Centenary of the Friends of Norwich Museums. Dr Bottinelli is also curating the *Where Land and Water Meet: Norfolk's Rivers, Streams, Brooks and Broads*, an exhibition of over fifty works on paper to open in the Colman Watercolour Gallery in March 2020.

Dr Rosy Gray's new exhibitions, *Laura Wilson: Deepening* and *Spotlight: Works from the Modern and Contemporary Art Collection* are now both open, in the Boudica Gallery and the Timothy Gurney Gallery respectively.

3.1.2 Art acquisitions

Dr Francesca Vanke has successfully raised the funds required to purchase the unique and magnificent early 17th century *pietre dure* table-top once belonging to the Paston family. This item, brought by William Paston from Florence in 1638, displays the Paston coat-of-arms. It had been sold abroad but was discovered in a private collection and was displayed as a loan during the *Paston Treasure* exhibition at both Yale Center for British Art and Norwich Castle in 2018. To have secured it for Norfolk is a significant coup, since if NMS had not purchased it, it

would have been bought by an American museum. The table-top is now on permanent display beside the Paston Treasure painting.



The *Pietre dure* table-top

Dr Rosy Gray has successfully raised the funds to purchase a new film work by internationally acclaimed British artist Beatrice Gibson. This demonstrates Norwich Castle's commitment to building its collection of work by women artists, and its moving image collection, ensuring that NMS is acquiring -- and exhibiting -- work that accurately reflects artistic diversity in the twentieth-first century. Gibson's film *I Hope I'm Loud When I'm Dead* (2018) is a highly personal, moving account of the artist's world set against the backdrop of Donald Trump's inauguration ceremony in 2017. Shot in Europe and the US, the work draws on a rich variety of visual and literary material, exploring the individual's significance in an increasingly volatile political climate.

Dates for the first two legs of the East Anglian tour of the region's first Turner painting *Walton Bridges*, are now confirmed. It will be on display at Lynn Museum 14 July – 20 September 2020, and at Colchester Castle 26 September – 9 April 2021.

3.2 Archaeology Department

An update on Archaeology Department recent acquisitions and activities will be given at this meeting by Dr Tim Pestell, Curator of Archaeology.

3.3 Natural History Department

3.3.1 Deep History Coast

On Monday 10 February North Norfolk District Council's Tourist information centre in Cromer was re-opened, featuring Deep History Coast merchandise, interpretation, graphics and films. NMS staff and freelancers were in attendance with fossils and fact sheets from the NMS collections. Developed with NMS Senior Curator of Natural History Dr David Waterhouse, the centre will act as a hub for activities and will signpost visitors to where they can dig a little deeper, for example by visiting Cromer Museum's geology gallery.



The 'Discovery Zone' at North Norfolk's Visitor Centre

3.3.2 Dippy on Tour

The Natural History Museum's (NHM) 'Dippy' the *Diplodocus* will be exhibited at Norwich Cathedral 11 July – 31 October 2020. NMS has supported colleagues at Norwich Cathedral with this project, sharing teaching resources and activities, skills and experience and will be loaning some fossil specimens to the Cathedral for exhibit alongside 'Dippy'. Dr David Waterhouse will be giving talks, workshops and fossil handling sessions at the Cathedral, and there will be a tie-in of events and activities across NMS sites county-wide.

Work has also started on a small installation within Norwich Castle's Bird and British Wildlife Galleries, highlighting the fossil giants such as Mammoths, rhinos and hippos, that roamed the county not so very long ago.

3.3.3 Swallowtail and Birdwing Butterfly Trust

The Natural History and Geology collections at NMS have the status of 'International Importance'. Volunteers and trustees from the Swallowtail and Birdwing Butterfly Trust have been using the Lepidoptera collections for valuable data in their studies. The Trustees wanted to hold a short meeting after a study session with the collections and offered a talk about their society open to

interested staff in return. On Tuesday 4 February Dr Mark Collins gave a lecture entitled *Conservation of Swallowtails – in Norfolk and Worldwide*. Feedback from the talk was extremely positive, and more talks by researchers for staff are planned for the future.

3.4 Costume and Textiles Department

Senior Curator of Costume & Textiles Ruth Battersby Tooke continues to work on the forthcoming *Textile Treasures* exhibition (26 July – 6 September 2020). One of the most important objects to be featured in this show is the so-called Bellamy Quilt. This was lent to the ground-breaking *British Folk Art* exhibition at Tate Britain in 2014, where it was prominently positioned as the very first object visitors saw when they entered the show. It is a stunning applique and embroidered bedcover which has a wonderful story behind its creation. A Great Yarmouth couple, Charlotte and Herbert, spent evenings during their engagement in 1890-1 creating this scrapbook quilt together. It is filled with images of Victorian popular culture such as cartoon characters, local sights like pub and optician signs and everyday pleasures such as a boiled egg! It is a fascinating object not just because of its local and historical significance but because the bedcover is a unique visual conversation between two people.



The Bellamy Quilt

4. Strangers' Hall

4.1 Annual Deep Clean

The whole of January at Strangers' Hall is devoted to the annual Deep Clean event, involving NMS staff from Strangers' Hall and the Conservation team, alongside over 40 volunteers drawn from NMS, recruited by the Volunteer Co-ordinator or already working with NMS as part of the ongoing partnership working with local organisation English+. Assistant Curator Bethan Holdridge oversaw the operation once again this year.

This essential work of top- to-toe cleaning, freezing and redressing every room setting has become an annual event and is an excellent way of not only fostering team spirit and a sense of pride in the building and its collections, but also helps identify challenges for the year ahead. This year the discovery of new evidence for woodboring beetle has called for the additional packing up of several items of furniture that are now being treated in the freezer at the Norfolk Collections Centre at Gressenhall. The Deep Clean has also provided the opportunities to refresh a small display in the Toy Room, now housing much-loved children's books and toy characters, including Beatrix Potter books, Bagpuss and Rupert Bear. The display has ably been designed and installed by Wednesday Batchelor, the Documentation team's Teaching Museum trainee.



New Toy Room display created by a Teaching Museum Trainee

4.2 Curatorial work at Strangers' Hall

Strangers' Hall Senior Curator Cathy Terry has recently started work cataloguing the substantial collection of documents, reports, committee minutes and guidebooks that make up the Strangers' Hall archive, focusing upon the early period in the museum's history when Strangers' Hall was given by Leonard Bolingbroke to the City of Norwich and opened as a City of Norwich Museum in 1923. This is essential work to inform the celebration of this centenary by means of display and publicity for the centenary year. As part of the ongoing partnership with the University of East Anglia, Batuhan Ozdemir has started work on the documentation project under Cathy Terry's supervision.

As part of curatorial work towards a planned exhibition of the Norwich Textiles collection, Cathy Terry has submitted funding applications to locate and examine examples of 18th and 19th century garments found in collections in the Netherlands and Sweden, with the hope of negotiating loans to include such examples in exhibition for local people to see and appreciate.

4.3 Love Light Festival

Strangers' Hall has been working with illustrator Hannah Broadway to install the *A – Z of Love and Belonging* in the front windows as part of the Love Light Festival running in Norwich from 14 to 16 February. This was an excellent opportunity to raise the museum's profile on its re-opening weekend as well as to be part of a city-wide trail attracting thousands of people.

5. Museum of Norwich at the Bridewell

5.1 Annual SHARE / UCM Collections Care Conference

On 30 January Curator Hannah Henderson presented a paper to the 6th Annual SHARE/UCM Collections Care Conference entitled '*Sell Out? Balancing the impact of commercial activity with heritage*'. Hannah talked about the partnership with History Mystery on developing escape room games to an audience of over 60 delegates from all over the region, ranging from The National Trust and English Heritage through to smaller independent museums. Hannah explained the various elements of the development and delivery of both games, including the new game *Goin' Up the City*, which is set in the upstairs galleries at the museum and launched at the end of 2019. There was a great deal of interest in this work, with delegates particularly keen to understand the 'pop up' nature of this new game and how this might work in their own settings.



The *Goin' Up the City* escape room game at the Museum of Norwich

5.2 Schools programme at the Museum of Norwich

During January and February the museum has been busy with around 265 school children enjoying sessions such as *Florence Nightingale*, *Toys in The Past* and *Made in Norwich*. Parts of the new *Florence Nightingale* session are being delivered in the recently cleared undercroft, providing the children with a very unique, atmospheric experience in a space that was previously inaccessible. The museum also regularly welcomes small groups of home educated children and older learner groups, such as the Wroxham U3A, who visited recently.



Florence Nightingale schools event

5.3 Work with Older People

Staff at the Museum of Norwich continue to run the dementia-friendly coffee mornings, which take place once a month on a Thursday morning. The team are exploring ways to adapt these sessions to attract more visitors and broaden the offer. Following on from the discussions in late 2019, Curator Hannah Henderson has contacted the co-ordinators of the organisation Friend in Deed, who hope to bring a small intergenerational group in the spring. After this initial visit, staff hope to offer more sessions to other groups that they work with. Staff have also been re-establishing links with Age UK Norwich to discuss ways of working together and how best to attract their groups to the museum.

6. Learning Team – visitor programme, schools and projects

6.1 *Light it up!* Christmas holiday programme at Norwich Castle

6.1.1 Torch-lit Festive Keep Tours

The regular offer of Keep tours for general visitors was given a medieval festive flavour across the Christmas school holidays. William the Conqueror was crowned on Christmas Day and it is recorded that King Henry I celebrated Christmas in Norwich in 1121. These tours gave visitors a glimpse into the traditions and happenings of Christmas in medieval England and were a perfect way to welcome visitors to the Christmas Keep and tell them about how the Keep will change as a result of the redevelopment project.

6.1.2 Green Man Winter Story Telling

In a magical storytelling setting created in the Norwich Union Gallery, this session explored the lives of those who sometimes live on the edges of society through the figure of The Green Man and his relationship with nature. This winter's tale looks at old belief systems that feed into facets of Christmas today. Links were made between The Green Man as a precursor to Father Christmas. Threaded through the story were also themes linked to ecology and respect for the environment. The majority of participants had not come to the Castle especially for the event, instead finding out about it from staff, posters or tannoy announcements in the building. 100% of visitors taking part rated the activity as excellent or very good. Feedback comments from participants included: *very engaging and very well presented; nice storytelling, kept children engaged; engaged well with the audience, good tale and well presented.*

6.2 Make Believe @Norwich Castle Keep

To welcome the youngest audiences, the Learning Team created a 'Make Believe' area in the Keep, with small-scale replica furniture, costume and books, supported by FCC Environment funding through the WREN Flagship Project Scheme. With the decant of all objects and interactives from the Keep now complete, families with young children were finding it more difficult to engage with the space, especially as information panels and tours are not aimed at the very youngest visitors. With the 'Make Believe' area now available, young families are once again spending time in the keep, exploring ideas of the medieval castle and the people who lived there through play and story-telling. This area will remain in place until the principal contractors commence works.

6.3 Adult engagement activities, tours and talks

6.3.1 Songs of Winter - Festive vocal workshops at Norwich Castle

To fill the Keep with the sounds of the winter festival, Learning Team staff collaborated with Jon Baker, co-director of The Voice Project to bring singing to Norwich Castle Keep. In workshops designed for older children and adults, visitors were able to sing songs of winter around the Christmas tree in the atmospheric Castle keep. No experience was necessary to take part and all music was taught by ear. This approach widened the access opportunities encouraging those who might not have experience of vocal music making to take part. Evaluations show that 100% of respondents said that the activity was "Excellent" or "Very Good" and 75% of participants visited because of the activity. Comments included: *brilliant, would definitely come to more singing related activities here and wonderful building, excellent tuition, Jon made it fun with a great sense of achievement.*

6.3.2 Taboo: Animals in Society

Visitors were invited to join a member of the Learning Team in a conversation that explored the Natural History collections and the roles and values that animals hold in today's society. Visitors were offered foldable chairs to encourage their comfort and engagement. Whilst the 'tour' provides facts and statistics in places, it also offered opinions, thoughts and ideas. *Animals in Society* is the fourth and newest addition to the Taboo programme of 'gallery conversations' and launched in early February. Taboo takes a familiar and recognisable format – the museum tour – but twists it a little. Visitors are given the chance to engage with the collections and learn about them, but also to learn from the objects on display through conversation with other visitors and well-informed, skilled learning staff. The Learning Team has been supported by Dr David Waterhouse, Curator of Natural History, and is an excellent example of the value in bringing together curatorial expertise, the Learning Team's skill in person-focused engagement and our visitors' own views on what is displayed in the museum. NMS Event & Visitor Programme Manager Anna McCarthy – who

has led the development of Taboo – is preparing a Case Study which will be shared with the museum sector through publications and/conference talks.

6.3.3 Castle Writers: writing workshops for adults

Led by published writer Amanda Addison, Castle Writers continues to regularly



Creative writing workshops where adults play with words to explore the galleries at Norwich Castle and use the collections to inspire imagination.

attract adults to Norwich Castle to participate in creative writing workshops. Amanda expertly guides and inspires participants to start a new piece, work in new styles/genres, or rejuvenate unfinished work. Adult workshops of this kind encourage deeper engagement with NMS collections and sites. In this instance, people, often from the local area and students, have a chance to creatively access and enjoy the thousands of stories captured in the objects on display and then create new stories of their own.

Participation in creative and imaginative activities is known to enhance well-being

and have positive effects on mental health. With this in mind, the Learning Team are currently planning their contribution to the Norfolk Creativity and Well-Being week in May 2020.

6.4 Young People and Youth Engagement programme

6.4.1 Norfolk Youth Offending Team Castle Project 6: Autumn Term 2019

Norwich Castle's partnership with the Norfolk Youth Offending Team (YOT) dates back to 2004 when an annual creative project was established to develop team-working skills in young offenders and confront perceptions of spaces that could be seen as linked with authority. The strength of the programme lies in it taking young people out of their familiar surroundings and offering an opportunity to try something new. Many of the participants that come to the Castle have issues around low self-esteem, so this is a challenge in itself. However, the way that the programme is set up allows these steps to be taken with guidance and support from specialist NMS and YOT staff.



Objects made by the participant in the first cohort

The most recent YOT programme ran for seven weeks comprising of three cohorts of two-week sessions and a celebration evening in the final week. Each cohort of young people had a set of two two-hour workshops running on consecutive Wednesdays with the outcome of making an object out of clay inspired by the Museum's collections. Colleagues at the NCC Youth Offending Team put together cohorts of young people that they felt would benefit from a programme such as this. The focus of these sessions is to challenge confidence issues; advocate positive attitudes and address behaviours that the young person may have used to cope with difficult

situations in the past.

The NMS YOT sessions are based around the concept of 'Making Your Mark'. What the marks and objects that people have left behind can tell about their lives. For example, the sundial scratched into the Chapel walls in the medieval keep by a prisoner, or the swipe of a Roman tile maker's finger in a piece of tegula. It challenges notions of authority – history is not just the province of Kings and Queens – but also about what these objects can mean to us today. Staff have noted conversations about legacy and how people interpret things from the past. The objects that we make, in turn, can be interpreted to see what kind of legacy our we want to leave behind. The notion is also to generate a sense of responsibility in the young people, that their actions have effects on the world around them too. What marks will they leave? If they're promoting a challenging legacy – one of anger, then it is easier to examine why this might be. Analysing an object rather than challenging an individual is far less confrontational.

All of the young people were first time participants in this programme. The first week saw a particularly disenfranchised young person who was despondent and lacked a drive to solve problems for themselves. NMS staff tackled their lack of motivation by creating small steps in the clay work that meant that the participant could take on a whole challenge by breaking it down into manageable pieces. The end results were a clay coil vase and some bowls, none of which the participant expected to make at the beginning of the sessions. This illustrated the concealed outcomes of the project. The objects themselves are not the outcomes - the tactics used to overcome challenges are. Clay is a good medium in which to work as it is not something that is done regularly in art classes at school.

The final YOT show was the most successful yet. The inspiration had been with things that people could find for themselves from the past, like the mud larkers that



Our objects on display

scour the banks of the river Thames. The Paston Treasure painting made a perfect backdrop for the things that had been made. The clay objects created by the young people were displayed to suggest that their work was as important as the collection displayed in the Paston painting. The final show was attended by three of the young people, some of whom were joined by family members. The young people received a certificate that can be used with a CV when looking at work or college applications. There was a strong attendance from the NCC YOT team.

6.4.2 Kick the Dust: Norfolk! project

In addition to the YOT 'Castle Project' partnership described above, additional activities targeted at young people have been developed as part of the NMS National Lottery Heritage Fund-funded *Kick the Dust: Norfolk!* project.



Recent Kick the Dust activities in Norwich include:

Museum Club relaunch

Since 1925 Norwich Museums have run a 'Museum Club' for children. With funding from the Kick the Dust Project it has been possible to remove the charge and relaunch Museum Club with a new cohort of members at Norwich Castle. Rachel Daniel (Kick the Dust Project Worker for Norwich) is leading the development of this group and supports the young people to express their interests and ideas through open conversation and establishes a safe, level playing field on which the young people can meaningfully shape their own participation and in turn that of other visitors and staff. Museum Club is already collaborating with the Keep Redevelopment Project Curator, Andrew Ferrara, to open up opportunities for the group to gain experience of curation through the 'Castle on Tour' pop-up exhibition as part of the Keep Project Activity Plan.

Digging Deeper!

In conjunction with artist Laura Wilson's work 'Deepening' Rachel Daniel facilitated a week-long programme of workshops for young people aged 15+ at Norwich Castle during February half term week. The opportunity encouraged older young people to think about how they engage with contemporary art in a museum setting and culminated in them delivering a family drop-in activity for visitors to Norwich Castle on the second Saturday of the holiday week. The young people will have the option of achieving a Bronze Arts Award through the week, giving them a recognised and transferable outcome from their involvement.

6.5 Norwich Learning Team – Schools Update

The Norwich Museums Learning Team continues to facilitate and deliver high-class curriculum-based sessions for schools at the three Norwich museum sites to large numbers of school children (figures as below)

	Castle	Museum of Norwich	Strangers' Hall	Outreach	Total
Dec-19	1104	76	116	-	1296
Jan-20	1555	173	(closed)	420	2148

6.6 Norwich Museums Schools Programme

The *A Day in the Life of the Ancient Egyptians* and *Romans & Iceni* continue to be the most often booked sessions at Norwich Castle, with *Robert Kett* remaining popular at Strangers' Hall and *Chocolate* at the Museum of Norwich. The popularity of these events demonstrates the importance of strong, clear links between the National Curriculum and the content/learning objectives of the NMS schools' programmes. Activities for schools taking place at Strangers' Hall and the Museum of Norwich have been encouraged where possible to take some of the pressure off spaces at Norwich Castle as staff prepare for building works to commence. Feedback from teacher evaluations for session at both sites is very positive, although slight dissatisfaction is expressed around facilities such as lunch spaces and toilets. In the setting of these intricate historic buildings limited facilities will always be challenging, especially for larger groups, and teachers are encouraged to visit the sites (for free) in advance of the school trip to familiarise themselves with the facilities.

6.7 Norwich Museums Schools Outreach

As part of the Keep Project Activity Plan programme, two outreach sessions for schools have been developed and resourced and staff trained to deliver.

For Early Years children in nursery settings:

A New House for the King - The King and Queen are sending out their most trusted advisor to search the land for great builders from among the children of Norfolk. Be inspired and engaged by a range of history-themed maths and literacy activities.

For Key Stage One children in schools:

Life in a Castle - While the Castle Keep is being redeveloped, we'll be offering an exciting new outreach event to replace Life in a Castle at the museum, so we can bring stories from the Castle to your school! Meet some of your favourite

characters, including Lady Isabella, Maud the maid or Jack the rat-catcher, and find out more about what it was like to live in a medieval castle.'

Both sessions are proving popular with an increasing number of bookings now being taken. Staff anticipate that the second half of the spring term and early summer term (with fine weather and the children being slightly more mature) will be the most popular for outreach. The purpose of the outreach programme is to sustain positive relationships with schools across the county during the redevelopment project, share information about what schools can expect to see in the redeveloped Castle, and to provide sessions which encourage young children to explore the history and heritage of one of Norfolk's most iconic buildings.

6.8 A-Level Art Masterclasses

In conjunction with the new *Spotlight* exhibition (25 January - 13 December 2020), A-level Art students from Norfolk had the opportunity to develop their own artistic thinking, skills and techniques by working with a practising artist. The exhibition showcases Norwich Castle's outstanding collection of Modern and Contemporary art including new acquisitions by some of the most exciting artists working today, including Oreet Ashery and Eva Rothschild. Artist Sam Drake introduced his work as a painter, looking at what it is like to work as an artist and revealing some of his creative approaches. The masterclass aimed to develop student's ability to manipulate their own work through collaging, fragmentation and scale transformations. Students incorporated methods observed in the *Spotlight* exhibition by creating a series of drawings, paintings and collages leading to a collaborative wall drawing. Sam Drake studied Painting and Printmaking at the Glasgow School of Art and recently graduated with a Masters in Painting from the Rhode Island School of Design. He has received international attention for his works that grapple with memory and nostalgia. He won the Royal Scottish Academy's William Littlejohn Award in 2019 and has exhibited at the Royal Scottish Academy, Arusha Gallery (Edinburgh), and Monya Rowe Gallery (New York).

6.9 UEA Primary PGCE trainee teachers' event

From Tuesday 7 to Thursday 9 January 2020 the Learning Team welcomed 120 UEA students who are currently training to be primary school teachers through the PGCE course. This partnership with the School of Education at UEA is well established and of mutual benefit to both organisations. The students participate in activities to help develop their teaching practice across the curriculum, build confidence to bring children to museums and to use historic buildings and collections in their teaching. Cross-curriculum learning was the main theme of the days, with explorations of history, literature, geography, and art taking place throughout the museum. These training days for all students enrolled on the

course are followed up with a *Take One Picture* 'specialism week' in April for a smaller cohort of students expressing a particular interest in cross-curricular teaching through works of art. This annual programme runs in collaboration with the National Gallery.

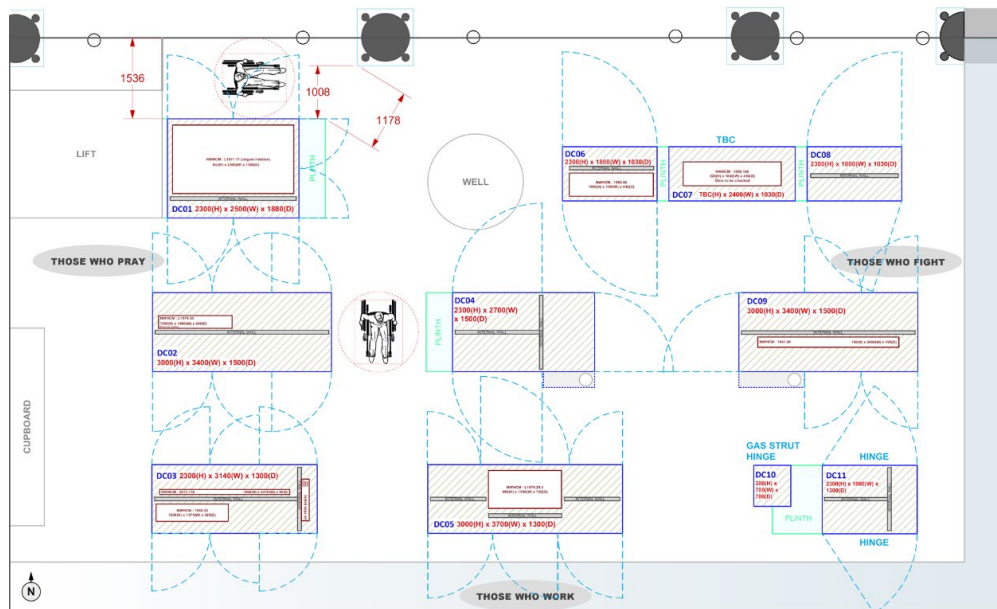
7. Other Developments

7.1 Norwich Castle: Gateway to Medieval England project update

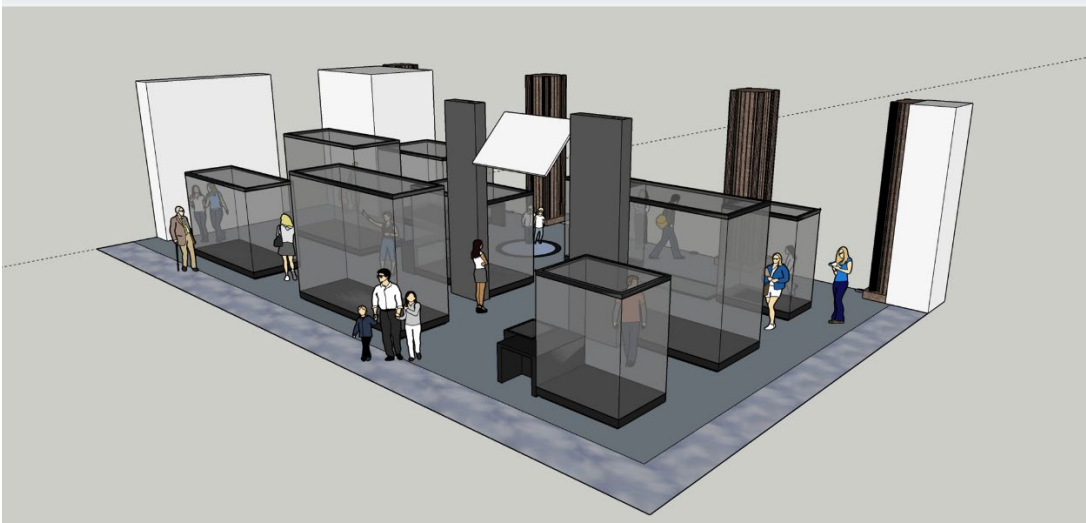
During the period covered by this report, work has been progressing on the *Norwich Castle: Gateway to Medieval England* project. A programme of pre-construction surveys and investigations has continued across the site and will inform the construction programme. The targeted nature of this survey and investigation works has enabled visitor access to be maintained to the Keep, allowing visitors to continue to appreciate the 'clear-view Keep'. An accompanying programme of events is helping visitors make the most of this unique moment in the Keep's history. The Keep has also remained open for schools during this period.

7.1.1 British Museum Partnership Gallery

Detailed planning work continues on the new exhibition galleries, including the finalisation of detailed case specifications and layouts for the new British Museum Partnership Gallery. NMS staff are continuing to work closely with curators and other colleagues from the British Museum and an object loan list is being finalised – currently standing at 59 different objects. The NMS Design & Technical has been working on test designs for case layouts for the British Museum Partnership Gallery cases, based on the current object lists.



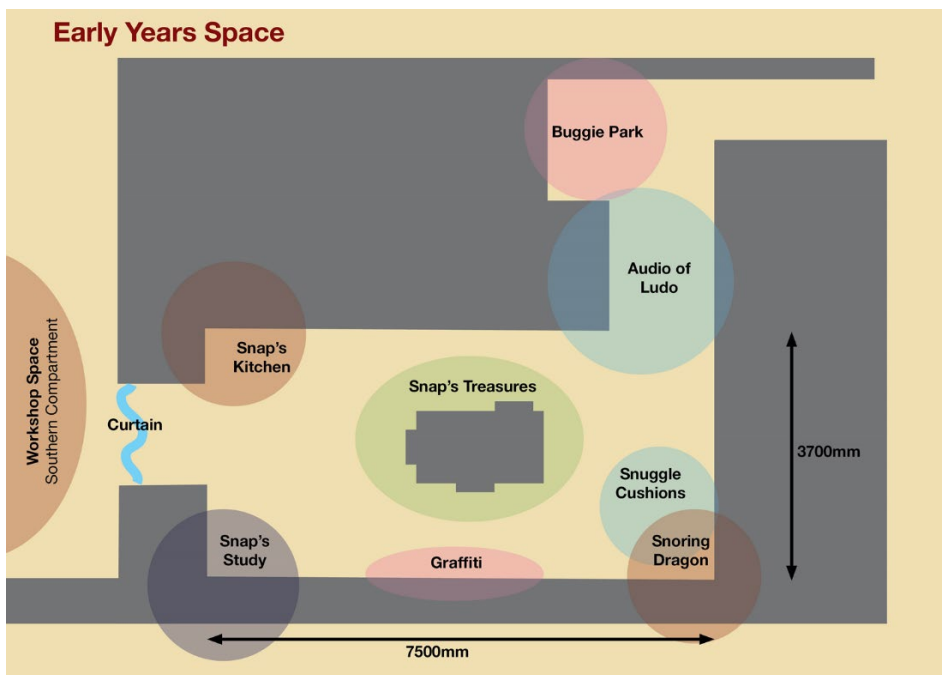
Plan of proposed case layouts for the British Museum Partnership Gallery



Visuals of proposed cases within the British Museum Partnership Gallery

7.1.2 Activity Plan development work

The NMS Learning team continue to deliver the four-year Activity Plan which forms a key part of the project, with a number of events now being run. A broad range of on-site and outreach activities are being developed, including an exhibition about the project that will tour a range of community venues. The *Knight Out* programme will see Norwich Castle go on tour, with pop-up activities being delivered all over Norfolk. Detailed planning work has also been taking place for a new Early Years Gallery that will be the focus for a broad programme of early years activities being delivered through the Activity Plan.



Proposed layout of new Early Years Gallery

As noted in the previous report, the formal launch of the Activity Plan took place on Saturday 5 October 2019 with the contemporary dance performance *Fight or Flight!* performed in the Keep. This inspirational event saw Norwich Castle working with Sadler's Wells National Youth Dance Company; Far From The Norm, an Olivier award-winning hip hop theatre collective; Capoeira Communities; Passion Productions; inclusive dance group In Cahoots; and Knight's Tower Medieval Combat Group, all inspired by exploring the fight or flight response. A film of this performance may now be viewed at: https://www.youtube.com/watch?v=wkHRgNkpw_U



Fight or Flight performance

7.1.3 Norwich Friends Tapestry volunteer group

The Norwich Friends Tapestry Volunteer team continue to meet, with their excellent work recently being highlighted in an EDP article which can be viewed at <https://www.edp24.co.uk/news/norwich-to-get-new-bayeux-tapestry-1-6399105>. Each of the 52-strong volunteer team has their own relationship with the Castle and the Tapestry, and what this work has helped them to achieve.

"I'm a Norwich person and this means a lot to me. I have been coming to the Castle since I was a child and I wanted to be a part of it" Marian Roberts, Tapestry Volunteer.



The speed with which the volunteers work is impressive. Many are already working on or finishing their own individual panels, which will come together to make the 18-metre long piece. Other volunteers are enjoying different challenges, with groups dedicating themselves to medieval costume-making, creating medieval banners for the redeveloped Great Hall and other decorative works. Many volunteers have also been attending the Norfolk Maker' Festival over February 2020, displaying their work and running free skills workshops, helping others to try something new.

The Norwich Friends Tapestry is generously funded by a grant from the Friends of Norwich Museums.

7.2 Wider Impact Group

The Wider Impact Group coordinates all operational issues arising from the delivery of the main Keep project. Work has been continuing in preparation for the construction phase of the project.

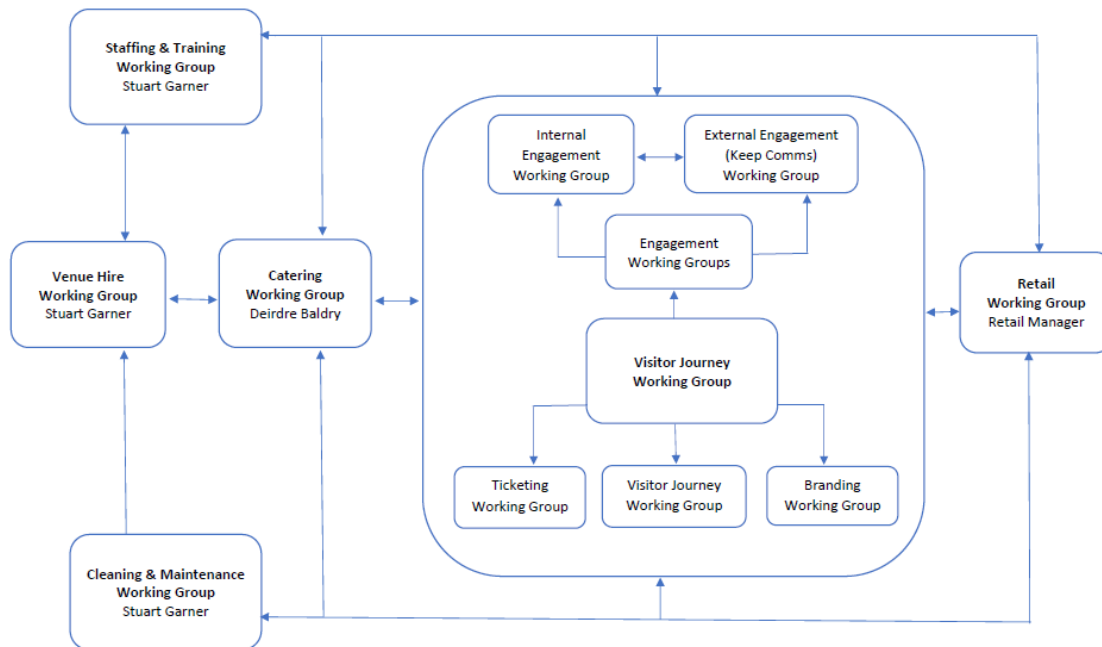
Staff have been working on a plan to manage the logistics of being an open museum alongside a construction site. Aspects of this work includes:

- Identifying hoarding positions
- Managing and maintaining security of the site.
- Managing on-site traffic.
- Safeguarding the public
- Communication and directional signage.

The team have also formed various thematic working groups, exploring all of the different operational elements that need to be considered in advance of the

opening of the redeveloped site. The following organogram shows the different specialist working groups and the way in which they feed in to one another.

Wider Impact Group: Working Groups



7.3 Other events and venue hire

In January Norwich Castle hosted another successful Welcome event for UEA overseas students. This event has now been run on a number of occasions and provides a good opportunity to welcome new students to Norwich, encourage them to get to know one another and get to know the museum and all we have to offer across NMS. All UEA students are entitled to free admission to NMS sites.

In January Norwich Castle hosted the private view for the new exhibition *Deepening*. This was followed up by the private view for the *Spotlight* exhibition in the Timothy Gurney Gallery in February, in partnership with the East Anglia Art Fund. Both events offered a great opportunity to showcase some of the exciting new displays across the museum and celebrate the work of the staff that brought them to life.

7.4 Strangers' Hall – 'Twas the night before Christmas event

On Saturdays from 30 November to 20 December and on Friday 20 December Strangers' Hall transformed into a magical Christmas home, delighting visitors of all ages as they were transported to Christmas past with Clement C Moore's *'Twas the Night before Christmas*.



Visitors were able to take a trail to search for Chris Mouse and friends. As they wandered through the enchanted museum they were able to meet costumed characters, make Christmas crafts, watch period entertainment, make reindeer food, enjoy storytelling and join in with Christmas preparations in the kitchen. And of course, meet Father Christmas and Mrs Christmas, with children receiving a special present.

There were a total of 867 tickets sold for this event.

Feedback from visitors was very positive, with a significant number of return visitors from the previous year, alongside new visitors who were recommended to come and that it was a 'must see'. Most visitors thought that the event was a great experience that the whole family could enjoy, no matter the age, represented good value for money and was not just a quick visit to see Father Christmas.

A selection of social media feedback:



*Absolutely lovely members of staff, both our children LOVED the Christmas experience today & it was lovely to also see my old drama teacher too! 😊👩🏻
We loved the Christmas craft ideas & are even going to do them at home too as the children found them so much fun! 🧑🏻👦*

Honestly couldn't recommend you guys anymore right now! ❤️

Beautiful place and lovely staff x

What a fantastic experience my granddaughter had today visiting the most amazing Santa 🧑🏻👴 and lovely Christmas activities and great entertainment from

the magic man. Can highly recommend, thank Soooo much see you again next year!

8. Visitor Numbers

Detailed visitor numbers will be circulated at the meeting.

Report contact:

Dr Robin Hanley
Assistant Head of Museums
Norfolk Museums Service,
Shirehall,
Market Avenue,
Norwich NR1 3JQ.
Tel: 01603 493663
Email: robin.hanley@norfolk.gov.uk