



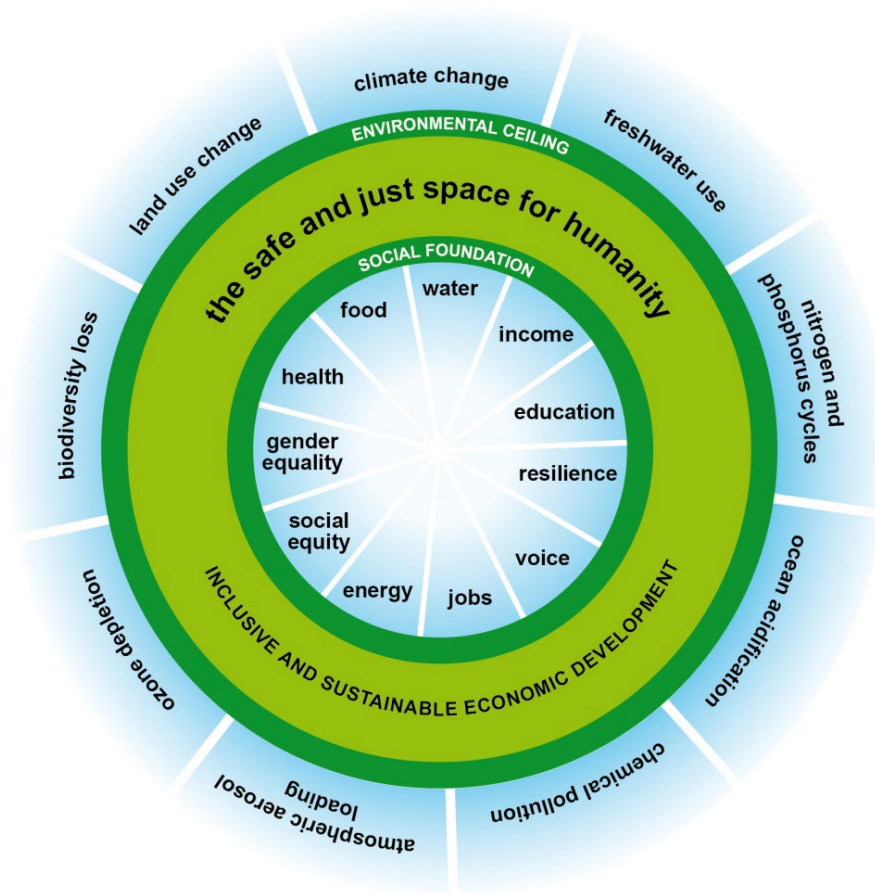
Strategic frameworks

CEEEP February 12th 2020

SUSTAINABILITY



THE DOUGHNUT



POLICY IMPLICATIONS

- “Policies aimed at moving back within planetary boundaries can, if poorly designed, push people further below the social foundation, and vice versa. But well-designed policies can promote both poverty eradication and environmental sustainability – bringing humanity into the doughnut from both sides.”
- “Moving into the safe and just space for humanity means eradicating poverty to bring everyone above the social foundation, and reducing global resource use, to bring it back within planetary boundaries.”



SUSTAINABLE DEVELOPMENT GOALS

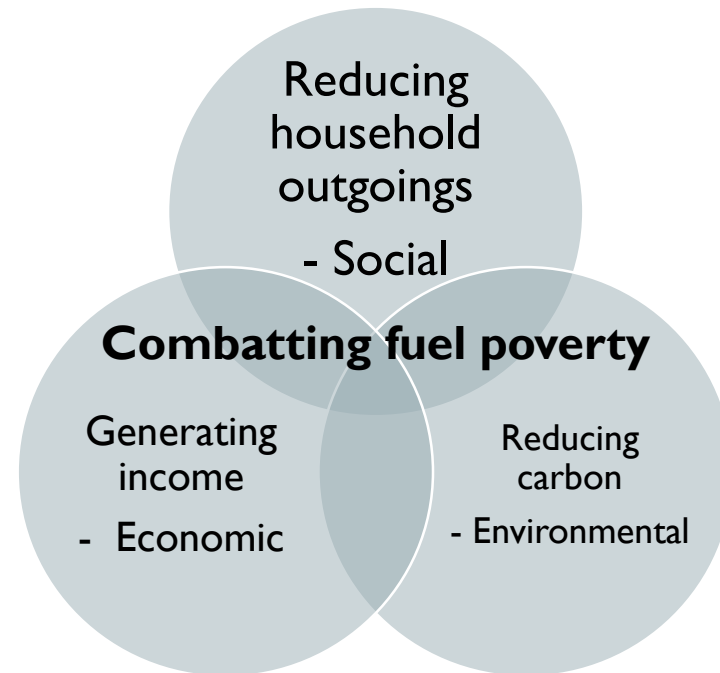
17 GOALS TO TRANSFORM OUR WORLD



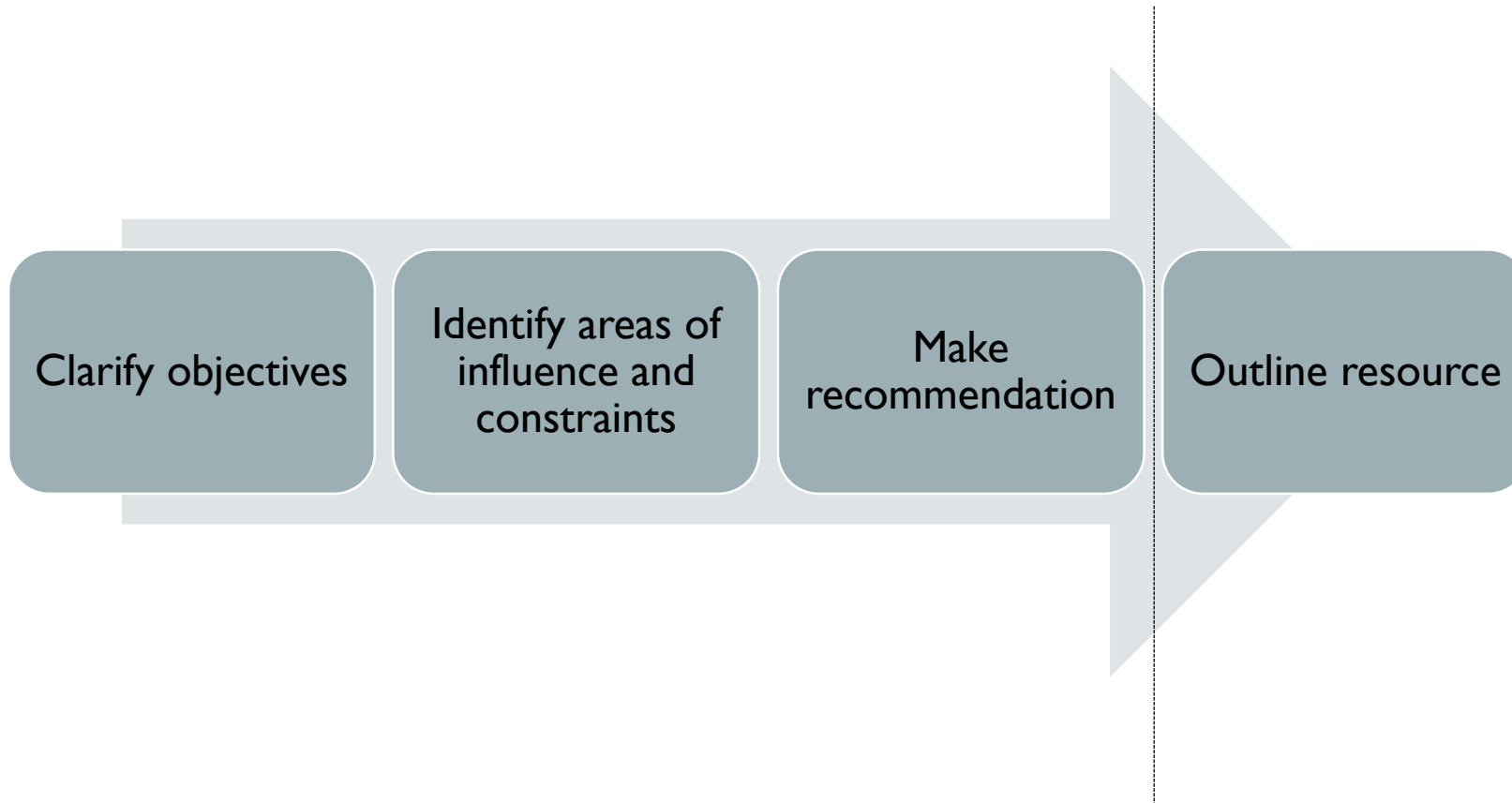
NORWICH CITY COUNCIL POLICY FRAMEWORK



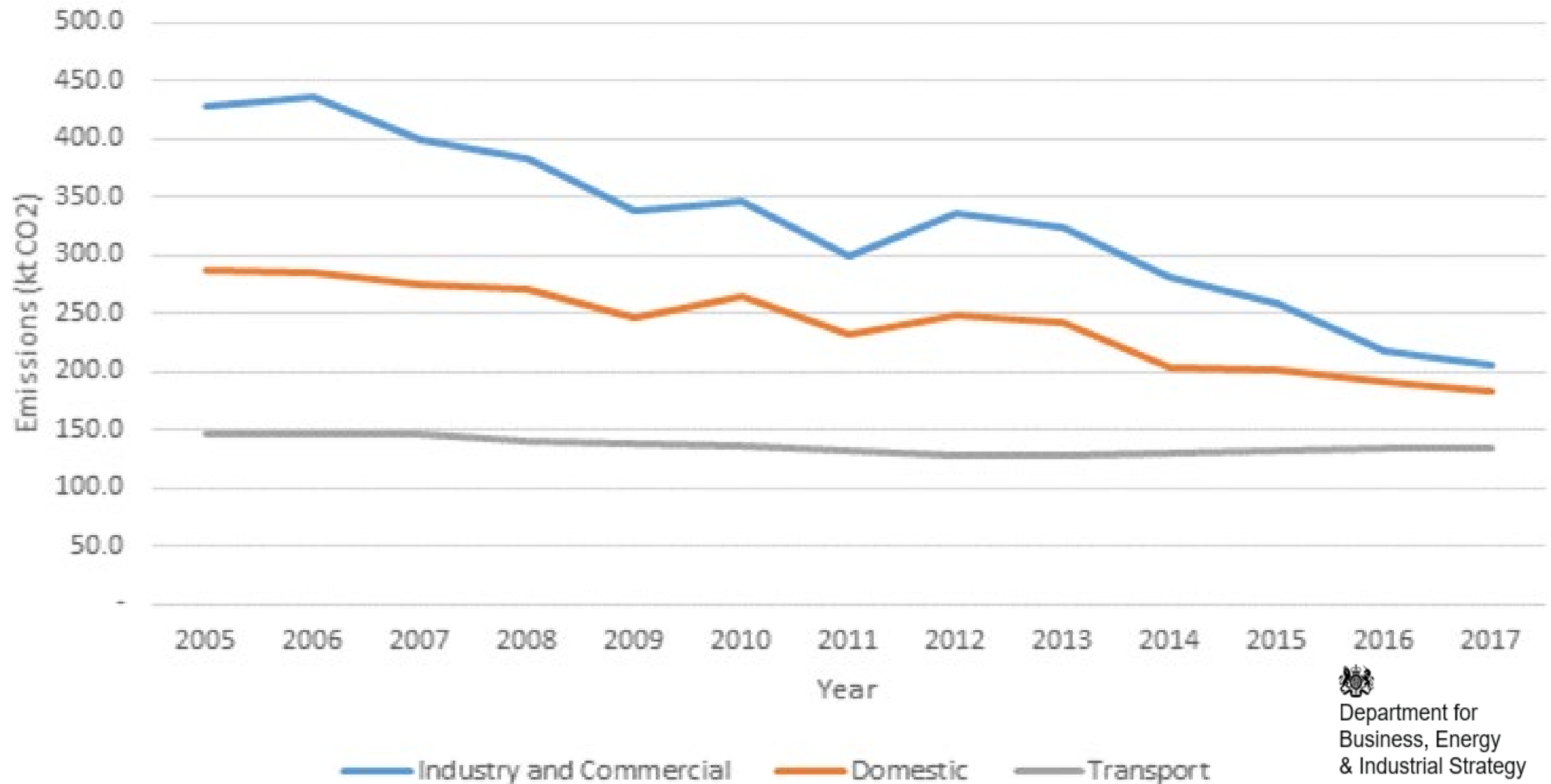
CITY COUNCIL GOOD PRACTICE

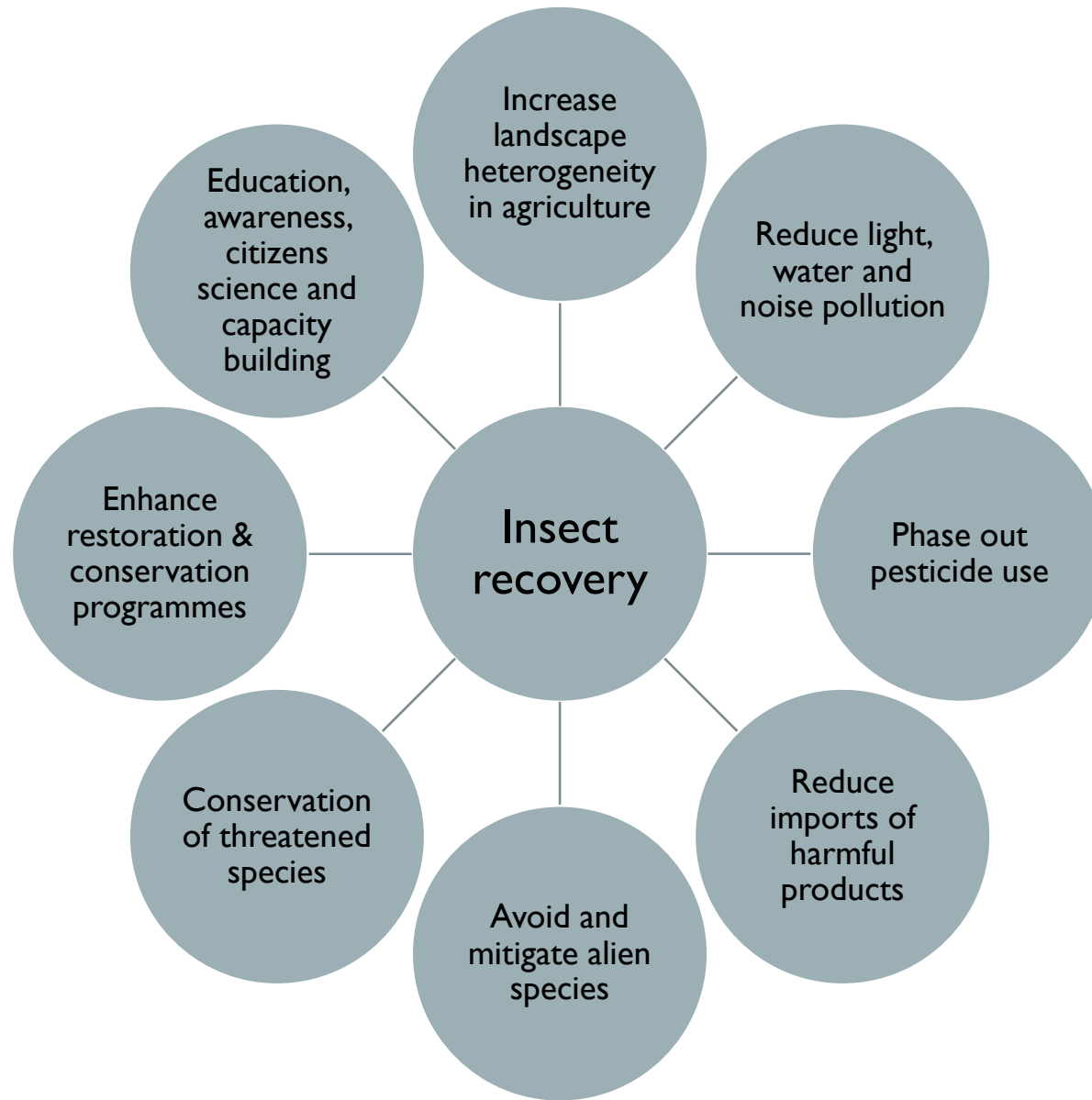


FRAMING RECOMMENDATIONS



Norwich Emissions by Sector





Harvey, J.A., Heinen, R., Armbrrecht, I. et al. International scientists formulate a roadmap for insect conservation and recovery. *Nat Ecol Evol* 4, 174–176 (2020). <https://doi.org/10.1038/s41559-019-1079-8>

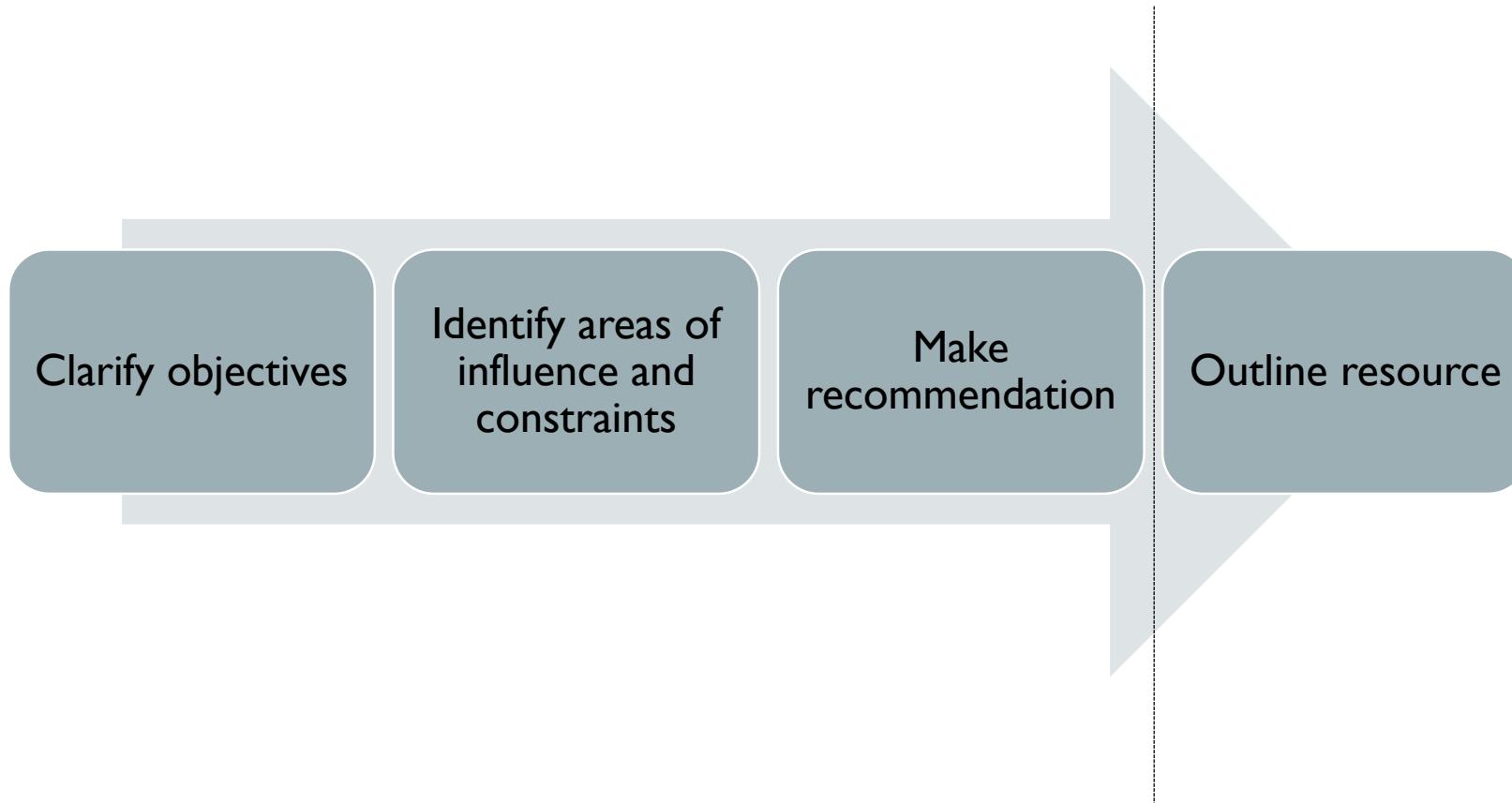
WHAT 'LEVERS' DO WE HAVE?

Approach	Options
Direct delivery	Commencing activities Amending current activities Stopping activities
Enabling	Licensing Regulating Incentivising Coproducing Supporting / funding Contracting and procurement
Influencing	Communicating Using relationships Lobbying

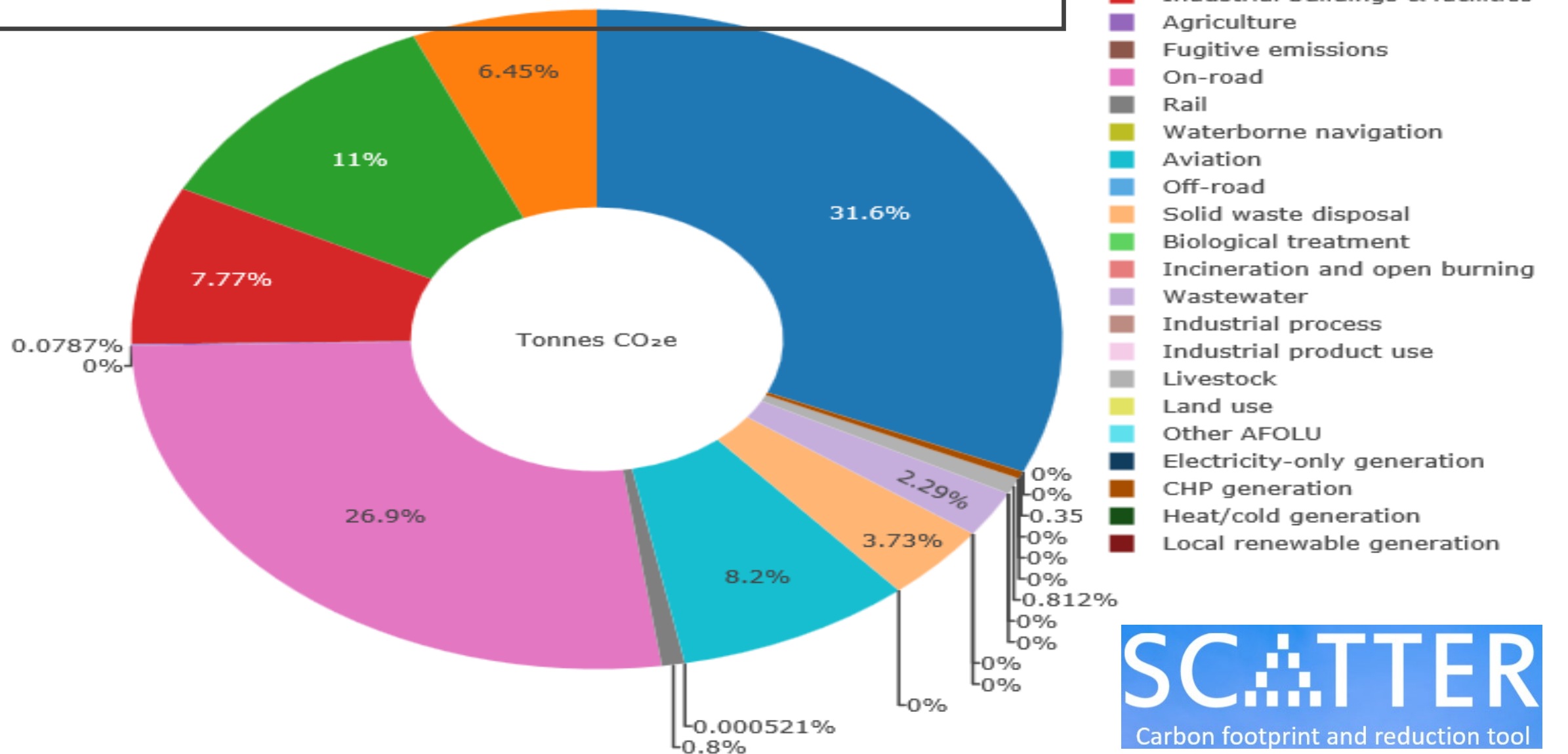
RECOMMENDATION EXERCISE

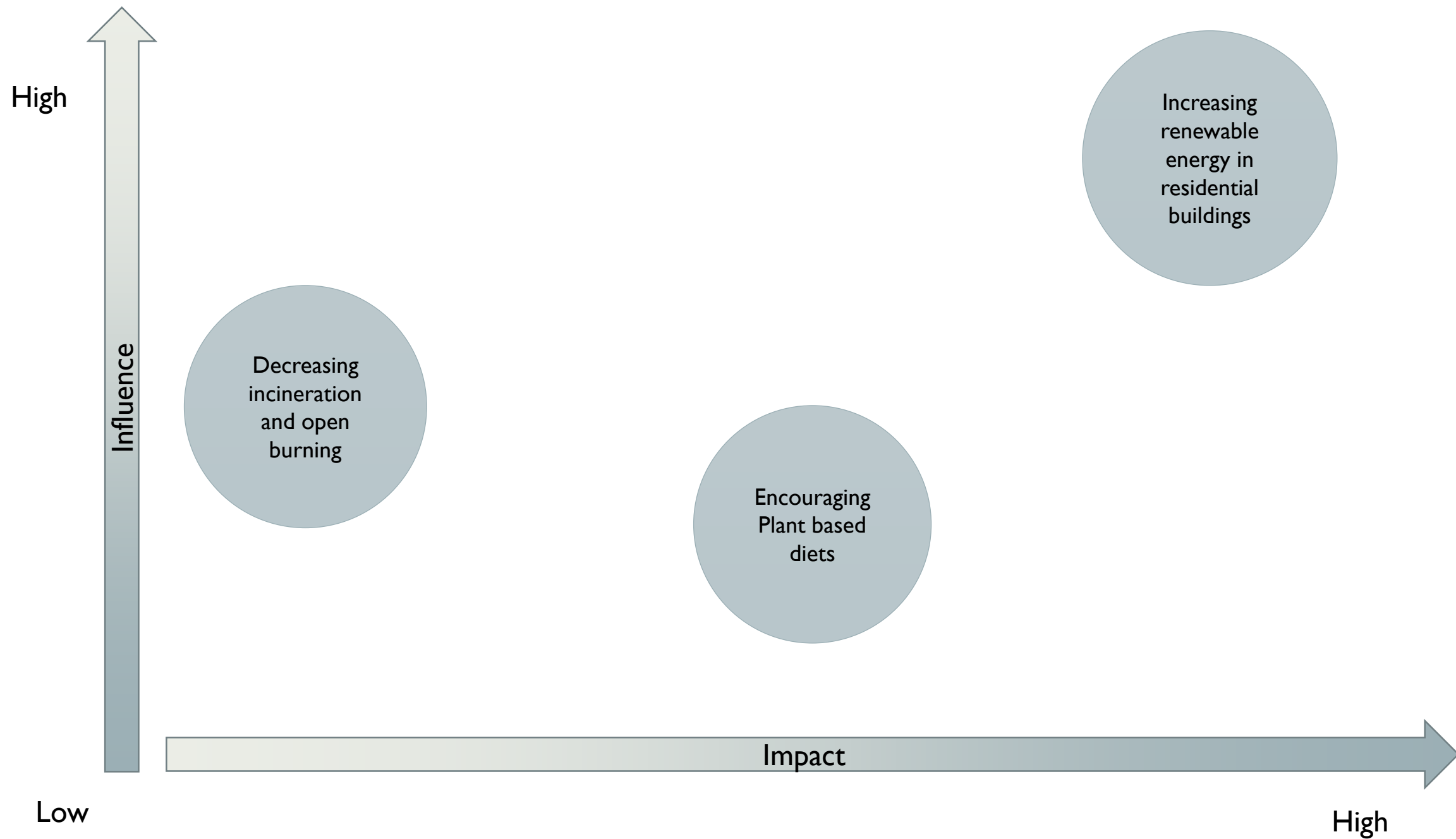
- What are you proposing to do?
- How will it be resourced?
- What could be the risks?
- What are the constraints?
- Unintended consequences?
- How will it be measured?
- How will it reflect the 3 pillars of sustainability (economic, social and environmental)?

FRAMING RECOMMENDATIONS



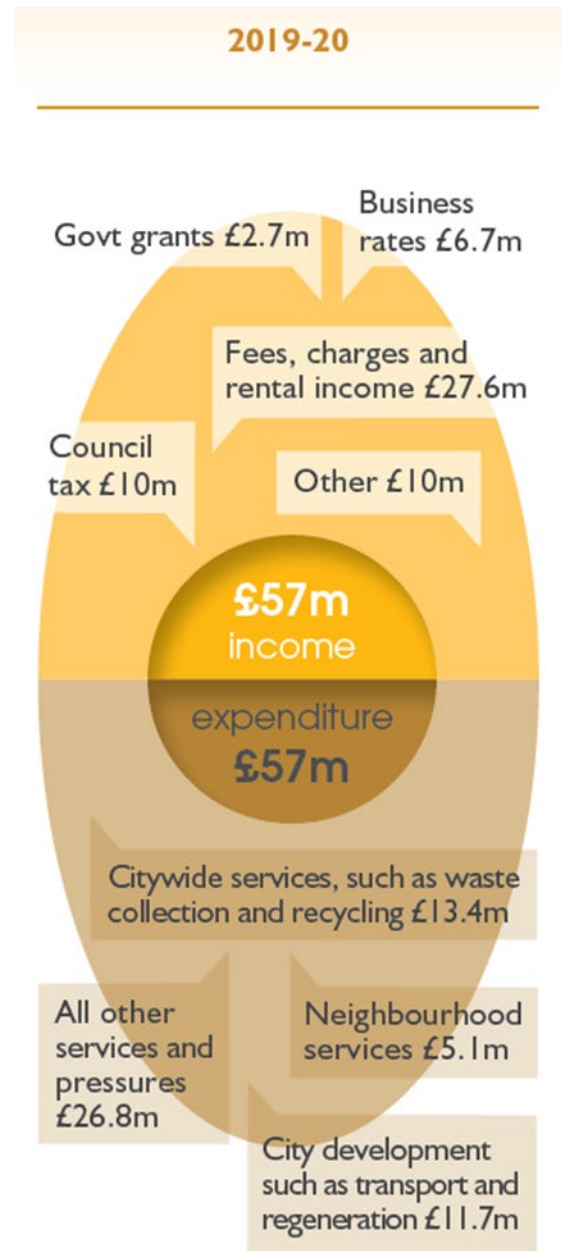
TOTAL: 738,161.95 TCO₂E






WHAT CAN WE USE?

- Enforcement
- Incentives (Financial/reputational) e.g.
 - Scale for stamp duty in regards to energy performance
 - Council Tax reductions
 - Accreditation scheme
- Encourage people (civic leaders)
- Resourcing:
 - Government energy efficiency programmes
 - Local authority channel investment (Social/Environmental Impact bonds, loans) = to be paid back
 - Own resource (i.e. free up resource by stopping some things and redirecting towards housing)



Grade C or Better Retrofit

- Solid wall Internal: £295 Million
- Solid Wall External £511 Million
- Solar PV £134 million
- Battery £230 million
- Heat Pumps £538 million
- Energiesprong £1.5 billion



	Count	Percent
(92-100) A	0	0%
(81-91) B	122	<1%
(69-80) C	4,281	10%
(55-68) D	13,726	32%
(39-54) E	18,846	44%
(21-38) F	5,424	13%
(1-20) G	478	1%

RECOMMENDATIONS

