

Norwich area museums committee

Date: **Tuesday, 05 June 2018**
Time: **14:00**
Venue: **Norwich Castle**

For further information please contact:

Committee members:

Committee officer: Jackie Rodger
t: (01603) 212033
e: jackierodger@norwich.gov.uk

Norwich City Council:

Councillors Bradford, Fulton-McAlister (E),
Huntley, Maxwell, Price and Trevor

Norfolk County Council:

Councillors Clipsham, Jones (B), Nobbs,
Rumsby, Ward and Watkins

Democratic services
City Hall
Norwich
NR2 1NH

Co-opted non-voting members:

Brenda Ferris (Norfolk Contemporary Art
Society), Amanda Geitner (East Anglia Arts
Fund) and Felicity Devonshire (Friends of the
Norwich Museums) and Councillor Hardy
(South Norfolk Council)

www.norwich.gov.uk

Ex-officio member: Councillor Buck

**Refreshments for members of the committee will be available in the
Castle Rotunda from 13:30**

Information for members of the public

Members of the public and the media have the right to attend meetings of full council, the cabinet and committees except where confidential information or exempt information is likely to be disclosed, and the meeting is therefore held in private.

For information about attending or speaking at meetings, please contact the committee officer above or refer to the council's website.

Agenda

Page nos

1 Appointment of chair

To elect a chair for the ensuing civic year

2 Appointment of vice chair

To elect a vice chair for the ensuing civic year

3 Public questions/petitions

To receive questions / petitions from the public

Please note that all questions must be received by the committee officer detailed on the front of the agenda by **10am on Thursday, 31 May 2018.**

Petitions must be received must be received by the committee officer detailed on the front of the agenda by **10am on Monday, 4 June 2018.**

For guidance on submitting public questions or petitions please see appendix 1 of the council's constitution.

4 Apologies

To receive apologies for absence

5 Declarations of interest

(Please note that it is the responsibility of individual members to declare an interest prior to the item if they arrive late for the meeting)

6 Minutes

5 - 10

To approve the accuracy of the minutes of the meeting held on 6 March 2018

7 Norwich Museums Briefing March to May 2018 11 - 26

To receive the report on the activities of the Norwich museums for the period March to May 2018, including:

- Illustrated presentation on the Samson Project by Jenny Caynes, Curator of the Community of History at the Museum of Norwich;
- Update on the Keep project.

8 The Friends of the Norwich Museums - Update 27 - 28

To receive the report on the activities of The Friends of
Norwich Museums

Date of publication: **Friday, 25 May 2018**



MINUTES

Norwich Area Museums Committee

14:00 to 15:40

6 March 2018

Present:

City Councillors:	County Councillors:
Brociek-Coulton (chair)	Nobbs (vice chair, in the chair)
Bradford	Clipsham,
Herries	Jones (B)
Jones (T)	Rumsby
Maxwell	Watkins
Price	

Co-opted non-voting members:

Felicity Devonshire (Friends of Norwich Museums), Brenda Ferris (Norfolk Contemporary Art Society) and County Councillor Buck (vice-chairman, Norfolk Joint Museums committee) (ex officio member)

Apologies: County Councillor Ward (other council business) and co-opted non-voting member Amanda Geitner (East Anglia Arts Fund)

1. Friends of Norwich Museums

The chair welcomed Felicity Devonshire, the newly appointed representative of the Friends of Norwich Museums, to her first meeting of the committee.

The chair and members of the committee took the opportunity to express their gratitude for the contribution that Ceri Lamb had made over the several years that she had represented the Friends of Norwich Museums on the committee. The chair would write to her to express the committee's gratitude.

2. Public questions/petitions

There were no public questions or petitions.

3. Declarations of interest

None.

4. Minutes

RESOLVED to agree the accuracy of the minutes of the meeting held on 12 December 2017. .

5. Update on Magritte Discoveries

Dr Georgia Bottinelli, Curator of Historic Art, gave a presentation on the discovery of the fourth and final part of René Magritte's lost masterpiece *La Pose Enchantée (The Enchanted Pose)* in Brussels.

In reply to a question, the curator said that artist's often reused canvases to save money. However it was unusual for a painting that had been exhibited to be cut up for other paintings. Magritte might have done this for a number of reasons, such as the painting had been damaged, that the painting was too large and could not be sold or that his style had changed and he needed the canvas for other works. Members were advised that *The Human Condition* was now "beautiful and vibrant" since it had been cleaned prior to its exhibition in Paris.

Brenda Ferris advised the committee that *The Human Condition* was one of the paintings that comprised Lady Jane Adeane's bequest to the precursor of the East Anglia Art Foundation, when a Norwich Tate was envisaged. The painting was now on permanent loan to Norwich Castle and Art Gallery. Sir Robert Adeane had been a keen collector of contemporary paintings. Both he and Lady Adeane had connections with East Anglia and wanted the paintings to be on display to the public. Paintings from the Adeane collection had also been bequeathed to the Fitzwilliam Museum in Cambridge.

The head of operations and learning said that there would be a small exhibition to update visitors to Norwich Castle of the discovery of the final part of *The Enchanted Pose*.

RESOLVED to thank Dr Georgia Bottinelli for her presentation.

6. Norwich Museums Briefing: December 2017 to February 2018

The head of operations and learning referred to the adverse weather conditions and explained that it had been necessary to close the museums on 28 February 2018 and in order to reopen Norwich Castle the following day, deploy members of staff from the Museum of Norwich. Members of staff had shown great commitment by clearing the bridge of snow and ice. All of the Norwich museums were re-opened by the weekend. It had been necessary to postpone some out-of-hours events. A wedding ceremony had gone ahead on 28 February 2018.

The head of operations and learning then presented the report and answered members' questions.

In reply to a question about the importance of exhibitions such as the *Rembrandt: Lighting the Darkness* and the newly opened *The Square Box on the Hill*, the head of operations and learning confirmed that the learning team was involved at an early stage in the development of all exhibitions. This was not only to promote school visits, but also to develop activities to encourage families and target early years, pre-school children.

Members were advised to view the Norwich Castle; Open Art Show: Inheritance (3 March to 20 May 2018) which was delivered in partnership with the East Anglia Art Fund, and provided artists resident in East Anglia the opportunity to show and sell

recent work. The theme complimented the *Norwich Castle: Gateway to Medieval England Project* and *The Square Box on the Hill* exhibition.

Members also noted that Dr Francesca Vanke, keeper of art and curator of decorative art at Norwich Castle, had contributed to the catalogue which supported *The Paston Treasure: Riches and Rarities of the Known World* currently on exhibition at the Yale Center for British Art, Connecticut and at Norwich Castle (23 June to 23 September 2018).

The committee noted that the *Armistice: Legacy of the Great War* centenary exhibition (20 October 2018 to January 2018) had been supported by the Heritage Lottery Fund, and other funding partners, including the Town Close Estate charity and the Norfolk Regimental Museum Trustees. In reply to a question, the head of operations and learning said that he would ask the curator as to whether the exhibition would include references to the Russian Civil War. He pointed out that there would also be a mobile exhibition.

The committee noted that 3,600 visitors had attended the *Winter Wildlife Weekend* (20 to 21 January 2018) at Norwich Castle, and that the increase in visitor numbers, which had been 800 in previous years, was attributed to the use of social media, especially Facebook. Norfolk Museums Service (NMS) was aware of the potential of social media.

The committee noted that Strangers' Hall had closed between Christmas and New Year and that 21 volunteers, comprising NMS staff on their days off, regular volunteers and volunteers who worked at Aviva, had carried out the annual deep clean.

Members of the committee were interested in the Museum of Norwich at the Bridewell's crowdfunding campaign to display the recently renovated Samson figure and welcomed the generous donation from The Friends of Norwich Museums. Following discussion it was agreed that, as members had a great deal of interest in this project, there would be a detailed presentation at the next meeting of the committee.

During discussion a member said that as a child she remembered the toy display in the Keep and hoped that there would be a display of toys at Norwich Castle as it was a good advertisement for Strangers Hall. The head of operations and learning said that it was planned that a bid will be submitted to the Heritage Lottery Fund to improve the display of toys at Strangers' Hall and increase access to the wonderful collection. At Norwich Castle, the Keep project would ensure that there was a focus on early years' children and would create specific areas of interest for families with pre-school children.

The committee noted the work and activities of the learning team which included the *Childminders Day at Norwich Castle*. A member suggested that given the importance of working with early years children, childminders could be shown how to use handling boxes effectively. The head of operations and learning said that there had been some work around this and he would support the development of this proposal as there was more demand for outreach than NMS staff could provide.

Discussion ensued on the work of NMS with the Youth Offending Team and it was noted that the museums provided a neutral venue for young people who were then able to open up in conversation with their support workers. A member pointed out that this had beneficial outcomes for the young people. Members also noted that if the bid was successful, the four year programme *Kick the Dust* would benefit hard to reach young people.

The committee noted that the school library van *Learnalot* was used at events but there was concern that the service might not be sustainable in the long term.

In the absence of the operations manager, the head of operations and learning presented the *Other Developments* section of the report. In reply to a question from a member, he confirmed that there had been 600 weddings in the Wedding Room at Norwich Castle this year and that it was busiest in the summer months with several weddings a day.

Discussion ensued on the external lift improvements and members were advised that a temporary improvement had been achieved by the works to the lift last year but the mechanism and lift carriage needed to be replaced. The project would also include refurbishment of both entrances to the lift and improved signage and interpretation. The works were currently under procurement.

In reply to a question, the head of operations and learning, advised the committee that the first placement under the Opportunities in Work and Learning scheme had commenced in January 2018. NMS in partnership with adult social services was supporting young people over 18 in receipt of a personalised budget in work based placements to gain experience which would assist them in securing paid employment.

The head of operations and learning, in reply to a question, said that the case to the city council's civic regalia had been water damaged following a heavy storm. The silver had therefore been removed for safe keeping and was currently in the fine art store. It was not cost effective to replace the water-damaged case because all the display cases in the Keep would be removed as part of the Keep Project. Curators were liaising with the city council about the future arrangements for the display of the civic regalia.

The committee then viewed the visitor numbers which were circulated at the meeting. Members noted that the number of visitors were down in February, due in part to the poor weather during half term holiday. The fluctuations in monthly figures, compared from one year to the next, were also due to where school holidays fell and to the change-over period from between exhibitions. Overall visitor numbers were very strong and exceeded targets and this was attributed to the success of the major exhibitions. School visits were also doing well. Discussion ensued on how targets were reviewed. The head of operations and learning said that when targets were set for the next year following discussion with the council's statisticians. Members expressed their gratitude that the Town Close Charity would fund the free days at the Museum of Norwich at the Bridewell and Strangers' Hall again this year. The committee noted that over the whole service visitor numbers to museums were doing well.

A member pointed out that over half of all visits were to Norwich Castle and asked how the Keep Project would affect the service. The head of operations and learning said that it was anticipated that Norwich Castle would remain open throughout the development and that the scheduled Viking exhibition would be popular as it had previously seen very strong visitor numbers when displayed at Nottingham and York.

Tim Pestell, curator, provided a brief update on the progress of the Keep project. The project was moving forward to a tight deadline in accordance with the business plans. The project was 93% funded and would become eligible for further funding as the third stage was completed.

The curator invited members to view the archaeological works which were currently being undertaken in the basement. He explained that a metric survey had been taken of the castle which was an exact measurement of the building stone by stone and had shown a discrepancy of 60 cm on previous surveys. The archaeological survey was taking place in the north east and south west quadrants and would be around the internal lift shaft which would be replaced. There had been previous surveys in 1986 and the 70s and together with this survey would provide a better idea of the stratigraphy of the building. It would be necessary to use a crane to move materials on to the site because of the weight limit on the bridge and to protect areas of the mound. The archaeological works would also facilitate structural samples being taken through the depth of the mound. There had been some burials of prisoners in the vicinity of the castle. The project would also ensure that the wall to the Great Hall, dating back to Edward I, would be fully excavated and documented.

The curator then spoke of the collections that would be displayed as part of the Keep project. The British Museum would be loaning 100 objects to Norwich Castle. Norwich was mentioned in early texts as being a diverse community. It was important to tell the story of medieval Norwich and its relationship with the Jewish community and other faiths using objects from The British Museum's rich collection.

During discussion, a member asked whether there were skilled craftspeople, such as stone masons, who could carry out the work. The curator confirmed that there were sufficient stone masons with the required skills to carry out the work. He explained that the works to the Keep were not to provide a replica but an interpretation of a Norman great hall.

RESOLVED to:

- (1) note the report;
- (2) ask the head of operations and learning to investigate whether the Russian Civil War will be included in the "Legacy of the Great War" exhibition;
- (3) record the committee's gratitude to the members of staff and volunteers who conducted the annual deep clean at Strangers' Hall;
- (4) ask the head of operations and learning to invite Jenny Caynes, curator of community history at the Museum of Norwich at the Bridewell, to the next meeting to give a presentation on the Save Samson campaign and provide details of the background to the project;

- (5) record the committee's gratitude to the learning team for its contribution to the museums services and to ask the head of operations to explore whether the suggestion that childminders are trained to use handling boxes can be facilitated;
- (6) note the progress of the Keep project and that members of the committee are invited to view the archaeological works following the end of the meeting.

7. Friends of Norwich Museums report

Felicity Devonshire presented the report which updated members on the activities of the Friends of Norwich Museums (FNM).

She added that the FNM were very pleased to be able to support the Save Samson campaign and that its contribution would provide a digital interpretation of the display at the Museum of Norwich at the Bridewell. The FNM was also committed to support the Keep project.

Members were advised that the FNM hosted monthly talks and that the next one would be on 29 March at 14:30 given by Clive Slater, research associate, NMS, *Searching for Birds' Names in Honour of John Henry Gurney* and that further details could be found on its website.

During discussion a member said that the proposal to update the CD depicting 90 objects given by the group to the NMS over the years to 100 objects to celebrate its 100th anniversary in 2021, was an excellent one. Felicity Devonshire said that she would ensure that the committee was updated with the proposals for the FNM'S celebrations of the anniversary.

Felicity Devonshire said that looking forward the FNM would like to be more involved with the work of the learning team and the Kick the Dust project. The head operations and learning said that the Friends of the Kings Lynn Museums had launched a scheme to encourage younger members.

RESOLVED to thank Felicity Devonshire for her report.

8. Norfolk Contemporary Art Society

Brenda Ferris said that the Norfolk Contemporary Art Society had a busy schedule of events planned for the year. She advised members that Martin Blackwell, Norwich Bid, would be giving a talk *The Importance of Public Art* at the Forum that evening.

(The Norfolk Contemporary Art Society spring programme is available on its website: http://www.n-cas.org.uk/uploads/cms/file/ncas_spring_2018_web.pdf)

RESOLVED to thank Brenda Ferris for her report.

CHAIR

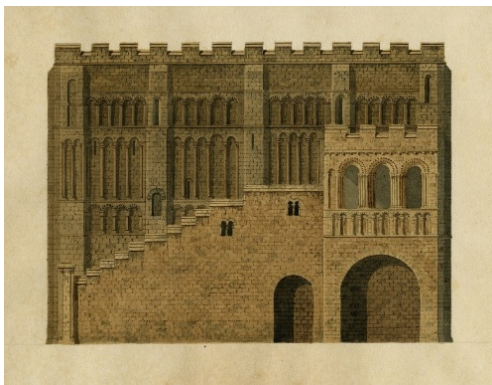
Norwich Area Museums Committee 5 June 2018
Norwich Museums briefing: March to May 2018

1. Exhibitions at Norwich Castle

1.1 The Square Box on the Hill (10 February – 3 June 2018)

Norwich Castle has dominated the City's skyline since the 12th century, but what is the story of this iconic and much-loved building? Built as a royal palace, Norwich Castle was a Norman showpiece with lavishly decorated interiors fit for a king. By the 14th century, it had become the County gaol confining Norfolk's prisoners within its walls. With the opening of the new prison at the end of the 19th century, the Castle's fate was uncertain, until its conversion into the museum, which it remains to this day.

The Square Box on the Hill exhibition explores the history of Norwich's iconic and Norman keep. Featuring never-before seen archives and artefacts from Norwich Castle's 900-year history, including a wealth of new research uncovered by the *Norwich Castle: Gateway to Medieval England* project to transform the Keep, the exhibition shows this majestic landmark in a new light. *The Square Box on the Hill* illustrates the Castle's rich history, from Norman showpiece palace to county gaol to museum, through a stunning mixture of prints, models, paintings, architectural plans and memorabilia, many of which have never been on display before. Supported by headline sponsors Brown&Co, the exhibition also showcases the latest exciting plans for the Castle's future as part of the *Norwich Castle: Gateway to Medieval England* project supported by the Heritage Lottery Fund. Along this fascinating journey, visitors come across many surprises which the Castle has housed over the years, from a Japanese Samurai suit of armour to a 1970s draught bitter; from fine medieval jewellery to graffiti etched in stone. Visitors even have the chance to literally walk back in time as pass through the revolving doors which stood at the Castle entrance for many years. Items such as an early museum attendant's uniform and the original ticket machine also prompt memories.

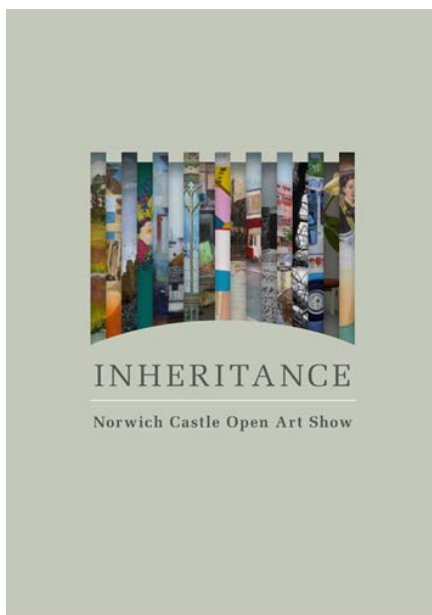


William Wilkins (attrib.) Norwich Castle 1795 ©Norfolk Museums Service

1.2 Norwich Castle Open Art Show: Inheritance (3 March – 20 May 2018)

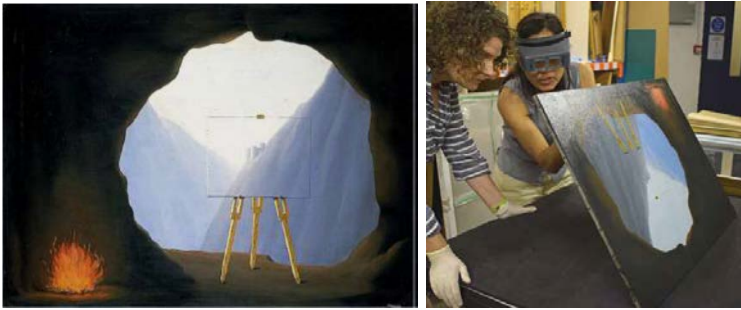
Inheritance: Norwich Castle Open Art Show is the fifth open art show at the Castle. Organised in collaboration with the East Anglia Art Fund, it presents a wonderful snapshot of contemporary artistic talent from across the region. With a record-breaking entry of over 900 works, the panel of distinguished judges Penelope Hughes-Stanton (Director of North House Gallery, Manningtree); Sandy Heslop (Professor of Visual Arts, University of East Anglia) and Lloyd De Beer (The Ferguson Curator of Medieval Europe, The British Museum) had a challenging task shortlisting the entries down to 129 works. The result is an engaging, colourful and surprising show which demonstrates a wide-ranging response to the theme of Inheritance. This theme was chosen to complement *The Square Box on the Hill* exhibition and the range of interpretations is fascinating—from spectacular images of the region's renowned land and seascapes to detailed observations of spaces neglected and overlooked. Fantastical imaginings of the world around us are displayed alongside more abstract interpretations of the past. Those who have left their mark are shown in loving portraits as well as by the traces that remain in ancient pathways, churches and military installations.

Inheritance is supported by headline sponsors Brown&Co and Gallery in the Lanes. Alongside their sponsorship, both companies provided generous artist prizes for their favourite works in the show. Brown&Co chose to award the exhibition prize to James Gladwell for his beautiful and intricate textile 'The Farm' created using the sewing skills passed on to him by his grandmother, while also touching on his Romany heritage. Gallery in the Lanes awarded Mark Mann's monumental bronze sculpture *Acts of Gross Indecency* the prize for an Emerging Artist. Norfolk-based artist Mark's stunning bronze sculpture was created as a monument to the experiences of gay men and marked the 50th year anniversary of the decriminalisation of homosexuality.



1.3 Colman Gallery temporary displays

The current extended exhibition in the Colman Project Space is *Magritte: The Lost Painting*. This explores the story of the detective work recently undertaken on NMS' Magritte painting *La Condition Humaine*, where a quarter of a missing Magritte painting, *La Pose Enchantée* was discovered underneath the later work.



La Condition Humaine by Rene Magritte

1.4 We Came Here to Conquer: Eleven artists respond to the print collections at Norwich Castle (Timothy Gurney Gallery - March 2018)

This exhibition formed part of the 3 year *New Geographies* project funded by Arts Council England which saw NMS working in collaboration with nine arts organisations across the region. This exhibition showcased new work by eleven artists involved with print and printmaking, each of whom explored and responded to the print collections at Norwich Castle. For more information about the project please see: www.newgeographies.uk

2. Forthcoming exhibitions

2.1. The Paston Treasure: Riches and Rarities of the Known World (23 June – 23 September 2018)

This major exhibition in collaboration with the Yale Center for British Art reunites, for the first time in three centuries, rare 17th century works of art and objects originally featured in the mysterious painting *The Paston Treasure*. Painted by an unknown Dutch school artist, circa 1663, the painting's unique and cryptic subject continues to mesmerize and puzzle art scholars and historians. Featuring an array of exotic treasures from around the world, as well as animals and people, the painting chronicles a fraction of what was once one of the greatest private art collections of 17th century England, amassed by Norfolk's Paston family, famed for their medieval letters.

The result of an intensive 10-year research project, *The Paston Treasure: Riches and Rarities of the Known World* sets out to explore the history of the Paston family and how they acquired and lost one of the most distinguished art

collections in seventeenth century Britain. It also examines the puzzle of the painting and its anonymous artist, and finally the history of the beautiful Oxnead Hall, of which only a part still stands today. Supported by the East Anglia Art Fund, the exhibition is divided into thematic sections, which are explained and illustrated by relevant objects, paintings and artefacts, the majority of which have been loaned from distinguished national and international public and private collections. Prestigious international lenders to the exhibition include the Metropolitan Museum of Art, New York, the Rijksmuseum, Amsterdam, Chicago Institute of Art, the Victoria and Albert Museum, the Royal Collection and many others. Collectively the exhibition tells both a very Norfolk story and a genuinely international one.



Anonymous, Dutch School, *The Paston Treasure* c.1665 ©Norfolk Museums Service

2.2. Armistice: Legacy of the Great War (20 October 2018-January 2019)

Supported by the Heritage Lottery Fund and other funding partners including the Town Close Estate Charity and the Norfolk Regimental Museum Trustees, this major centenary exhibition will explore the First World War in Norwich and Norfolk, showing the physical impact on the county, coastal defences and changes in agriculture and industry, alongside stories of the communities and individuals whose lives were transformed by the War.

3. Norwich Castle Events

3.1 Easter Visitor Programme at Norwich Castle – Castle CSI (Crime Scene Investigation)

The Easter holiday theme at Norwich Castle was a new one for 2018, in the form of *Castle CSI*. Using the prison stories as inspiration, the NMS Learning Team developed a range of activities exploring phrenology and the use of death heads, drawing out the 19th century belief that criminal tendencies could be determined by the shape of the head. Visitors were able to become Castle Crime Scene Investigators, explore crime and punishment from medieval to modern times, follow a Crime Trail, sit in judgement with Judge Childers and explore the prisoners' secret tunnel to visit the dungeons. The theme appealed particularly to older children, a group that previous themes had engaged less. The programme was well received, with good levels of visitor numbers.



3.2. ST*ART Art Club for 8-12 years at Norwich Castle

The NMS Learning Team have recently concluded the latest ST*ART course entitled *ST*ART 3D*, led by artist Ali Atkins and a team of dedicated volunteers. Over 93% of participants rated *ST*ART 3D* as 'Excellent' with the remaining feedback rating it as 'Very Good'.

*'ST*ART is amazing and if I can I will do it again. I would recommend it to anyone!'*



ST*ART is a termly programme comprising five Saturday morning sessions run by local artist Ali Atkins. The programme was established by the NMS Learning Team in 2015 in response to limited art provision for 8-12 year olds in the city. Each term the programme focuses on either drawing, painting or 3D. The programme aims to inspire and support creativity and foster interest in a career in the arts. As well as acquiring and developing technical skills, knowledge and understanding, it is intended that participants enjoy the power of play and also develop their imaginations.

A number of previous participants are planning to go to Art School and pursue creative fields. As a result of this, staff have reviewed how ST*ART can be part of a 'pathway' to HE and have put a number of progression steps in place. Junior ST*ART Masterclasses have been initiated, including the recent Karl Foster led workshop *Drawing on the Lines of Rembrandt*, which produced some outstanding work. Norwich University of the Arts (NUA) are now a strategic partner for the programme and will add the following enrichment to the ST*ART offer: using the NUA logo on the certificate and a member of NUA staff presenting the certificates at the end of course event (3 times a year); inviting participants to attend the NUA BA Degree show with their family; inviting participants to come and see NUA students at work; a volunteering opportunity for NUA students to support the course.

The Learning Team intends to strengthen the links with educational institutions, to make clear the importance of the creative economy and underline the value of the arts in physical and mental wellbeing. ST*ART is funded by East Anglian Art

Fund with the support of the Norwich Freeman's Charity (formerly the Norwich Town Close Estate Charity). There are two funded places on each course for disadvantaged children.

3.3. Museums at Night – Saturday 19 May

Norwich Castle opened free to visitors between 5pm and 9.30pm as part of the national Museums at Night campaign. Visitors were able to meet the Black Knight and his friends, enrol in the Sword School and explore the secrets of the Castle in a candlelight trail. The evening was supplemented by music, tours, activities and crafts.

4. Strangers' Hall

4.1 Britain's Most Historic Towns TV series filming

Strangers' Hall featured on the Channel Four documentary *Norwich - Britain's most Tudor Town*, presented by Dr Alice Roberts. Curator Cathy Terry spoke about the Strangers' of Norwich and Bethan Holdridge demonstrated the tradition of Morris dancing in Tudor times.



4.2 Toyroom redisplay project

Staff are continuing to work on a project to redisplay the Toyroom collections at Strangers' Hall and increase access to the important toy collections. A programme of visitor consultation has been undertaken and plans are currently being developed. It is anticipated that a funding application will be made to the Heritage Lottery Fund's Our Heritage grant programme in 2018.

5. Museum of Norwich at the Bridewell

5.1 Samson fundraising campaign success



The six week crowd funding campaign to raise £15,000 to display the recently renovated statue of Samson reached a conclusion at the end of March with the final total being met. More than 300 generous donors pledged cash for the campaign, along with support from the Friends of Norwich Museums, the Paul Bassham Charitable Trust, the Geoffrey Watling Charity and the Norfolk and Norwich Archaeological Society. The campaign was run on the Art Fund 'Art Happens' platform, and attracted extensive media and social media coverage.

Samson has been in the care of Norfolk Museums Service since the 1990's, when along with his partner Hercules, he was removed from the front of the building in Tombland for safekeeping. In 2014 Samson was moved to the conservation studios of Plowden & Smith in London, where for over four years specialist conservators carefully removed over 60 layers of white paint, to reveal the original statue. The ambition to display the 17th century figure at the Museum of Norwich can now be realised, thanks to the success of the crowd funding campaign. Funds raised will cover the cost of a bespoke, environmentally controlled display case, and the interpretation.

As part of the campaign, donors are given rewards as a thank you, so the museum worked with local print artist, Leanda Jaine Hughes, who offered her time for free to produce a limited edition print of the Samson and Hercules house, and a lino print of Samson's face, which will be replicated on tote bags and a wood cut. These are now in production and are being sent out to donors mid-June. Curators held an open day at the stores at Gressenhall in April for key supporters and also researchers who were able to get close to Samson for the first time. Samson was chosen as one of just 100 objects to be featured on a BBC app, linked to the BBC Civilisations programme. Thanks to the app, users

were able to see an augmented reality version of Samson wherever they chose to place him.



The Samson BBC app in action

5.2 Dementia friendly work at the Museum of Norwich

Dementia friendly coffee mornings at the museum are proving more popular, as the museum extends networks with local charities working with those living with dementia and their families. Coffee mornings run once a month, and are free. Visitors have a relaxed friendly guided tour of some of the galleries, with a specially trained staff member, followed by refreshments and a chat. Staff welcomed a group from Harford Hill Dementia Services in March.



6. Learning Team activities and projects

6.1 Norwich Castle working with secondary schools

Norwich Castle's work with secondary schools has been recognised as a national case study by the Group for Education in Museums (GEM). Over the last four years, the Castle has seen an increase of over 1,000 secondary school students and 15 secondary schools visiting for learning events. A report outlining the increase has been published by GEM in their latest Case Studies edition (Vol.20). Norwich Castle Learning Officer, Jenni Williams said, *'I am ecstatic that GEM have chosen us as one of their Case Studies and would like to thank everyone who has made this work possible.'*

The number of secondary school visits to Norwich Castle has grown impressively over the past three years, bucking the national trend and demonstrating the need to be responsive to curricular changes and schools' needs. The increase is due to the offer of learning events relevant to the new Key Stage 3 (11-14-years) curriculum in History, Maths and Geography and to the new History GCSE (14-16-year). At Key Stage 3 schools can choose our events on the Norman Conquest (history), the 1216 siege of the Castle (maths), Norwich's changing land uses (geography), the history of slavery, the Industrial Revolution (history) and the First World War. For History GCSE students can visit for the history of

medicine, crime and punishment, Anglo-Saxon and Norman England and studying a historic environment site. The Learning Team now intends to improve events using evaluations from teachers and also to expand the offer for 16-18-year olds

Secondary School Visits to Norwich Castle 2015-18:

	Total number of secondary students	Total number of schools
2015-16	1,953	29
2016-17	2,613	34
2017-18	3,203	48



6.2 HLF Kick the Dust programme

The Heritage Lottery Fund has awarded Norfolk Museums Service a Round 1 pass for a grant of £776,500 for the project Norfolk Journeys, under the HLF's new Kick the Dust programme. This is a consortium project delivered in partnership with YMCA Norfolk and Creative Collisions (a youth arts network based in Great Yarmouth). The project aims to engage with 11-25 year olds – including those most hard to reach - during a four year period from 2018-22. Through the project the young people will be able to participate in a range of structured heritage activities that will develop their skills, experience and confidence. The Round 2 application to the Heritage Lottery Fund was submitted to the HLF in early February 2018, accompanied by a detailed Activity Plan. The

HLF final decision should be known by June 2018, with project activity commencing in September 2018.

A summary of what the project aims to achieve:

“This project will create a model that will facilitate sustained engagement with the young people of Norfolk, including those most hard to reach. NMS will work with YMCA Norfolk and Creative Collisions, two organisations with a strong record of engaging the most vulnerable young people. Young people will create an individual journey into active engagement with Norfolk’s heritage, using structured progression pathways based around a menu of options, tailored to meet individual needs. Specialise mentoring and the support of NMS will ensure young people reach their potential and achieve their aspirations. Outcomes for young people will include certificated skills and training, enhanced employment opportunities, active involvement in programming and a chance to shape the direction and governance of heritage organisations.”

7. Other Developments

7.1 Registrars wedding offer at Norwich Castle

The Registrars weddings offer at Norwich Castle continue to perform strongly with the number of bookings being up year on year. 2017-18 saw a total of 622 ceremonies conducted at Norwich Castle. This was an increase of 5% against the previous year.

7.2. History Mystery Escape Room games

NMS will shortly be commencing a new working relationship with local company History Mystery, with ‘escape room’ games being hosted at the Museum of Norwich. The undercroft at the Museum of Norwich has been cleared so that this atmospheric but previously unused space can facilitate the games.

The History Mystery Game is the next generation of interactive visitor experience – a fusion of immersive, entertaining heritage discovery with the ‘escape room game’ concept that is proving hugely popular in cities around the globe. Escape rooms games are a visitor attraction phenomenon across the world, winning huge appreciation scores on Trip Advisor. The concept started in Japan, grew in continental Europe, and is now rapidly taking hold in the UK and North America. The History Mystery Game borrows from this proven format and adds unique heritage elements to create an exciting interactive experience that is directly relevant to the historic locations. The games will be based around the real stories of places and people – old cities, historic houses, castles, wartime installations, historic figures and families – and will take place in the locations where those stories happened. The History Mystery Game brings new life to unused spaces in heritage locations as the venue for an exciting hour of interactive entertainment

for friends, colleagues or family groups of all ages. Teams of players aim to solve a mystery through a series of fun and challenging physical and mental puzzles that draw on the history of the location, all in a race against the clock. The games are in the latter stages of being designed and we hope to officially start running the games this summer.

The proposed Museum of Norwich game, called The Merchants' Vaults, is linked to the collections within the museum and sees players, 'trapped' in the past with no money. Thankfully, Norwich has a long history of thriving industries and it's up to the team to find a way to use them to survive and make it back to the present. Teams of between two and eight players have exactly one hour to master the secrets of Norwich's industrial past before time runs out. A series of puzzles and challenges are scattered through four evocative underground rooms, each focused on a different industry, reflecting the themes of the museum above. Fantastic settings and authentic looking props add to the atmosphere and intrigue.



7.3 Norwich Castle external lift improvements

Work to undertake the refurbishment of the external lift at Norwich Castle will be commencing in early summer with a view to it being completed in autumn 2018. The works will include a new lift carriage, new electric motor operating control systems to replace the current hydraulic systems, a refurbishment of both entrances of the lift (top and bottom) and also include works to eradicate water ingress issues. This project is being delivered with funding from the Norfolk County Council capital programme.

7.4 Teaching Museum Recruitment

The latest cohort of Teaching Museum trainees have recently taken up their 12 month paid posts. All interested candidates were invited to attend a briefing event prior to application. Shortlisted candidates were then invited to an Assessment Centre run by NMS staff across two days in February. This programme is funded by Arts Council England as a key part of the NMS National Portfolio Organisation Business Plan 2018-22. The 2018-19 trainees are:

Kate Raczynska – Armistice Exhibition (Regimental Museum)

Laura Reeves – Collections Management (countywide)

Ruth Stanley – Learning and Youth Engagement (Time and Tide Museum)

Samanth Parker – Curatorial (Lynn Museum & Ancient House)

Andrew Tullett – Coastal Treasures (King's Lynn)

Monika Saganowska – Coastal Treasures (King's Lynn)

Jessica Harpley – Costume and Textiles (Norwich)

Nicole Hudson – Collections and Exhibitions (Time & Tide Museum)



7.5 Museums & Heritage Awards Conservation Award 2018

The conservation of the Ensign of *Le Généreux* has been awarded a 'Highly Commended' in the Conservation category for this year's prestigious Museums & Heritage Awards. This recognises the enormity and complexity of the task faced by the NMS conservation team when it came to treating the Ensign, the largest object in the NMS collections and the centrepiece for the *Nelson & Norfolk* exhibition held at Norwich Castle from 29 July to 1 October 2017. The six month project included a full condition assessment in St Andrews Hall—the only city

centre space large enough to accommodate the flag—followed by months of painstaking repair work involving the stitching of a new conservation grade lining to the blue section of the flag. Delivering such a large-scale project, needed large-scale resources. Every single logistical consideration had to be scaled up, from creating a 9 metre roller to roll the Ensign on for handling and working, to hand dyeing 60 metres of support fabric of the same colour, creating a continuous table surface for working over 8 metres, using car jacks to lift the heavy roller at each revolution of the Ensign, through to creating a giant, sloping plinth in the exhibition gallery to display the Ensign. The end result was spectacular with the Ensign filling the first exhibition gallery at the Castle. The creation of a long-term accessible storage solution and the production of two films ensures significant numbers of people will continue to be able to engage with this remarkable object. The project involved the curatorial, conservation and design and technical teams, working alongside Lindsay Blackmore, specialist textiles conservator and the dedicated team of volunteers who worked tirelessly to stitch the new lining in place. The conservation work was supported with generous grants from the Costume & Textile Association and the Nelson Society.



8. Visitor Numbers

2017-18 was a record breaking year at Norwich Museums. All three Norwich sites saw a significant year on year increase, but Norwich Castle had an exceptional year with a record breaking 222,260 visitors. This represents an increase of 17,000 visits year on year and an increase of 8,000 visits compared to the previous record of 214,000 visits set in 2014-15.

Detailed visitor figures up to the end of May 2018 will be circulated at the meeting.

Report contact:

Dr Robin Hanley
Assistant Head of Museums (Head of Service Delivery)
Norfolk Museums Service
Shirehall,
Market Avenue,
Norwich NR1 3JQ.
Tel: 01603 493663
Email: robin.hanley@norfolk.gov.uk

Report to the Norwich Area Museums Committee – 5th June 2018

This is my second report as FNM Representative to the Norwich Area Museums Committee. The main event that has taken place since the last meeting has been the Friends of Norwich Museums AGM on the 14th May 2018 in the Town Close Auditorium at the Castle Museum. There was a full Agenda and was well attended by the Membership. The Meeting was Chaired by our President, Richard Jewson and we were pleased to welcome The Lord Mayor and Mayor's consort and other dignitaries from both the County and City Councils.

We were also very pleased that our Patron, Lord Cholmondeley, was able to attend. The Guest Speaker at the end of the meeting was Sir Nicholas Bacon, who spoke about the history of the Bacon family and gave us an excellent presentation of some of the pictures from his family's art collection. Sir Nicholas' Talk was thoroughly enjoyed by all.

The Chairman of FNM, Francesca Makins gave her last report to the Members, as she is standing down after five years of outstanding service to the Friends. Happily, Francesca is staying on as Chairman of the FNM 100 Committee, which has been formed to mark 100 years of the Friends of Norwich Museums, which will be celebrated in 2021. Of that, much more later!

During the AGM, the David Mawson Award was presented by the Mawson family to Mr. Mike Cuddeford for his excellent contributions of artifacts made over a period of time to the Archaeology Department. This is a biennial award given on the recommendation of Departmental Curators of the Norfolk Museums Service, in this case Tim Pestell. Tim also gave Members and Update on the Castle Keep Project, and brought to the meeting a long roll of paper depicting the design of the Tapestry which will be displayed in the newly refurnished Keep, which the Members found very interesting, as the Friends are financially committed to supporting the production and display of the Tapestry.

Head of Museums, Steve Miller, gave an address to the Friends and the Members enjoyed hearing Steve give an overview of the NMS's activities over the past year, including the successful Saving of Samson initiative and how the plans for finally putting Samson on display in the Museum of Norwich are now complete.

Steve Miller also talked about the next exhibition, The Paston Treasure, which is opening in June and promises to be one of the most popular exhibitions in recent years. It has been put together by a very successful collaboration with Yale Museum, and we all look forward to seeing it very much.

Felicity Devonshire
Representative, Friends of the Norwich Museums

24th May 2018

