



# Norwich City Council HECA Report 2021

CEEEP 18<sup>th</sup>

Rachel Sowerby

NCC Fuel Poverty and Energy Officer



[www.norwich.gov.uk](http://www.norwich.gov.uk)



**NORWICH**  
City Council

# What is the HECA?

- The HECA is a compendium of various data sources.
- The HECA shows what momentum has been achieved across various indicators including NCC delivery in respects to home energy efficiency in Norwich
- This new report gives an update on the past two years work and our planned work for the next two years.
- The HECA is a statutory document.



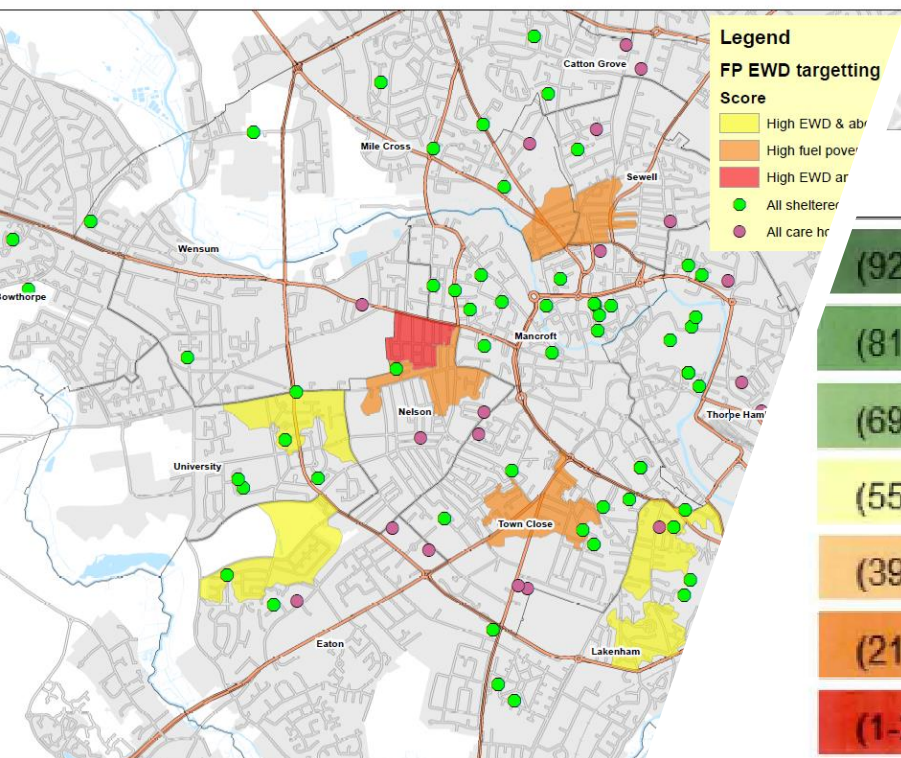
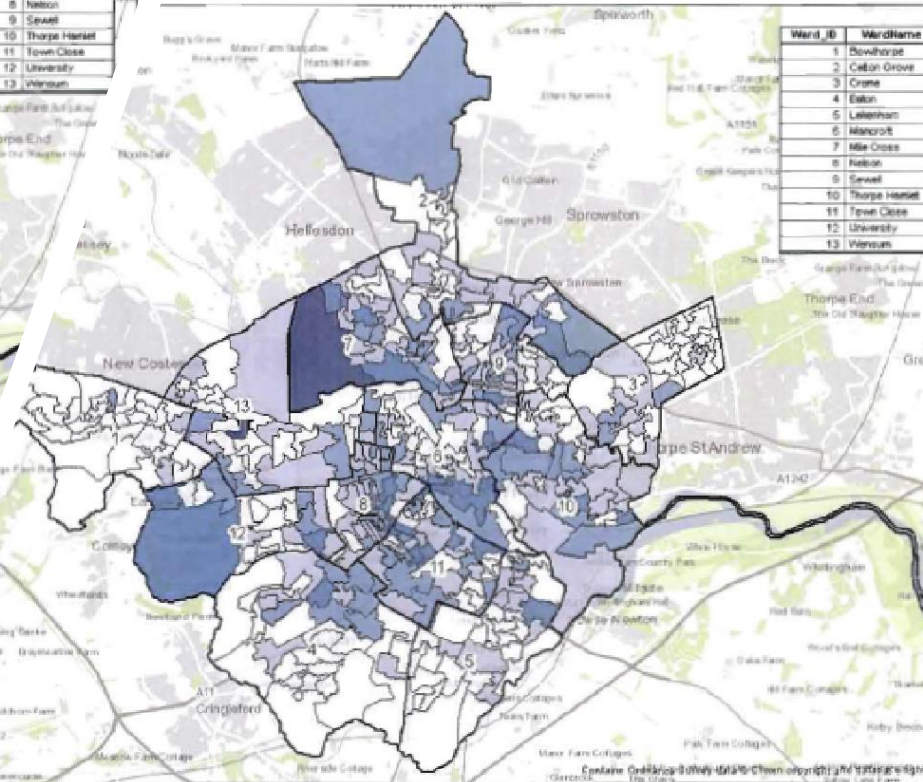
# The state of the city

- SAP rating across council homes is 70.9
- Private Sector SAP 63
- City wide emissions continue to decrease
- Fuel poverty continues to decrease
- Energy cost continue to rise
- Measures are being installed despite Covid-19
- Governments scheme fails homeowners
- Covid-19 / Green economy
- 11.1% of homes are fuel poor





6	Heston
9	Sewell
10	Thorp St Andrew
11	Town Close
12	University
13	Wensum

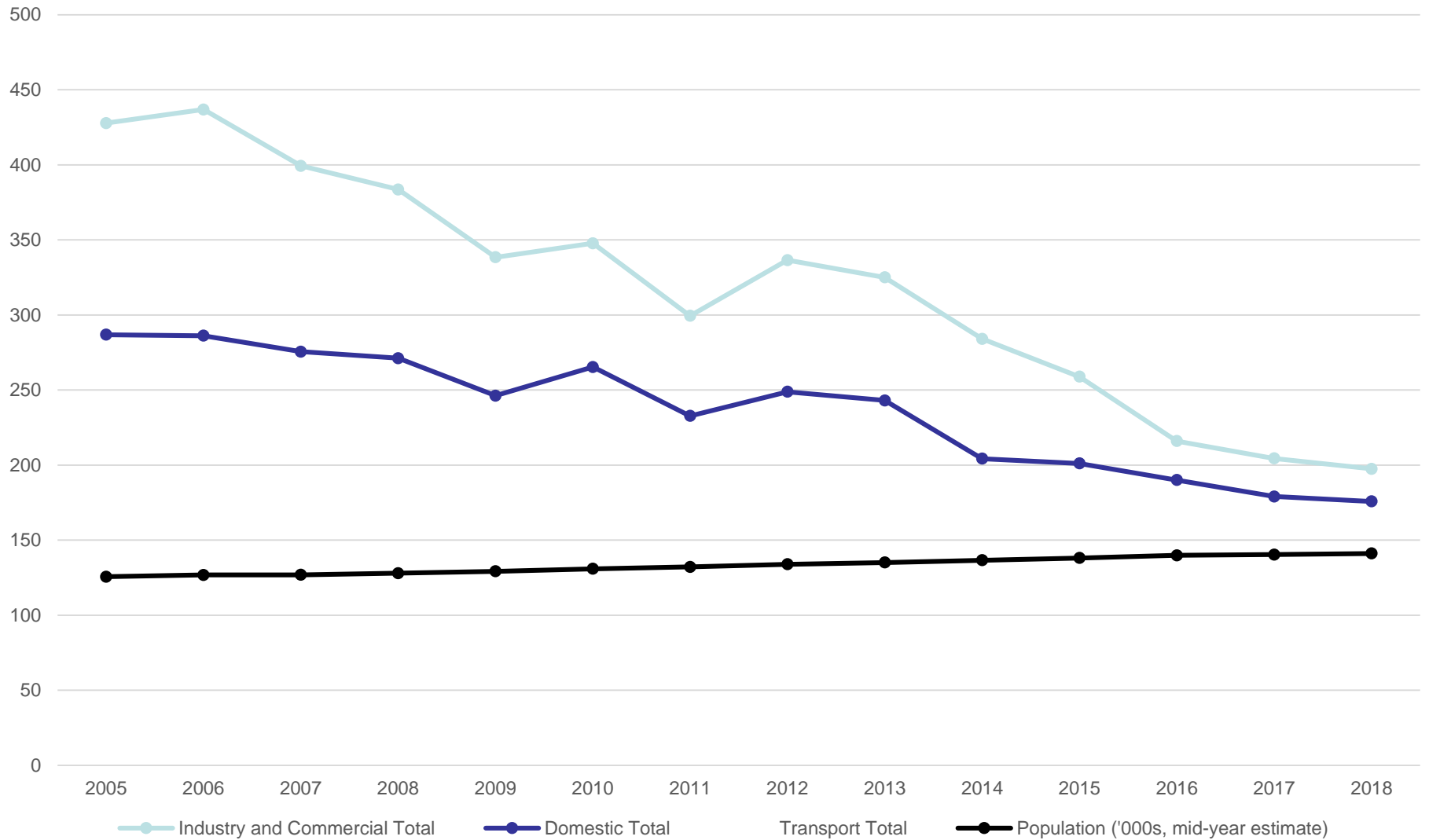


**Legend**  
**FP EWD targeting**  
**Score**

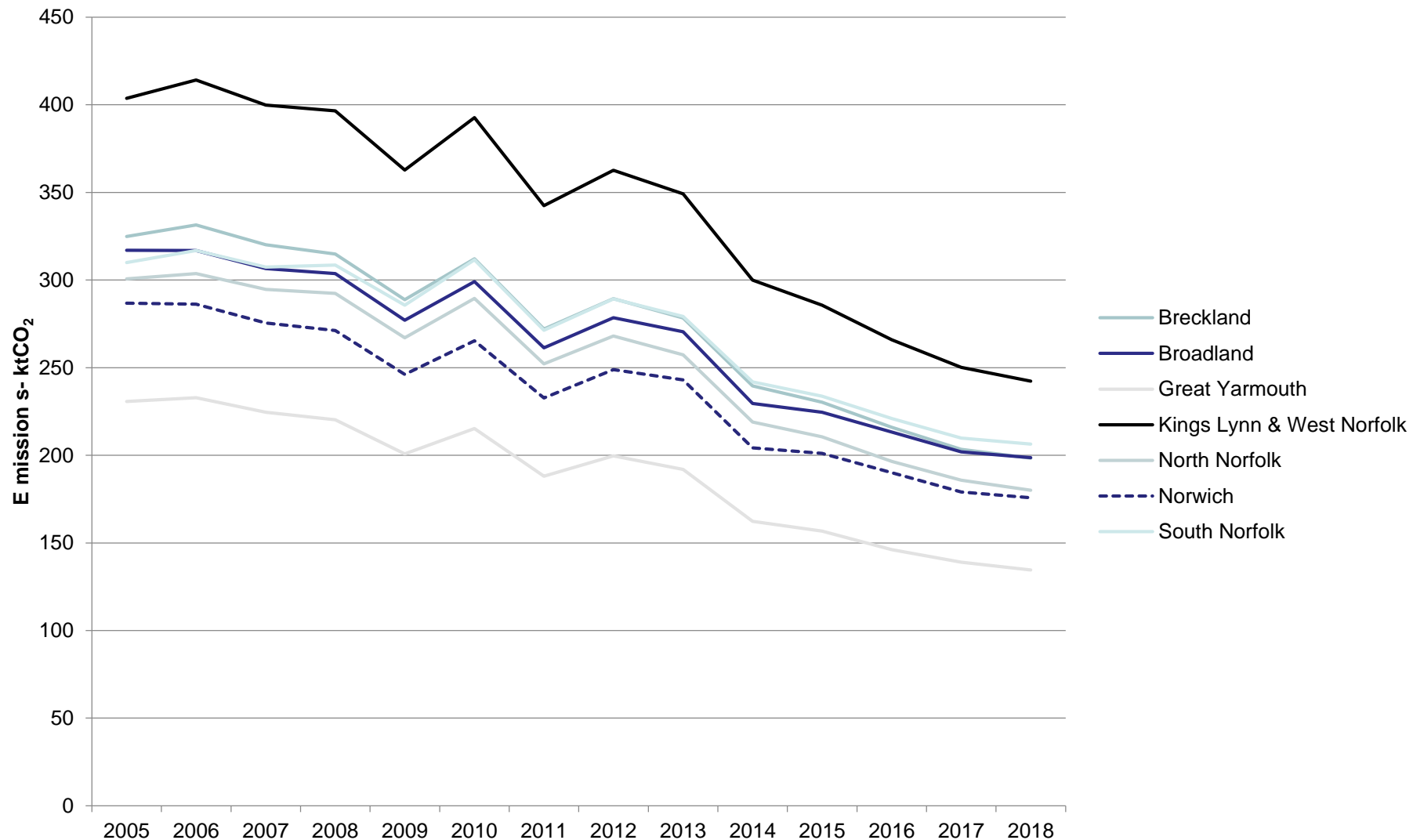
- High EWD and above
- High fuel poverty
- High EWD and above
- All sheltered
- All care homes

	Count	Percent
(92-100) A	0	0%
(81-91) B	122	<1%
(69-80) C	4,281	10%
(55-68) D	13,726	32%
(39-54) E	18,846	44%
(21-38) F	5,424	13%
(1-20) G	478	1%

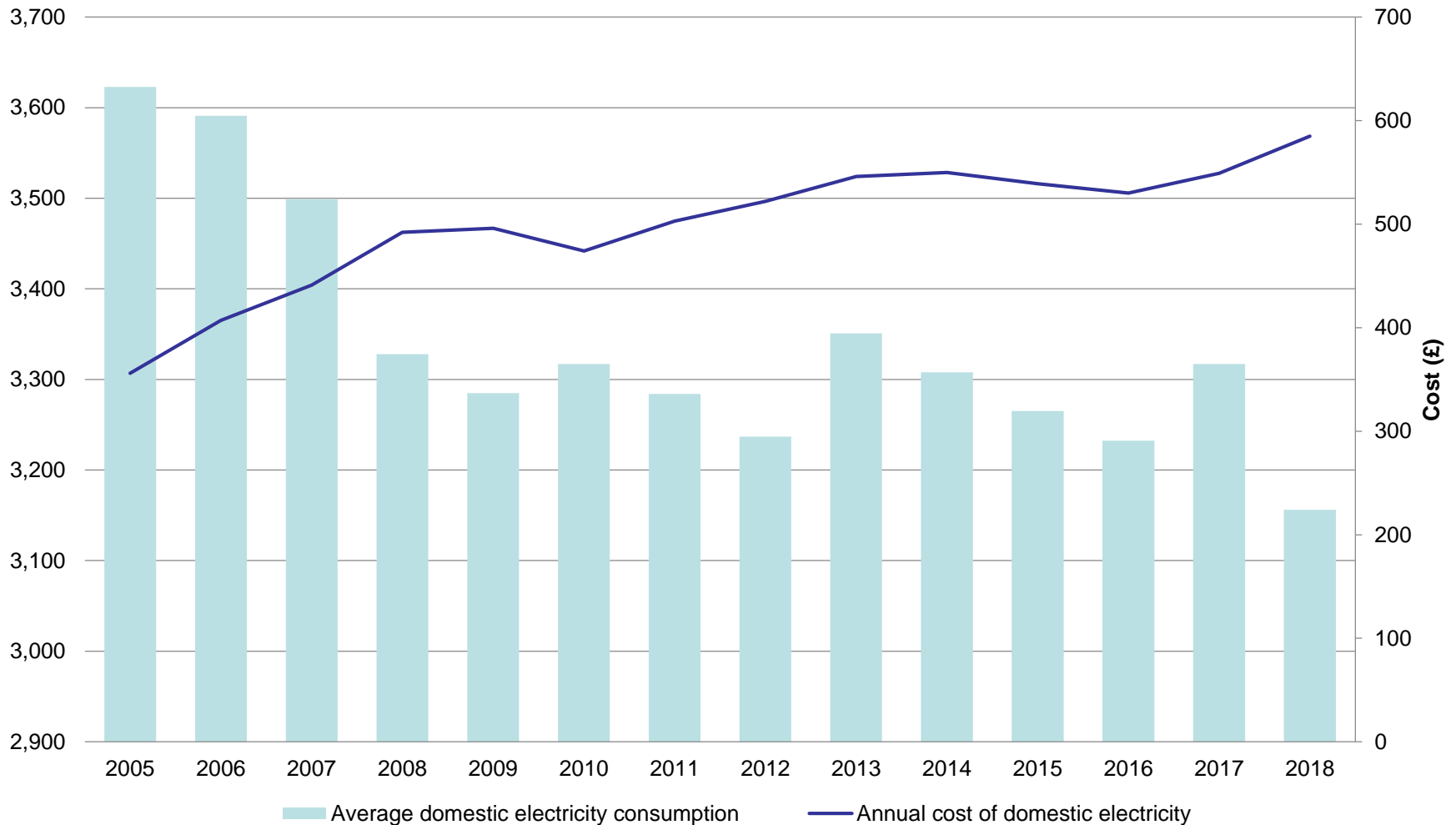
Norwich carbon emissions against population size 2005-2018



# Domestic CO<sub>2</sub> emissions across Norfolk local authorities



# Norwich domestic electricity consumption (kWh) vs annual cost of domestic electricity (£)





## What is fuel poverty?

Households in fuel poverty face both lower incomes and higher energy needs compared to typical households.

Department  
of Energy &  
Climate Change



Typical **English**  
household



Typical **fuel poor**  
household

Annual **income** after tax and housing costs



**£19,707**

less  
than  
half

>



**£9,330**

Annual **energy needs**



**£1,242**

more  
than  
20%  
higher

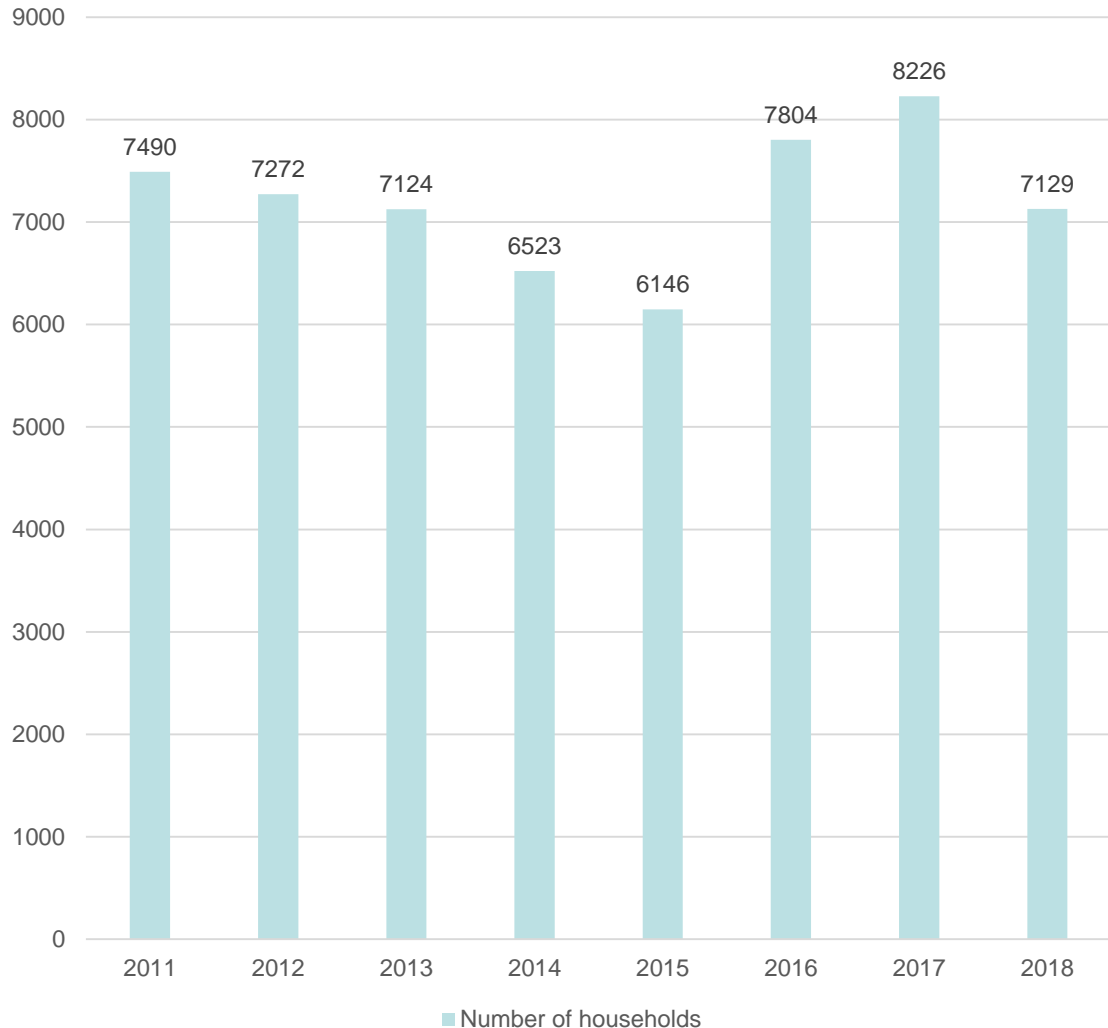
<



**£1,513**

Incomes are for 2012 and are adjusted to reflect spending power of households. Energy costs are also for 2012 and are those required to meet a standardised heating regime.

## Estimated number of Fuel Poor households in Norwich (using LIHC indicator)



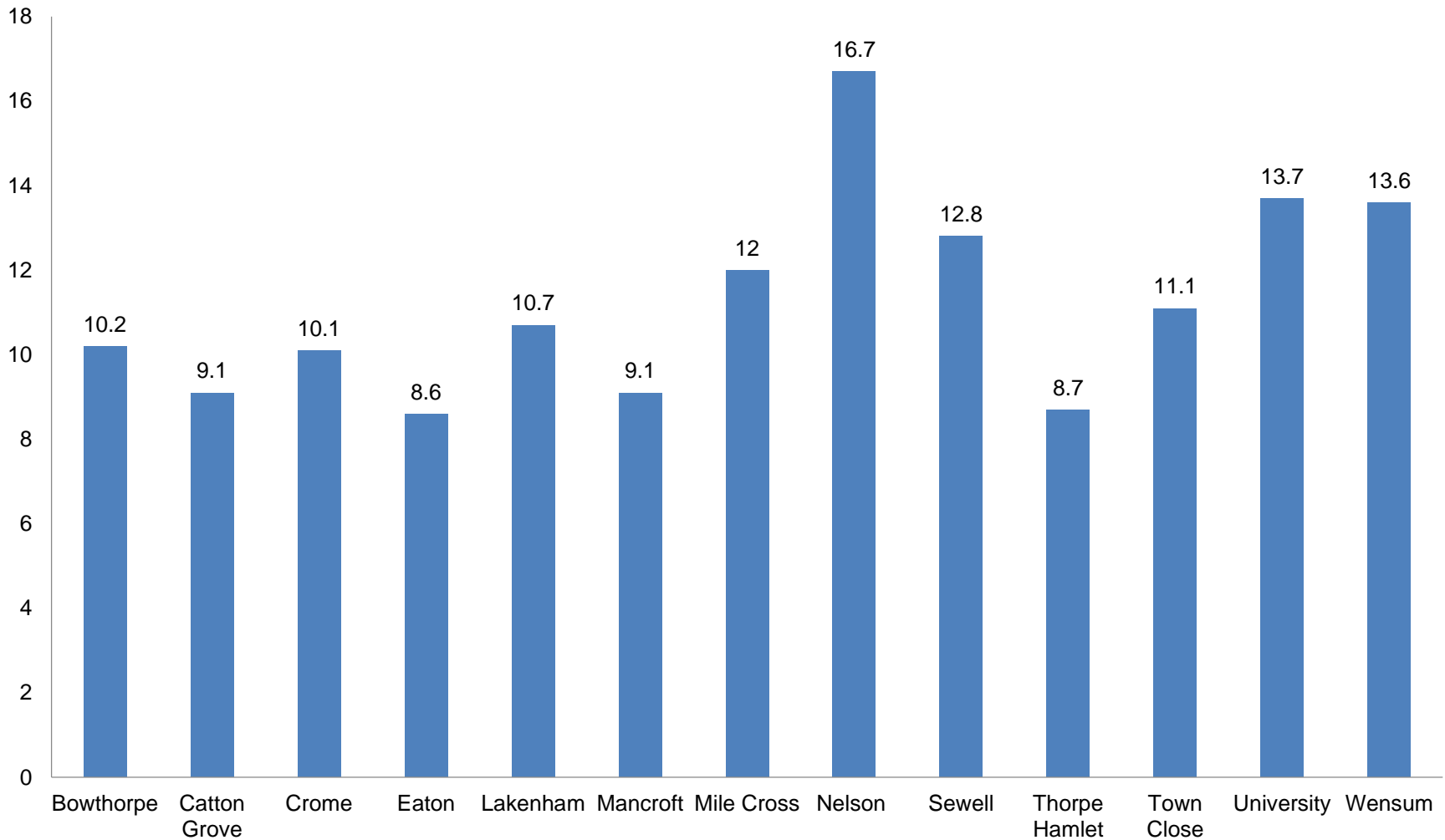
[www.norwich.gov.uk](http://www.norwich.gov.uk)



**NORWICH**  
City Council



# Norwich - Percentage of households in Fuel Poverty by ward

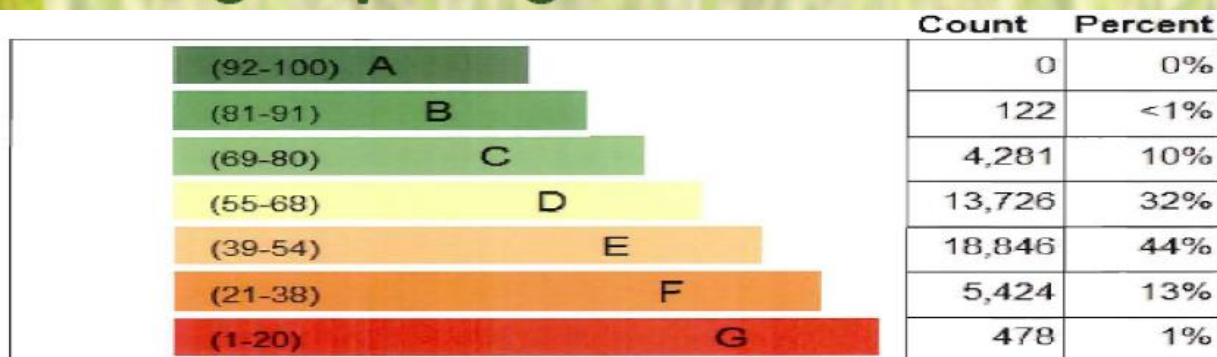


# National Targets

- Central government aims to upgrade as many fuel poor homes as reasonably practicable to Band C by the end of 2030
- There is an estimated £1.7 billion funding gap to meet this target
- We estimate retrofitting homes in Norwich could cost £295 - £511 million.

# Grade C or Better Retrofit

- Solid wall Internal: £295 Million
- Solid Wall External £511 Million
- Solar PV £134 million
- Battery £230 million
- Heat Pumps £538 million
- Energiesprong £1.5 billion





# Our Key Achievements

- Stirling Prize
- Further 2,000 switches through the Big Switch and Save
- New renewable energy big switch
- Further efficiency measures installed through Cosy City
- Council housing energy efficiency increased
- Further Solar Together schemes including battery storage
- Roar Power live
- Fall in CO<sub>2</sub> emissions
- Passive Homes
- Grant funding
- Enforcement

RIBA   
**Stirling Prize**



  
**Norwich BIG  
SWITCH  
AND  
SAVE**  




# THE THEMES



## A CREATIVE CITY

Norwich is a place where culture and creativity play an important part in how the city feels about itself and others perceive it. In 2040, Norwich will be world-renowned for its creativity – a leader in innovation, culture, education and invention.



## A LIVEABLE CITY

The city takes pride in being a place with a great local environment that people value. We are committed to shifting to clean energy by 2040 (carbon-neutral by 2050). We will support and promote sustainable living – where today's citizens meet the needs of the present without compromising future generations.



## A FAIR CITY

Norwich is a place where many already enjoy a great quality of life. By 2040, the health, wellbeing and life chances of all our citizens will be improved. We will remove barriers to achievement and a high standard of living will be enjoyed by everyone.



## A CONNECTED CITY

At the heart of any good city is how well it connects with both its citizens and the world at large. In 2040, Norwich will have a modern transport system, be at the forefront of digital connectivity and create opportunities for all residents to link with each other.



## A DYNAMIC CITY

Today Norwich has two successful universities and thriving life sciences, creative, tech, leisure and retail sectors. In 2040, Norwich will be a place where entrepreneurs, social enterprises, national and global companies choose to provide good jobs, prosperity and success.





NEXT STEPS