

Report to	Sustainable development panel 25 May 2016	Item
Report of	Head of planning services	5
Subject	Re-establishment of the Greater Norwich Development Partnership and update to the Local Development Scheme 2016-18	

Purpose

To agree a recommendation to cabinet that the Greater Norwich Development Partnership (GNDP) Board be re-established to provide a forum for member oversight and discussion in relation to the preparation of the Greater Norwich Local Plan (GNLP). Also to note the revised timetables envisaged for the production of the GNLP and agree to recommend to cabinet that the Local Development Scheme is updated to reflect them.

Recommendation

That members consider the report and agree to recommend cabinet to:

- (1) endorse the establishment of the GNDP in accordance with the terms of reference attached at Appendix 1 to exercise political leadership for the planning activities carried out jointly by the Greater Norwich local planning authorities, in particular in relation to the Greater Norwich Local Plan; and,
- (2) approve an updated Local Development Scheme, by substitution of the contents of Appendix 2, in place of the relevant sections of the previous Local Development Scheme, for publication under section 15 of the Planning and Compulsory Purchase Act 2004 (as amended by section 111 of the Localism Act 2011).

Corporate and service priorities

The report helps to meet the corporate priorities for a prosperous and vibrant city, a safe, clean and low carbon city and a healthy city with good housing.

Financial implications

There are no direct financial implications.

Ward/s: All wards

Cabinet member: Councillor Bremner – Environment and sustainable development

Contact officers

Mike Burrell, planning team leader (policy) 01603 212525

Graham Nelson, head of planning 01603 212530

Background documents

None

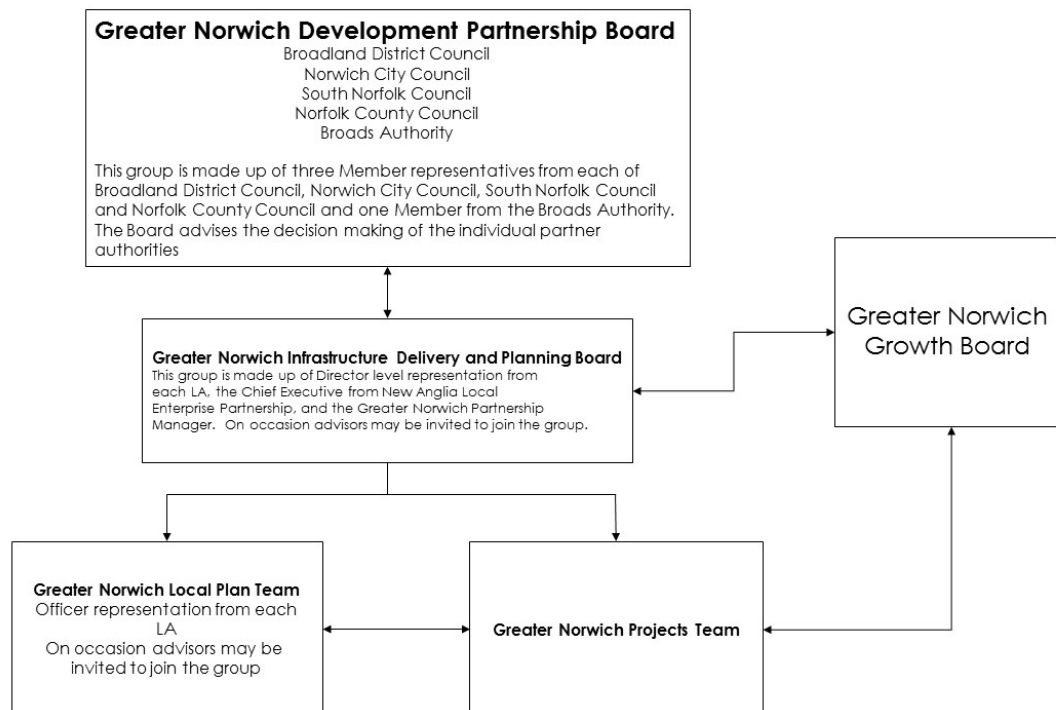
Report

Introduction

1. The Greater Norwich Growth Board at its meeting of 24 September 2015 agreed that the greater Norwich authorities would commence working together on a new local plan for the Norwich area to roll forward and replace the JCS (to be known as the Greater Norwich Local Plan, or GNLP). This was subsequently endorsed by individual councils in accordance with their constitutions. In the case of the city council this was formally endorsed by cabinet on 9 March 2016 by approving the publication of a revised Local Development Scheme (LDS) that included the timetable for the GNLP. This was preceded by a debate at the sustainable development panel on 24 February who recommended this course of action to cabinet.
2. Further to this agreement, work has been continuing with partners on: the preparation of the GNLP (particularly in relation to the call for sites and matters relating to the Sustainability Appraisal), the resourcing of the exercise (with closer working across the local authorities being embedded), and discussion of providing appropriate opportunities for joint member discussion of emerging documents.
3. The latter discussion has resulted in an agreement between the local authority partners to seek authority to establish an appropriate joint member group to provide oversight of the development of the joint Local Plan. Although there is some uncertainty due to the ongoing discussion about devolution and a rapidly changing national framework for planning, the partners have agreed to seek authority to re-establish a GNLP Board to do this. A similar mechanism was considered effective in the preparation of the Joint Core Strategy although it should be noted that some modifications to the previous structure are being proposed to reflect the fact that the Greater Norwich Growth Board now exists.
4. The re-established GNLP Board will meet in public and will make recommendations to the constituent authorities. Decision making remains with the responsible councils. In the case of Norwich City Council this will mean that reports will need to be considered by sustainable development panel, cabinet and full council at various stages of the plan preparation process in accordance with the constitution.
5. The proposed terms of reference for the GNLP Board are attached as Appendix 1.
6. The expectation is that GNLP Board will only be an interim measure and a more permanent arrangement will be established in due course for member oversight and possibly decision making on the GNLP. This is likely to be considered in the autumn following clarity being gained over the nature of any possible devolution agreement. But in the meantime there remains a need to progress work on the GNLP through current procedures so the re-establishment of the GNLP Board is considered necessary to do this.
7. Whilst this matter has been under debate with partners, a revised and updated timetable for the preparation of the GNLP has been agreed. This timetable necessitates some update to the existing Local Development Scheme. The necessary updates are attached as Appendix 2.

Appendix 1 – Proposed Terms of Reference for Greater Norwich Development Partnership Board

Governance and Support Arrangements



The Greater Norwich Development Partnership Board

The Greater Norwich Development Partnership Board will exercise political Leadership for the planning activities carried out jointly by the Greater Norwich Local Planning authorities. This group is made up of three members from Broadland, Norwich City Council, South Norfolk Council, Norfolk County Council and a member from the Broads Authority. The group is supported in its role by the Director level representation from each Local Authority and a series of advisors who will be seconded into the group when necessary.

Membership of the GNDP Board

Broadland District Council
Norwich City Council
South Norfolk Council
Norfolk County Council

} up to three members from each Council, including Leader and Planning Portfolio

up to three members including the Chair of EDT committee

Broads Authority

one member

Substitutes: Members may submit substitutes when unable to attend themselves in agreement with the chair

Frequency: Meetings are held quarterly or more frequently as required.

Responsibilities

- To prepare and monitor a joint Local Plan for the three district local planning authority areas of Broadland, City of Norwich and South Norfolk, to include integrated land-use and transport policies.
- To oversee the work of the Greater Norwich Local Plan team and associate bodies and ensure all bodies work effectively
- To make recommendations to the Councils and Broads Authority on any wider planning matter affecting the Broadland, City of Norwich and South Norfolk administrative areas.
- To advise on the development of the Local Transport Plan (LTP) implementation strategies and on future reviews of the LTP relevant to the area, including the Norwich Area Transportation strategy (NATS).
- To facilitate joint working between the local planning authorities and the local transportation authority on matters of common interest and benefit
- To ensure the Greater Norwich Infrastructure Plan reflects the needs of the Greater Norwich Local Plan

The Greater Norwich Infrastructure Delivery and Planning Board

The Directors are responsible for directing the Greater Norwich strategic planning activity on behalf of the Authorities and ensuring it meets the objectives.

Membership of the Greater Norwich Infrastructure Delivery and Planning Board

Broadland District Council

Norwich City Council

South Norfolk Council

Norfolk County Council

Broads Authority

New Anglia Local Enterprise Partnership

Greater Norwich Partnership

Head of Planning

Executive Head of Regeneration
& Development

Director of Growth and Localism

Executive Director of Community
and Environmental Services

Director of Planning and
Resources

Managing Director

Partnership Manager

Substitutes: Director's may submit substitutes when unable to attend themselves

In attendance at Board meetings

Representatives from the Greater Norwich Local Plan Group and the Greater Norwich Projects Team will attend when required.

Appendix 2

Changes to the published Local Development Scheme for Norwich

The Local Development Scheme for Norwich was published on 10 March 2016. As a result of the ongoing discussions on the revised administrative and governance arrangements for the Greater Norwich Local Plan (as detailed in the report), an amended timetable and production milestones for the plan have been agreed and need to be reflected in the LDS. Accordingly, the following changes are proposed to the Local Development Scheme for Norwich. Subject to agreement by Cabinet, these would have effect from June 2016. The remainder of the Local Development Scheme remains unchanged.

- a) In Section 5 (Key Document Profiles), **delete** the Key Document Profiles table on pages 13 to 15 relating to the Greater Norwich Local Plan and **substitute** the table below. The amended sections are shaded.

5. Key document profiles

Document Title	Greater Norwich Local Plan (GNLP)
Role and content	To provide the strategic vision, objectives and strategy for future development of the greater Norwich area, to accommodate objectively assessed needs for growth and to identify specific sites for development in the period to 2036. The GNLP provides the strategic context for the preparation of lower level policy documents prepared by the three constituent district planning authorities.
Status	Statutory Development Plan Document (DPD)
Conformity	The document must conform with the National Planning Policy Framework 2012 (the NPPF) and with any subsequent review of the Framework. It should also accord with standing advice in national Planning Practice Guidance (PPG).
Geographical coverage	The three districts of Broadland, Norwich and South Norfolk, excluding the parts of those districts falling within the Broads Authority area.
Joint working arrangements (if any)	The plan will be prepared jointly with Broadland and South Norfolk district councils with the support of Norfolk County Council.

Document Title		Greater Norwich Local Plan (GNLP)	
Relationship with adopted local plan(s)		<p>The GNLP will supersede</p> <ul style="list-style-type: none"> a) the Joint Core Strategy (JCS) for Broadland, Norwich and South Norfolk (adopted March 2011, amendments adopted 2014) b) the Norwich Site Allocations and Site Specific Policies Local Plan (adopted December 2014) 	
Evidence required <i>May include selective reviews of the evidence base already in place for the JCS and new and/or updated studies where necessary, dependent on the eventual scope and coverage of the plan.</i>		<p>This is likely to include (but not be limited to):</p> <ul style="list-style-type: none"> - The published <i>Central Norfolk Strategic Housing Market Assessment</i> (SHMA) 2016, and future updates which may be integrated into a combined Housing and Economic Development Needs Assessment (HEDNA); - The emerging <i>Norfolk Housing and Economic Land Availability Assessment</i> (HELAA); - An economic growth study (if not part of the HEDNA); - An infrastructure study; - A new or updated strategic flood risk assessment (SFRA); - An updated retail study; - A new or updated water cycle study; - A new or updated green infrastructure study; - A new or updated open space study; <p>The plan must be accompanied by an independent Sustainability Appraisal (SA) and Habitats Regulation Assessment (HRA) which will draw on, and themselves be part of, the evidence base.</p>	
Production milestones Commence document production Publication of Local development scheme Review, consult on and revise (where necessary) the Statements of Community Involvement for participating districts Call for sites – invitation to put forward specific development sites for inclusion in the GNLP Commission, prepare and publish evidence studies required to support the GNLP		<p>December 2015</p> <p>March 2016 (GNLP timetable amended May 2016) by Summer 2016</p> <p>May – July 2016</p> <p>March 2016 – May 2017</p>	

Document Title	Greater Norwich Local Plan (GNLP)
Complete and publish draft (Regulation 18) plan for consultation: to include issues and policy options and shortlisted development sites	October-December 2017
Complete and publish pre-submission draft (Regulation 19) plan for consultation: to include agreed strategic policies, sites and site-specific proposals.	Feb-March 2019
Assess representations in response to Regulation 19 draft, prepare all formal submission documents	April 2019 – June 2019
Formal submission of GNLP to Secretary Of State (Regulation 22)	August 2019
Examination in public	February 2020
Consultation on inspector's proposed main modifications	June-July 2020
Publication of Inspectors' Report	October 2020
Adoption of the Greater Norwich Local Plan	December 2020
Monitoring and review	Annual Monitoring report and five year housing land supply updates
Governance and Resources <i>Note: The expectation is that the GNDP Board will only be an interim measure and a more permanent arrangement will be established in due course for member oversight and possibly decision making on the GNLP. This is likely to be considered in the Autumn following clarity being gained over the nature of any possible devolution agreement.</i>	Resources A dedicated Greater Norwich Local Plan Team comprising officers from the three constituent district authorities and Norfolk County Council, initially working alongside a Greater Norwich Project Team responsible for wider planning and implementation matters across the area. Governance The Greater Norwich Development Partnership Board will exercise political leadership and oversight for the planning activities carried out jointly by the Greater Norwich local planning authorities. This group is made up of three elected members from Broadland, Norwich City Council, South Norfolk Council, Norfolk County Council and a member from the Broads Authority. The group is supported in its role by the Greater Norwich Infrastructure Delivery and Planning Board with Director level representation from each Local Authority and a series of advisors who will be seconded into the group when necessary. The Directors are responsible for directing Greater Norwich strategic planning activity on behalf of the Authorities and ensuring it meets the objectives.

- b) On page 18, **substitute** the Key Document Programme diagram with the revised programme diagram overleaf.

ANNEX 1

LOCAL DEVELOPMENT SCHEME FOR NORWICH, 2016-19
KEY DOCUMENT PROGRAMME - UPDATED MAY 2016

Document	2015			2016												2017												2018												2019							
	O	N	D	J	F	M	A	M	J	J	A	S	O	N	D	J	F	M	A	M	J	J	A	S	O	N	D	J	F	M	A	M	J	J	A	S	O	N	D	J	F	M	A	M	J		
Preparation of Local Development Scheme						R																																									
ADOPTED DEVELOPMENT PLAN DOCUMENTS IN USE																																															
Joint Core Strategy for Broadland Norwich and South Norfolk																																															
Norwich Site Allocations and Site Specific Policies Local Plan																																															
Norwich Development Management Policies Local Plan																																															
Northern City Centre Area Action Plan (NCCAAP)						E																																									
Policies Map (+updates)						&																																									
PROPOSED DEVELOPMENT PLAN DOCUMENTS																																															
Greater Norwich Local Plan			*					S	S	S																																					
PROPOSED NON STATUTORY DOCUMENTS																																															
Norfolk Strategic Framework (Joint with other Norfolk councils)			*																																												
PROPOSED SUPPLEMENTARY PLANNING DOCUMENTS																																															
Open Space and Play SPD	A																																														
Heritage Interpretation SPD			A																																												
Trees and Landscape SPD									A																																						
Bethel Hospital Planning Brief (SPD)						*				12	12	A																																			
STATEMENT OF COMMUNITY INVOLVEMENT (Review)										C	A																																				

KEY**General**

LDS production/review	
Resolution to bring LDS into effect	R
Commencement of this LDS period	
Commencement of individual document production	*

Adopted development plan documents

Adopted DPDs (local plans) in use	
Adopted DPD (local plan) expiry	E
Policies map update (to delete redundant NCCAAP policies)	&

Greater Norwich Local Plan (GNLP)

Call for sites	S
Preparation of draft Regulation 18 plan and supporting evidence	
Reg 18 draft consultation stage	18
Assessment of responses/preparation of Reg 19 pre-submission plan	
Reg 19 publication (pre-submission) stage	19
Assessment of responses/preparation of Reg 22 submission document	
<i>Subsequent statutory GNLP milestones not included in this LDS period</i>	
<i>Submission to Secretary of State</i>	August 2019
<i>Examination in Public</i>	February 2020
<i>Consultation on inspectors' proposed modifications</i>	June/July 2020
<i>Adoption</i>	December 2020

Norfolk Strategic Framework (NSF)

Evidence gathering and production of draft framework	
Consultation on draft framework	
Production of final framework	C
Adoption of NSF by constituent Norfolk councils	
<i>Provisional timetable - may be subject to change.</i>	A

Supplementary Planning Documents (SPD)

SPD production	
SPD Consultation - draft (Regulation 12)	12
SPD adoption	A

Statement of community involvement review (for info)

Consultation on revised SCI	C
Adoption of revised SCI	A