

Report for Information

Report to Norwich Highways Agency Committee
25 September 2008

Report of Head of Transportation and Landscape

Subject Performance Monitoring of the Highways Agency Agreement

Item
12

Purpose

This report describes the performance of the Highways Agency Agreement, for the financial year 2008/2009 up to the end of August 2008.

Recommendations

That the Committee receives the available performance results, and notes that, generally, recent performance results for the 2008/2009 financial year compare reasonably well against targets.

Financial Consequences

There are no direct financial consequences arising from this report.

Strategic Objective/Service Priorities

The report helps to achieve the corporate objective to make Norwich an exemplar of a modern, European, 'liveable' city, ie one that is clean, safe, attractive and able to manage transport issues effectively and the service plan priority to work with Norfolk County Council to develop and implement the Norwich Area Transportation Strategy and Norfolk Local Transport Plan.

Contact Officers

Clive Gristwood, Programme Manager

01603 213420

Background Documents

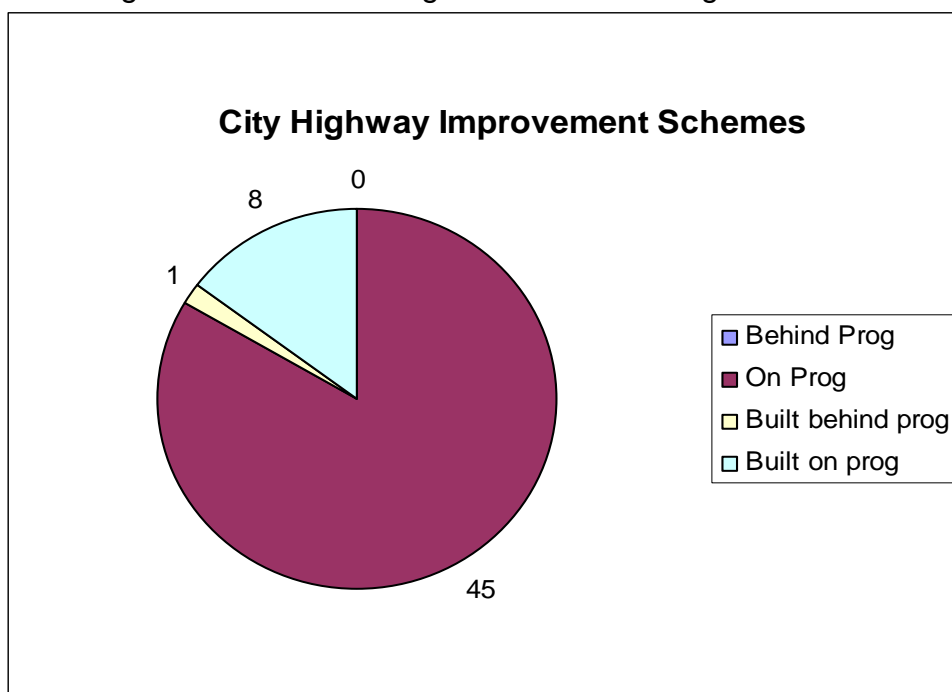
None

Background

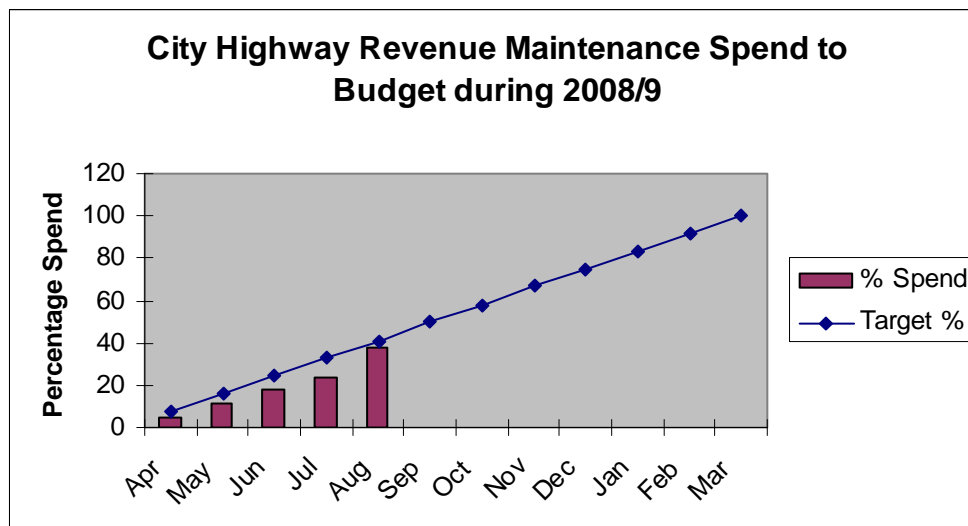
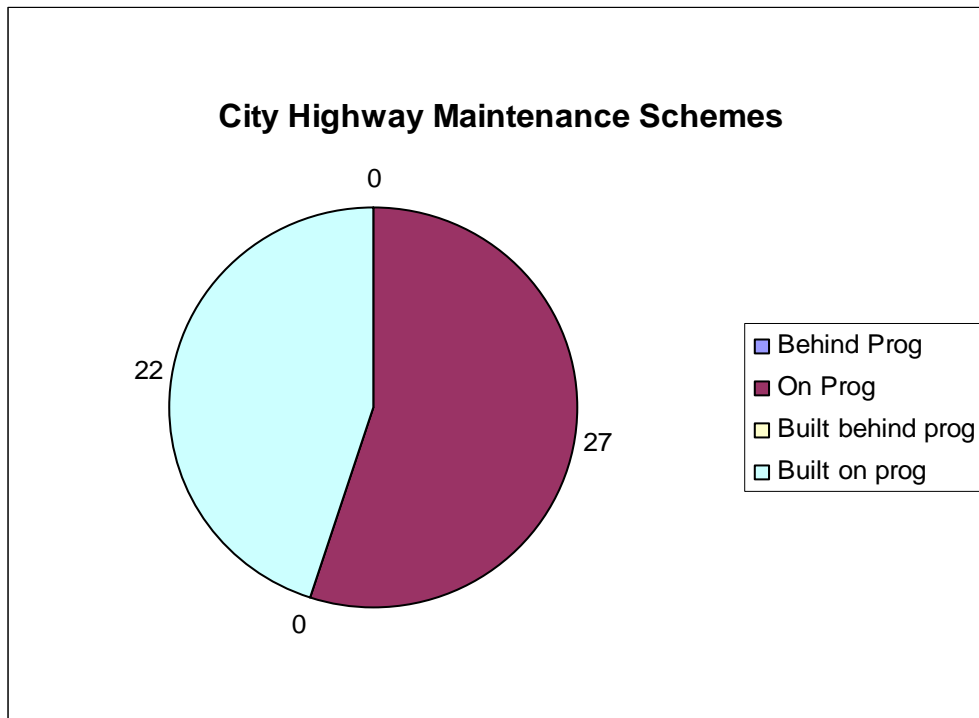
1. The City Council discharges highway duties in Norwich on behalf of the County Council, through an Agency Agreement. The action needed to support the Agency agreement is set out in the 2008/09 Business Plan, which provides for performance assessment.

Performance Monitoring of Agency Agreement

2. Details of performance data, any targets, and progress so far this year, summarised under the headings below. Delivery of programmes to targets and budgets/ Financial control. Works programmes are updated monthly, and progress against targets and budgets reported.
3. *Capital Improvement schemes:* There are 54 schemes in the 2008/2009 programme. Nine are substantially complete at the end of August. The remaining schemes are on target at the end of August 2008.

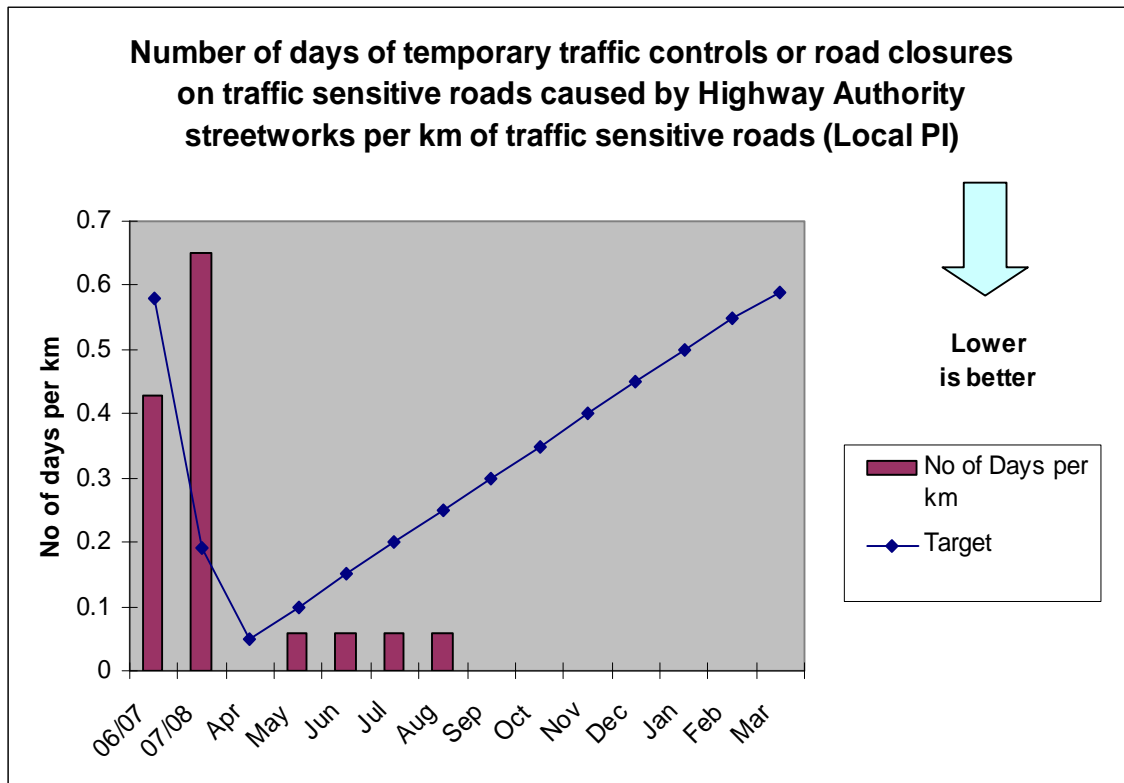


4. *Highways maintenance:* There were 49 schemes listed in the capital maintenance programme. Twenty two schemes had been completed by the end of August. Approximately 38% of the highway maintenance revenue budget had been spent.

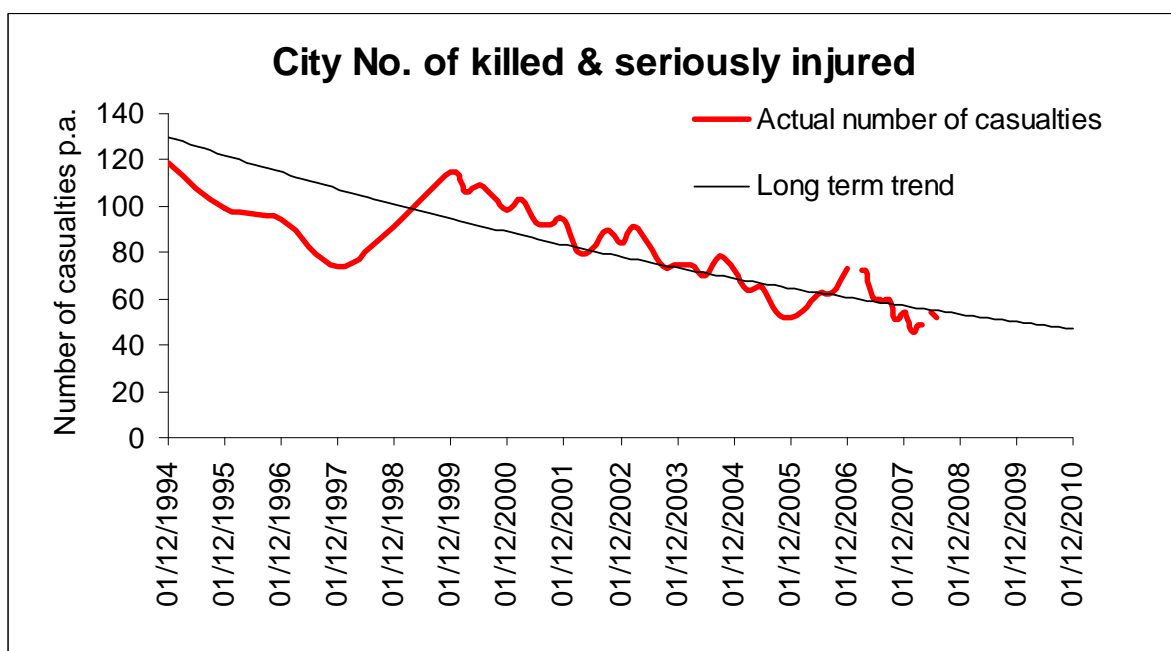


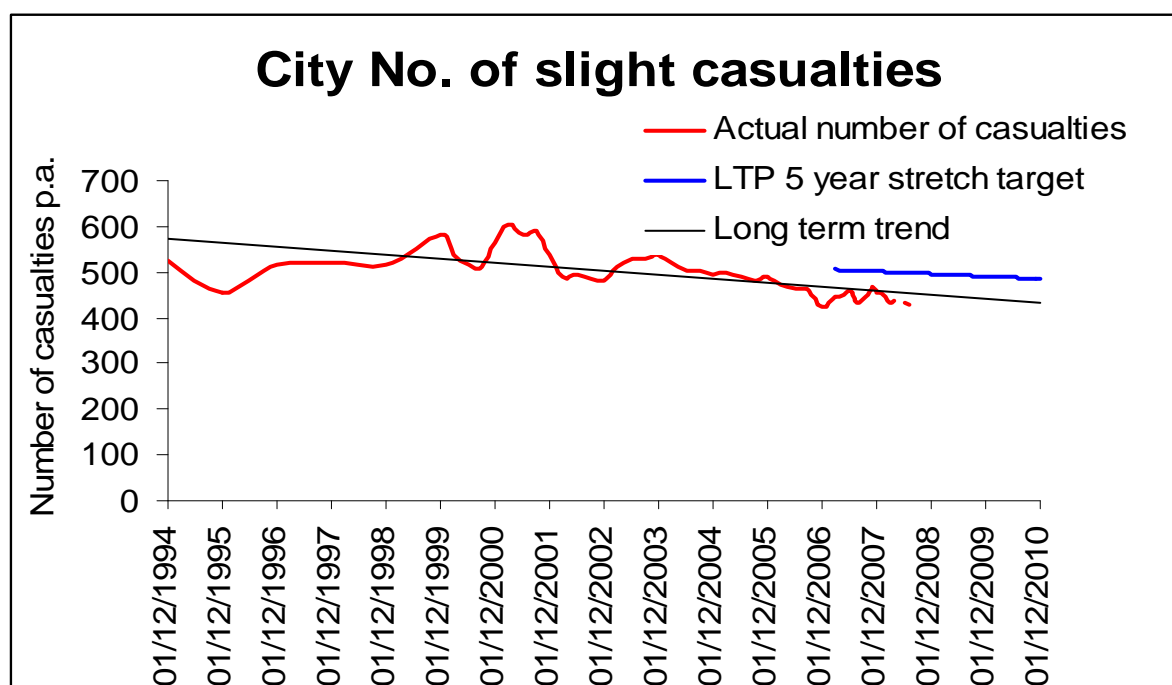
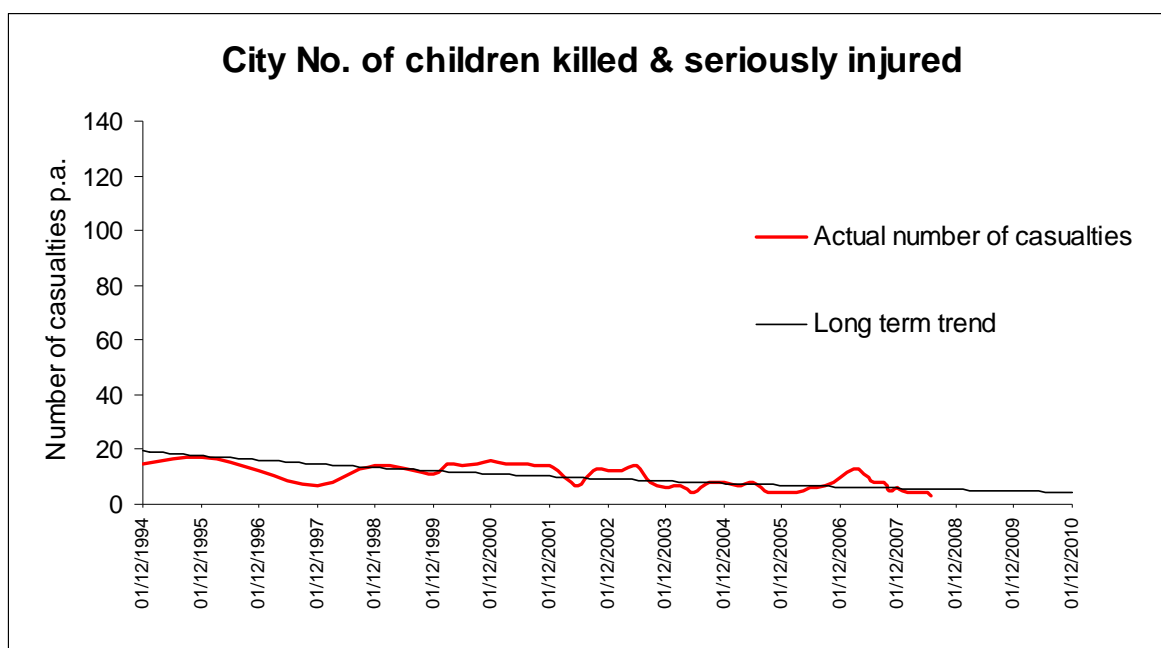
Compliance with standards, codes and procedures

5. Data is collected monthly for a number of national “Best Value” Performance Indicators (BVPI’s).
 - ‘Local PI (formerly BVPI 100) - Number of days temporary traffic controls or road closure on traffic sensitive roads caused by local authority roadworks per km of traffic sensitive road’ is 0.06 to the end of August 2008, (City target for 2008/2009 is 0.59)



- *'BVPI 165 – Percentage of pedestrian crossings with facilities for disabled people'* the City figure is currently 100%, this figure contributes to the overall County target by the end of 2008/2009. This target is set to remain at 100% for the City throughout 2008/2009
- *'BVPI 99 – Road accident casualty reduction'* – the figures for the City area show an improving trend in both the overall and child Killed and Seriously Injured (KSI). The combined Slight Injuries show a gradual improving trend.

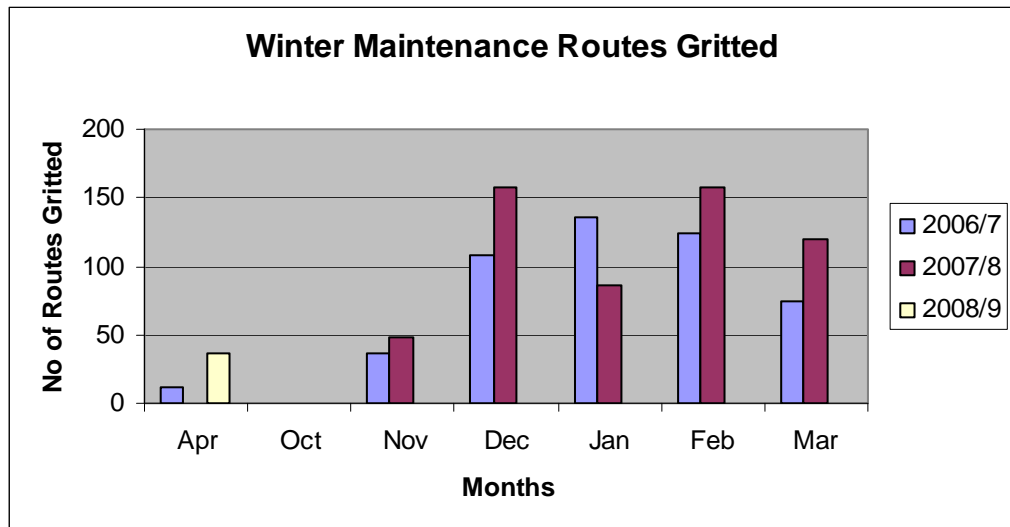




6. Data is also collected monthly for the following local performance indicators (LPI's) to contribute towards the County Council's Service Plan.

- 'The percentage of repairs to dangerous damage to roads which were carried out within 24 hours' is 100% in the 2008/2009 financial year, (City/County target 100%). A cumulative total of 23 reports of dangerous damage to roads had been received up to the end of August.
- 'The percentage of repairs to dangerous damage to footways which were carried out within 24 hours' is 100%, (City/County target 100%). A cumulative total of 29 reports of dangerous damage to footways were received by the end of August.

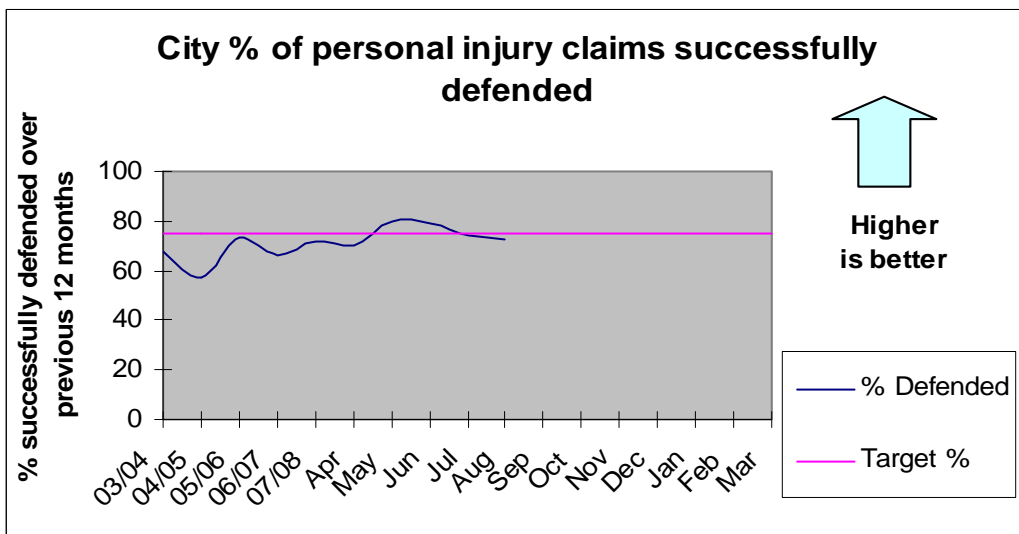
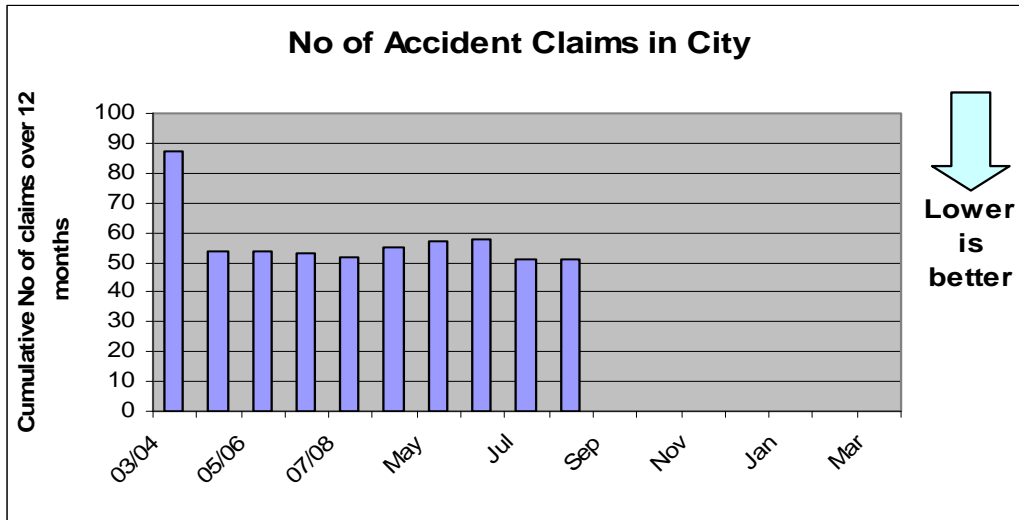
- *'The combined percentage of repairs to dangerous damage to roads and footways which were carried out within 24 hours'* is 100%, (City/County target 100%).
- *'The percentage of utility work schemes which are completed on time'* is 97% up to the end of April. (City/County targets for 2008/9 is 96.5%).
- *'Percentage of priority routes gritted within three hours of mobilization from the depot'* - The Winter maintenance season commences in October 2008. The 37 routes gritted during April 2008 were all completed within the 3 hour time limit. (City/County target 100%).



- *'The percentage of highway material that was recycled by City Care'* by the end of July 2008 was 89.2%

Accident Claims

- The number of claims received and the settlement rate of claims for highway and personal injury claims are monitored.
 - *'Percentage of personal injury claims successfully defended'* is 78% for the claims settled to the end of August, (City/County target for 2008/9 is 75%). A total of 20 claims have been received in the 2008/2009 financial year. Of the 27 claims settled in the 2008/2009 financial year, 6 have resulted in payment.



- 'Percentage of non personal injury claims successfully defended' is 50% , (City/County target for 2008/9 is 75%). Two claims have been made in the 2008/2009 financial year. Of the two claims that have been settled in 2008/2009, one resulted in a payment being made.