

Sustainable development panel

Date: Wednesday, 25 May 2016

Time: 09:30

Venue: Westwick room, City Hall, St Peters Street, Norwich, NR2 1NH

Committee members:*

Councillors:

Bremner
Brociek-Coulton
Herries
Grahame
Jackson
Lubbock
Maguire
Thomas (Va)

For further information please contact:

Committee officer: Jackie Rodger
t: (01603) 212033
e: jackierodger@norwich.gov.uk

Democratic services
City Hall
Norwich
NR2 1NH

* subject to confirmation following annual council

www.norwich.gov.uk

Information for members of the public

Members of the public and the media have the right to attend meetings of full council, the cabinet and committees except where confidential information or exempt information is likely to be disclosed, and the meeting is therefore held in private.

For information about attending or speaking at meetings, please contact the committee officer above or refer to the council's website



If you would like this agenda in an alternative format, such as a larger or smaller font, audio or Braille, or in a different language, please contact the committee officer above.

Agenda

Page no

1 **Appointment of vice chair**

To elect a vice chair for the current civic year

2 **Apologies**

To receive apologies for absence

3 **Declarations of interest**

(Please note that it is the responsibility of individual members to declare an interest prior to the item if they arrive late for the meeting)

4 **Minutes**

5 - 8

To approve the accuracy of the minutes of the meeting held on 23 March 2016

5 **Re-establishment of the Greater Norwich Development Partnership and update to the Local Development Scheme 2016-18**

9 - 20

Purpose - To agree a recommendation to cabinet that the Greater Norwich Development Partnership (GNDP) Board be re-established to provide a forum for member oversight and discussion in relation to the preparation of the Greater Norwich Local Plan (GNLP). Also to note the revised timetables envisaged for the production of the GNLP and agree to recommend to cabinet that the Local Development Scheme is updated to reflect them

6 **Technical Consultation on Greater Norwich Local Plan Draft Sustainability Appraisal Scoping Report**

21 - 22

Purpose - To inform the panel of the content of the Greater Norwich Local Plan draft sustainability appraisal scoping report prior to technical consultation.

Date of publication: **Wednesday, 18 May 2016**

Sustainable development panel**09:30 to 11:25****23 March 2016**

Present: Councillors Bremner (chair), Herries (vice chair), Grahame, Jackson, Lubbock, Thomas (Va) and Schmierer (substitute for Councillor Bogelein)

Apologies: Councillors Bogelein and Woollard

1. Declarations of interest

There were no declarations of interest.

2. Minutes

RESOLVED to approve the minutes of the meeting held on 24 February 2016.

3. Houses in Multiple Occupation – Interim Progress Report

(Three members of the public attended the meeting for this item. The chair agreed to move the item up the agenda. General introductions ensued.)

The head of planning services gave a detailed presentation of the report and explained its background. He also referred to correspondence received from residents in Nelson Ward calling on the council to take immediate action by implementing an Article 4 direction like other university cities and halt the expansion of unregulated houses in multiple- occupation (HMOs). A graph showing the distribution of student only households by ward for 2015 and 2016 was circulated at the meeting. Although the head of planning services cautioned about the reliability of the data, the data showed a drop in the number of student only households in all wards which could demonstrate a downward trend. The concerns raised by residents about HMOs included: inflation of house prices because of competition between buy-to-let landlords and making houses unaffordable for family use; the effect on communities because of former council houses purchased under right to buy and sold as HMOs; exacerbation of pressure on parking spaces from the occupants of HMO properties; loss of council tax from properties used solely by students; HMO properties being less well kept than neighbouring properties and bins not put out for emptying and this had the effect of bringing down the appearance of the area; lack of control of student behaviours and increased in noise and anti-social behaviour; and poor standard of accommodation in some HMOs. Members were also advised that the council held regular liaison meetings with the university and that issues of anti-social behaviour from students were raised at these meetings. He then reiterated the council's approach to assess the need for Article 4 Directions and a threshold for new HMOs in areas with a high concentration when the outcome of the council's

licensing accreditation scheme for HMOs had bedded in and additional new purpose built student accommodation became available, next year.

Discussion ensued. Members commented on concerns about studentification of areas of the city. The head of planning services explained that once accreditation had been completed the council would have a more complete picture of the number of HMOs as reliance on council tax information only showed student only households. He pointed out that HMOs provided accommodation for people with limited choice in the housing market, such as people on low incomes, out of choice, single people or on benefits, and not just students. It was therefore important not to restrict the availability of this type of housing for these people.

During discussion members expressed concern for the immediate problems of residents in areas of the city where former council houses or terraced properties were being converted into shared student housing without regulation and the effect that it was having on the community. Members referred to other university towns where Article 4 Directions had been used to control the expansion of HMOs. Other members supported the recommended approach to keep HMOs under review and wait until the evaluation of accreditation and purpose built accommodation was available before considering the implementation of Article 4 Directions, which could increase the number of HMOs into other areas of the city, ie, moving the issues to other areas, and limit the availability of accommodation for people on low incomes, vulnerable or single people and those on benefits.

Councillor Schmierer said that areas where houses were bought or rented for family use contributed to the community unlike the transient population who lived in HMOs. He considered that the expansion of HMOs needed to be prevented by the use of an Article 4 Direction without delay. Councillor Jackson expressed concern that accreditation did not address the concentration of HMOs in Nelson and other wards around the University of East Anglia (UEA) and considered an Article 4 Direction as the only way forward. He also pointed out that some purpose built student accommodation was dependent on Generation Park being developed. The housing strategy officer explained that the council's scheme was a voluntary accreditation scheme and explained that the scheme did not launch within the proposed timescale because of a technical issue.

Discussion ensued in which the majority of members considered that they needed more information about the use of Article 4 Directions in other university towns (such as Oxford and York) and how regulation would affect small HMOs used by non-students, unable to afford other accommodation. Other members suggested that the city was not in the position of Leeds or Nottingham where whole areas were empty during vacations. The head of planning services reiterated the approach taken and the issues which needed to be considered in implementing an Article 4 Direction, including the financial risk to the council if required to pay compensation to HMO providers.

The panel then discussed the practicality of receiving further background information on HMOs so that it could make an informed recommendation to cabinet at the earliest opportunity.

RESOLVED to ask the head of planning services to provide a detailed report to the panel's meeting on 25 May 2016, setting out the different options available to the

council to regulate houses in multiple occupation and the full implications of issuing Article 4 Directions, and recommend a course of action to cabinet for consideration at the first meeting of the civic year. (Councillor Schmierer did not support this resolution as he considered that the panel was in a position to recommend the implementation of an Article 4 Direction to control change of use to houses-in-multiple occupation to cabinet.)

(Councillor Lubbock left the meeting at this point.)

4. Landscape and Trees Supplementary Planning Document

The planning policy team leader presented the report. Revised wording for the text of the supplementary planning document (SPD) was circulated at the meeting as a result of work conducted on the River Wensum Strategy.

Discussion ensued in which members generally welcomed the SPD. The planning policy team leader said that the SPD would provide a focus for officers and developers. A member asked whether the council's policy for street trees could be strengthened through this document but was advised that SPDs provided guidance on the application of policy but could not change the policy itself. The SPD was primarily to provide good practice advice on landscaping or tree planting when a site came forward for development. Members considered that to strengthen the council's position on street trees it would be useful to insert the full wording of policy DM7 into the SPD. It was also noted that the word "early" should be inserted between "considered" and "on" in the first bullet point of considerations on page 25 of the policy. However members welcomed the consideration of maintenance early on in the process.

The panel then discussed the SPD and considered that fruit trees should be added to the list of plants that provided a good food source for insects and birds on page 18 of the draft SPD.

RESOLVED to recommend to cabinet to adopt the Landscape and Trees Supplementary Planning Document, subject to the following amendments:

- (1) page 25 of the SPD, amend the first bullet point of the considerations to read as follows: "Maintenance considered early on and clear demonstration to deliver" and to set out the wording of policy DM7 in full:
- (2) page 18 of the SPD, include fruit trees in the following sentence:

"Flowering, fruit and berry plants will provide a good food source for insects and birds."

(The chair left the meeting at this point for a short break. Councillor Herries, the vice chair, was in the chair for the remainder of the meeting.)

5. Statement of Community Involvement – proposed revisions

The planner (policy) presented the report and together with the planning policy team leader answered members' questions.

During discussion members expressed concern that members of the public had the maximum opportunity to engage in planning consultations. Members noted that in general consultations over holiday periods, ie August, would be avoided. The SCI would need to be in line with SCIs prepared by the council's Greater Norwich area partners, South Norfolk Council and Broadland District Council and variations would need to be discussed.

A member said that the number of issues in local plan documents was often overwhelming. The planning policy team leader explained that there would be public workshops on topics as the first stage of developing the new local plan in the summer. It was not possible to separate out topics as part out the consultation on the plan. Members of the public living in Norwich could comment on the local plans of the partner authorities.

The panel noted a member's comment that the scrutiny committee could consider scrutinising the methodology of consultations. This request could be made by individual members.

RESOLVED to recommend that cabinet approves the revised Statement of Community Involvement for public consultation during June, and, subject to ensuring that consultations do not take place during August.

CHAIR

Report to	Sustainable development panel	Item
	25 May 2016	
Report of	Head of planning services	5
Subject	Re-establishment of the Greater Norwich Development Partnership and update to the Local Development Scheme 2016-18	

Purpose

To agree a recommendation to cabinet that the Greater Norwich Development Partnership (GNDP) Board be re-established to provide a forum for member oversight and discussion in relation to the preparation of the Greater Norwich Local Plan (GNLP). Also to note the revised timetables envisaged for the production of the GNLP and agree to recommend to cabinet that the Local Development Scheme is updated to reflect them.

Recommendation

That members consider the report and agree to recommend cabinet to:

- (1) endorse the establishment of the GNDP in accordance with the terms of reference attached at Appendix 1 to exercise political leadership for the planning activities carried out jointly by the Greater Norwich local planning authorities, in particular in relation to the Greater Norwich Local Plan; and,
- (2) approve an updated Local Development Scheme, by substitution of the contents of Appendix 2, in place of the relevant sections of the previous Local Development Scheme, for publication under section 15 of the Planning and Compulsory Purchase Act 2004 (as amended by section 111 of the Localism Act 2011).

Corporate and service priorities

The report helps to meet the corporate priorities for a prosperous and vibrant city, a safe, clean and low carbon city and a healthy city with good housing.

Financial implications

There are no direct financial implications.

Ward/s: All wards

Cabinet member: Councillor Bremner – Environment and sustainable development

Contact officers

Mike Burrell, planning team leader (policy) 01603 212525

Graham Nelson, head of planning 01603 212530

Background documents

None

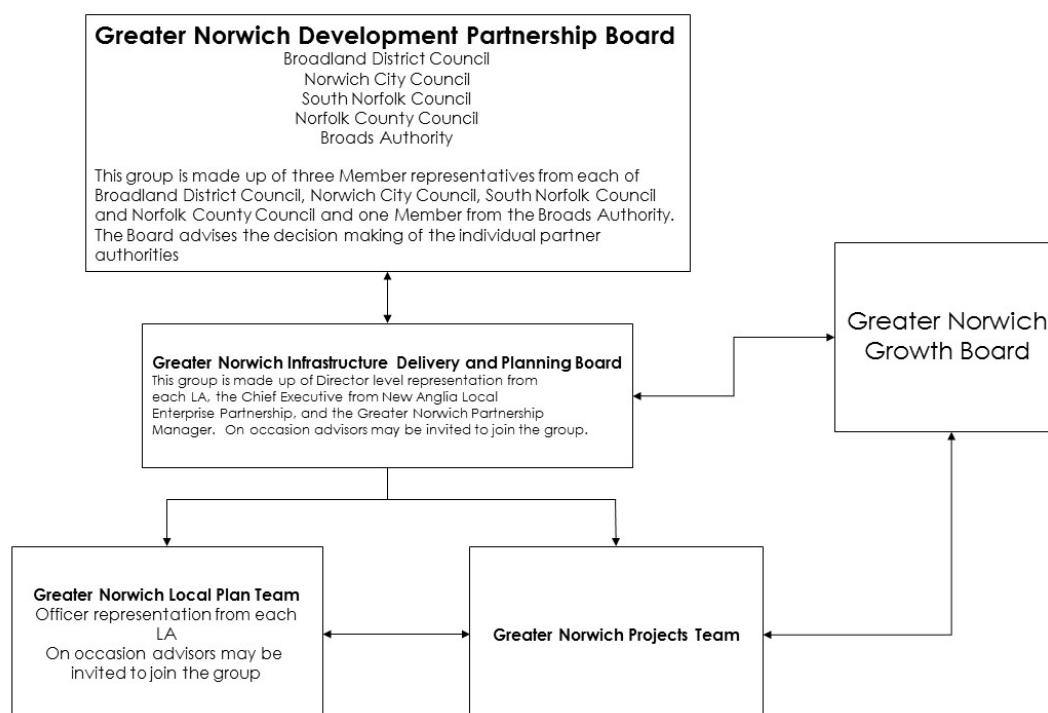
Report

Introduction

1. The Greater Norwich Growth Board at its meeting of 24 September 2015 agreed that the greater Norwich authorities would commence working together on a new local plan for the Norwich area to roll forward and replace the JCS (to be known as the Greater Norwich Local Plan, or GNLP). This was subsequently endorsed by individual councils in accordance with their constitutions. In the case of the city council this was formally endorsed by cabinet on 9 March 2016 by approving the publication of a revised Local Development Scheme (LDS) that included the timetable for the GNLP. This was preceded by a debate at the sustainable development panel on 24 February who recommended this course of action to cabinet.
2. Further to this agreement, work has been continuing with partners on: the preparation of the GNLP (particularly in relation to the call for sites and matters relating to the Sustainability Appraisal), the resourcing of the exercise (with closer working across the local authorities being embedded), and discussion of providing appropriate opportunities for joint member discussion of emerging documents.
3. The latter discussion has resulted in an agreement between the local authority partners to seek authority to establish an appropriate joint member group to provide oversight of the development of the joint Local Plan. Although there is some uncertainty due to the ongoing discussion about devolution and a rapidly changing national framework for planning, the partners have agreed to seek authority to re-establish a GNLP Board to do this. A similar mechanism was considered effective in the preparation of the Joint Core Strategy although it should be noted that some modifications to the previous structure are being proposed to reflect the fact that the Greater Norwich Growth Board now exists.
4. The re-established GNLP Board will meet in public and will make recommendations to the constituent authorities. Decision making remains with the responsible councils. In the case of Norwich City Council this will mean that reports will need to be considered by sustainable development panel, cabinet and full council at various stages of the plan preparation process in accordance with the constitution.
5. The proposed terms of reference for the GNLP Board are attached as Appendix 1.
6. The expectation is that GNLP Board will only be an interim measure and a more permanent arrangement will be established in due course for member oversight and possibly decision making on the GNLP. This is likely to be considered in the autumn following clarity being gained over the nature of any possible devolution agreement. But in the meantime there remains a need to progress work on the GNLP through current procedures so the re-establishment of the GNLP Board is considered necessary to do this.
7. Whilst this matter has been under debate with partners, a revised and updated timetable for the preparation of the GNLP has been agreed. This timetable necessitates some update to the existing Local Development Scheme. The necessary updates are attached as Appendix 2.

Appendix 1 – Proposed Terms of Reference for Greater Norwich Development Partnership Board

Governance and Support Arrangements



The Greater Norwich Development Partnership Board

The Greater Norwich Development Partnership Board will exercise political Leadership for the planning activities carried out jointly by the Greater Norwich Local Planning authorities. This group is made up of three members from Broadland, Norwich City Council, South Norfolk Council, Norfolk County Council and a member from the Broads Authority. The group is supported in its role by the Director level representation from each Local Authority and a series of advisors who will be seconded into the group when necessary.

Membership of the GNDP Board

Broadland District Council
Norwich City Council
South Norfolk Council
Norfolk County Council

} up to three members from each Council, including Leader and Planning Portfolio

up to three members including the Chair of EDT committee

Broads Authority

one member

Substitutes: Members may submit substitutes when unable to attend themselves in agreement with the chair

Frequency: Meetings are held quarterly or more frequently as required.

Responsibilities

- To prepare and monitor a joint Local Plan for the three district local planning authority areas of Broadland, City of Norwich and South Norfolk, to include integrated land-use and transport policies.
- To oversee the work of the Greater Norwich Local Plan team and associate bodies and ensure all bodies work effectively
- To make recommendations to the Councils and Broads Authority on any wider planning matter affecting the Broadland, City of Norwich and South Norfolk administrative areas.
- To advise on the development of the Local Transport Plan (LTP) implementation strategies and on future reviews of the LTP relevant to the area, including the Norwich Area Transportation strategy (NATS).
- To facilitate joint working between the local planning authorities and the local transportation authority on matters of common interest and benefit
- To ensure the Greater Norwich Infrastructure Plan reflects the needs of the Greater Norwich Local Plan

The Greater Norwich Infrastructure Delivery and Planning Board

The Directors are responsible for directing the Greater Norwich strategic planning activity on behalf of the Authorities and ensuring it meets the objectives.

Membership of the Greater Norwich Infrastructure Delivery and Planning Board

Broadland District Council

Head of Planning

Norwich City Council

Executive Head of Regeneration & Development

South Norfolk Council

Director of Growth and Localism

Norfolk County Council

Executive Director of Community and Environmental Services

Broads Authority

Director of Planning and Resources

New Anglia Local Enterprise Partnership

Managing Director

Greater Norwich Partnership

Partnership Manager

Substitutes: Director's may submit substitutes when unable to attend themselves

In attendance at Board meetings

Representatives from the Greater Norwich Local Plan Group and the Greater Norwich Projects Team will attend when required.

Appendix 2

Changes to the published Local Development Scheme for Norwich

The Local Development Scheme for Norwich was published on 10 March 2016. As a result of the ongoing discussions on the revised administrative and governance arrangements for the Greater Norwich Local Plan (as detailed in the report), an amended timetable and production milestones for the plan have been agreed and need to be reflected in the LDS. Accordingly, the following changes are proposed to the Local Development Scheme for Norwich. Subject to agreement by Cabinet, these would have effect from June 2016. The remainder of the Local Development Scheme remains unchanged.

- a) In Section 5 (Key Document Profiles), **delete** the Key Document Profiles table on pages 13 to 15 relating to the Greater Norwich Local Plan and **substitute** the table below. The amended sections are shaded.

5. Key document profiles

Document Title	Greater Norwich Local Plan (GNLP)
Role and content	To provide the strategic vision, objectives and strategy for future development of the greater Norwich area, to accommodate objectively assessed needs for growth and to identify specific sites for development in the period to 2036. The GNLP provides the strategic context for the preparation of lower level policy documents prepared by the three constituent district planning authorities.
Status	Statutory Development Plan Document (DPD)
Conformity	The document must conform with the National Planning Policy Framework 2012 (the NPPF) and with any subsequent review of the Framework. It should also accord with standing advice in national Planning Practice Guidance (PPG).
Geographical coverage	The three districts of Broadland, Norwich and South Norfolk, excluding the parts of those districts falling within the Broads Authority area.
Joint working arrangements (if any)	The plan will be prepared jointly with Broadland and South Norfolk district councils with the support of Norfolk County Council.

Document Title		Greater Norwich Local Plan (GNLP)	
Relationship with adopted local plan(s)		<p>The GNLP will supersede</p> <ul style="list-style-type: none"> a) the Joint Core Strategy (JCS) for Broadland, Norwich and South Norfolk (adopted March 2011, amendments adopted 2014) b) the Norwich Site Allocations and Site Specific Policies Local Plan (adopted December 2014) 	
Evidence required <i>May include selective reviews of the evidence base already in place for the JCS and new and/or updated studies where necessary, dependent on the eventual scope and coverage of the plan.</i>		<p>This is likely to include (but not be limited to):</p> <ul style="list-style-type: none"> - The published <i>Central Norfolk Strategic Housing Market Assessment</i> (SHMA) 2016, and future updates which may be integrated into a combined Housing and Economic Development Needs Assessment (HEDNA); - The emerging <i>Norfolk Housing and Economic Land Availability Assessment</i> (HELAA); - An economic growth study (if not part of the HEDNA); - An infrastructure study; - A new or updated strategic flood risk assessment (SFRA); - An updated retail study; - A new or updated water cycle study; - A new or updated green infrastructure study; - A new or updated open space study; <p>The plan must be accompanied by an independent Sustainability Appraisal (SA) and Habitats Regulation Assessment (HRA) which will draw on, and themselves be part of, the evidence base.</p>	
Production milestones Commence document production Publication of Local development scheme Review, consult on and revise (where necessary) the Statements of Community Involvement for participating districts Call for sites – invitation to put forward specific development sites for inclusion in the GNLP Commission, prepare and publish evidence studies required to support the GNLP		<p>December 2015</p> <p>March 2016 (GNLP timetable amended May 2016) by Summer 2016</p> <p>May – July 2016</p> <p>March 2016 – May 2017</p>	

Document Title	Greater Norwich Local Plan (GNLP)
Complete and publish draft (Regulation 18) plan for consultation: to include issues and policy options and shortlisted development sites	October-December 2017
Complete and publish pre-submission draft (Regulation 19) plan for consultation: to include agreed strategic policies, sites and site-specific proposals.	Feb-March 2019
Assess representations in response to Regulation 19 draft, prepare all formal submission documents	April 2019 – June 2019
Formal submission of GNLP to Secretary Of State (Regulation 22)	August 2019
Examination in public	February 2020
Consultation on inspector's proposed main modifications	June-July 2020
Publication of Inspectors' Report	October 2020
Adoption of the Greater Norwich Local Plan	December 2020
Monitoring and review	Annual Monitoring report and five year housing land supply updates
Governance and Resources <i>Note: The expectation is that the GNDP Board will only be an interim measure and a more permanent arrangement will be established in due course for member oversight and possibly decision making on the GNLP. This is likely to be considered in the Autumn following clarity being gained over the nature of any possible devolution agreement.</i>	Resources A dedicated Greater Norwich Local Plan Team comprising officers from the three constituent district authorities and Norfolk County Council, initially working alongside a Greater Norwich Project Team responsible for wider planning and implementation matters across the area. Governance The Greater Norwich Development Partnership Board will exercise political leadership and oversight for the planning activities carried out jointly by the Greater Norwich local planning authorities. This group is made up of three elected members from Broadland, Norwich City Council, South Norfolk Council, Norfolk County Council and a member from the Broads Authority. The group is supported in its role by the Greater Norwich Infrastructure Delivery and Planning Board with Director level representation from each Local Authority and a series of advisors who will be seconded into the group when necessary. The Directors are responsible for directing Greater Norwich strategic planning activity on behalf of the Authorities and ensuring it meets the objectives.

- b) On page 18, **substitute** the Key Document Programme diagram with the revised programme diagram overleaf.

ANNEX 1

LOCAL DEVELOPMENT SCHEME FOR NORWICH, 2016-19
KEY DOCUMENT PROGRAMME - UPDATED MAY 2016

Document	2015			2016												2017												2018												2019									
	O	N	D	J	F	M	A	M	J	J	A	S	O	N	D	J	F	M	A	M	J	J	A	S	O	N	D	J	F	M	A	M	J	J	A	S	O	N	D	J	F	M	A	M	J				
Preparation of Local Development Scheme						R																																											
ADOPTED DEVELOPMENT PLAN DOCUMENTS IN USE																																																	
Joint Core Strategy for Broadland Norwich and South Norfolk																																																	
Norwich Site Allocations and Site Specific Policies Local Plan																																																	
Norwich Development Management Policies Local Plan																																																	
Northern City Centre Area Action Plan (NCCAAP)						E																																											
Policies Map (+updates)					&																																												
PROPOSED DEVELOPMENT PLAN DOCUMENTS																																																	
Greater Norwich Local Plan			*				S	S	S																																								
PROPOSED NON STATUTORY DOCUMENTS																																																	
Norfolk Strategic Framework (Joint with other Norfolk councils)			*										C	C	C																																		
PROPOSED SUPPLEMENTARY PLANNING DOCUMENTS																																																	
Open Space and Play SPD	A																																																
Heritage Interpretation SPD			A																																														
Trees and Landscape SPD								A																																									
Bethel Hospital Planning Brief (SPD)					*				12	12	A																																						
STATEMENT OF COMMUNITY INVOLVEMENT (Review)								C	A																																								

KEY

General

LDS production/review

Resolution to bring LDS into effect

Commencement of this LDS period

Commencement of individual document production

Adopted development plan documents

Adopted DPDs (local plans) in use

Adopted DPD (local plan) expiry

Policies map update (to delete redundant NCCAAP policies)

Greater Norwich Local Plan (GNLP)

Call for sites

Preparation of draft Regulation 18 plan and supporting evidence

Reg 18 draft consultation stage

Assessment of responses/preparation of Reg 19 pre-submission plan

Reg. 19 publication (pre-submission) stage

Assessment of responses/preparation of Reg 22 submission document

Subsequent statutory GNLP milestones not included in this LDS period

Submission to Secretary of State

Examination in Public

Consultation on inspectors' proposed modifications

Adoption

August 2019

February 2020

June/July 2020

December 2020

Norfolk Strategic Framework (NSF)

Evidence gathering and production of draft framework

Consultation on draft framework

Production of final framework

Adoption of NSF by constituent Norfolk councils

Provisional timetable - may be subject to change

Supplementary Planning Documents (SPD)

Supplementary SPD production

SPD Consultation - draft (Regulation 12)

SPD adoption

Statement of community involvement review (for info)

Consultation on revised SCI

Adoption of revised SCI

Report to	Sustainable development panel	Item
	25 May 2016	
Report of	Head of planning services	6
Subject	Technical Consultation on Greater Norwich Local Plan Draft Sustainability Appraisal Scoping Report	

Purpose

To inform the panel of the content of the Greater Norwich Local Plan draft sustainability appraisal scoping report prior to technical consultation.

Recommendation

Recommend to cabinet that the draft sustainability appraisal scoping report should be published for technical consultation.

Corporate and service priorities

The report helps to meet the corporate priority to provide a safe, clean and low carbon city and the service plan priority to produce a local plan

Financial implications

None

Ward/s: All Wards

Cabinet member: Councillor Bremner – Environment and sustainable development

Contact officers

Mike Burrell , Planning team leader (policy)

01603 212525

Background documents

None

Report

1. Norwich City Council is working with Broadland District Council and South Norfolk Council, with the support of Norfolk County Council, to produce the Greater Norwich Local Plan (GNLP).
2. Legislation requires that a sustainability appraisal is produced for plans or programmes such as the GNLP. Failure to properly complete a Sustainability Appraisal could lead to the GNLP being found unsound at examination by a Planning Inspector or being subject to legal challenge.
3. The key stages of preparing a sustainability appraisal are:
 - a) Develop a scoping report that sets out the context of the Local Plan, describes the baseline economic, social and environmental conditions and establishes a framework of objectives against which the Local Plan policies are evaluated.
 - b) During production of the Local Plan, develop and refine reasonable policy alternatives, discount unreasonable alternatives and assess the effect of policies on the baseline conditions.
 - c) Prepare the sustainability appraisal report, to be published prior to the submission of the Local Plan for examination in Public.
 - d) Reporting and monitoring after the adoption of the Local Plan.
5. The draft GNLP SA Scoping Report, stage a) above, is available on the council's website at
6. The scoping report has taken into account the comments of Lepus Consulting. Lepus Consulting has been appointed as expert advisors for the production of the GNLP SA Report.
7. Before the draft scoping report can be finalised it must be subject to a technical consultation. As a minimum this consultation must invite comments from Natural England, Historic England and the Environment Agency. The consultation must be open for a minimum of five weeks.
8. The views of elected members from each of Broadland, Norwich and South Norfolk on the draft Scoping Report are being sought prior to the technical consultation.
9. Member comments on the draft sustainability appraisal scoping report are invited prior to it being considered by Cabinet and prior to the technical consultation.

Appendix – Greater Norwich Local Plan Draft Sustainability Appraisal Scoping Report

PDF available from separate web link by clicking [here](https://cmis.city.norwich.gov.uk/cmislive/Meetingscalendar/tabid/70/ctl/ViewMeetingPublic/mid/397/Meeting/253/Committee/9/Default.aspx) or on the committee page:
<https://cmis.city.norwich.gov.uk/cmislive/Meetingscalendar/tabid/70/ctl/ViewMeetingPublic/mid/397/Meeting/253/Committee/9/Default.aspx>