

Report for Information

Report to	Norwich Highways Agency Committee 24 March 2011
Report of	Head of Transportation
Subject	Highway Performance Monitoring of the Highways Agency Agreement

Item
14

Purpose

This report describes the performance of the Highways Agency Agreement, for the financial year 2010/2011 up to the end of February 2011.

Recommendations

That the Committee receives and notes the available performance results.

Financial Consequences

Good performance affects local authorities' performance assessments (e.g. via the Local Transport Plan) and hence has a bearing on the levels of government funding available.

Strategic Objective/Service Priorities

The report helps to achieve the corporate priorities of a strong and prosperous city, safe and healthy neighbourhoods and opportunities for all. It helps achieve the service plan priority to deliver the 2010/11 LTP/NATS maintenance and capital improvement programmes.

Contact Officer

Andy Watt, Head of city development services

01603 212691

Background Documents

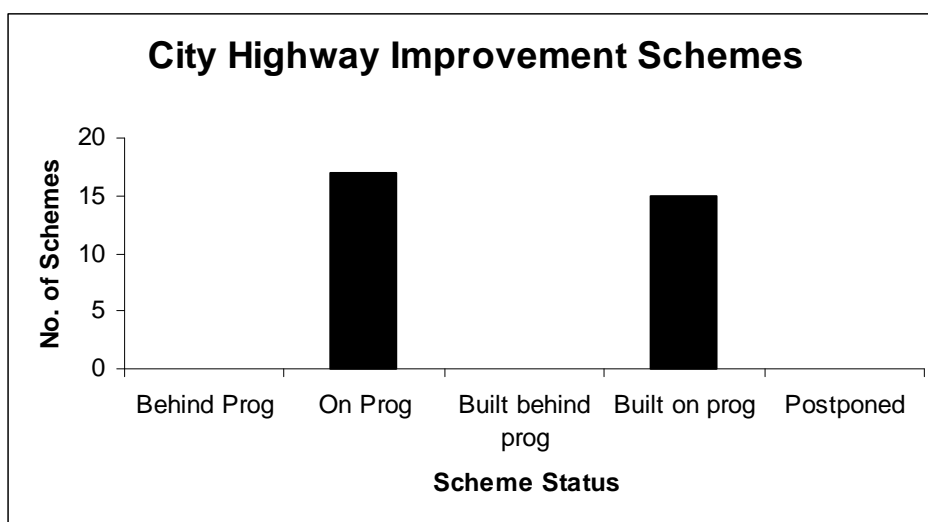
None

Background

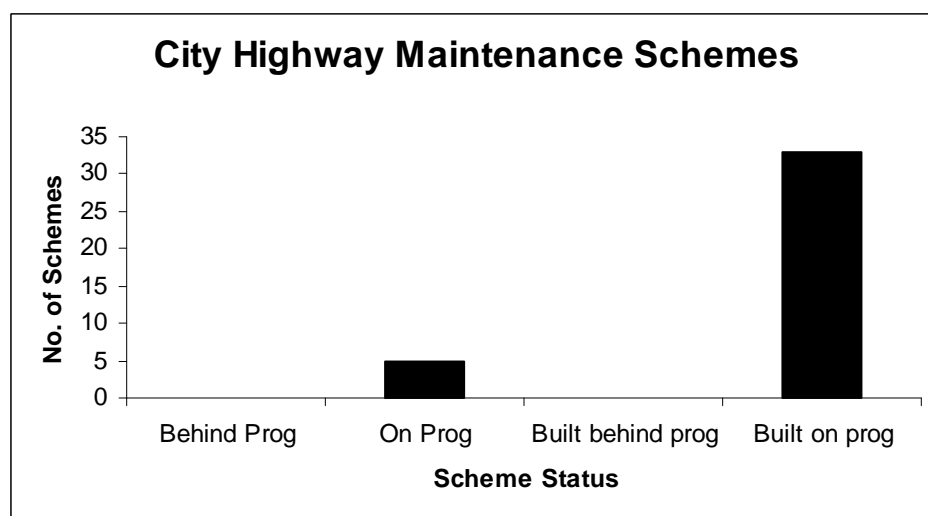
1. The City Council discharges highway duties in Norwich on behalf of the County Council, through an Agency Agreement.

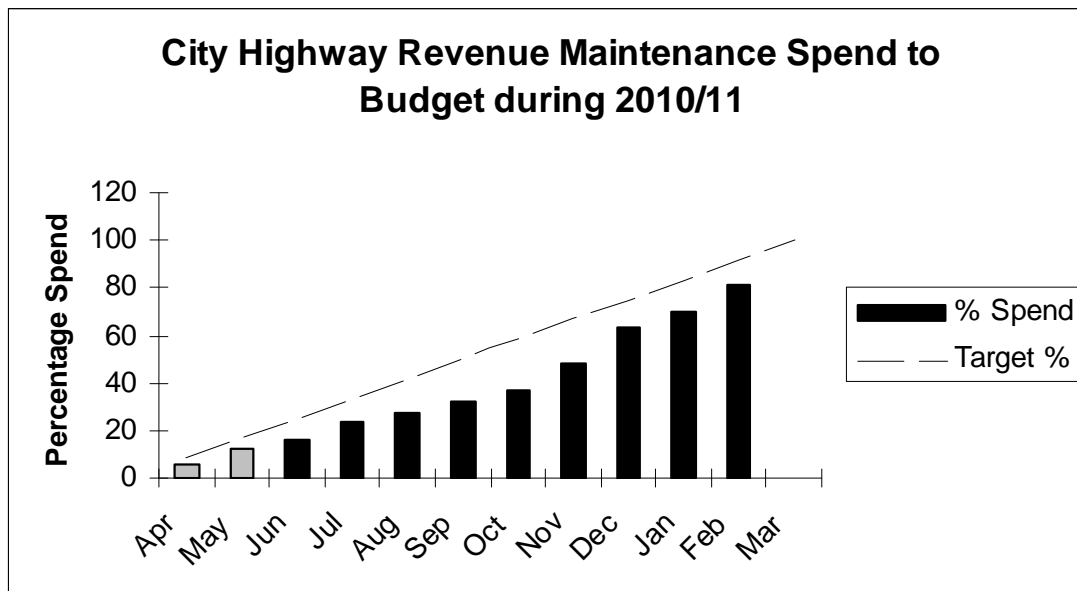
Performance Monitoring of Agency Agreement

2. Details of performance data, any targets, and progress so far this year, summarised under the headings below. Delivery of programmes to targets and budgets/financial control. Works programmes are updated monthly, and progress against targets and budgets reported.
3. *Capital Improvement schemes*: There were 32 schemes in the 2010/2011 programme. Fifteen schemes were substantially complete at the end of February.



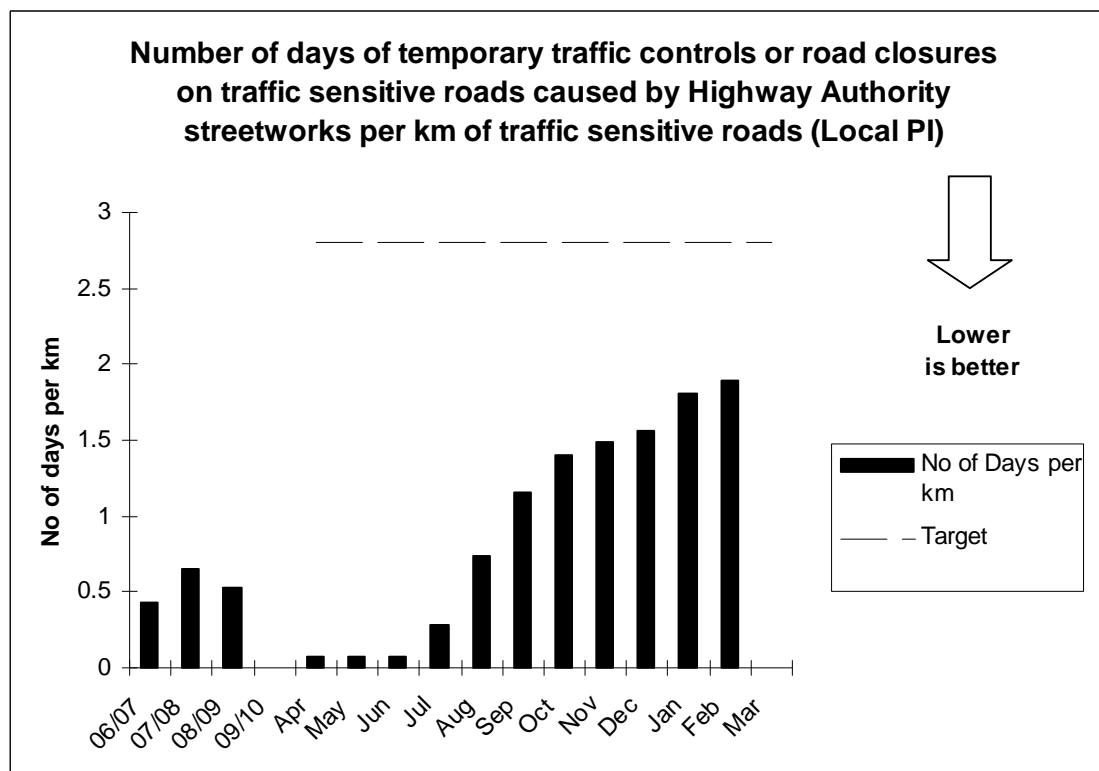
4. *Highways maintenance*: There were 38 schemes listed in the capital maintenance programme. Thirty-three schemes had been completed by the end of February. Approximately 81% of the maintenance revenue budget had been spent by the end of February.



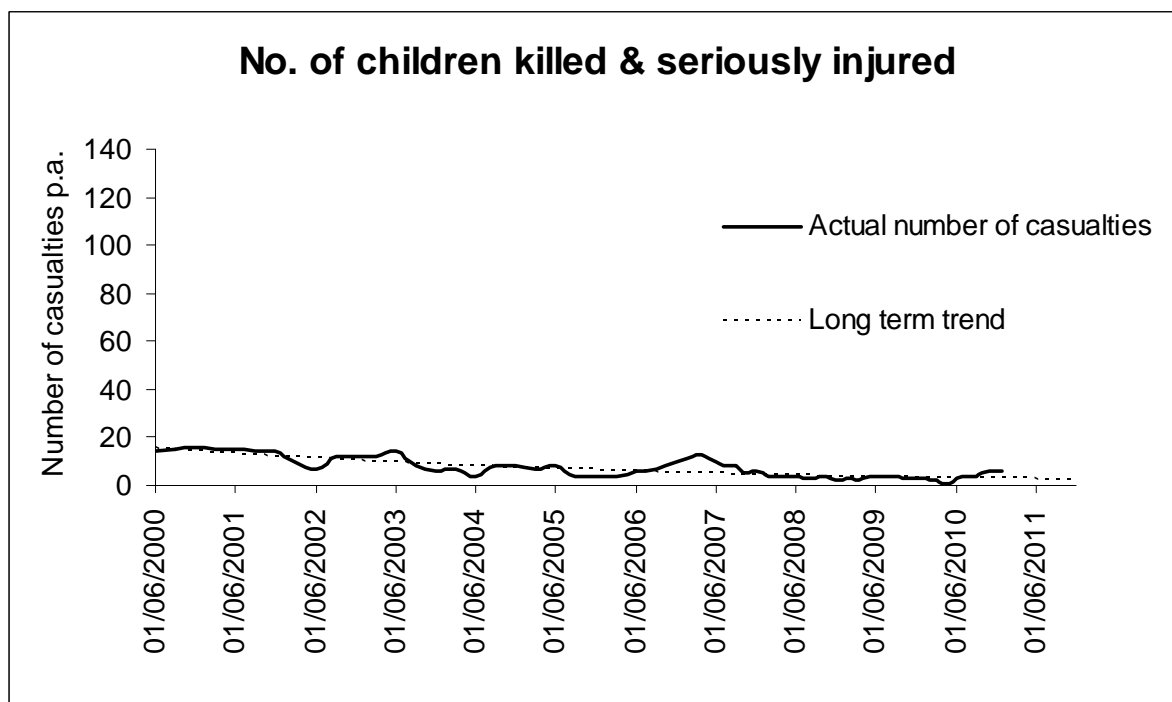
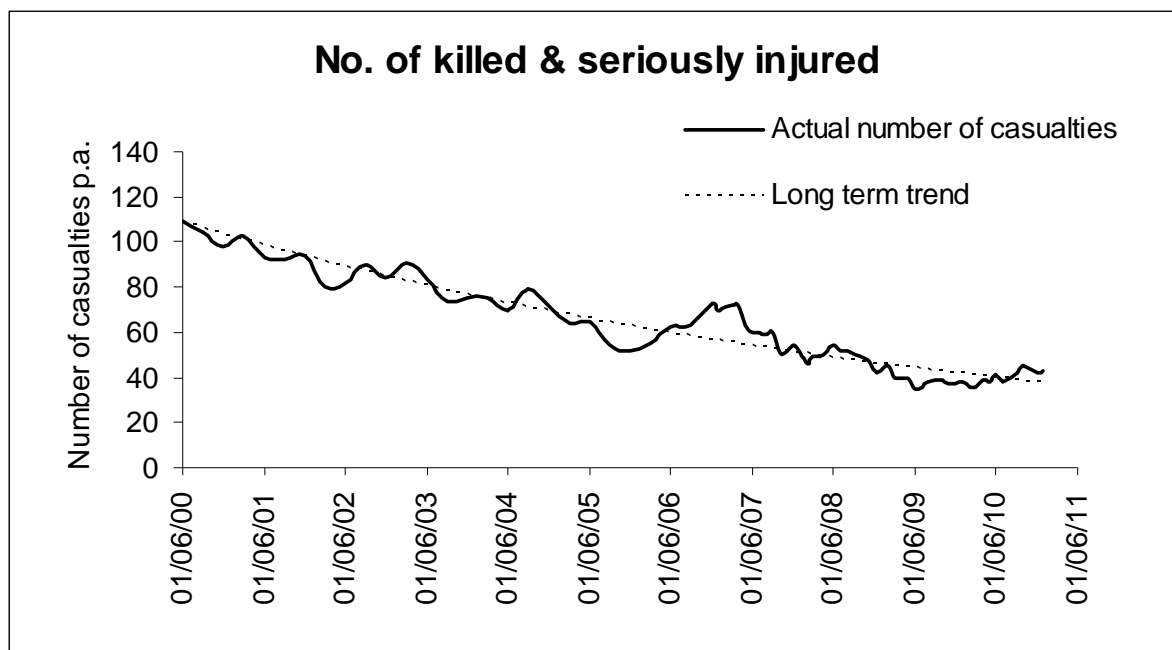


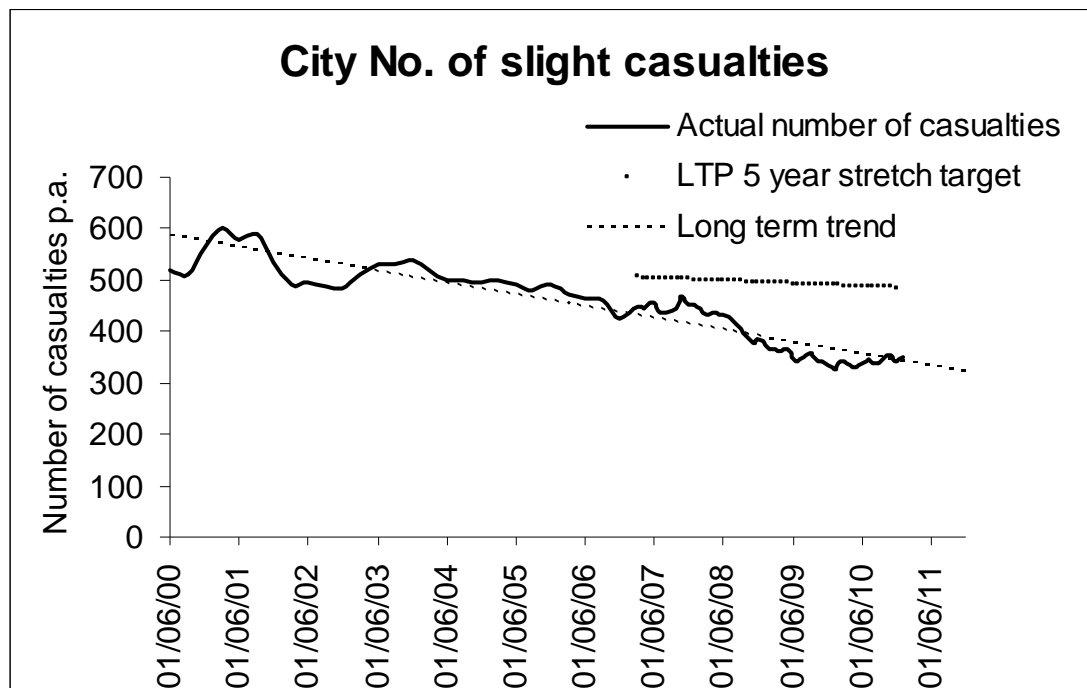
Compliance with standards, codes and procedures

5. Data is collected monthly for a number of national “Best Value” Performance Indicators (BVPIs).
 - ‘Local PI (formerly BVPI 100) - Number of days temporary traffic controls or road closure on traffic sensitive roads caused by local authority roadworks per km of traffic sensitive road’ is 1.89 to the end of February (end of year figure for the City should be no greater than 2.80 for 2010/11); see graph below. The resurfacing work at the Chartwell Road / Constitution Hill Roundabout during the February half-term holiday lead to 5 days of traffic sensitive working.



- 'BVPI 165 – Percentage of pedestrian crossings with facilities for disabled people' the City figure is currently 100%.
- 'BVPI 99 – Road accident casualty reduction' – the figures for the City area to the beginning of May show an improving trend in overall and child killed and seriously injured numbers.

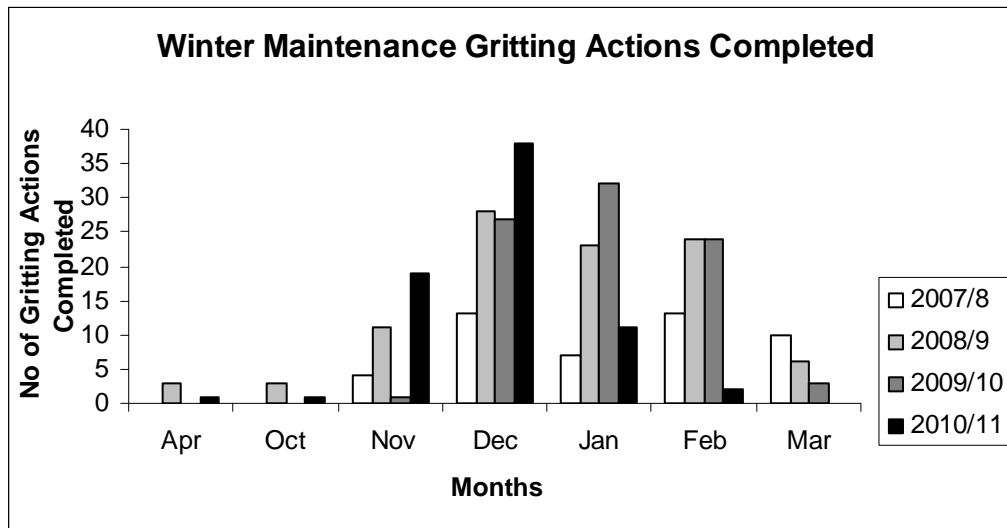




6. Data is also collected monthly for the following local performance indicators (LPIs) to contribute towards the County Council's Service Plans.

- *'The percentage of repairs to dangerous damage to roads or footways which were carried out within 24 hours'* is 100%¹ for 2010/11 to the end of February. The number of reports of dangerous damage to Norwich roads that had been received by the end of February will be available for the meeting.
- *'Percentage of priority routes gritted within three hours of mobilization from the depot'* - The Winter maintenance season commenced in mid-October and lasts until mid-April. A full gritting run for Norwich was required on 1 occasion in April 2010, 1 in October, 19 in November, 38 in December, 11 in January and twice in February. The percentage of actions completed within 3 hours is 99% (City/County target 100%). A mechanical failure of a gritting vehicle's spinner device that spreads the salt caused the extended time for 1 action. With the number of routes gritted changing this year and to ensure the graph below compares like for like data, the number of actions per month will now be recorded rather than the number of routes treated.

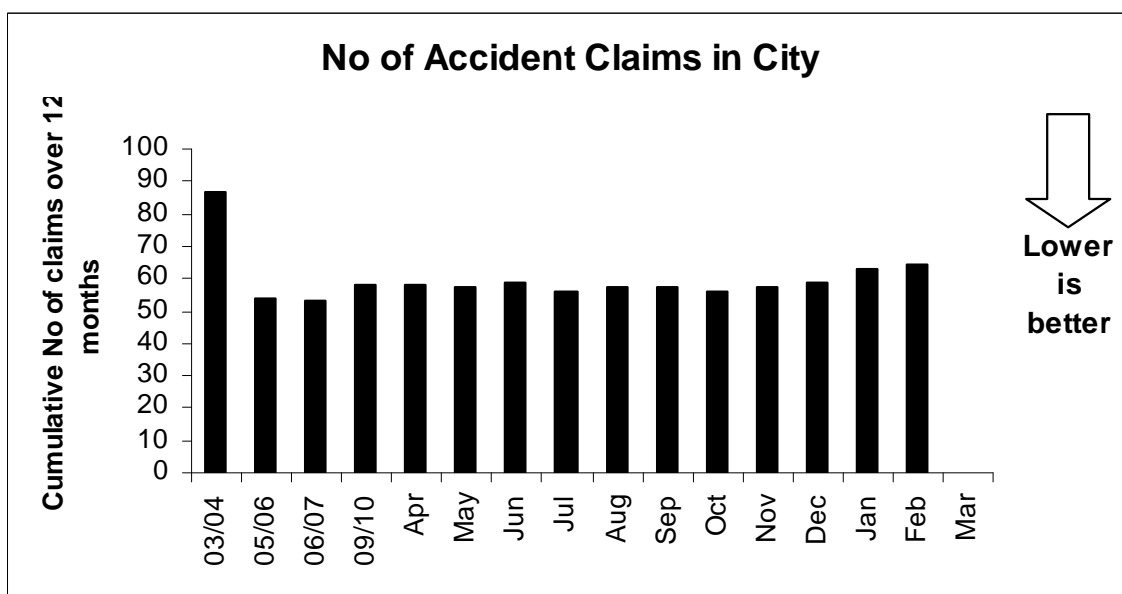
¹ Data subject to verification



- 'The percentage of highway material that was recycled by May Gurney' is not available at present. Discussions are in hand to see if it will be practically possible for the County Partnership to provide this figure for Norwich in the future

Accident Claims

- The number of claims received and the settlement rate of claims for highway and personal injury claims are monitored.
- 'Percentage of personal injury claims successfully defended' is 72% for the claims settled to the end of February, (City/County target for 2010/11 is 75%). 64 claims have been received for the year ending 28 February 2011.
 - 'Percentage of non personal injury claims successfully defended' – is 98% for the claims settled to the end of February, (City/County target for 2010/11 is 75%). 47 claims have been received for the year ending 28 February 2011.



City % of personal injury claims successfully defended

