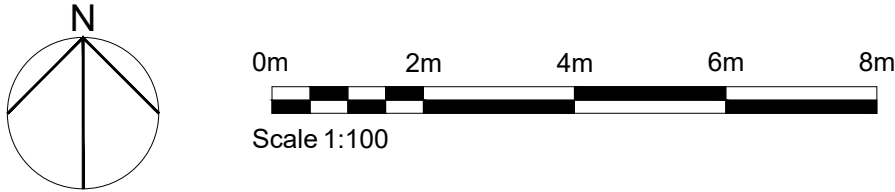


Appendix 1



All dimensions to be verified on site by Main Contractor before the start of any shop drawings or work whatsoever either on their own behalf or that of sub-contractors. Report any discrepancies to the Contract Administrator at once. This drawing is to be read with all relevant Architect's and Engineer's drawings and other relevant information.

© Richard Pike Associates Do Not Scale

Notes:

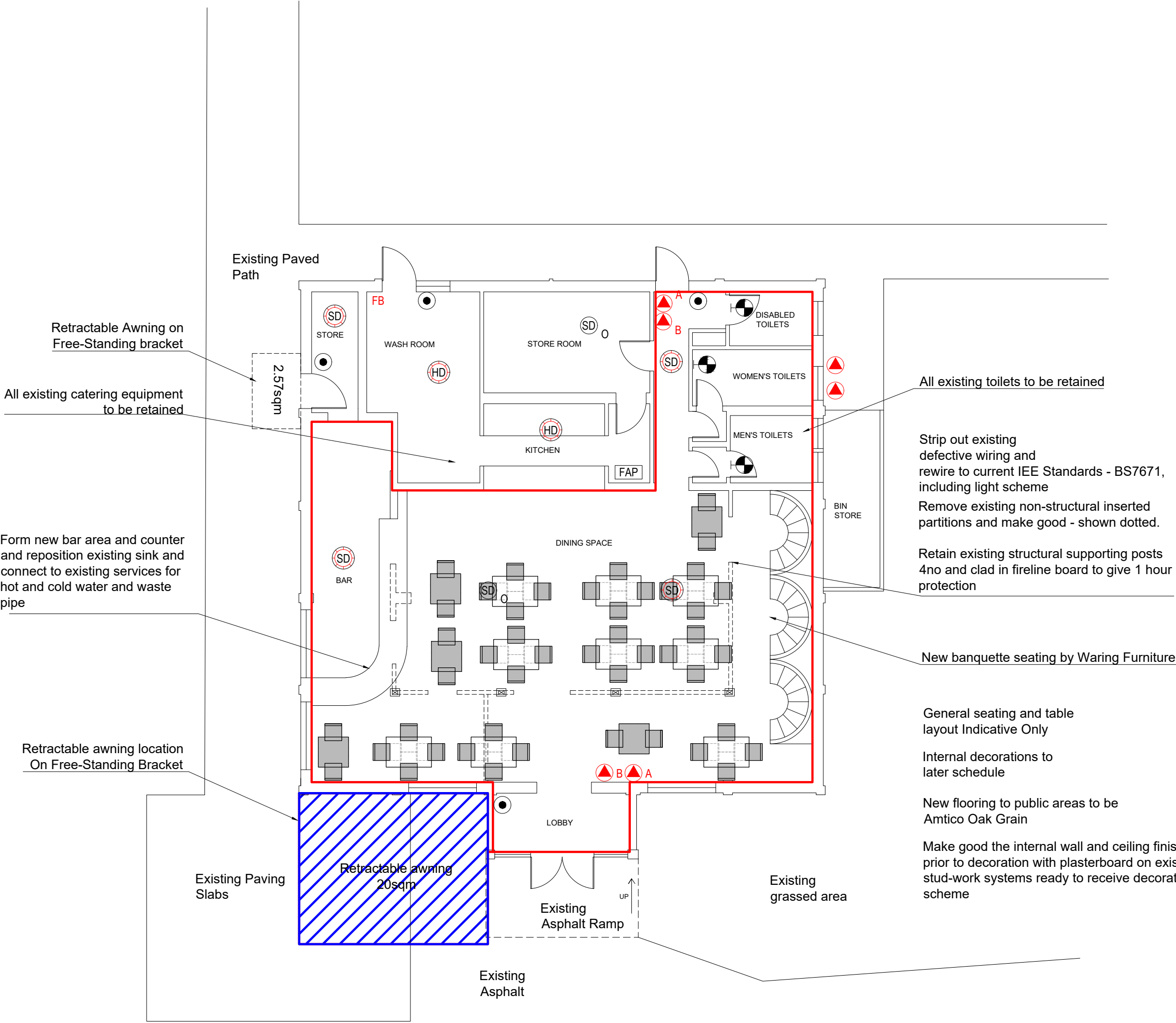
DRAWING KEY

Internal Premises licence boundary

Outside area

FIRE PROTECTION

- EF-bg BREAKGLASS CALL POINT
- EF-bg-k KEY OPERATED MANUAL CALL POINT
- EF-bg-sv BREAK GLASS CALL POINT FOR SMOKE VENT
- EF-fcp FIRE TELEPHONE CALL POINT
- EF-sd SMOKE DETECTOR - 'I' DENOTES IONISATION, 'O' DENOTES OPTICAL
- EF-sd-s SMOKE DETECTOR WITH SOUNDER BASE
- EF-sd-v SMOKE DETECTOR WITHIN VOID
- EF-sd-sv SMOKE DETECTOR FOR SMOKE VENT
- EF-sd-sb SMOKE DETECTOR WITH BEACON & SOUNDER
- EF-sd-d DUCT SMOKE DETECTOR
- EF-sd-sc SMOKE DETECTOR FOR SMOKE CLEARANCE SYSTEM
- EF-hd HEAT DETECTOR FIXED TEMPERATURE - 'R' INDICATES RATE OF RISE, 'IR' DENOTES INFRA-RED
- EF-hd-s HEAT DETECTOR WITH SOUNDER BASE
- EF-hd-sb HEAT DETECTOR WITH SOUNDER BASE & BEACON
- EF-shd COMBINED SMOKE AND HEAT DETECTOR
- EF-bsd-t BEAM SMOKE DETECTOR (TRANSMITTER)
- EF-bsd-r BEAM SMOKE DETECTOR (RECEIVER)
- EF-fd FLAME DETECTOR
- EF-mdh MAGNETIC DOOR HOLD (FIRE ALARM OPERATED)
- EF-fab FIRE ALARM BELL
- EF-sp-c CEILING / WALL MOUNTED SPEAKER
- EF-sp-w
- EF-sp-b BI-DIRECTIONAL SPEAKER
- EF-fas FIRE ALARM ELECTRONIC SOUNDER
- EF-im INTERFACE MODULE - 1 or 2 CONTACTS TYPE 1 - DENOTES INPUT & TYPE O DENOTES OUTPUT
- EF-ri REMOTE INDICATOR
- EF-xfb-c LED/XENON FLASHING BEACON (CEILING MOUNTED)
- EF-xfb-w LED/XENON FLASHING BEACON (WALL MOUNTED)
- EF-xfbs-c LED/XENON FLASHING BEACON WITH SOUNDER (CEILING MOUNTED)
- EF-xfbs-w LED/XENON FLASHING BEACON WITH SOUNDER (WALL MOUNTED)
- EF-fap FIRE ALARM PANEL
- EF-farp FIRE ALARM REPEATER PANEL
- EF-famp FIRE ALARM MIMIC PANEL
- EF-ss SYSTEM STATUS INDICATOR PANEL
- EF-sci SHORT CIRCUIT INDICATOR
- EF-pa PUBLIC ADDRESS SYSTEM
- 2KG C02 PORTABLE EXTINGUISHER
- 6L AFF PORTABLE EXTINGUISHER
- FIRE BLANKET



P2	31.07.19	Outside area changed to blue hatching	AF	RP
P1	04.07.19	First Issue	AF	RP
Rev:	Date:	Description:	Chk:	Apr:



Richard Pike Associates
Building, Design & Planning Specialists

Jonathan Scott Hall
Thorpe Road
Norwich
Norfolk
NR1 1UH
t: 01603 611323
e: info@richardpike.co.uk
www.richardpike.co.uk



Certificate No. GB200372 Registration No. 004471

Project:
Pedro's Restaurant Ltd
Chapelfield Gardens
Norwich, NR2 1NY

Drawing Title:
Floor Plan - Premises Licence

Client:
Surrus Property Company Ltd

Scale: 1:100 @A2 Date: 04.07.19

Project Number: Drawing Number: Revision:

18058 - 1201	P2
Information	