

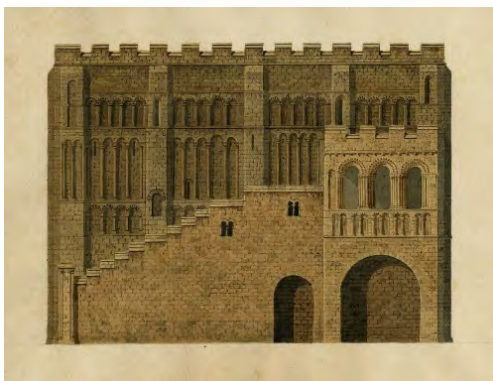
Norwich Area Museums Committee 11 September 2018

## **Norwich Museums briefing: June to August 2018**

### **1. Exhibitions at Norwich Castle**

#### **1.1 The Square Box on the Hill (10 February – 3 June 2018)**

*The Square Box on the Hill* exhibition explored the history of Norwich's iconic Norman keep. Featuring never-before seen archives and artefacts from Norwich Castle's 900-year history, including a wealth of new research uncovered by the *Norwich Castle: Gateway to Medieval England* project, the exhibition showed this landmark in a new light. *The Square Box on the Hill* illustrated the Castle's rich history, from Norman showpiece palace, to county gaol to museum, through a mixture of prints, models, paintings, architectural plans and memorabilia, many of which have never been on display before. The exhibition also showcased the latest plans for the Castle's future as part of the *Norwich Castle: Gateway to Medieval England* project supported by the Heritage Lottery Fund.



William Wilkins (attrib.) Norwich Castle 1795 ©Norfolk Museums Service

#### **1.2 The Paston Treasure: Riches and Rarities of the Known World (23 June – 23 September 2018)**

This major exhibition in collaboration with the Yale Center for British Art reunites, for the first time in three centuries, rare 17<sup>th</sup> century works of art and objects originally featured in the mysterious painting *The Paston Treasure*. Painted by an unknown Dutch school artist, circa 1663, the painting's unique and cryptic subject continues to mesmerize and puzzle art scholars and historians. Featuring an array of exotic treasures from around the world, as well as animals and people, the painting chronicles a fraction of what was once one of the greatest private art collections of 17<sup>th</sup> century England, amassed by Norfolk's Paston family, famed for their medieval letters.

The result of an intensive 10-year research project, *The Paston Treasure: Riches and Rarities of the Known World* sets out to explore the history of the Paston family and how they acquired and lost one of the most distinguished art collections in seventeenth century Britain. It also examines the puzzle of the painting and its anonymous artist, and finally the history of the beautiful Oxnead Hall, of which only a part still stands today. Supported by the East Anglia Art Fund, the exhibition is divided into thematic sections, which are explained and illustrated by relevant objects, paintings and artefacts, the majority of which have been loaned from distinguished national and international public and private collections. Prestigious international lenders to the exhibition include the Metropolitan Museum of Art, New York, the Rijksmuseum, Amsterdam, Chicago Institute of Art, the Victoria and Albert Museum, the Royal Collection and many others. Collectively the exhibition tells both a very Norfolk story and a genuinely international one.



Now in the last few weeks of its run, this exhibition is arguably one of the most ambitious ever displayed at the Castle, involving over fifty lenders and international loans from the USA and Holland. Twelve of the Paston's treasures appear in the painting, of which five still exist. These have been brought back from collections around the world for the first time since the collection was sold in the early eighteenth century, and are displayed with the painting.

The exhibition has enjoyed great critical acclaim, serving to raise Norwich Castle's profile nationally and internationally. The Paston's art collection was once unique in England for its size and splendour, but few people today know

about this fascinating aspect of Norfolk's history. Through the collaboration with Yale, a great many scholars have contributed to the research, leading also to a major publication which will be a lasting legacy of the project. It will ensure that further work can be undertaken and knowledge of the importance of the painting is maintained and increased into the future.

### **1.3 Colman Gallery temporary displays (- 30 December 2018)**

The current extended exhibition in the Colman Project Space is *Magritte: The Lost Painting*. This explores the story of the detective work recently undertaken on NMS' Magritte painting *La Condition Humaine*, where a quarter of a missing Magritte painting, *La Pose Enchantée* was discovered underneath the later work.



*La Condition Humaine* by René Magritte

### **1.4 Timothy Gurney Gallery - Visible Women (-28 April 2019)**

A showcase of work by women artists from both the modern and contemporary NMS art collections. Works are in a variety of media by different artists, including Barbara Hepworth, Jo Spence and Penny Slinger.

## **2. Forthcoming exhibitions**

### **2.1. Armistice: Legacy of the Great War (20 October 2018 - 6 January 2019)**

Supported by the Heritage Lottery Fund and other funding partners including the Town Close Estate Charity and the Norfolk Regimental Museum Trustees, this major centenary exhibition will explore the First World War in Norwich and Norfolk, showing the physical impact on the county, coastal defences and changes in agriculture and industry, alongside stories of the communities and individuals whose lives were transformed by the War.

Celebrating resilience as well as commemorating loss, the rich displays will show fine art and textiles alongside locally manufactured goods. Posters, photographs, archives and interactive displays complement displays of diverse objects drawn from around the county. A series of finely crafted artworks by Paddy Hartley

called *Papaver Rhoeas* focus on the subject of memorialisation, comprising a series of unique poppies.



Brundal Auxillary Hospital 1915

## **2.2. Viking: Rediscover the Legend (9 February – 8 September 2019)**

A major exhibition exploring what it meant to be a Viking and how the Vikings transformed and shaped every aspect of life in Britain, featuring some of the most significant Viking discoveries ever made. A partnership exhibition from the British Museum and York Museums Trust.

## **3. Norwich Castle Events**

### **3.1 Norwich Medieval Mystery Play 2018**

For the second time in 500 years the *Norwich Medieval Mystery Plays* were performed at Norwich Castle and Norwich Cathedral from 18-21 July. The plays were first performed at Norwich Castle in 2016. For 2018 they returned with a larger production, with 14 new stories in two locations, performed in two parts. Mystery plays were biblical stories performed in medieval times with music for local people and represent the beginning of live theatre. Local theatre director Peter Beck researched, wrote and directed the plays. Just as the plays would have been presented centuries ago, members of the local community played leading roles, supported by professional actors. The plays were very well received with strong attendances for both Parts 1 and 2 at the Castle. The audience saw the Castle keep brought to life with music and drama. The props were outstanding, from the life-size papier-mache giant Goliath to the beautiful white feathered angel's wings.



For 2018 the plays included a strong schools element, involving 240 students from four local schools. They learned about Norwich's medieval past and the tradition of presenting mystery plays.

As part of the Activity Plan for the *Norwich Castle: Gateway to Medieval England* project, the intention is to make the Norwich Medieval Mystery Plays a bi-annual event with the next play scheduled for 2020, when the redeveloped keep is due to re-open.



### 3.2. Summer Holiday Family Programme at Norwich Castle

This summer Norwich Castle's Treasure! programme offered a hoard of exciting crafts, activities and trails inspired by the Paston Treasure painting and the accompanying exhibition. Highlights of the summer programme included:

- *The Paston Puzzle*—an interactive investigative drama with actor Neil Paris
- *Science Shorts* – mini science sessions developed with colleagues from the UEA Biology Department
- *Sound scramble* – matching sounds to objects in the painting including the sound of a lobster under water!
- Partnerships with Norfolk Record Office (record your family tree) and Norwich Cathedral (stained glass windows)
- NCC Community Learning and Information Service provided a string of activities relating to the *GoGo Hares* located at the base of the Castle bridge, which was painted with the story of Boudicca.



## 4. Strangers' Hall

### 4.1 Summer holiday programme

A varied programme of events has been on offer at Strangers' Hall over the summer months, including the *Busy for Lizzy* activities commemorating the Royal progress of 1578, when Elizabeth 1 was entertained in Norwich. Visitors were able to try a range of crafts and enjoy a *Bed-staves to Bolsters* trail, write a welcome speech, make fine ruffs and learn Elizabethan dances.

Staff also delivered a programme of pre-booked walking tours including *Norwich in the Time of Elizabeth I* on 19 July and 16 August.

### 4.2 Toyroom redisplay project

Staff are continuing to work on a project to redisplay the Toyroom collections at Strangers' Hall and increase access to the important toy collections. A programme of visitor consultation has been completed and outline design plans are currently being developed. It is anticipated that a funding application will be made to the Heritage Lottery Fund in 2019.

## 5. Museum of Norwich at the Bridewell

### 5.1 Refugee Day

The Museum of Norwich at the Bridewell is grateful to the Freeman of Norwich for their support once again for two key events in the summer calendar. On the 21 June the Freeman supported activities for Refugee Day which included celebrations of Norwich's rich textile heritage and the contribution that immigrants have made to the development of the trade. Over forty students working with Norwich-based charity English + were treated to a demonstration of weaving on

the restored Jacquard loom. Many in the group were particularly interested in the beautiful collection of Norwich shawls making connections with styles of dress in other countries.



## 5.2 Freeman Fortnight

As in 2017, funding support from the Freeman of Norwich enabled the museum to open free for visitors a fortnight from 24 July to 4 August. Despite high temperatures during this period, staff welcomed over 2,000 visitors. 48% of visitors surveyed said they had never visited the museum before, with the majority of those (98%) saying they would visit again. The Museum also participated in the Norwich-wide *GoGo Hares Trail*, with two baby hares drawing visitors, as well as a tiny hare and tortoise trail inside the museum.





### 5.3 Norwich Pride

Once again this summer, the Museum of Norwich supported Norwich Pride. For 2018 the museum showcased a recently acquired object from Norwich cartoonist and activist David Shenton – the *Duo Shirt*. David explained how and why he made the shirt *'It's made from six shirts that constitute the Pride rainbow, the two middle sleeves are sewn together as one, so hand holding is unavoidable, blatant and the integral function of the garment. I made it and we wore it at London Pride in 2013 to celebrate Equal Marriage on the horizon.'* This object, alongside the *Duvet of Love* took pride of place for the duration of the weekend.



### 5.4 Escape Room games

*The Merchants' Vaults* escape game opened at the beginning of June and from the end of July an evening opening on a Saturday was introduced. Evening games will shortly be added on Friday evenings at 4pm, 6pm and 8pm. Reaction to the new game – which is based exclusively on the collections of the Museum of Norwich – has been hugely positive with two of the country's most experienced escape game players describing it as: *"Absolutely top-notch. A wonderful mix of history, story and creative, clever, varied and satisfying puzzles! We loved every second of it - only wish we could play it again!"*





## **6. Learning Team activities and projects**

### **6.1 The Castle Project at Norwich Castle with Norfolk Youth Offending Team**

This activity marks the second suite of programmes that Norwich Castle has hosted in collaboration with the NCC Youth Offending Team in 2018. The partnership dates back to 2004 when an annual creative project was established to develop team working skills in young offenders and confront perceptions of spaces that could be seen as being linked with authority. Many of the young people have low self-esteem, which is often challenge in itself. The first suite of these sessions ran for 11 weeks, including a celebration evening in the final week. It was so successful that a second, shorter suite of sessions was proposed as an appropriate next step rather than waiting to run the sessions again the following year. The 2018 summer suite of sessions ran with the same format as before, with each cohort having a set of two two-hour workshops running on consecutive Wednesdays, with the outcome of making a clay object inspired by the Museum's collections.

The first week of the activity enabled the young people to explore and engage with the galleries and collections and create a clay object in response to what they had seen. The second week offered an exclusive tour— to the dungeons or the battlements—or an exciting backstage glimpse of the armoury. This offer promoted a reason to return. In the second session the object created was completed or decorated. The sessions were developed and run by Susie Childerhouse from the Norwich Castle learning team and artist Rachel Daniel.

One young participant named Charlotte was able to develop her interest in fossils and rocks. Dr David Waterhouse, NMS Senior Curator of Natural History devoted time with Charlotte, looking through samples of rocks that she had brought in alongside examples in the NMS collection. This resulted in a real boost to her confidence. Charlotte will be returning with some of her own fossils for Dr Waterhouse to examine.

The final project celebration event was very successful. The objects created by the young people were set up in the Cotman gallery, with the paintings from the Norwich School as a backdrop. Rachel displayed objects within groups that complemented each other as well as some of the objects that were used within the programme itself. The event was attended by three of the young people, who received a certificate that can be used with a CV when looking at work or college applications.

In the future NMS intends to deliver a YOT programme on a termly basis. There are also further partnerships to be explored with other agencies such as the Stonemason's Guild of St Stephens and St George, who are interested in working with young people whom 'traditional' education has failed to engage. It is hoped that contact will be maintained with some of the young people after their time with YOT has ended, possibly through voluntary opportunities within NMS

and other opportunities through the Kick the Dust project. Initial steps towards this have already been taken with one of the young people. Other opportunities such as a Takeover Day, where different groups of young people are involved, will be developed during the autumn.

## **6.2 Norwich Castle History Teacher Conference**

Over 25 secondary school History teachers from across East Anglia attended a conference held at Norwich Castle on July 12. Dale Banham, Deputy Head teacher of Northgate High School in Ipswich, delivered the opening address, 'How Key Stage 3 can be tweaked to help raise attainment at GCSE'. Christine Counsell, former teacher trainer at Cambridge University and Director of Education at the Inspiration Trust, gave the closing address, 'What is Key Stage 3 history for?'

Teachers were shown how Norwich Castle can support them in their teaching of the Key Stage 3 History. Delegates then had the opportunity to join a variety of tours and workshops which showcased how a visit to the Castle can be relevant and engaging to their students. Sessions included workshops on our current Key Stage 3 events:

- William I: Hero or Villain?
- Storming the Castle (a Maths and History investigation into the siege of 1216)
- The Changing Face of Norwich (a Geography and History event)
- Slavery
- Norwich in the Industrial Revolution
- First World War

All teachers who completed evaluation forms rated the conference Outstanding or Good. This is the second conference of this type organised by the NMS learning team, who plan for it to be an annual highlight for secondary history teachers in the region.



### 6.3 New 'Knight Club' opening!

Norwich Castle is pleased to announce its inaugural *Knight Club*, which will commence in September. *Knight Club* is a new initiative, seeking to bring together historical knowledge and sports during six two-hour sessions held at Norwich Castle. Participants will discover the secrets of medieval arms and armour, tournament combat, battle tactics and many other skills necessary to be a successful knight. Each session will be led by a trained instructor, using specially designed protective equipment. Sessions are suitable for children aged 8-11.

The idea for this offer grew out of the successful Arms and Armour sessions offer at the Castle, with evaluation demonstrating how engaging this subject is. The Keep project Activity Plan development phase enabled staff to pilot a range of activities to explore the subject further—the Knight has proved a popular figure with museum audiences and staff will be using him as the 'friendly' face of the medieval period for further themed events and days.



### 6.4 Chatterbox News

The Learning Team has begun to develop a relationship with Chatterbox News who create recordings for the visually impaired community in Norwich. Alongside their talking newspapers they conduct interviews on a variety of topics including local history. Recently Chatterbox News contacted NMS regarding their contributing to this series. As well as creating their own magazine podcast, individual interviews are also made available to Future Radio, hospital radio and other talking newspapers. NMS Visitor Programme Manager Anna McCarthy met

with one of the Chatterbox team who came to conduct an interview about The Paston Treasure exhibition and events programme. There are now plans in place to contribute regular museum-based interviews. The podcast will appear in the next few weeks at: <https://www.cbtn.org.uk/listen-now/chataround-magazine>

## **6.5 A-level Biodiversity Conference at Norwich Castle**

*This conference has been designed for us and it provided an excellent message, commented one of the A-level delegates*

In 2010, the UN International year of Biodiversity, NMS learning staff met with colleagues from the Norfolk Biodiversity Information Service (NBIS) to plan an A level conference, with support from UEA, Norfolk Wildlife Trust (NWT), the Broads Authority (BA) and others. The endeavour has continued for nine years (all within the UN International decade of Biodiversity) and has gone from strength to strength, with the exciting recent addition of a Nobel laureate as a keynote speaker. On his second appearance in this role, Dr Jeff Price's keynote speech, 'Biodiversity – why should we care?', was a gallop through the topic, including remarks on the important role of museum Natural History collections and the vital (but endangered) status of traditional practices of Natural History in the academic study and practice of maintaining the earth's biodiversity. After his keynote, the 70 A level students from all over Norfolk, attended workshops led by Dr David Waterhouse, as well as colleagues from key partner organisations.

*One teacher said: This event inspires sixth formers, opens their eyes to the truth beyond the curriculum and gives them inspiration ready for university applications. It was the first time I've seen the historic collections – they were mind blowing – a modern resource rather than Victorian legacy... This event has no accessible equivalents and is therefore invaluable to our students.*

## **6.6 Courtroom Dramas**

The partnership between NMS and the Springboard East Theatre Company has strengthened during 2018. Springboard have researched and scripted real-life trials that occurred in the historic Shirehall courtroom. Three dramas have been produced to date: the 1829 murder trial of John Stratford, the Dumpling Poisoner; the 1820s Downham Market food rioters; and a new drama featuring local suffragette Miriam Pratt who was accused of arson.

Feedback from visitors has been excellent and the performances have been very popular. In September we have project funding for a series of dramas for secondary schools.





## 6.7 HLF Kick the Dust programme

The Heritage Lottery Fund has now confirmed a grant of £776,500 for the project Norfolk Journeys, under the HLF's new Kick the Dust programme, with formal Permission to Start being issued on 17 July 2018. This consortium project is being delivered in partnership with YMCA Norfolk and Creative Collisions (a youth arts network based in Great Yarmouth). The project aims to engage with 11-25 year olds – including those most hard to reach - during a four year period from 2018-22. Through the project the young people will be able to participate in a range of structured heritage activities that will develop their skills, experience and confidence.

Recruitment of the HLF- funded Project Coordinator and x3 Project Worker posts is currently underway.

A summary of what the project aims to achieve:

“This project will create a model that will facilitate sustained engagement with the young people of Norfolk, including those most hard to reach. NMS will work with YMCA Norfolk and Creative Collisions, two organisations with a strong record of engaging the most vulnerable young people. Young people will create an individual journey into active engagement with Norfolk's heritage, using structured progression pathways based around a menu of options, tailored to meet individual needs. Specialise mentoring and the support of NMS will ensure young people reach their potential and achieve their aspirations. Outcomes for young people will include certificated skills and training, enhanced employment opportunities, active involvement in programming and a chance to shape the direction and governance of heritage organisations.”



The new project logo being used on social media accounts

## **6.8 Norwich Learning Manager**

Colly Mudie is retiring from her role as Norwich Learning Manager following 17 years of service to NMS, based at both Norwich Castle and Gressenhall Farm & Workhouse. The recruitment process for her successor will commence during September.

## **7. Other Developments**

### **7.1 Registrars wedding offer at Norwich Castle**

The Registrars weddings offer at Norwich Castle continue to perform strongly with the number of bookings being up year on year. 2017-18 saw a total of 622 ceremonies conducted at Norwich Castle. This was an increase of 5% against the previous year.

### **7.2. History Mystery Escape Room games at the Museum of Norwich**

NMS commenced its new working relationship with local company History Mystery in June this year, with 'escape room' games being hosted at the Museum of Norwich. The bookings started off being available during normal museum opening hours only. However due to demand, games are also now being booked for Saturday evenings. It is anticipated that in the coming months Friday evenings and Sundays will also be made available for bookings.

The Museum of Norwich game, called The Merchants' Vaults, is linked to the collections within the museum and sees players, 'trapped' in the past with no money. Thankfully, Norwich has a long history of thriving industries and it's up to the team to find a way to use them to survive and make it back to the present. Teams of between two and eight players have exactly one hour to master the secrets of Norwich's industrial past before time runs out. A series of puzzles and challenges are scattered through four evocative underground rooms, each

focused on a different industry, reflecting the themes of the museum above. Fantastic settings and authentic looking props add to the atmosphere and intrigue.

All participants have thoroughly enjoyed the games and there have been positive reviews on Trip Advisor.



### **7.3 Norwich Castle external lift improvements**

After a lengthy spell out of commission due to a major fault, the external Castle lift is currently operational. Following the tendering process for the full refurbishment of the lift funded through the NCC capital programme, there will be a 4 month lead time on the fabrication of the new lift carriage. Work to undertake the refurbishment of the lift will commence in early winter, with completion scheduled for January/February 2019. The refurbishment project will include a new lift carriage, new electric motor operating control systems to replace the current hydraulic systems, improvements to both entrances of the lift and works to eradicate water ingress.

### **7.4 Twilight Tickets analysis at Norwich Castle**

Following discussion at the last meeting of the Area Museums Committee, a basic analysis of the *Pop in for £2 Twilight Ticket* at Norwich Castle was undertaken in summer 2018, with 195 visitors who purchased Twilight Tickets being sampled over two months of the summer. The analysis was as follows:

**54% of Twilight Ticket purchases were from visitors from NR postcodes**

**Of those within the NR postcodes:**

73% had visited before  
27% had not visited before  
69% were from the Greater Norwich area  
31% were from the wider County

**Of those who had visited:**

78% had previously visited within the last year  
22% had not

51% were in groups of 2 or more visitors  
49% were single visitors

**46% of Twilight Ticket sales were from visitors outside of Norfolk.**

**Of those visitors outside of Norfolk:**

82% had not visited before  
18% had visited before  
20% were international visitors  
80% were UK visitors from outside Norfolk

**Of those who had visited before:**

98% had not visited in the last year  
2% had

84 % were in groups of 2 or more visitors  
16% were single visitors

## **7.5 Opportunities in Work and Learning**

The Opportunities in Work and Learning (OWL) initiative which has been pioneered at Norwich Castle has been very successful. Harlan, who has been on placement at Norwich Castle since January, has been the focus of a front page article in the *Independence Matters* publication.

A copy of the article will be circulated during the meeting.

## **7.6 Conservation of the Winfarthing Anglo-Saxon Pendant**

A nationally-significant Anglo-Saxon gold treasure found in a Norfolk field has been saved for the nation following a fundraising appeal. The grave assemblage was unearthed by a metal-detectorist in a field at Winfarthing, near Diss, in 2014.



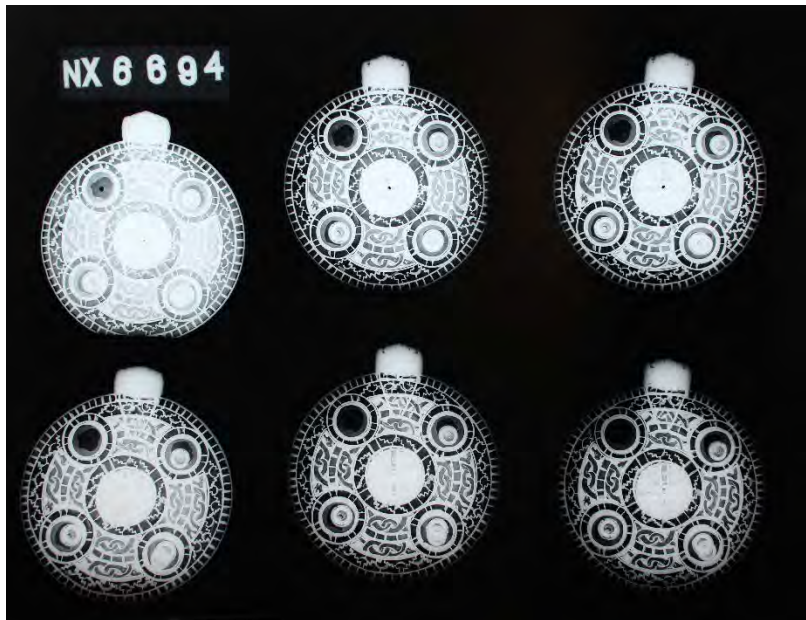
The grave included a necklace made up of two gold beads, two pendants made from identical Merovingian coins and a gold cross pendant inlaid with delicate filigree wire. Most remarkable was a large pendant worn lower down on the woman's chest. Made of gold, it has hundreds of tiny garnets inlaid into it, with interlacing beasts and geometrical shapes.

For more information on the discovery please see:

<http://www.edp24.co.uk/features/amazing-anglo-saxon-pendant-joins-the-ranks-of-major-treasures-discovered-in-our-region-1-3972534>

The find was declared Treasure under the 1996 Treasure Act and was valued by the government's independent Treasure Valuation Committee. This prompted a public appeal by the Friends of Norwich Museums to raise the money to save it. With help from a grant from the National Heritage Memorial Fund (NHMF), Art Fund and the Friends of Norwich Museums, the money was been raised and it is currently on display at Norwich Castle Anglo Saxon gallery before it goes on loan to the British Library Anglo Saxon Kingdoms: Art, Word, War 19 October- 19 February 2019.

The assemblage was received by the Conservation Department following excavation in 2015. Initially this was to pack the object appropriately for storage and transportation for its safe journey to the Treasure valuation committee. A radiograph was taken of the assemblage in our first stage of investigative work to assist in the valuation process. This helped ascertain the technology of the object which eventually assisted in the cleaning and conservation on purchase in the summer of 2018.



Radiograph of the pendant

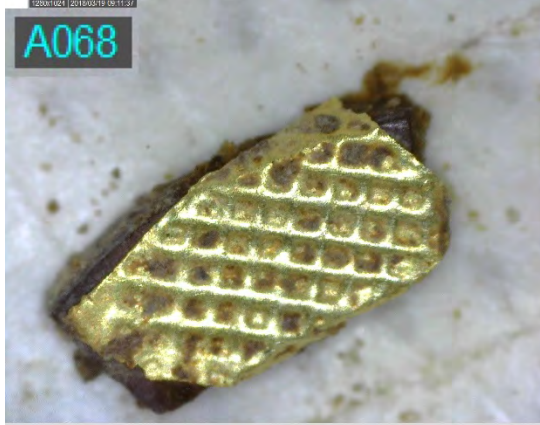
The pendant is a gold disc inlaid with garnets, with a garnet inlaid central boss and four radiating bosses. On the reverse are corresponding garnet inlaid studs. The pendant was covered with hardened soil, sand and iron corrosion

product. The grave goods had not been cleaned or over handled prior to conservation treatment. Initial assessment of the pendant revealed how crucial this minimal initial intervention had been, as many of the garnets, which sit in individual cells often measuring less than 1x1 mm, were only held in place by dry and sandy soil from which the pendant was excavated. This was also the case for the central boss, which sat loosely on the surface of the pendant. Loss of many of the garnets would surely have been the case if cleaning had been attempted immediately on discovery.



The pendant before conservation

The pendant was cleaned cell by cell under the microscope, using very fine tools. Small quantities of alcohol were introduced using brushes and purified cotton wool swabs to soften or remove residues of soil. The majority of the loose garnets, some broken, had 'collapsed' into their cell, which had then filled with soil. This resulted in the waffled gold foil under the garnet being either loose or crushed. In order to re-secure the garnet, the garnet and the gold foil had to be lifted out, cleaned and replaced. Some garnets had foil wrapped around their underside, pinched around the edges, probably to help wedge the garnet in its cell. This accentuates the importance of working under high magnification, understanding the technology of the object being worked on and the importance of a conservator's steady hand. The garnets were painstakingly adhered in situ. Once the obverse was stabilised, the object could be turned over and the reverse worked on.



Garnets 'wrapped' in gold foil.



Object conservator Jonathan Clark ACR working under high magnification and using a further digital microscope to aid the assessment and stabilisation





Conservation completed and all garnets secured

Meticulous record keeping is essential during a conservation treatment process



The reverse of the pendant cleaned and stabilised

### **7.7 New Curator of Modern & Contemporary Art**

Dr Rosy Gray has recently been appointed to the post of Curator of Modern & Contemporary Art. Prior to joining NMS, Rosy worked for the Ferens Art Gallery



in Hull and as a freelance curator. Rosy has previously worked for NMS, based in the Fine Art department.

## **8. Visitor Numbers**

After an exceptional year in 2017/18 with record breaking visitor numbers of 222,260 at Norwich Castle, this financial year sites have seen a decline in visitor numbers when comparing year on year. The heatwave experienced across summer 2018 has also been impactful, resulting in a 7% decrease in visitor numbers at Norwich Castle to the end of July.

The Museum of Norwich and Strangers Hall have seen a 20% decrease in visitor numbers compared to last year. This is largely as a result of a 32% reduction in visits across the two sites for the Freeman event in July and this is mainly attributed to the weather.

Detailed visitor numbers will be circulated at the meeting.

### **Report contact:**

Dr Robin Hanley  
Assistant Head of Museums (Head of Service Delivery)  
Norfolk Museums Service  
Shirehall,  
Market Avenue,  
Norwich NR1 3JQ.  
Tel: 01603 493663  
Email: [robin.hanley@norfolk.gov.uk](mailto:robin.hanley@norfolk.gov.uk)