



NOTES

- 1:1 Year flood capacity
- 1:30 Year flood capacity
- 1:100 Year flood capacity
- Wildlife ponds 600 - 900mm deep
- Plant colonization layer (See landscape schedule)
- Cut line for the lagoons
- Proposed shrub and tree planting (See landscape schedule)
- Junction shrub and tree planting (full details within 14/00875/D application)
- Proposed geo-grid footpath
- Chestnut paling fence 900mm high
- Fill line for the lagoons
- Existing informal footpath line
- Proposed informal footpath line (set out with timber edging and aggregate as extracted from lagoon construction)
- Temporary Swale
- Existing hedge
- Line of drainage pipe, 600mm diameter line of disturbance 900mm over the pipe. Cut and fill construction, minimal disturbance to the existing vegetation. (Except in CEZs, see Arboricultural method statement for full details)
- Extent of the road construction corridor (25 meters maximum)
- Temporary Bund
- Line of Protective Fencing - in accordance with Arboricultural method statement
- Construction exclusion zone - signed not fenced
- Temporary Ground Protection in accordance with Arboricultural method statement

© Crown Copyright and database right 2014, Ordnance Survey 100019747.

REVISIONS

No.	Date	Notes	Int.	Ckd.
A 15.08.14		Footpath location amended		EH
B 19.08.14		CEZ areas extended		EH
B 19.08.14		CEZ line amended, drainage pipe note revised		EH

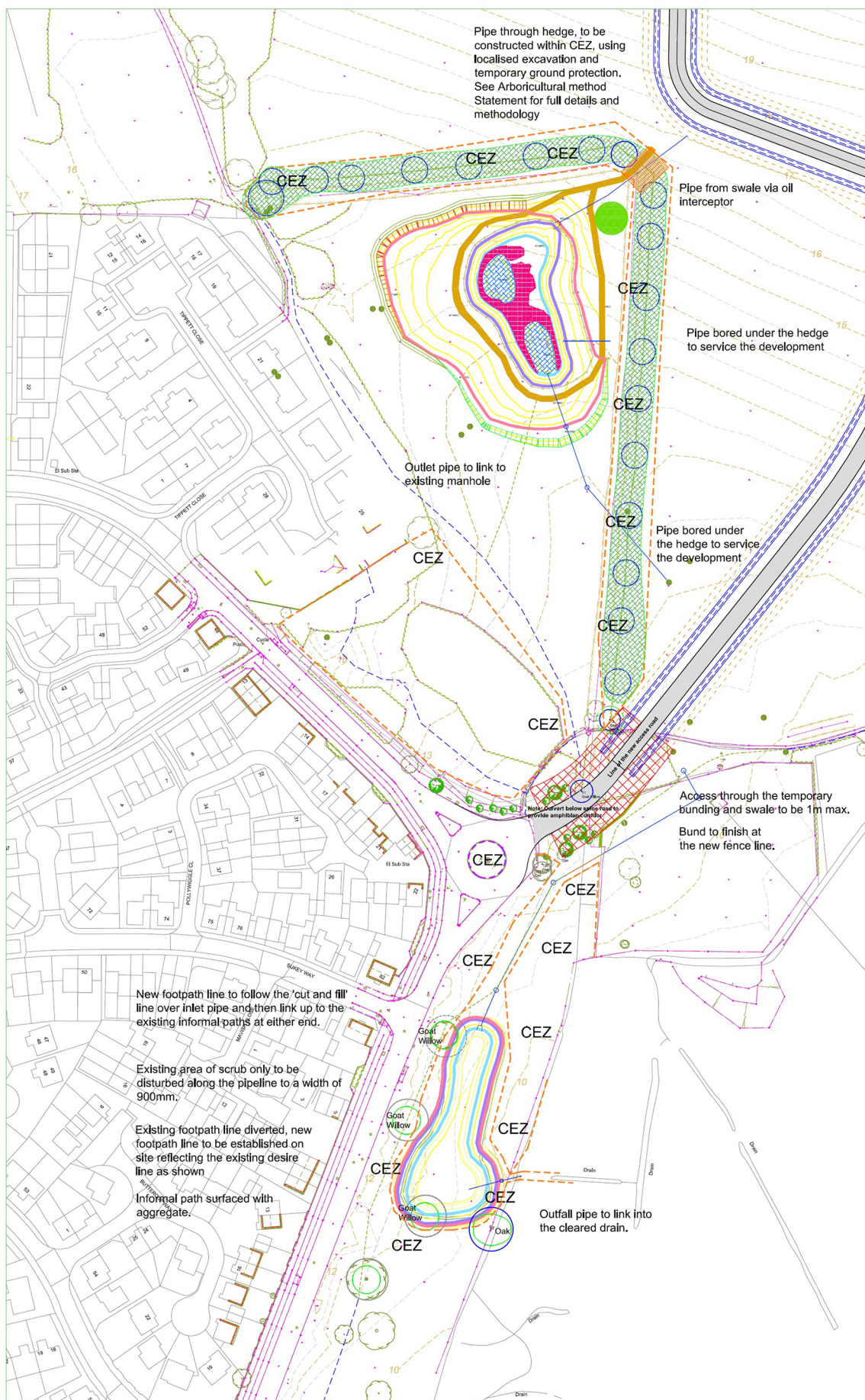
Title
Bowthorpe Three Score

Landscape Works
Lagoon Masterplan

Scale(s) 1:1000

Date	July 2012	DWG. No.	
Designed by	JN	MMD-301739-LS-PLA-444 B	
Drawn By	JN & EH	NEG. No.	
Checked By	CEZ area extended		

Jerry Massey
Director of development and regeneration
City Hall, Norwich, NR2 1NH
tel 0344 980 3333 fax 01603 213548
highways@norwich.gov.uk



Proposed Site Layout

Plan showing protected areas, lagoon locations, associated new footpath locations

Scale 1:1000