

## **Mousehold Heath Conservators**

Date: **Friday, 15 March 2019**  
Time: **14:00**  
Venue: **Mancroft room City Hall, St Peters Street, Norwich, NR2 1NH**

### **Committee members:**

Councillor Maxwell (chair)  
Councillor Price (vice chair)  
Councillor Bradford  
Councillor Brociek-Coulton  
Councillor Button  
Councillor Kendrick  
Councillor Lubbock  
Councillor Peek  
Councillor Sands (M)  
Clare Cohen, Mousehold Heath Defenders  
Matthew Davies, Norwich Fringe Project  
John Trevelyan, The Norwich Society

### **For further information please contact:**

Committee officer: Alex Hand  
t: (01603) 212459  
e: [alexhand@norwich.gov.uk](mailto:alexhand@norwich.gov.uk)

Democratic services  
City Hall  
Norwich  
NR2 1NH

[www.norwich.gov.uk](http://www.norwich.gov.uk)

### **Information for members of the public**

Members of the public and the media have the right to attend meetings of full council, the cabinet and committees except where confidential information or exempt information is likely to be disclosed, and the meeting is therefore held in private.

For information about attending or speaking at meetings, please contact the committee officer above or refer to the council's website.



If you would like this agenda in an alternative format, such as a larger or smaller font, audio or Braille, or in a different language, please contact the committee officer above.

## Agenda

### Page nos

#### 1 Public questions/petitions

To receive questions / petitions from the public.

Please note that all questions must be received by the committee officer detailed on the front of the agenda by **10am on Tuesday 12 March 2019.**

Petitions must be received by the committee officer detailed on the front of the agenda by **10am on Thursday 14 March 2019.**

For guidance on submitting public questions or petitions please see appendix 1 of the council's constitution.

#### 2 Apologies

To receive apologies for absence.

#### 3 Declarations of interest

(Please note that it is the responsibility of individual members to declare an interest prior to the item if they arrive late for the meeting).

#### 4 Minutes

5 - 8

To agree the accuracy of the minutes of the meeting held on 18 January 2019.

#### 5 Mousehold Heath Q3 2018-19 budget monitoring report

9 - 12

**Purpose** - To provide the budget monitoring position for the revenue budget 2018/19 and capital position 2018/19 as at 31 December 2018.

#### 6 Mousehold Heath Conservators decision made under delegated powers for additional contractor days

13 - 14

**Purpose** - To report to the conservators a decision made under delegated powers for two additional contractor days

#### 7 Mousehold Heath quarterly management update

15 - 20

**Purpose** - To provide a quarterly update on activities on and

relating to Mousehold Heath which contribute to the delivery of the management plan objectives.

<b>8</b>	<b>Mousehold Heath management plan 2019 -2028</b>	<b>21 - 106</b>
	<b>Purpose</b> - To approve the Mousehold Heath management plan 2019–2028.	

Date of publication: **Wednesday, 06 March 2019**





**Mousehold Heath Conservators****14:00 to 15:05****18 January 2019**

**Present:** Councillor Maxwell (chair), Price (vice chair), Bradford, Brociek-Coulton, Button, Kendrick, Lubbock and Sands (M); and Clare Cohen (Mousehold Heath Defenders), John Trevelyan (The Norwich Society) and Matthew Davies (Norwich Fringe Project).

**Apologies:** Councillor Peek

**1. Public Questions/Petitions**

There were no public questions or petitions.

**2. Declarations of interest**

There were no declarations of interest.

**3. Minutes**

**RESOLVED** to approve the accuracy of the minutes of the meeting held on 21 September 2018.

**4. Budget and precept 2019/20**

The finance business partner (LGSS) presented the report. The budget showed that 4% of proposed reserves had been accrued to date. The 2019/20 budget proposed an increase of £9,726 compared to the previous year to fund an increase in payments for salaries, pensions, repairs and maintenance. The vice chair said that a modest increase in the precept was being recommended to cover these increases.

**RESOLVED** to:

- (1) approve the budget as proposed in appendix one to the report; and
- (2) place a precept on Norwich City Council of £235,010 for the financial year 2019/20.

**5. Decision made under delegated powers regarding urgent repairs at the pavilion**

The parks and open spaces manager presented the report.

The chair said that emergency repairs had been required on the roof of the pavilion and authority for the work to be completed was made under delegated powers by the director of neighbourhoods in consultation with the chair and vice chair of Mousehold

Heath Conservators. The vice chair said meetings would be held with the tenants to focus on the long term management of the building which fitted into the strategic approach taken in the 10 year management plan.

The parks and open spaces manager said repairs on the pavilion windows were required but were outstanding as it was not clear who was responsible to pay for these.

**RESOLVED** to note the decision made under delegated powers regarding urgent repairs at the pavilion.

## **6. Ten year work programme and annual work plan 2019/20**

The parks and open spaces manager presented the report. The works at the pavilion had accelerated the need to bring forward the decisions in relation to public toilet provision at the heath. This impacted on what happened with the football pitch, changing rooms and connected toilet block. Appendix A to the report showed the revisions for the years which the works were to be scheduled in and approval was being sought to amend the 10 year plan.

The annual work plan factored estimated costs; costs were not shown for elements which were part of the core service such as staffing as these costs did not change. No costs regarding works at the pavilion had been finalised as a conditions survey review was being awaited. Some costs maybe able to be taken from the capital budget. The roof was expected to be a considerable cost. It was planned that there would be a reserve balance of £14,990 by the end of 2019/20.

The work programme was presented in a different format and the parks and open spaces manager asked if members found the new format helpful. The vice chair and chair found the detail very helpful. It was noted by a member that the format could be difficult to comprehend as it was a large document going over a number of pages. It was suggested that if only columns for active months were shown it would reduce the size of the document. A member asked if electric testing should be added to the section on bandstand maintenance.

**RESOLVED** to approve:

- (1) the revised ten year work programme; and
- (2) the annual work plan, subject to any future changes which may need to be made to the annual work plan being presented for approval at a later date.

## **7. Mousehold Heath management plan 2018-2028 progress**

The parks and open spaces manager presented the report. The management plan was too detailed a document to be produced and distributed; it was a working document and would be available online as part of the public consultation on the plan. A summary document which linked to the larger management plan would be produced for the public with easily referenced visual information.

The public document would include three maps:

- (1) Facilities: assets and fixed infrastructure such as pedal ways, pavilion and bandstand.
- (2) Habitat: heathland now and in the future
- (3) Cultural features: tramway, beech drive, cavalry track

The management sub group would meet on Monday 21 January to review the documents for consultation, and the consultation process. Consultation would take place in February.

The management plan would return to Mousehold Heath Conservators committee in March for approval.

A member asked if summary detail about the cultural features could be included in the text boxes and the open spaces manager said that he would do this.

A member asked if the summary document could be produced as an 'easy read' document and the parks and open spaces manager agreed to speak to the communications team regarding this.

**RESOLVED** to:

- (1) note the progress to date;
- (2) ask the parks and open spaces manager to consider if it is possible to produce the public summary management plan:
  - a) as an 'easy read' document; and
  - b) to include summary text about the cultural features.

## **8. Mousehold Heath quarterly management update**

The parks and open spaces manager presented the report. The chair commended the wardens on their management of the fires on the heath experienced in the summer of 2018 and highlighted the total number of hours volunteered on the heath.

**RESOLVED** to note the Mousehold Heath quarterly management update.

CHAIR



**Report to** Mousehold Heath Conservators  
15 March 2019  
**Report of** Chief finance officer (Section 151 Officer)  
**Subject** Budget monitoring statement April – December 2018

---

**Item**

**5**

**Purpose**

To provide the budget monitoring position for the revenue budget 2018/19 and capital position 2018/19 as at 31 December 2018.

**Recommendation**

To note the current budget monitoring position and capital position.

**Corporate and service priorities**

The report helps to meet the corporate priority value for money services.

**Financial implications**

The report states the budgetary position for Mousehold Heath Conservators, the financial implications are discussed within the report.

**Ward/s:** Crome

**Cabinet member:** Councillor Kendrick - Resources

**Contact officers**

Vicki Reynolds (Service accountant)

01603 212493

**Background documents**

None

## Report

1. Conservators approved a precept for the financial year 2018/19 of £225,284 at their meeting of 19 January 2018.
2. The Conservators have requested that budget reports be brought to their meetings on a regular basis. Appendix A details the financial position for Mousehold Heath as at the end of December 2018/19, and comparison of the expected outturn to the annual budget. Explanations for variances are given in paragraph 3 below.
3. The letters preceding the explanation below cross reference with the corresponding letter shown in Appendix A.
  - a) The actual corporate pension deficit charge is lower than the expected charge, as is employee insurance.
  - b) Depreciation is budgeted for but does not impact on balances, since it is reversed out of the revenue accounts.
  - c) Support services costs and other recharges will be processed later in the year. The forecast outturn reflects an expectation that in the majority of cases recharges will match budgets.

The wardens are managing an overall underspend in order to partially offset the cost of the pension deficit payment paid back at the end of each year until 2021/22.

4. Overall the budget shows a forecast underspend of £2,704. Budgets move during the course of the year reflecting virements and changes in anticipated overheads and some budget items (e.g. depreciation) do not impact on the conservators' balances, therefore this figure does not compare directly with the precept figure.
5. The impact of the precept and forecast 2018/19 budget monitoring position (adjusted for the impact of the budget and accounting adjustments described above) on the Mousehold Heath balances are as follows:

Balance brought forward from 2017/18	-£7,960
Precept 2018/19	-£225,284
Forecast Outturn 2018/19	£225,012
Accounting adjustment for depreciation	-£1,719
7th instalment of pension deficit costs	£2,808
Forecast balance to be carried forward to 2019/20	-£7,143
In-year movement in reserves	£817

## Capital

6. The position on capital is as below, with no spend incurred in 2018/19 to date. There are no current items in the capital budget, therefore no spend can be incurred in 2018/19 without a budget amendment to Council.

Item	£
Rangers House balance b/f	- £100,766
Balance of receipts	- £100,766

Budget Monitoring				Year: 2018/19				Period: 9 (Dec)			
421020 Household Heath Conservators				Citywide Services							
Approved	Current			Budget To	Actual To Date	Variance To	Forecast	Forecast			
Budget	Budget			Date		Date	Outturn	Variance			
		EXPENDITURE									
		Employees									
70,257	70,257	1405 Salaries Full Time		52,695	53,269	574	70,257	0			
9,239	9,239	1406 Salaries Employer PF Contrib'ns		6,930	7,009	79	9,239	0			
4,614	4,614	1935 Pension Added Years share		3,465	3,507	42	4,614	0			
13,321	13,321	1939 Pension Deficit Recovery share		13,321	12,939	-382	12,939	-382	A		
568	568	1990 Employee/Liability Insurance		568	514	-54	514	-54	A		
97,999	97,999	Subtotal Employees		76,979	77,239	260	97,563	-436			
		Premises									
0	0	2090 Day to Day Repairs (ex R100)		0	3,631	3,631	0	0			
9,000	9,000	2100 General Repairs & Maintenance		6,750	0	-6,750	7,750	-1,250			
0	0	2303 Energy Performance Certificates		0	0	0	0	0			
250	250	2600 Grounds General Mtce & Upkeep		189	250	0	250	0			
74,510	74,510	2651 Grounds Maintenance contract		55,881	55,883	2	74,510	0			
4,380	4,380	2655 Treeworks		3,285	3,285	0	4,380	0			
1,240	1,240	2810 Electricity		927	910	0	1,240	0			
76	76	2851 Water Charges Metered		54	0	0	76	0			
7,297	7,297	2875 Contract Cleaning		5,472	5,473	1	7,297	0			
25	25	2900 Fire Insurance Buildings/Conts		25	27	2	27	2			
96,778	96,778	Subtotal Premises		72,583	69,459	-3,114	95,530	-1,248			
		Transport									
800	800	3080 Car and Cycle Allowances		603	382	-221	500	-300			
800	800	Subtotal Transport		603	382	-221	500	-300			
		Supplies & Services									
445	445	3259 Specialist Supplies		333	145	-188	445	0			
450	450	3370 Equipment - Purchase		342	450	108	450	0			
650	650	3371 Equipment - Repairs/Maintenance		486	624	138	650	0			
550	550	3389 Other Equipment and Tools		414	490	76	550	0			
500	500	3550 Clothing and Uniforms General		378	408	30	500	0			
745	745	3804 Refreshments		558	202	-356	860	115			
500	500	3815 Staff Conference & Course Fees		378	300	-78	370	-130			
6,000	6,000	3871 Projects		4,500	1,683	-2,817	6,000	0			
7,110	7,110	4102 Other Contractual Services		5,337	6,390	1,053	7,350	240			
16,950	16,950	Subtotal Supplies & Services		12,726	10,692	-2,034	17,175	225			
		Capital Financing									
1,719	1,719	5701 Depreciation		0	0	0	1,719	0	B		
1,719	1,719	Subtotal Capital Financing		0	0	0	1,719	0			
214,246	214,246	Subtotal EXPENDITURE		162,891	157,772	-5,109	212,487	-1,759			
		INCOME									
		Receipts									
-1,404	-1,404	8123 Football		-1,053	0	1,053	-2,050	-646			
0	0	8601 Sponsorship - External Organisation		0	-237	-237	-237	-237			
-15,000	-15,000	9039 Other Rents		-11,250	-11,250	0	-15,000	0			
-1,800	-1,800	9132 Catering Concessn Pitch & Putt		-1,350	-1,350	0	-1,800	0			
-18,204	-18,204	Subtotal Receipts		-13,653	-12,837	816	-19,087	-883			
		Government Grants									
-2,204	-2,204	7097 Government Grants: Specific		-1,656	-551	1,105	-2,750	-546			
-2,204	-2,204	Subtotal Government Grants		-1,656	-551	1,105	-2,750	-546			
-20,408	-20,408	Subtotal INCOME		-15,309	-13,388	1,921	-21,837	-1,429			
		INDIRECT									
		Centrally Managed									
0	641	P100 Programmed Maint (ES/Prop Grp)		641	641	0	641	0			
0	72	R100 Day to Day Reps (ES/Prop Grp)		72	72	0	72	0			
0	713	Subtotal Centrally Managed		713	713	0	713	0			
		Recharge Expenditure									
6,272	6,272	4040 CDS IT Services Recharge		0	0	0	6,272	0			
640	640	5021 CDS Legal Services Recharge		0	0	0	640	0			
4,600	4,600	5022 CDS HR Services Recharge		0	0	0	4,600	0			
667	667	5024 Property Services Recharge		504	1,151	647	1,151	484			
6,337	6,337	5026 CDS Finance Services Recharge		0	0	0	6,337	0			
7,133	7,133	5044 CDS Management Support		0	0	0	7,133	0			
2,429	2,429	5047 CDS Comms + Research Recharge		0	0	0	2,429	0			
5,087	5,087	5097 Recharge from AHOs/One Stop Shops		3,816	0	-3,816	5,087	0			
33,165	33,165	Subtotal Recharge Expenditure		4,320	1,151	-3,169	33,649	484	C		
33,165	33,878	Subtotal INDIRECT		5,033	1,864	-3,169	34,362	484			
227,003	227,716	Total Household Heath Conservators		152,615	146,248	-6,357	225,012	-2,704			



<b>Report to</b>	Mousehold Heath Conservators	<b>Item</b>
	15 March 2019	
<b>Report of</b>	Head of citywide services	<b>6</b>
<b>Subject</b>	Mousehold Heath Conservators decision made under delegated powers for additional contractor days	

---

### **Purpose**

To report to the conservators a decision made under delegated powers for two additional contractor days.

### **Recommendation**

To note the content of the report.

### **Corporate and service priorities**

The report helps to meet the corporate priority of a clean and safe city

### **Financial implications**

The additional costs of £500 are not in the budget and work programme approved for 2018-19. The additional spend will be made from the 2018-19 budget and covered by a Rural Payment Agency grant which is due to be received in March-April 2019.

**Ward/s:** Catton Grove, Crome and Sewell Wards

### **Contact officers**

Simon Meek - parks and open spaces manager 01603 212403

Bob Cronk – director of neighbourhoods 01603 212373

### **Background documents**

None

## Background

1. At a meeting of Mousehold Conservators 22 January 2016, Item 7 Report: Mousehold Heath Conservators Management sub-group terms of reference, available [here](#), a recommendation was approved for the head of local neighbourhood services, in consultation with both the chair and vice-chair of the conservators, to make changes to all future work programmes if the need arose between conservators meetings first taking the decision to the management sub-group (unless an urgent decision is required).

## Report

2. The stripping of the humus layer in the heathland reclamation areas is an annual task, which involves the removal of the organic material which forms in the top layer of the soil when plants and animals decay.
3. The layer needs to be stripped and removed to produce poor quality acidic soil which heathland plants require to become established.
4. On 19 February the Terrestrial biodiversity adviser from Natural England, who oversees the Higher Level Stewardship agreement visited the heath.
5. In the content of an email received following the visit, the adviser said that he was 'really impressed' with how the work is going and particularly pleased to hear how successful the turf scraping has been and to see the heather recovery.
6. The possibility of scraping more of the burnt areas to remove the organic residue prior to vegetation growing through it in the spring was discussed as this would be beneficial to the regeneration of the heath.
7. The removal of the organic layer has always been viewed as a positive step by the fire brigade, in terms of minimising the risk of the spread of fire through the underlying humus layer.
8. The contractor came on site on 25 and 26 February 2019 to carry out this year's stripping of the organic layer. It became evident through discussions with the contractor that he could remain on site for an additional two days but he needed confirmation by the end of his first day.
9. The cost of the work will be covered by a reduction in the volume of humus stripping work agreed in the 2019/20 annual work programme, unless other in-project savings can be found.
10. It was viewed as a priority to take up the opportunity of the contractor being able to remain two more days and to scrape the recently burnt areas before they regenerated, than completing four days in 2019/20 at this point in time.
11. Due to insufficient time available to take the decision to the management sub-group, verbal approval was obtained on 25 February from the chair and vice-chair and the director of neighbourhoods to approve £500 to cover two days work. It was confirmed in writing by the director of neighbourhoods on 26 February.

<b>Report to</b>	Mousehold Heath Conservators	<b>Item</b>  <b>7</b>
	15 March 2019	
<b>Report of</b>	Head of citywide services	
<b>Subject</b>	Mousehold Heath quarterly management update	

---

### **Purpose**

To provide a quarterly update on activities on and relating to Mousehold Heath which contribute to the delivery of the management plan objectives.

### **Recommendation**

To note the content of the report.

### **Corporate and service priorities**

The report helps to meet the corporate priority a safe, clean and low carbon city.

### **Financial implications**

Any financial implications arising from this report will have or will be met from approved budgetary provision.

**Ward/s:** Catton Grove, Crome and Sewell Wards

### **Contact officer**

Simon Meek, parks and open spaces manager	01603 212403
Will Stewart, Mousehold Heath warden	01603 213310
Nigel Hales, Mousehold Heath warden	01603 213310

### **Background documents**

None

# **Report**

## **Background**

1. The report details the work, activities and issues arising on, and relating to, Mousehold Heath.

## **Management**

2. Work was completed on the draft full management plan and also the draft public summary plan. The documents went out for two weeks consultation via the council's website.
3. 35 people responded to the consultation, no details were recorded to avoid General Data Protection Regulations, it is known that Norfolk Wildlife Trust and Norfolk County Council Historic Environment Service did respond.
4. Following the consultation which was largely supportive, minor amends were made and the final draft produced for approval at the next Mousehold Conservators meeting.

## **Infrastructure management**

5. A new bench, sponsored by the Mousehold Heath Defenders, was installed in Oak Avenue, by a Mousehold warden and a volunteer from the Defenders.
6. A bench on St James Hill has been repaired by the wardens.
7. Britannia Road and the Pitch and Putt public car parks had regrading works carried out to repair damage caused through erosion and to repair pot holes.

## **Tree safety**

8. Through observations made during patrols and following ad hoc reports from members of the community, the wardens have undertaken a range of tree work across the site, to unblock paths and make 9 mainly wind-blown trees and branches safe. There are still low risk trees which require further remedial work. These works will be prioritised and completed so as not to disturb hibernating insects and nesting birds.

## **Management for nature**

9. A range of habitat and site management tasks have been carried out by the wardens, volunteers and contractors, to help deliver the management plan objectives relating to habitats. These are detailed in relevant sections in the report.

## **Woodland management**

10. Work to restore a section of woodland adjacent to Gilman Road by clearing dead and overgrown vegetation has continued. This work has been carried out to increase

community access to a formally impenetrable area, with the aim of improving biodiversity and creating a more diverse environment for fauna and flora to become established.

11. Encroaching bracken and scrub has been cut back in other woodland glades to allow a diversity of plants to grow and flower.

### **Heathland and Grassland management**

12. The autumn/winter months are one of the busiest times on the heath, with practical tasks focusing on path maintenance and cutting back encroaching vegetation; and clearing scrub, which rapidly out-competes and smothers important heathland and grassland plant species.
13. Large areas of old and leggy gorse that had encroached over footpaths, (especially adjacent to the Vinegar Pond) and also onto heather covered areas, has been cut back and fire breaks created. This work will help to improve the biodiversity of the site and also reduce the risk of large fires.
14. Encroaching scrub has also been cut back and removed to conserve heathland and grassland habitats.
15. Large, previously burnt areas (almost one hectare) have been humus stripped, to create bare ground to assist with the regeneration of heather in these areas, fulfilling the requirements set out in the Higher Level Stewardship (HLS) Agreement. This work will also help reduce fire size and risk.
16. The acid grassland at the Anthills area has been cut with a brushcutter and the arisings removed, to reduce nutrient status and benefit specialist acid grassland plants.
17. A volunteer has undertaken a Tree popper trial, using the tool to pull invasive birch saplings. Sapling regrowth will be counted over the next few months to see how effective the tool has been, to inform a decision on future use.
18. A Natural England Officer undertook a site visit with the Mousehold wardens, to monitor the progress of the Mousehold Heath HLS Agreement 2012 – 2022. He was pleased with the progress of the project to date, especially the success of the humus stripping, and suggested that the heath could be eligible for another similar Environmental Stewardship agreement in 2022.

### **Path maintenance.**

19. Gilman Road cycle route/footpath was flailed to open up access and control overhanging vegetation.
20. Eight footpaths which have been encroached upon by vegetation, such as those behind the Vinegar Pond, have been cut back by the Mousehold wardens, with the help of individual volunteers and volunteer groups, to maintain access to the site.

21. Work has also continued on maintaining the Cavalry Track by cutting back encroaching vegetation and clearing debris from the adjacent gullies.

### **Litter management**

22. A number of areas formerly used for camping have been cleared and rubbish removed by the wardens. Assistance was provided by the Norwich Norse Environmental litter picker, as part of his daily work.

### **Misuse and antisocial behaviour**

23. Five separate campers have been found on the heath. The wardens verbally advised them about camping on the heath being against the bylaws and they were advised to leave. If they claimed to be homeless, the Norwich City Council single homeless and rough sleeper coordinator was contacted so that she could make contact with the persons.

24. A number of groups and individual mountain bike cyclists building BMX jumps have been spoken to by the Mousehold wardens seen during patrols and whilst working on the heath.

25. In all but one incident the individuals listened to the advice, acknowledged what they were asked to do and left. On one occasion two people refused to acknowledge that they understood what they were being asked to do and the reasons why, and then rode off.

26. If people did remain and continue the activity the police would be contacted and asked to speak to the participants and deal with the incident.

27. A number of BMX jumps have been taken down and the hollows filled in by the Mousehold wardens with help from a Norwich City College Duke of Edinburgh student group.

### **Volunteers**

28. A total of 738 volunteer work hours have been undertaken on site in the last quarter by the following groups:

- The Conservation Volunteers (TCV)
- The Assist Trust
- Mousehold Heath Defenders
- Mousehold Heath Mousketeers
- City College Duke of Edinburgh Award (DofE) Scheme group
- East Coast College group
- George White School students
- Norwich High School for Girls
- Many volunteers from the community

29. Ongoing support provided by the volunteer groups has provided an opportunity for the community to become involved with the management of the heath, to increase their understanding of the projects being undertaken, the importance of the heath and to engender a sense of ownership and pride in the space.

## **Events**

30. A range of events to increase understanding, involvement and enjoyment of the site have been organised or hosted on the heath in the last quarter:

- A bird identification and ecology walk took place in December, and 18 species of bird were seen. 8 people attended the walk.
- Forest schools run one session a week (depending on the weather) with approximately 15-20 pupils on each one.
- The Mousehold wardens have led 6 guided walks for East Coast College students with seven students attending each walk.
- Norwich School cross country running event starting and finishing at Gilman Road Open Space.





<b>Report to</b>	Mousehold Heath Conservators 15 March 2019	<b>Item</b>
<b>Report of</b>	Head of citywide services	<b>8</b>
<b>Subject</b>	Mousehold Heath management plan 2019-2028	

### **Purpose**

To approve the Mousehold Heath management plan 2019–2028.

### **Recommendations**

To:

- 1) note the progress to date;
- 2) review the consultation feedback;
- 3) note the amendments made in response to the feedback;
- 4) approve the Mousehold Heath management full plan 2019-2028; and
- 5) approve the Mousehold Heath management plan 2019-2028 public summary plan.

### **Corporate and service priorities**

The report helps to meet the corporate priority a safe, clean and low carbon city.

### **Financial implications**

Any financial implications arising from this report will have or will be met from approved budgetary provision.

**Ward/s:** Catton Grove, Crome and Sewell Wards

### **Contact officers**

Simon Meek – parks and open spaces manager                      01603 212403

### **Background documents**

None

# Report

## Background

1. The format and content of sections one and two of the plan (which include objectives, project specifications and a ten year annual work programme) have been approved on a stage by stage basis at Conservators meeting on 16 June 2017, 19 January 2018, 16 March 2018 and 15 June 2018.
2. At the Conservators meeting on 21 September 2018 the committee resolved to:
  - i) note the management prescriptions still outstanding;
  - ii) approve the management prescriptions submitted subject to any amendments received from the Conservators being incorporated;
  - iii) delegate the approval of the incomplete management prescriptions and first draft plan to the management subgroup; and
  - iv) delegate development of the consultation content to the management subgroup.
3. An amendment to the public summary plan was requested to include summary text about the cultural features. There was also a request for the production of an 'easy read' document.

## Progress to date

4. The outstanding management prescriptions, the draft full plan and public summary plan were brought to the management subgroup meeting on 21 January 2019 for approval prior, to being made available for consultation.
5. The subgroup discussed consultees and the Parks and open spaces manager requested that members sent their thoughts to him. A list of the consultees with a known interest in the site who were emailed the consultation is contained in Appendix 1.
6. There was insufficient time to look into and produce an 'easy read' copy on this occasion. It is a matter that will be looked into with regards to future documents, suitability and costs.
7. A proposed format for the online survey was brought to the meeting, and the content and a two week consultation process approved.
8. The draft full management plan and summary document went on line on 24 January 2019 and consultation started on 25 January 2019 and ended on 13 February 2019.
9. In total 35 people responded to the consultation, and the response was largely positive. The comments received and the response to them is contained in Appendix 2. The Natural England adviser did not respond through the survey but arranged a site visit with the wardens.

10. Minor changes have been made within the general content of full plan, along with some minor amends to project specifications and three new project specifications. The public summary plan only required a minor amendment in the general text.
11. The full Mousehold Heath management plan 2019 – 2028 text is in Appendix 3.
12. The 10 year work programme is in Appendix 4 and the project register containing the project specifications is available online [here](#).
13. The public summary Mousehold Heath management plan 2019 - 2028 is contained in Appendix 5.

## **Next steps**

14. Following approval the full Mousehold Heath management plan will be produced in pdf format and placed on the Mousehold Heath page of the website. The public summary plan will also be put into pdf format and a small number of hard copies produced for members, the local library and local schools.
15. The management plan structure will link with all future quarterly management updates, annual reports and annual work programmes.

**Mousehold Heath management plan 2019 -2028: Organisations contacted**

1. Blue Sky Leisure
2. Café Britannia
3. Charles Darwin Primary and Nursery School
4. The Conservation Volunteers (TCV),
5. East Coast College
6. Easton and Otley College
7. George White Junior School
8. Heartsease Open Academy
9. Historic Environment Service, Environment and Planning, Community and Environmental
10. Lion Wood Primary School
11. Magdalen Gates Primary School
12. Mousehold Heath Defenders
13. Mousehold Heath Mousketeers
14. Mousehold Infant & Nursery School
15. Norfolk Wildlife Trust
16. Natural England
17. Norwich Access Forum
18. Norwich Assist Trust
19. Norwich and Central Norfolk MIND
20. Norwich High School For Girls
21. Norwich Society
22. Norfolk bat group
23. Norfolk Butterfly County Recorder
24. Norfolk Dragonfly and Damselfly County Recorder
25. Norfolk fire and rescue
26. Norfolk Fungi County Recorder
27. Norfolk Moths County Recorder
28. Norfolk police
29. Norfolk Ramblers
30. Norfolk Solitary Bees and Wasps County Recorder
31. NCC Events
32. Norwich City College
33. Sprowston High School

## Mousehold Heath management plan 2019 -2028: Consultation summary

35 people responded to the consultation, including Norfolk Wildlife Trust and Norfolk County Council Historic Environment team.

### 1. Don't agree with vision?

Vison Comment	Response to comment
The Mousehold Conservators have allowed areas of the heath to become is bike track so clearly they are not committed to safeguarding it for the long term future	The wardens take action to deter these activities. This management plan and what has been delivered over the 10 years previously clearly shows that the conservators are committed, to not only safeguarding, but also improving the heath.
Please correct North to South Walsham, (the place the heath once extended to)	Will be corrected in the plan

### 2. Don't agree with 8 objectives?

Objectives Comment	Response to comment
G) Should be local people not 'communities'.	Objective was agreed with conservators so will remain

### 3. Facilities

Facilities Comment	Response to comment
The Male/Female & Disabled toilet facilities near Zaks restaurant require immediate attention. A clear time line with clear achievable objectives must be delivered. This was on the last Management Plan but nothing was completed.	No change to plan to be considered. Covered within projects in 10 year plan
Decent car park surfacing required as regularly develop potholes. Access paths from the Gurney Road car park need repairing and maintaining as inches deep in mud.	No change to plan to be considered. Covered within projects in 10 year plan
Football pitch not being used as much as it should. Put the area to better use. eg children's playground	No change to plan to be considered. Covered within projects in 10 year plan
Agree	No change to be considered.

<b>Facilities Comment</b>	<b>Response to comment</b>
These proposals clearly identify and cover the main issues relating to facility provision.	No change to plan to be considered. Covered within projects in 10 year plan
yes i agree with this	No change to be considered.
Yes it's a great idea to have the improvements made as long as they actually happen and the money not just cut at the last minute so they can't finish all of what has been proposed	No change to plan to be considered. Covered within projects in 10 year plan
The toilet needs to be more accessible and clearly marked and the carpark also needs to be looked at as they are some nice big pot holes and at the band stand area there isn't many seating areas	No change to plan to be considered. Covered within projects in 10 year plan
fine	No change to be considered.
Get the pooping dogs off Gilman open space	No change to be considered. The heath is for all users so the exclusion of dogs from this area would not be considered. There are mechanisms in place to deal with an owner not clearing up after their dog if it is witnessed and also to report problematic areas if sufficient detail is provided to identify the specific area at a location via the council's website.
I think something needs to be done about the parking around the Britannia Cafe. I know it is a popular venue but how the users park has made this area a dangerous place for both pedestrian and vehicle users.	No change to plan to be considered. Covered within projects in 10 year plan
Appears that sensible decisions are being made to sure that Mousehold retains its popularity.	No change to be considered.
People use the football pitch all the time. It should stay.	No change to plan to be considered. Covered within projects in 10 year plan
Mostly good, but you may have issues with loos Could you maybe provide eco toilets of some kind	No change to plan to be considered. Covered within projects in 10 year plan
All good proposals.	No change to be considered.
Changing room should be available for anyone and the toilet block should be maintained.	No change to plan to be considered. Covered within projects in 10 year plan
Broadly supportive	No change to be considered.

Facilities Comment	Response to comment
<p>Agree with the majority of points, however with the creation of the 5g pitches at the local high school, use of a sports pitch may be minimal. I would have no issue with this being repurposed, however consideration would need to be made in potentially attracting more people to what can be an already very busy site and road, and that any new proposals didn't have a negative impact on the vegetation, habitat and wildlife that already exists. Additionally, the toilet block definitely needs some tlc, building a new block may be more effective than trying to maintain the current block.</p>	<p>No change to plan to be considered. Covered within projects in 10 year plan</p>
<p>Need more easy access paths</p>	<p>Update Full plan Update project ME41/01 Restrictions on all routes which may reduce accessibility are kept to a minimum, only installing them where necessary to control illegal or undesirable activities which have a detrimental impact on the heath or other users. Main paths in general are accessible to scooters and wheel chair from the public car parks, especially in the summer months.</p> <p>As a natural area but in an urban setting there is a balance to be struck. To install special access routes throughout the heath, if desirable, it would need a large investment for specific surfacing to be installed and also an increase in maintenance costs.</p> <p>As well as the surfaced route in project ME41/04 referred to as the access for all path, the cycleway in project ME41/03 is also hard surfaced and for use for non-cycle users also.</p>

<b>Facilities Comment</b>	<b>Response to comment</b>
Great proposals, fully agree the toilets need upgrading and maintenance. I would use the Heath more during lunch breaks if I was able to park my car in the Zaks car park, however it is usually full with Norse lorry's, with men glaring from them who have parked in the most inconsiderate way possible and refuse to move when people try to leave the car parks.	This observation will be raised with Norse.

#### 4. Cultural

<b>Cultural Comment</b>	<b>Response to comment</b>
We support	No change to be considered
The Pavilion Locally listed, the Pavilion was built as a team room in approximately 1901. A programme of works to maintain the exterior of the Pavilion will be delivered. What is the programme of works? Clearly define what works will be carried out to preserve and improve this building. Again make them achievable and make sure the work is completed.	Project specification MC50/01 to be updated following the approval of a works schedule (based on the condition survey) at a future conservators meeting
I am happy with the proposals.	No change to be considered
Excellent	No change to be considered
all good ideas	No change to be considered
Agree	No change to be considered
Its great to see that the cultural features have been identified as in need of active management and will be actively managed and looked after into the future.	No change to be considered
yes to this	No change to be considered
Again as long as it actually happens and not just a bodged job when the workers feel like it fine	No change to be considered
I agree with all these proposals	No change to be considered
All sounds very exciting. Sensible plans to retain our heritage and ensure it does not get lost into the mists of time.	No change to be considered
Agreed	No change to be considered
All fine	No change to be considered
If there are funds.	No change to be considered
Supportive	No change to be considered
Agree with the above.	No change to be considered



Cultural Comment	Response to comment
<p>The events and guided walks are a must for getting people involved in the Heath, they are fantastic and well run, however they need to be better advertised and on days that are accessible to everyone, not just those who do not work, more Saturday and Sundays please.</p>	<p>Update project MI60/01 Events Update project MI60/02 Guided walks There are mixture of events; weekday and weekend. Moth trapping did not have any weekend sessions last year but one will be arranged for a weekend this year. A number of events are organised during school holidays.</p>
<p>Our first comment is that we were surprised that the western most area of the open space commonly thought of as Mousehold Heath including the Pitch and Putt course, most of the area south of Valley Drive, the playing fields adjacent Heartsease Lane, the Britannia Road sports ground is not included in the management plan area. Page 11, paragraph 9 seems to indicate that the Pitch and Putt course is on the part of Mousehold Heath covered by the management plan. Similarly the 'rifle butts..... survive south of Valley Drive' mentioned on page 16 paragraph 3 aren't within red area defined on Maps 1 and 3. Whilst we recognise that the first part of Cultural Heritage Section is a general archaeological and historical background perhaps more clarity is needed about which site and monuments mentioned are within the management plan area and which are not.</p>	<p>Update Full Plan. Delete areas referred to off the 'heath' from the plan to avoid confusion.</p>
<p>Legal constraints - The site of William's Chapel is a designated heritage asset (Scheduled Ancient Monument), therefore the Ancient Monuments and Archaeological Areas Act 1979 is a legal constraint on the management of the William's Chapel site. Similarly the two aircraft crash sites are covered by the Protection of Military Remains Act 1986.</p>	<p>Update Full Plan. Update legal constraints section to include missing items.</p>

Cultural Comment	Response to comment
<p>Archaeological and historical significance section is good on the general history but lacks detailed specific information on some archaeological sites, monuments and landscape features. Although there may not have been many changes or updates to Norfolk Historic Environment Record we recommend contacting our colleagues at <a href="mailto:heritage@norfolk.gov.uk">heritage@norfolk.gov.uk</a> to obtain up to date HER data.</p>	<p>Update project ML40/04 Contact will be made during the first year of the plan to see if information has been updated.</p>
<p>The lack of specific information means there is not a clear link between past land uses, giving rise to archaeological monuments and landscapes and how they may be impacted by the management plan. For example the plan recognise the importance of quarrying and extractive activities of various sorts and dates, but doesn't mention the protection of archaeological earthworks related to quarrying until Appendix 1 item MC70.</p>	<p>Objective F refers to management to maintain such features and refers to project specifications.</p>
<p>All of the specific objectives within F4 would benefit from a specific and thorough systematic baseline study and update of the many historic environment assets on Mousehold Heath, many of which are recorded within the Historic Environment Record, some of which are not. The baseline survey could be used to enhance the existing Historic Environment Record data set and thus also contribute to objective RV70.</p>	<p>Update project ML40/04 Contact will be made during the first year of the plan to scope out a project and the resources and support available from to do this from Norfolk County Council Environment Service historic environment teams.</p>
<p>Additional means could then be sought to disseminate this enhanced archaeological/ historic environment information in tandem with general and specific aims of Objective H. For example Mousehold Heath has geology, nature and biodiversity trails but no heritage trail. Three themes present themselves, building Norwich (quarrying, brickmaking and extractive industries), William's Chapel and 19th and 20th century military activity.</p>	<p>A consideration for the future as part of project AP20/04 and the production of a signage and interpretation strategy. Delivery of this specify trail would then depend on resources and priorities at the time.</p>

<b>Cultural Comment</b>	<b>Response to comment</b>
Recognising this potential, we would welcome the opportunity have further discussions with yourself about the ways in which Norfolk County Council Environment Service historic environment teams could contribute to the enhancement of Mousehold Heath's heritage through the work of the Mousehold Heath Conservators in the implementation and delivery of the Mousehold Heath Management Plan 2019 – 2028.	Update project ML40/04 The wardens will meet with the new officer as per actions above which will foster a positive working relationship and enable opportunities for other contributions the Norfolk County Council Environment Service historic environment teams could make to assist with the delivery of the plan.

## 5. Habitat

<b>Habitat Comment</b>	<b>Response to comment</b>
Norfolk Wildlife Trust fully support the management work that has taken place and is proposed in the new management plan. We endorse the proposals to maintain and restore areas of heathland and acid grassland with the progress that has been made over the last planning cycle contributing to the Biodiversity Action Plan targets for these habitats	No change to be considered
All looks good.	No change to be considered
I am happy with these proposals.	No change to be considered
So long as restoring heathland which only benefits wildlife is not detrimental to the tree cover. Without the trees the lungs of the city would not be as effective.	No change to be considered
Continue to regenerate the heath Land after the fires of summer 2018	No change to be considered

Habitat Comment	Response to comment
<p>Agree. Area of heathland should be increased if possible, especially if existing areas can be linked up. Dogs should (if possible) be excluded from the Vinegar Pond, where they stir up the water and reduce value of pond for wildlife.</p>	<p>No change.</p> <p>Introducing fencing and preventing access would be difficult because the site is provided for free and open access for the city's residents. Signage asking people not to allow dogs in the pond would be unacceptable by people and previous experience is that such notices are ripped down, which is a waste of resources and also becomes later on the site.</p> <p>The pond never used to hold water all year round and was a seasonal wet area, so this was not a problem although it was in terms of frogs spawning successfully. It does hold water now and benefits the frogs and other aquatic species. As a result of its location and site constraints it is difficult to enhance further.</p>
<p>Its great to see that a balanced approach has been taken to the management of the various habitats on Mousehold Heath. That all habitats have been recognised for their importance for biodiversity and landscape value. Its refreshing to see that a combination of traditional and modern techniques are being used to manage Mousehold Heath.</p>	<p>No change to be considered</p>
<p>Yes but when removing things stop leaving stubs and make sure the area is clear of rubbish such as glass</p>	<p>No change.</p> <p>Unclear what referring to. Removal is in habitat areas and not pathways etc. Tree stumps are removed to ground level. Gorse is cut higher for treatment and then rot and break off. Periodically areas are walked and any remaining gorse stems which need lowering is done.</p>
<p>Again as long as it actually happens fine</p>	<p>No change to be considered</p>
<p>Gilman road needs to be cleared of stinging nettles more frequently for the bike and footpath these users</p>	<p>MHW will monitor and keep cut back as required before there is a problem.</p>

<b>Habitat Comment</b>	<b>Response to comment</b>
Re. ponds: I would like to see introduction of suitable water weeds and marginal vegetation.	No change. Wildlife Pond received native plant species from Marston Marsh and it is being monitored to see how successful establishment.
I like that the plans ensure that Mousehold ecology remains healthy. These are sensible and realistic.	No change to be considered
Agreed	No change to be considered
Heartland most important	No change to be considered
Sounds good.	No change to be considered
Very supportive of these plans - we would like to see a more aggressive program of heath restoration but appreciate the budgetary constraints. Acid grassland is also a very important habitat.	No change to be considered
More attention could be paid to ensure the ponds do not become toxic, particularly in summer they have very extensive algal blooms which will starve the ponds of oxygen, killing much diversity	No change. A problem which happens with sunny warm weather and still water and not specific to the heath and occurs at Whitlingham Broad. Accepted as a natural occurrence and wait for season to change. A semi-natural habitat not intensively managed aquatic feature. We do monitor the situation and previously water has sampled and tested but nothing toxic. Advisory signs are put up if there is a problem.
Fabulous!	No change to be considered

## 6. Other comments

<b>Other Comment</b>	<b>Response to comment</b>
As members of the County Wildlife Sites Partnership, Norfolk Wildlife Trust are happy to be consulted on issues relating to CWS status of Mousehold Heath, when required.	No change to be considered
A management plan is great as long as all stakeholders are held accountable and that the document can be used. Too often we see a lot of work and expense go in to a management plan which does not clearly define timelines and budgetary requirements.	No change to be considered

Good luck.	
I believe the plan meets the commitment to protect and conserve the important natural diversity of Mousehold Heath.	No change to be considered
Ensure that further areas of the heath are not stolen for use by the mountain bikers. Refreshments ie ice cream van, tea van ,provided at Hill Farm Track end if only at weekends in the summer. More bins	No change to be considered Cycling will continue to be dealt with as per the management plan with resources being allocated relative to the level of the problem and the impact. One refreshment van already trading and no additional concession is being prosed due to the impact on the existing trader. Future requests for a licence trade will be considered on a case by case basis by the conservators. Bin provision was reviewed as part of the production of the plan and was approved as specified in the project.
Both the summary and full management plan provide a vision and clear guide to the future management of Mousehold Heath. Its great to see that all areas and management issues have been considered and addressed in this management plan.	No change to be considered
no further comment	No change to be considered
On the whole I am very pleased with how everyone involved looks after this beautiful area in our fine city.	No change to be considered
All good proposals	No change to be considered

Other Comment	Response to comment
<p>Honeysuckle and bramble are important for White Admiral, Ivy is a very important autumn nectar source and hibernation site for Nymphalids, Gorse for Green Hairstreak.</p> <p>The presence of Elm suckers around Zaks is extremely valuable for White-letter Hairstreak (and many other rare insects) and should be a priority in any management plans in that area - it should be explicitly mentioned in the plan.</p> <p>The Turner's Oak has a significant colony of Purple Hairstreak, as do several other oaks on the site. Small Copper and Small Heath require short grassland - typically rabbit-grazed, but recent declines in rabbit population may require more formal management.</p> <p>Nectar sources are generally scarce and thought should be given to pro-actively encouraging the spread of wild flowers through on-site collection of seed and redistribution to appropriate locations.</p> <p>We welcome the creation of glades and the recognition of the value of understory in the woodland areas. Consideration might be given to managing paths and brambles to steer visitors (and their dogs) away from small areas of woodland to provide a refuge for deer and breeding birds. A circle of radius 20-30m would suffice for each area.</p>	<p>No change to be considered Honeysuckle and ivy are not removed from trees.</p> <p>Update Full Plan New project MS70/01 White-letter hairstreak and importance of elm sucker area</p> <p>Update Full Plan New project MH09/01 Significant trees</p> <p>No change to be considered As a result of increased heathland cover and as a result of woodland clearance there have also been a slow improvement through late cutting and removal on acid grassland areas. There are plans to expand these two type of habitat areas in this 10 year plan. Collection of seed and distribution may be considered depending on the success of improving the quantity and quality of heathland and acid grassland habitats.</p> <p>No change to be considered. A relatively small site intensively used by people and it would be very difficult to do in terms. There are small glades within parts of the site which are not part of the glade management programme. which are quiet and away from heavily used paths.</p>

Other Comment	Response to comment
<p>Keeping the Heath managed is paramount in an ever developing City, one of our key spaces need to continue encouraging wildlife, educating all generations to ensure that we keep beautiful wild places alive.</p> <p>Part of this must include allowing people to feel safe in the environment, this is helped by the visibility of wardens, the removal or stop where possible of addicts using the site and discarding needles and bottles.</p> <p>It would be wonderful to have updated waymarked walking trails with points of interested marked along the way, whether this be a certain tree, what butterflies are found in the area or why was this chapel so important.</p> <p>The walking trails should have signage in each car park showing where each walk takes you and how many Kilometres.</p> <p>Information on the different species found on the Heath be it fungi or bird, tree or moth. The more people that are encouraged to the Heath the more respect it will receive.</p>	<p>No change to be considered</p> <p>No change to be considered. Low level problems. More issues on land that borders the heath dealt with by Parks and open spaces.</p> <p>Consideration for the future as part of project AP20/04 and the production of a signage and interpretation strategy. There are existing interpretational panels and earth heritage interest points.</p> <p>Consideration for the future as part of project AP20/04 and the production of a signage and interpretation strategy, AP20/05 Hubs.</p> <p>Consideration for the future as part of project AP20/04 and the production of a signage and interpretation strategy.</p>



**MOUSEHOLD HEATH  
MANAGEMENT PLAN**

**2019 – 2028**

**Mousehold Heath Conservators**

## **Foreword from Councillor Marion Maxwell, Chair of Mousehold Heath Conservators**

*It is a great pleasure to present the new Mousehold Heath Management Plan.*

*It builds on the excellent work done over the last ten years and outlines the new vision and objectives for the next ten and has been produced in partnership between the Mousehold Heath Conservators and officers at Norwich City Council.*

*The new plan creates a link from the vision through to the individual projects which will support the delivery of the eight management objectives. A high level work plan identifies the priority projects to be undertaken each year and will be used to form a more detailed annual work programme.*

*It is a dynamic working document and will be reviewed on an ongoing basis by the Conservators because priorities can change throughout the lifetime of a long term plan.*

*The key priorities going forward include continuing to enhance the biodiversity of the site through the restoration of nationally declining habitats, building on the important work around increasing understanding of the heath through volunteering opportunities and educational programmes as well as ensuring the site offers a safe and welcoming environment for all its visitors.*

*Despite financial challenges and incidents which have resulted in the destruction of habitats and wildlife, I feel the heath is in a better place now than it was five years ago and in a very strong place to meet the challenges it will likely face over the next ten years.*

*I would like to personally thank all of the amazing volunteers who regularly give up their time to help look after the heath, the Mousehold Heath Wardens, my fellow conservators and officers of the council who support the work of the committee.*

*Because of their inspiring dedication and hard work the heath is the wonderful and unique place we see today.*

Councillor Marion Maxwell  
Chair of Mousehold Heath Conservators



*Marion F. Maxwell*

# CONTENTS

## FOREWORD

<b>1. BACKGROUND</b>	<b>3</b>
Norwich City Council	3
Mousehold Heath Conservators	3
Management planning	4
<b>2. INTRODUCTION</b>	
Mousehold Heath	5
<b>3. SITE DESCRIPTION</b>	
<b>General information</b>	<b>6</b>
Location	6
Ownership	6
Site status	7
Staff	7
Budget	7
Legal constraints	7
Leases and licences	8
Utility services	8
<b>A valued open space</b>	<b>8</b>
Visitor appeal	8
Visitor access	8
Public transport	8
Visitor facilities	9
Community involvement	10
Present use	11
Misuse and antisocial behaviour	11
<b>Physical features</b>	<b>12</b>
Climate	12
Hydrology	13
Topography	13
Geology	13
Soils	14
<b>Cultural heritage</b>	<b>14</b>
Past land use	14
Cultural references	15
Archaeological and historical significance	15

<b>Nature</b>	<b>17</b>
Habitats	17
Heathland	20
Acid grassland	21
Woodland	23
Flora	24
Fauna	25
<b>4. A VISION FOR MOUSEHOLD HEATH</b>	<b>27</b>
<b>5. MANAGEMENT PLAN OBJECTIVES</b>	<b>27</b>
<b>6. APPENDICES (<i>see separate document</i>)</b>	
<b>Appendix 1: 10 Year work programme</b>	<b>50</b>
<b>Appendix 2: Project register</b>	<b>55</b>

# **1. BACKGROUND**

## **Norwich City Council**

Norwich City Council is one of four local authorities that provide services to the city of Norwich, along with Broadland District Council, South Norfolk Council and Norfolk County Council. The city council is responsible for approximately 60 per cent of the urban area of Norwich, including the historic city centre, covering a population of approximately 139,900 people (Source: 2016 midyear estimates, Office of National Statistics ONS).

Norwich is an innovative, creative city with big ambition for both the place and the people who live here. The fastest growing economy in the east of England, it is home to the headquarters of 50 major companies, is one of the top shopping destinations in the country, and is the regional cultural capital. Yet, in sharp contrast to this, outward economic prosperity, Norwich has a low-wage economy and high levels of deprivation.

Norwich's position as a regional centre means there are high levels of inward travel for work, shopping, cultural and leisure activities. This means that many of the services the city council provides are used by people who live outside of the city, placing additional pressures on council resourcing. However, this must be balanced against the range of benefits this high inward travel provides, including to the local economy and to the council financially through its share of business rates etc.

The freehold of Mousehold Heath is held by Norwich City Council and the management of the heath is vested in the Mousehold Heath Conservators.

## **Mousehold Heath Conservators**

Mousehold Heath was given to Norwich City Council (then known as the local corporation) in 1880 by the church to look after on behalf of the citizens of Norwich. The City of Norwich Mousehold Heath, Scheme Confirmation Act was passed by Parliament in 1884. The Mousehold Heath Conservators were constituted following the passing of the act to maintain and preserve Mousehold Heath.

The City of Norwich Act 1984 made further provision for the regulation and maintenance of Mousehold Heath by the Mousehold Heath Conservators.

There are 12 Conservators appointed as follows; 9 appointed by the Council (at least 7 of whom must be councillors), 1 from the Mousehold Heath Defenders, 1 from the Norwich Society and 1 appointed by an organisation interested in the conservation of the environment in the city.

The Mousehold Heath Conservators meet four times a year and cover the costs of managing the heath through a precept to the Council.

## **Management planning**

Managing change in the natural environment, preventing the loss of habitats or creating and improving them takes place over many years. The management plan sets out the long term objectives for a site, where changes in the management committee can take place annually, to ensure continuity of management. The plan will enable the Conservators to manage the site effectively; to identify the management required to meet their objectives; to provide a framework for decision making and setting policy; to identify budget requirements, to support grant funding applications and to develop work programmes. A management plan is produced taking into consideration the environmental, cultural and historical attributes of the site along with the visitors it serves, which collectively identify the importance of Mousehold Heath as an open space within a city.

It has been ten years since the introduction of the first Mousehold Heath management plan covering the period 2008-2013 which was revised in 2013 to cover the period 2013 – 2018.

This current document is not a complete re-write of the original management plan agreed through public consultation, as the majority of information within it is still applicable. It has been updated and developed to build on the successes achieved over the last 10 years.

During the timescale covered by a management plan changes in legislation, best practice, financial climate and technology can change, as can trends in the way people wish to use a site. A management plan is a dynamic document which through the annual work plan will enable management to be flexible, adapting to changes in constraints and opportunities, whilst still working towards the vision and objectives which have been defined for the next 10 years.

## 2.INTRODUCTION

Mousehold Heath is a unique open space made up of grassland, woodland, heathland and recreational open space within the city. In Tudor times, Mousehold Heath stretched as far as South Walsham and had a boundary of 35km, and up until the 1900s it was predominantly open heathland. Mousehold Heath is now 88 hectares (184 acre) in area, of which a relatively small proportion is now heathland and not woodland.

The site has played an important part in Norwich's history and is a diverse part of the city's cultural and natural heritage, shaped by its geology, history and previous and current use.

The Mousehold Heath you see today has been influenced by the way the heath has been used in the past including being used for grazing livestock such as cattle, sheep and pigs, gathering fuel, gravel extraction and quarrying and also brick making.

The site has a mosaic of habitats including mature woodland, specimen trees, acid grassland, heathland, scrub and aquatic environments which provide a range of conditions suitable for a variety of plant and animal species, including some which are nationally in decline. Mousehold Heath is a Local Nature Reserve (LNR) and County Wildlife Site (CWS).

The Mousehold Conservators use traditional management techniques such as coppicing and pollarding when managing trees, to look after the site alongside more modern techniques such as humus stripping when trying to increase the extent of heather cover on the heath. The management work is carried out by the Mousehold wardens, volunteers and contractors.

Mousehold Heath has important historical links with the city. The body of William of Norwich was found on the heath. It was suspected he was the victim of a ritual murder and supposedly attained the status of saint and martyr. The heath has been used as a campsite during rebellion, as a military training ground on more than one occasion in its history and was the site of two military aircraft crashes during more recent conflict.

Although important for its wildlife and history, it is much more than a museum or a nature reserve. It is a space that is highly valued as a place where people can enjoy a feeling of being in the countryside whilst still being in the city. It is a place where people can walk, play sport, learn about nature and history, attend an event, or just unwind from the pace of city life.



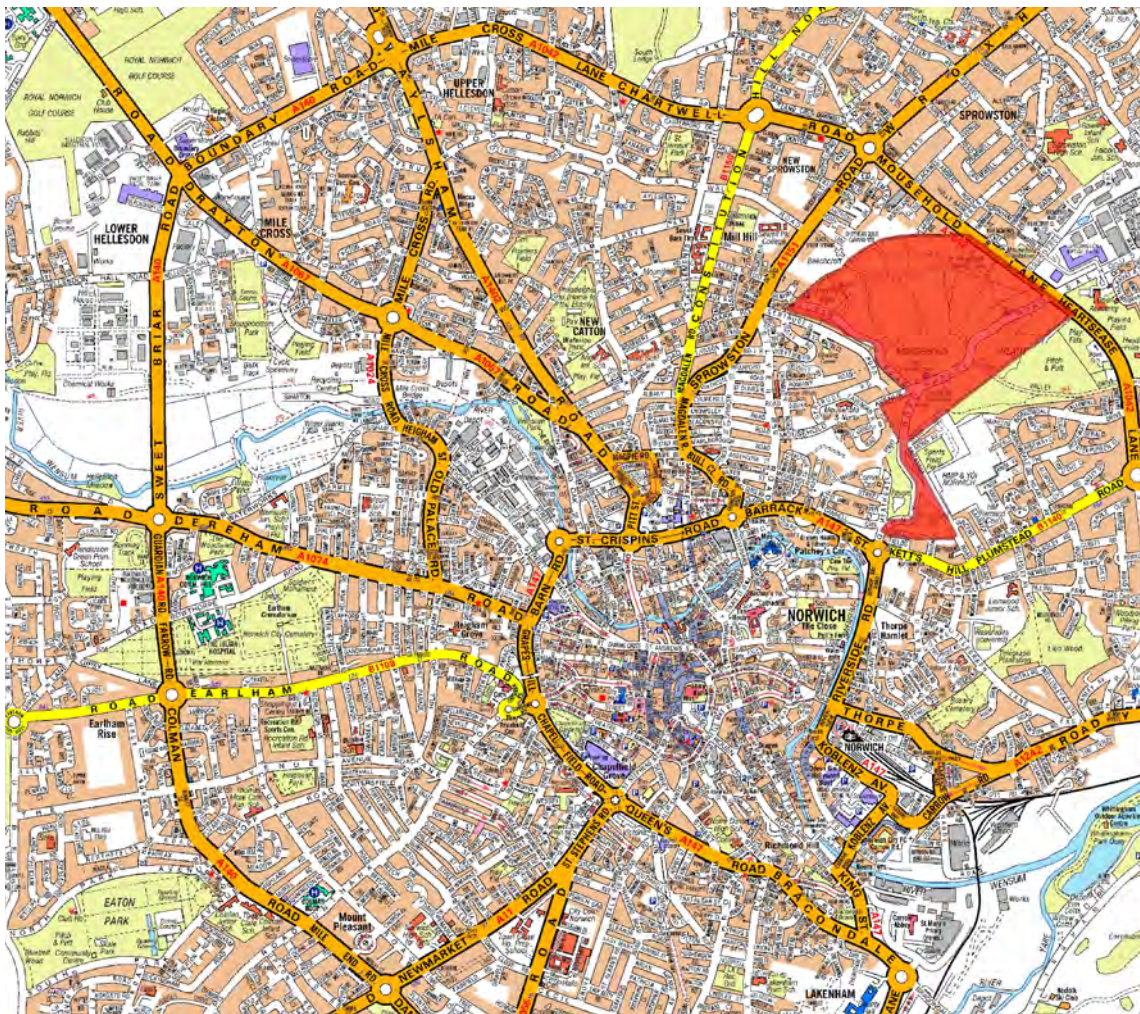
## 3. SITE DESCRIPTION

### GENERAL INFORMATION

#### Location

Mousehold Heath lies in the northeast quarter of the city of Norwich, Norfolk, just inside the city ring road. Central grid reference is TG245104.

#### MAP1: City location map



#### Ownership

The freehold of Mousehold Heath is owned by Norwich City Council. The Mousehold Conservators are responsible for the regulation, maintenance and preservation of the heath.

Mousehold Heath was given to Norwich City Council (then known as the local corporation) in 1880 by the church, to look after on behalf of the citizens of Norwich. Norwich City Council still own the freehold of Mousehold Heath.



In 1884 Parliament passed the City of Norwich Mousehold Heath, Scheme Confirmation Act and, the Mousehold Heath Conservators were constituted following the passing of the act to maintain and preserve Mousehold Heath.

The City of Norwich Act 1984 made further provision for the regulation and maintenance of Mousehold Heath by the Mousehold Heath Conservators.

### **Site status**

Mousehold Heath is designated as a Local Nature Reserve and also a County Wildlife Site (Reference number 1469).

The site and remains of St William in the Wood Chapel is designated a Scheduled Ancient Monument under the Ancient Monuments and Archaeological Areas Act 1979. Recorded as Site of Saint William's Chapel list entry Number: 1003172.

The two aircraft crash sites are covered by the Protection of Military Remains Act 1986.

The Norwich Local Plan 2014 defines Mousehold as an open space and critical drainage area to which Development management policies DM3, DM5, DM6 and DM8 apply.

### **Staff**

The site has two full time wardens who work a rota system to cover weekends and weekdays. They are multifunctional and not only patrol the heath but also carry out management work, surveys, practical task, liaise with users of the heath and assist with developing policies and projects and supervise project delivery.

The work of the Conservators is also supported by a number of officers at Norwich City Council.

### **Budget**

The Mousehold Heath revenue budget for 2017/18 was £221,293 with £100,766 capital held in reserves.

### **Legal constraints**

The freehold of Mousehold Heath is held by Norwich City Council.

Mousehold Heath Conservators are responsible for the management of the heath as set out in the City of Norwich Act 1984.

The site is covered by Mousehold Heath byelaws pursuant to Section 21 of the Norwich City Council Act 1984.

The Wildlife and Countryside Act (1981): provides protection for a wide range of species, some of which occur at Mousehold Heath.

Section 40 of the Natural Environment and Rural Communities Act (2006) (NERC Act), states that:

‘Every public body must, in exercising its functions, have regard, so far as is consistent with the proper exercise of those functions, to the purpose of conserving biodiversity’

The NERC Act applies to Norwich City Council and the Mousehold Conservators

### **Leases and licences**

Zaks restaurant has a lease for the Pavilion building. There is also an annual licence in place for an ice cream van on Gurney Road.

### **Utility services**

One utility company, has statutory rights of access onto the site to repair and maintain their structures and apparatus.

### **A VALUED OPEN SPACE**

#### **Visitor appeal**

Mousehold Heath is used throughout the year by local residents and also people from outside of Norwich and Norfolk. People are attracted to the site because of the sense of being in the countryside whilst in a city, its wildlife, its history and also the events and activities which take place on the site throughout the year.

#### **Visitor access**

The site is easily accessed by visitors, the majority of whom, it would seem, come from the city, through observation and conversations with them on site. The site boundary is unfenced with a large number of established access points and paths. A policy of access restrictions only being put in place where there is a need to control illegal activities is in place; also taking into consideration the scale of the problem, the impact on the site and users and the cost considered against the benefits. The lowest level of intervention to deal with the specific issue being addressed is used.

No cycling is allowed on the heath apart from on the Pink and Orange pedalways which are designated cycle routes

#### **Public transport**

There are three bus services that can be used to access the heath at the time of writing the plan which are:

- First bus 23/24 runs along Plumstead Road, a short walk from St James' Hill

- First bus 11/12 runs along Sprowston Road, a short walk from the Gilman Road entrance
- Konect 50/50A runs through the heath and has a stop on Mousehold Avenue.

#### **Visitor facilities (MAP 2: Facilities)**

- A bandstand with seasonal concerts
- Cycle parking
- Football pitch and changing rooms
- Surfaced access paths are located at Hill Farm rack, Britannia Road car park to Mottram Memorial viewpoint loop and Valley Drive to Gurney Road. The surfaced cycleways are also for use by pedestrians.
- Seating, benches and picnic tables
- Four car parking areas
- Public toilets (adjacent to the pavilion)
- The Fountain Ground has toilet and changing room facilities (for the use of organised sports teams only)
- Nature trail and orienteering routes
- Earth heritage trail
- Refreshment facilities including Zaks restaurant and an ice-cream van concession adjacent to the Fountain Ground sports pitch, Gurney Road.
- Combined litter/dog waste bins
- Public benches in various locations
- Interpretation and information panels

## MAP 2: FACILITIES



## Community involvement

A community approach encourages local people to be involved with the management of the site. The community are involved in a variety of different ways on an individual basis acting as 'eyes and ears' and reporting problems, collecting litter and being directly involved with practical management tasks carried out by a number of groups in conjunction with the Mousehold wardens. There are also volunteer groups that undertake survey work and lead guided walks.

Two local groups, the Norwich Society and the Mousehold Heath Defenders, appoint a representative each to the Mousehold Heath Conservators.

Local groups and schools are involved in regular conservation tasks, these include The Conservation Volunteers (T.C.V.) Assist Trust, Mousehold Heath Defenders, Heartsease Open Academy, Norwich High School for Girls, City College, Easton Agricultural College, DofE students and local business as part of their corporate volunteering activities.

The site also has its own volunteer group involving a number of people from the local community.

The wardens work effectively with local schools on site, running educational programmes and assisting students with college placements and providing them with practical work experience

The use of the heath as a Forest School is supported and used by children from Mousehold Avenue infant School, George White Junior School and Parkside Infant School. The wardens also go into local schools to talk with children about Mousehold Heath.

An annual programme of guided walks is delivered and seasonal wildlife surveys involving local community groups, students and residents are undertaken.

A number of biodiversity workshops have taken place which give an introduction to local wildlife, along with Heritage open weekends and geological walks led by local experts and the Mousehold Heath wardens.

### **Present use**

Mousehold Heath is used frequently for dog walking and other informal recreation such as running or jogging, casual ball games and picnics. There are a large number of paths running throughout the heath, many of which are not part of the formal path network and these tend to come and go over time. Unofficial camping occasionally takes place, and in the wooded areas children and young adults sometimes construct 'dens' and rope swings.

There is a designated cycle way, although unauthorised cycling occurs over parts of the site, and this has caused some localised erosion. "Do it yourself" mountain bike courses are often constructed which can be a hazard for other site users. A potentially more serious problem is the occasional, unauthorised, use of the site for off-road motorcycling.

Organised sporting activities, mainly football, take place at the Fountain Ground. Organised cross-country runs occasionally take place on the site.

The bandstand is still used for occasional concerts, although on a less frequent basis than in the past. Public fetes and similar events have also been organised by Norwich City Council, Mousehold Conservators and Mousehold Defenders.

A constraint on the recreational use of Mousehold is the very busy Gurney Road, which effectively cuts the site in two. Crossing this road can be extremely hazardous

for pedestrians and there is further environmental impact from noise and traffic fumes. Traffic calming measures have been introduced involving the narrowing of the road from near the Rangers House to Valley Drive and speed humps being put in place.

### **Misuse and anti-social behaviour**

As with any open space adjacent to (or, in Mousehold's case, surrounded by) a large urban area, problems of misuse and anti-social behaviour do occur and include:

- deliberate vandalism, including graffiti, to buildings, seats, gates, signage etc
- unauthorised access by motor vehicles, including stolen ones that are often abandoned and set alight
- fly-tipping of rubbish, including green waste
- littering
- dog fouling
- illegal drug taking
- arson (mainly setting fire to vegetation)

The misuse and anti-social behaviour taking place at Mousehold Heath is common to other areas of Norwich and at a relatively lower level than adjacent open spaces. Measures are undertaken to tackle these issues across the city and are dealt with by the wardens in conjunction Norwich City Council, using council policies and processes.

From an ecological viewpoint, the most serious form of misuse is arson. Although controlled burning is used as a management tool on some extensive heathlands, it is carried out so as to minimise damage to wildlife. At Mousehold, the area of heathland remaining is very small, and there is little space available to which heathland wildlife can retreat in the event of a fire, and from where it can re-colonise the burnt areas afterwards.

A further undesirable effect of heathland fires is that they can encourage the spread of birch and also bracken, if these species are present as they are at Mousehold.

## **PHYSICAL FEATURES**

### **Climate**

Temperature (Met Office monthly average 1981 – 2010)

Maximum: 21.4°C (August)

Minimum: 1.3°C (February)

Temperature (Met Office annual average 1981 – 2010)

Maximum 13.8 °C

Minimum 6.4 °C

Rainfall (Met Office monthly average 1981 – 2010)

Maximum: 68.2mm (October and November)  
Minimum: 41.7mm (February)

Rainfall (Met Office annual average 1981 – 2010)  
Annual average: 674.2mm

### **Hydrology**

There are currently no visible springs or watercourses on the heath. There is one shallow rain fed pool, known as the Vinegar Pond, which following being relined with bentonite clay granules in 2012, holds water throughout the year. The pond is located in a slight hollow, but there has been some debate as to its precise age and origins, or whether the pond is artificially lined. A survey in May 2007 and 2011, indicates that the current pond probably originated in the 20th century as a result of ground compaction from quarrying and military activities.

In 2012, a community wildlife pond was constructed using a bentonite clay liner at the Gilman Road end of Valley Drive, adjacent to Silver Birch walk. This permanent feature now offers an important habitat for birds, dragonflies and frogs with an abundance of frogspawn in spring.

It is known that there were other ponds in the past, for example, a small pond formerly existed in the small valley between compartments B and C, but now there is no evidence of this.

### **Topography**

Mousehold Heath is on the western edge of a plateau typically more than 40m above sea level. The site has a varied relief, due to a combination of natural processes and past human activities, especially quarrying, which today give the site much of its interest. The distinctive steeply sided, but flat-bottomed valleys at Mousehold were probably formed during cold stages of the Ice Age, when permafrost would have prevented water from soaking into the gravels and sands as it does today. The valleys would originally have drained into the River Wensum, and they would have cut deeper as the river itself gradually eroded deeper.

### **Geology**

The basic geology of Mousehold Heath consists of 25m of gravels, sands and glacial till on top of a chalk bedrock.

The coarse flint gravel (about 3m thick) which forms the heath's surface, and the underlying sandy gravel and sand (about 5m thick), were deposited by ice sheet meltwater rivers up to 400,000 years ago. Below is several metres of sandy, clayey till with stones (known as 'brickearth'), that was left by an ice sheet. Between the till and the chalk is a thick sequence of sands, known as the Norwich Crag, these are up to a million years old and mostly marine which sometimes includes shells.. The chalk itself is very much older, originating about 70 million years ago in the Cretaceous Period. The chalk was laid down in a warm, crystal clear sea and is exposed at the southern end of Mousehold Heath in St. James' Pit.



## **Soils**

The soils are mainly sandy, which are acidic and nutrient poor on the higher ground. Where trees or bracken have gradually replaced the heathland vegetation, a more fertile surface humus layer has developed. Deeper, humus rich soils with a higher nutrient status occur in the wooded valleys.

## **CULTURAL HERITAGE (MAP 3: Cultural features)**

### **Past land use**

Mousehold Heath is a historic landscape with many features testifying to its past socio-economic importance to the City of Norwich. There are several medieval references which refer to the gradual reduction in size of the ancient and very extensive Thorpe Wood and its replacement by Mousehold Heath, mainly as a result of grazing pressure. These are described by Dr Oliver Rackham in *The History of the Countryside* (1986).

Heathland was formerly regarded as a useful resource, providing grazing and a wide range of products made from heather, gorse and broom; it was also an important source of fuel, especially in areas with little woodland. Bracken was also regarded as a valuable material with many different uses. It is known from historical documents that Mousehold was managed for these purposes since at least the 14<sup>th</sup> Century, when commoners had rights to keep cattle, sheep and pigs on the site.

Rabbits were also introduced and were actively managed for food, and their grazing activities helped delay the succession of the heathland to woodland until the 1950s, when they were decimated by myxomatosis.

Generally, these processes would have had a very positive effect on the heathland habitat, in that they produced a mosaic of vegetation of different ages (thereby encouraging a wider range of wildlife dependent on it), and prevented reversion to woodland. Traditional management practices, such as grazing and cutting, may also have helped prevent bracken from out-competing heather. Active management also limited the build-up of large quantities of combustible material, thereby reducing the risk of catastrophic fires.

Mousehold was also quarried extensively from at least the 16<sup>th</sup> century until well into the 20<sup>th</sup>, a factor that has been responsible for the varied relief of the site with its characteristic 'hills and hollows'. The quarrying, especially the larger scale activity of the late 19<sup>th</sup> and early 20<sup>th</sup> centuries, may have had some adverse effects on the site's vegetation and associated wildlife. However, many heathland species, especially invertebrates, favour bare ground and these may have benefited. It is very unlikely that all the heathland vegetation could have been destroyed during the quarrying, and plants and animals would probably have been able to re-colonise the former quarried areas, once operations had ceased, from adjacent pockets of heathland that survived.

The heath was used for military training from 1790, when a cavalry barracks was built in Barrack Street and there is still a path known as the Cavalry Track, which has



been cleared and is now maintained. During World War Two, limited military training occurred at Mousehold, and an attempt by the War Office to take over most of the area for a battle training ground in 1947 was defeated by strong local protests.

Mousehold Heath may always have been used for public recreation to some extent, but it was not until the late 19<sup>th</sup> Century, and the passing of the 1884 act that created the Mousehold Conservators, that this became the dominant use for the site. From this time onwards, Mousehold became extremely important as a site for open-air recreation by the people of Norwich. Early photographs (e.g. Gorham, 1908) show large numbers of people enjoying the heath on both informal occasions and at organised events. Although there are now fewer organised events, public recreation has remained the major use of the site up to the present day, and it is likely to continue to do so.

### **Cultural references**

There are several well-known cultural references to Mousehold Heath. Two of Britain's most celebrated landscape painters, John Crome (1768-1821), and John Sell Cotman (1782-1842), of the Norwich School of Artists, painted scenes of Mousehold Heath - both works show a very open and typical heathland landscape. Another Norwich School artist, Henry Ladbroke (1800-1870), painted a large work depicting sheep grazing on Mousehold Heath - this is on display in Norwich City Hall.

Local writers were also inspired by Mousehold Heath. George Borrow (1803-1881) mentions his true life meetings with gypsies on Mousehold in his work *Lavengro*, and the writer and World War One poet, Ralph Hale Mottram (1883-1971), also knew the site well and campaigned for its conservation. The Mottram Memorial on St. James' Hill commemorates his association with the area.

### **Archaeological and historical significance**

Within the overall landscape are several individual features of archaeological and historical interest, the most important of which is the site of St. William in the Wood Chapel site, a Scheduled Ancient Monument.

In 1144 the body of a boy, William of Norwich, a tanner's apprentice from Norwich was found on Mousehold Heath. It was thought that he had been the victim of a ritual murder. A chapel founded at the location where his body was discovered was originally dedicated to St Catherine de Monte but following the supposed martyrdom of William, it was rededicated in 1168 and became known as St William in the Woods chapel (Norfolk Heritage Explorer record 406). It is thought that the chapel was located in a wooded grove, complete with wood banks, long after most of the other woodland on Mousehold had turned into heathland (*Rackham* 1986). The chapel and the grove were destroyed during the Reformation in the 16<sup>th</sup> Century, the exact date is not known but the last offering was recorded in 1506 and by 1556 the site was being leased out.

Now only earthworks remain and these consist of bank and ditch enclosures with mounds and dips of flint rubble which is potentially the remains of buildings on the site.

The vegetation in this area is now managed to make the landforms which define the location of the chapel more visible.

Various archaeological finds have been made at Mousehold Heath, including three prehistoric hand axes as well as other flint artefacts

The Vinegar Pond, as well as being a significant wildlife habitat, is also a historic feature in its own right, although it probably dates only from the 20<sup>th</sup> century. Other features include the old tram track, which runs from Mousehold Lane through part of the site to Gurney Road. The latter appears to have been used primarily for goods traffic, especially in connection with the building of an airfield to the north of Mousehold during World War One. The airfield was abandoned in 1921 and is now a distinctive woodland path with high banks on either side.

Mousehold Heath has played a role in several nationally important historical events. During the Peasant's Revolt of 1381, a rebel group camped on the heath while undertaking offensive operations against government forces in Norwich. With them were several high ranking prisoners they had captured earlier. One of these prisoners Sir Robert de Salle, a prominent knight who was in charge of the Norwich defences, was killed by the rebels when he tried to escape.

Mousehold Heath played an important role in Kett's Rebellion of 1549. The rebel force, led by Robert Kett, camped on the heath whilst besieging Norwich. The final battle of Dussindale, at which the rebels were finally defeated by a large government army, is believed by some authorities to have taken place on or near Mousehold rather than on the site of the modern Dussindale housing development.

During the Second World War, two military aircraft crashes occurred at Mousehold Heath. On 12 February 1942, a Hampden bomber came down in the Long Valley, and on 25 July of the same year, a Beaufort torpedo bomber crashed on the Fountain Ground. A memorial plaque to those who died in these accidents was funded and installed by the people of Norwich and unveiled on 22 April 1990.

## MAP 3: CULTURAL FEATURES



## NATURE

### Habitats

Until the early 20<sup>th</sup> Century, Mousehold Heath was predominantly an open heath landscape, probably dominated by dry *Calluna vulgaris* heath and grassy heath. Today, it is largely covered in secondary woodland and scrub, consisting mainly of oak (*Quercus robur*) and birch (*Betula pubescens* and *B. pendula*), with rowan (*Sorbus aucuparia*), which readily invade heathland communities suffering a decline in their management. Since the Second World War, and particularly since 1975, there has been a rapid rate of decline of the open heath communities, a fact that is clearly apparent from aerial photographs taken at various dates.

Mousehold Heath can be divided into a number of different compartments (MAP 4: Compartment map). In the scheme below, the main remaining areas of heathland vegetation are located in Compartments A – D. Compartments E – I consist primarily of non-heathland vegetation including woodland and grassland.

**Compartment A** contains large areas of dense gorse, rabbit-grazed acid grassland and mixed scrub consisting mainly of birch. Heather has largely disappeared from this area. Bracken is mainly confined to the mixed scrub area around the northern part of the compartment. This compartment also contains the Vinegar Pond.

**Compartment B** formerly contained many scattered young and semi-mature birch and oak trees, and extensive gorse scrub. Bracken and heather dominated areas have been managed for several years, but control of bracken has had limited success. Other parts of this area are dominated by grasses, with encroaching gorse and bramble. There is a stand of even-aged birch in the southern part of the compartment.

**Compartment C** is fairly uniform in character, surrounded by woodland and scattered encroaching scrub. Similar to B, the areas of heather are relatively well established, though in places being out-competed by bracken.

**Compartment D** includes the original heathland reclamation 'Pilot Project' area. Some of the heather in this area is long and mature, and in places forms a dense mosaic along with gorse. In some areas, particularly towards the boundary with the pitch and putt course (not part of the heath), mature gorse and broom are dominant. There is considerable birch encroachment over most of the compartment. In areas where topsoil stripping has taken place, there is good heather regeneration.

**Compartment E** consists mainly of woodland and also contains Zaks restaurant. The woodland is mainly birch-oak, a recognised woodland type that invades neglected heathland sites (*Rackham, 1986*), although other species, including rowan and sycamore, are also present. Small remnants of heathland vegetation (mainly gorse and broom), occur within the woodland, and to the north east of Zaks car park, adjacent to Gurney Road, is a small area of acid grassland with anthills. This area is suffering rapid encroachment by both self-sown and planted trees.

**Compartment F** consists mainly of woodland similar in character to Compartment E, and it also contains the remains of St. William's Chapel. This too was formerly a fairly open area that has been invaded by scrub, resulting in the chapel remains being heavily obscured. The Wingfield Sports Ground and the pitch and putt car park are also included in this compartment.

**Compartment G** contains the Fountain Ground sports field, which is maintained as amenity grassland and is surrounded by semi-mature trees. The bandstand is also situated in this area.

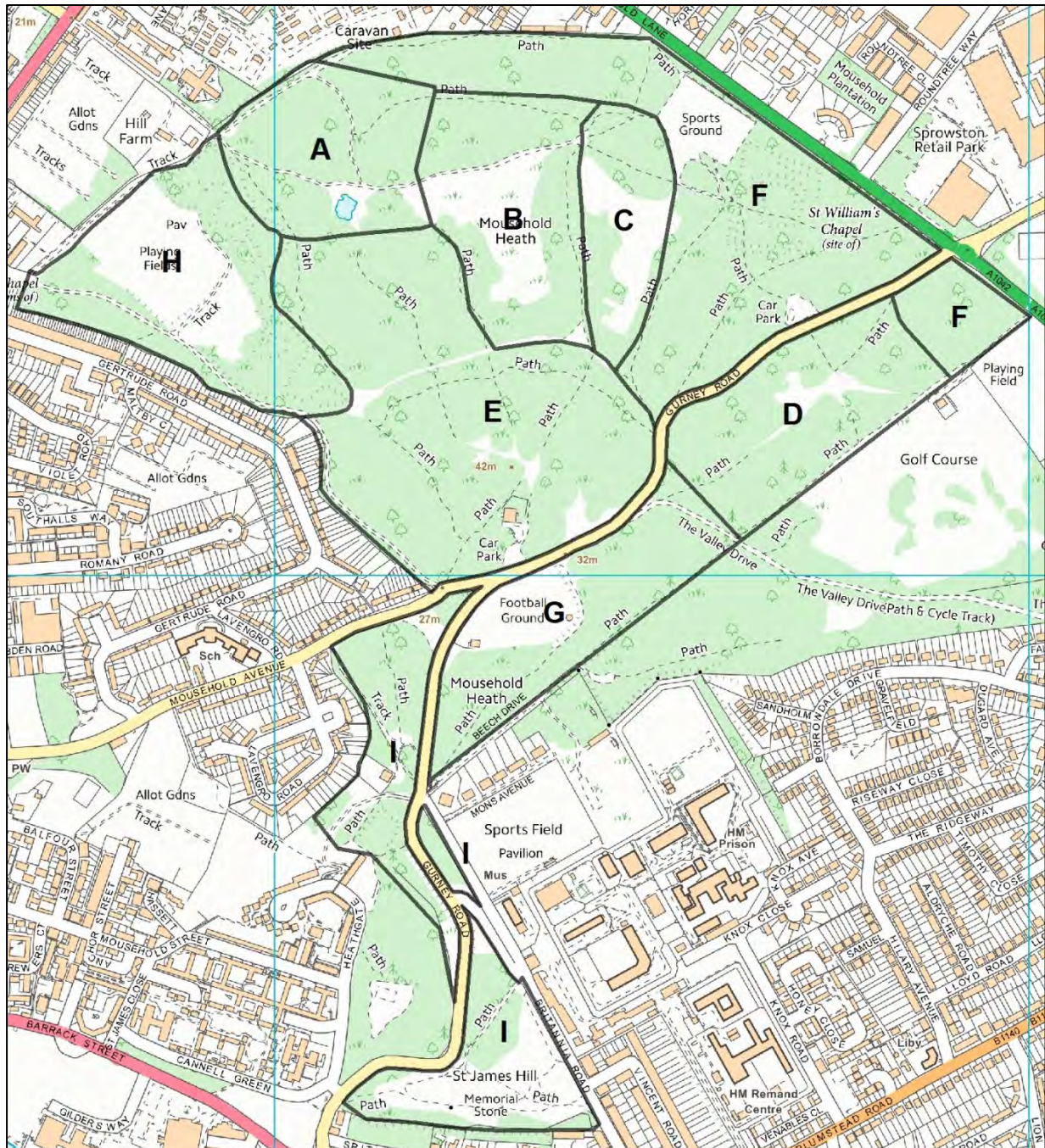
**Compartment H** also contains the Gilman Road Open Space and the Desert Conservation Area, which is managed as a wildflower meadow. Both areas are



surrounded by semi-mature trees and woodland, with small areas of gorse and broom, especially along Gilman Road.

**Compartment I** consists of the narrow southern extension of Mousehold Heath, between Mousehold Avenue and Gurney Road and Britannia and Gurney Roads. The northernmost parts of this area consist mainly of woodland and scrub with remnant heathland vegetation, much of it dying out due to the dense shade. The former Ranger's House is also located here. The southern tip of this compartment is formed by St James' Hill, a wide expanse of grassland fringed by scrub.

#### MAP 4: MANAGEMENT COMPARTMENTS



## **Heathland** (MAP 5: Habitat features)

Of the total area of 88 hectares, approximately 10 hectares of Mousehold Heath is covered by heathland.

Attempts to reverse the rapid loss of Mousehold's open heathland areas to woodland were undertaken at least as early as 1972, when selected areas were cleared of scrub and some of this work involved follow up treatment with herbicides. Asulox was also used to control bracken at this time. Initial results appear to have been encouraging, although the momentum was not maintained.

In 1991, a pilot area (parts of which had been cleared during the 1970s conservation work) was cleared of encroaching vegetation to allow for the regeneration of heather and other heathland flora. Two further areas were cleared in 1994, and these now form one of the core areas of surviving heathland at Mousehold.

Further heathland management work has since been undertaken at Mousehold, including topsoil stripping in Compartment D in 2003 (which has resulted in good heather regeneration), further tree and scrub removal and gorse cutting in Compartments A, B and C in 2005-07, and more topsoil stripping in Compartments A and B (following extensive fires) in 2006-07.

In 2012, Norwich City Council secured grant funding from Natural England's Higher Level Stewardship Scheme (HLS), to restore and conserve areas of heathland and acid grassland over a 10 year period. Working towards the targets and objectives for Norfolk, which contribute to the achievement of regional and national targets.

Currently, areas of heathland on the site are in poor condition due to high nutrient levels leading to invasion by bracken.

An annual management grant totalling £30,600 was awarded to restore heathland and acid grassland areas up until the year 2022.

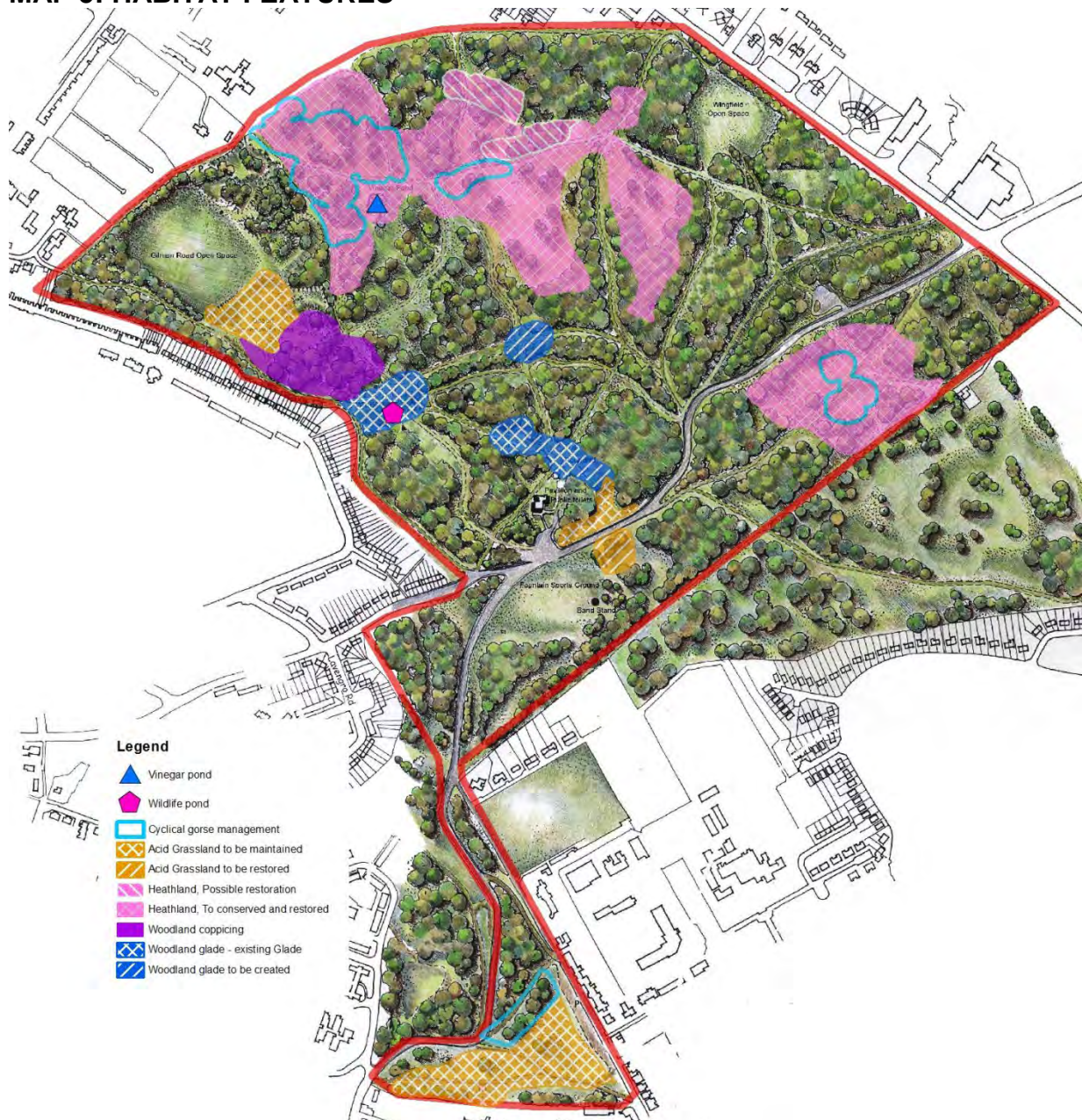
Norwich City Council is a key member of the Norfolk Biodiversity Partnership, which co-ordinates biodiversity activity throughout the County. The Partnership has set local targets for key habitats and species in Norfolk, of which lowland heathland is one.

All members of the partnership have signed up to these targets, including Norwich City Council, and all partners who own or manage heathland are actively working to retain their existing heathland.

The importance of the remaining heathland at Mousehold was also highlighted in the Green Infrastructure Strategy document for Greater Norwich (2007), which advocates that Mousehold Heath could form the key historic component in a major heathland habitat restoration scheme to the northeast of Norwich.



## MAP 5: HABITAT FEATURES



### Acid grassland (MAP5: Habitat features)

Grass species favouring acid soil conditions are an integral component of heathland vegetation communities, although they sometimes replace heather and other heathland plants due to nutrient enrichment. Some areas dominated by grasses occur within the main heathland areas themselves, but more extensive grassland areas are also present. The main ones are 'The Desert', a former sports field that has been developed as a wildflower area, St James' Hill and an area bordering Gurney Road, to the east of Zaks Restaurant ('The Anthills').

Rabbits still inhabit parts of Mousehold, and their grazing and burrowing activities help maintain open grassland (and heathland) areas, as well as creating patches of bare ground that are important for many invertebrate species and as basking places for lizards. Rabbits are, however, either absent from, or have a negligible impact on

some grassland areas at Mousehold. The three main grassland areas identified above are also maintained by mowing.

### *The Desert*

This area is managed by an annual cut in late summer-early autumn, with the arisings being removed to prevent a build up of nutrients (most wildflowers typical of semi-natural grasslands prefer nutrient-poor soil).

This management regime has vastly improved the diversity of wild flower species associated with acidic grassland. This has been proven through regular plant surveys carried out by local volunteers along with the wardens and in 2016, 39 differing species were recorded. Simultaneously, the amount of problem species, such as ragwort and dock, appear to be decreasing.

### *The Anthills*

This grassland area was, until 2006, unmanaged apart from very limited rabbit activity, and self-sown and planted trees and scrub are rapidly encroaching upon it. The area contains numerous large anthills produced by the yellow meadow ant (*Lasius flavus*); the size of these nests indicates that this area has been open grassland for a considerable time. This grassland area is sunny and sheltered, and it is likely to be important for insects; furthermore, anthills have their own specialised ecology. This habitat has improved to the extent that it is included in the sites HLS Agreement.

### *St James Hill*

From photographic evidence and the presence of residual heathland plants such as gorse and broom, this area was formerly heathland but the majority of it is now acid grassland. Developing woodland and scrub occur at the margins of the site controlled from encroaching by removal and treating with herbicide, there are a few individual trees, mainly self-sown sycamores, within the grassland area.

There is a formal disabled pathway leading to the city viewpoint. At the Mottram Memorial, this pathway is managed by a standard grass cut controlling encroaching vegetation.

Targeted areas of grassland are cut annually and arisings removed from site ensuring acidic soil conditions ideal for wild flower, grass and sedge species, of which 79 species were identified by surveys carried out by the Mousehold Heath Defenders in 2016.

Recent removal of trees has improved the view of the city skyline from the Mottram Memorial with all stumps treated with the application of Roundup to prevent regrowth.

Management will continue to prevent the encroachment of trees and vegetation that would impact on the view.



### Wild Flower Glade

In 2013-14, works were carried out to improve the glade adjacent to the wildlife pond by removing vegetation and seeding with a wild flower mix to improve biodiversity of the site.

This area is now closely monitored with regular surveys carried out by local volunteer groups, in 2016 a plant survey was carried out by the Mousehold Heath Defenders recording 40 differing plant species (Mousehold Heath annual report 2018).

This area is currently managed by an annual cut, using brushcutters,, with the arisings being raked and removed to prevent a build-up of nutrients in the autumn.

### **Woodland** (MAP5: Habitat features)

The majority of the trees found on the heath are oak, birch, beech, sycamore, rowan. There are also some cherry and Scotts pine trees and low numbers of species such as hawthorn, crab apple and black thorn. There are a small number of ornamental specimen trees that have been planted like lime, giant redwood, Turners oak, tree of heaven, black pine, plane and chestnut. The tree of heaven poses a risk of being invasive and we have been undertaking proactive work to remove this type altogether from the heath.

It is proposed that most of the woodland areas will be retained during the next ten years although some additional areas may be cleared to reinstate heathland if additional resources became available in the future.

The following are considered when making a decision about the removal of any woodland:

- (i) Has there been a long period of continuity of cover? As these areas are likely to have a higher ecological value than more recently established woodland, as well as being more appealing to visitors.
- (ii) Would the removal of the woodland have a detrimental impact on notable features, such as avenues (e.g. Beech Drive); notable specimen trees?
- (iii) Is it practical or cost effective to remove woodland to attempt to restore heathland and also maintain it in a favourable condition?
- (iv) Is there sufficient evidence present to suggest that clearance of the woodland to regenerate heathland will be successful?

The mature woodland at Mousehold Heath would benefit from more active management, to diversify the age, structure and improve understorey and ground flora.

Work has been done to create rides and glades to encourage species that need more light and facilitate their movement around the site.

Large areas of the woodland are managed on a minimum intervention basis. Tree management outside of the areas identified for clearance as part of a habitat restoration project is restricted to keeping access routes open, for fire safety reasons, to maintain formal 'views' and for safety reasons.

Traditional management techniques such as coppicing and pollarding are used in some areas and adjacent to paths, rides and fire breaks to improve the diversity and structure of the woodland.

Dead and dying trees are retained where possible to provide standing deadwood habitat where the risk to visitors is low and the timber from dead and decaying trees is left on site at the location, to minimise the impact on the organisms which are resident in the timber and to create new fallen deadwood habitat for invertebrates and fungi.

Natural regeneration processes rather than planting are used to maintain the areas identified as being retained as woodland. There is scope for some minimal ornamental tree planting in the more formal amenity areas with a view to replacing some of the aging specimen trees. These are around the band stand, the restaurant Zaks, the picnic seating area at Britannia Barracks and around the sports pitches.

### Tree safety management

Tree safety management is done on a risk assessment basis. The main highways through the route are inspected on annual basis by Norwich City Council arboricultural officers and in accordance with the council's tree safety policy.

Twice a year the Mousehold wardens carry out basic tree safety inspections around all of the pedestrian routes across the site, car parks and those in close proximity of buildings. If their findings require a more detailed assessment from a professionally qualified arborist they are supported by the council's arboricultural team.

Works are carried out by the Mousehold wardens if possible or by NorwichNorse Environmental on the instruction of the council's arboricultural officer following discussion with the Mousehold wardens for more specialist works.

## **Flora**

Areas of heather can still be found on the heath. *Calluna vulgaris* is the main type of heather found, but *Erica cinerea* also occurs, though it is much scarcer. Bracken (*Pteridium aquilinum*) encroaches on these open heath areas as well as being common in the woodland. Other typical plants of heathland communities that grow on Mousehold include sheep's sorrel (*Rumex acetosella*), broom (*Sarothamnus scoparius*) and common gorse (*Ulex europaeus*). Mousehold is also locally important for two species of dwarf gorse (*U. gallii* and *U. minor*) which occur in only two and one other locations in Norfolk.

In some areas (notably Compartment A) heathland grades into acid grassland and small pockets of acid grassland survive elsewhere at Mousehold. In Compartment E, near Zaks Restaurant, large anthills, an indicator of relatively undisturbed grassland and with their own associated wildlife, occur. 'The Desert' is an area of formerly close-mown amenity grassland in Compartment H that is now managed as

a wildflower meadow. A much larger expanse of grassland, although fairly low on flora species, is found on St. James' Hill.

The wooded areas consist primarily of birch-oak woodland, which is typical of recent secondary woodland on heathland sites. A number of other tree species, including some planted exotics such as horse chestnut, a Turner's oak (which forms the centrepiece of the Pavilion car park), and a giant redwood are also present. The flora of the wooded areas, apart from relict heathland vegetation, is generally low on specific species. In some areas it consists mainly of bramble (in the late 19<sup>th</sup> century, the botanist E.F. Linton conducted a celebrated study of brambles on the heath), often growing with honeysuckle and bracken. In some areas where the canopy is particularly dense, ground flora is almost entirely absent. There is also a low diversity of epiphytic vegetation (plants that use trees as a means of support), with only two species of fern, other than bracken, recorded. There are also a few species of common mosses and lichens on some trees, and ivy is locally abundant.

## **Fauna**

### Birds

Many common woodland birds inhabit Mousehold, including sparrowhawk, jay, magpie, kestrel green and greater-spotted woodpeckers, treecreepers and great, blue and long-tailed tits. Also the Song thrush, a Biodiversity Action Plan priority species, is reasonably common. Many parts of the woodland lack undergrowth and/or mature trees, and therefore tend to be lacking in nesting opportunities for birds. However, recent data shows a gradual increase in woodland associated species with more dead wood and older trees creating nesting opportunities.

Birds that are strongly associated with heathland are regularly spotted at Mousehold, however, the remaining heathland area is probably too small to support breeding populations and the intensive use of the site for dog walking would discourage ground nesting species.

### Mammals

Mammals recorded on the heath include bank vole, wood mouse, grey squirrel, rabbit, common shrew, hedgehog, fox, stoat and Reeve's muntjac and roe deer. Red squirrels were present until about 1970, but no longer inhabit the site. Bat surveys and walks have recorded 5 species including common pipistrelle, soprano pipistrelle, Daubenton, brown long-eared and noctules. Other species may be present and hunt over Mousehold Heath although it is not known if they actually roost there.

### Amphibians

The Vinegar Pond is an important spawning site for frogs and toads. Common lizards live in the remaining open heathland areas, and slow-worms are also present. Adders are said to have lived there in the past, but there are no recent records. All British reptile species declined considerably during the last century, mainly due to habitat loss. Although slow-worms still live in urban areas, the presence of common lizards so close to a city centre is exceptional.

### Invertebrates

Most invertebrate groups were under-recorded at Mousehold, but in recent years a number of surveys have been undertaken. The site is known to be of importance for solitary bees and wasps, especially for species associated with heathland or bare ground habitats. A study carried out by the County recorder found 82 species present, with 12 scarce and notable species.

Monthly Bumblebee surveys are carried out with 7 species being recorded

Dragonflies and damselflies are often seen at Mousehold Heath, especially near the Vinegar Pond, and regular recording of these was started in 2008.

Two Butterfly Conservation Butterfly Monitoring Scheme transects are walked on the site. Species include the green hairstreak (*Callophrys rubi*), the small heath (*Coenonympha pamphilus*), white-letter hairstreak (*Satyrus w-album*) and the white admiral (*Ladona camilla*), all of which are Biodiversity Action Plan species. The elms suckers adjacent to the pavilion are extremely valuable for the white-letter hairstreak.

A number of moth surveys are carried out each year, with over 220 species recorded to date. Many of these species are uncommon and closely associated with locally scarce heathland and acid grassland habitats.

## **4. A VISION FOR MOUSEHOLD HEATH**

'The Mousehold Conservators are committed to safeguarding the long term future of Mousehold Heath as a high quality and accessible natural area for residents and visitors to the city to enjoy.

To manage the heath in a way that protects and enhances the valuable historic and natural features of the site, and provides opportunities for all to be involved in looking after and learning about the site.'

The vision will be achieved through objectives, management prescriptions and projects that are set out in this document.

The Mousehold Heath project register contains the individual project details including project numbers and project titles.

## **5. MANAGEMENT OBJECTIVES**

There are eight management objectives.

- A) To ensure Mousehold Heath is a welcoming place for people to visit.
- B) To protect Mousehold Heath and ensure that it is a safe and secure place to visit.
- C) To ensure that Mousehold Heath is clean and well maintained.
- D) To manage Mousehold Heath in a way that has a positive impact on the environment.
- E) To improve habitats and the natural environment for wildlife to enhance the biodiversity of Mousehold Heath.
- F) To safeguard the historic landscape, archaeological features and buildings of Mousehold Heath.
- G) To provide opportunities for local communities to be involved in in all aspect of our work.
- H) To promote Mousehold Heath to increase awareness, knowledge, understanding and a sense of pride.

## **A. To ensure Mousehold Heath is a welcoming place for people to visit.**

Mousehold Heath will be managed in a way that continues to attract visitors to the site.

### **Management**

The Mousehold Conservators ('Conservators') are responsible for the management of the site and are legally empowered through the Norwich City Act 1984 to maintain and preserve the heath, and to ensure that the city has free access to the site.

The heath is used for a wide range of activities but occasionally it is misused. Trends will vary over time and the Conservators will need to respond to changes in activities and seek to ensure that the site continues to be maintained through continued improvements in provision and management.

Continuous improvement will be delivered by the Conservators and Mousehold Heath wardens ('wardens') who will learn from other examples of best practice. Implementation of any learning will be done through the management plan and changes in management techniques.

A Green Flag submission, the adopted standard for a well-managed public space, will form the basis for an ongoing annual independent quality assessment and continuous improvement needs to be demonstrated to retain the award.

### **Personal safety**

There is often a perception among visitors to open spaces, especially large ones containing woodland that they are unsafe to visit, due to a feeling of being isolated in secluded areas.

There is a balance to be struck with a natural area such as Mousehold Heath. Key access points will be developed in terms of being open and providing information to enable visitors to orientate themselves. There will be clear sightlines and clearly identifiable key pathways. Glades and areas of heathland and grassland will be maintained as open areas. Increased use and presence will also reduce people's personal safety concerns.

### **Access points**

Although much of the heath is 'informal countryside' there is a need to ensure that key access points are maintained and key information provided about the heath and who it is managed by. This will increase understanding of the site and visitors enjoyment of it.

## **A1) The Mousehold Conservators will manage the site and discharge their duties in accordance with the Norwich City Council Act 1984**

### AF00 Financial planning and recording

AF00/01 PREPARE ANNUAL BUDGET

AF00/02 BUDGET MONITORING AND REPORTING

AP20 Prepare/revise site management plans

AP20/01 NEW MANAGEMENT PLAN  
AP20/02 MANAGEMENT PLAN REVIEW

AP60 Prepare/plan annual work

AP60/01 ANNUAL WORK PROGRAMME  
AP60/02 ANNUAL WORK PROGRAMME MONITORING

AP80 Convene meeting, Site Management Committee

AP80/01 MOUSEHOLD CONSERVATORS MEETING  
AP80/02 MOUSEHOLD CONSERVATORS MANAGEMENT SUB GROUP  
MEETING  
AP80/03 MOUSEHOLD CONSERVATORS ITINERANT

AR01 Prepare report, project review, new project

AR01/05 BRITANNIA CAR PARK REVIEW

AR20 Prepare report, annual progress

AR20/01 MOUSEHOLD CONSERVATORS ANNUAL REPORT  
AR20/02 ANNUAL REPORT PUBLIC SUMMARY DOCUMENT

AR30 Prepare correspondence, general

AR30/01 GENERAL ENQUIRIES

AR60 Prepare report, other

AR60/00 MOUSEHOLD CONSERVATORS PROJECT APPROVAL AND  
RECORDING  
AR60/01 MOUSEHOLD CONSERVATORS QUARTERLY MANAGEMENT  
UPDATE  
AR60/02 MOUSEHOLD CONSERVATORS QUARTERLY BUDGET  
MONITORING REPORT  
AR60/03 MOUSEHOLD CONSERVATORS ANNUAL WORK PROGRAMME  
REPORT  
AR60/04 MOUSEHOLD CONSERVATORS PRECEPT REPORT

**A2) To provide opportunities for the Mousehold Conservators to develop their understanding of the management of the site and of best practice in the management of public open space and especially heathland.**

AP80 Convene meeting, Site Management Committee

AP80/03 MOUSEHOLD CONSERVATORS ITINERANT

AT00 Training and management

AT00/04 BEST PRACTICE VISITS

**A3) To continuously improve the management of the site through the development of staff and contractors**

AT00 Training and management

AT00/01	STAFF 1:1s
AT00/02	STAFF APPRAISAL
AT00/03	STAFF DEVELOPMENT PLANS
AT00/04	BEST PRACTICE VISITS

AT40 Liaise and supervise staff/contractors

AT40/01	CONTRACT MONITORING/IMPROVEMENT NORWICH NORSE ENVIRONMENTAL
AT40/02	CONTRACT MONITORING/IMPROVEMENT NPS NORWICH
AT40/03	CONTRACT MONITORING EXTERNAL CONTRACTORS

**A4) To ensure that key access sites are welcoming and encourage people to explore the site**

AP21 Prepare/revise plan. Strategic planning

AP21/04	INTERPRETATION STRATEGY
AP21/05	ACCESS HUBS

**A5) To submit applications for awards, where appropriate, for awards that recognise the positive management of Mousehold Heath**

AI00 Inspections and audits

AI00/01	GREEN FLAG AWARD
---------	------------------



## **B. To protect Mousehold Heath and ensure that it is a safe and secure place to visit.**

### **Protection**

The wardens play an important role in protecting the heath by carrying out regular patrols and also when they are out on the site carrying out practical tasks and survey work.

Patrols cover the whole site but known 'hotspots' relating to vandalism, misuse or fly tipping, will be visited more regularly. The wardens will advise visitors regarding issues of misuse and by drawing their attention to the byelaws. In the case of more serious misuse the matter will be passed to a more appropriate authority to deal with.

A community approach is taken to the safeguarding of the heath, with the wardens working with regular visitors to the site and the Mousehold Heath Defenders ('Defenders') acting as additional 'eyes and ears'.

Any incidents the wardens see or are notified of, are investigated and immediate action is taken where possible. Information is shared with the relevant authorities when it is appropriate to do so. The wardens will also work proactively with the police and fire service when necessary to reduce the risk of future incidents occurring. The recording and analysis of incidents could be improved through the introduction of an incident reporting system.

### **Licences and leases agreements**

Licenses and lease agreements relating to property and business use are negotiated by NPS Norwich on our behalf, but with the approval of the Conservators. They also deal with one off access requests relating to adjacent properties.

Meetings are held with leaseholders whose activities will potentially have an impact on the heath.

Occasionally requests are received from people wishing to carry out projects or research on the heath and permission to undertake these types of activity is decided by the Conservators.

### **Facility provision**

The heath currently has a senior size football pitch and changing facility. The booking and pitch management is carried out by NorwichNorse Environmental and the changing room facility is maintained by NPS Norwich on behalf of the conservators.

The provision of this facility will need to be reviewed in the future taking in to account the level of use, other local provision and the cost of providing it in relation to the income received, This will also need to take into consideration other possible recreational uses.

Seating is provided at a number of locations across the heath to reflect or observe a view of the city. The Conservators respond to requests for benches or seats favourably, this will always be subject to the location being appropriate and the

resource available for purchase and installation. The development of a bench sponsorship scheme will be considered.

The heath has one public toilet block located at the Fountain Ground car park and in very close proximity to Zaks restaurant. The toilet block requires some investment to improve the quality of provision.

Each of these decisions cannot be made in isolation and due consideration will also need to be given to how the conservators wish to see the main formal recreational area of the heath containing the Fountain Ground is used in the future, with regards to visitor facilities, informal recreation and play

### **Vehicular access management**

Where possible restrictions are not put in place which would impede visitor access to the site, however, there are places where it is necessary to prevent unauthorised motor vehicle access to the site. This is to protect the site and also visitors.

Restrictions installed can take the form of gates, barriers, drop down bollards and rows of low bollards.

### **Legal obligations**

As well as the Norwich City Council Act 1984, the heath is managed with the aim of meeting all the legal requirements of the Health and Safety at Work Act 1974. Other applicable regulations and policies and procedures are also followed as defined by Norwich City Council.

### **Tree safety**

On such a largely wooded site with paths and roads running through the site, tree safety is a priority and there is always a need to balance risk reduction with the conservation of notable trees and dead/ dying trees.

Tree inspections are carried out twice a year by the wardens. The Mousehold Heath tree safety inspection regime would benefit from being reviewed so that it can be integrated with the Council's tree safety policy regarding inspectors qualifications, methodology, recording and ordering.

Any work required identified during the inspections is done by the wardens or, if it is of a more specialist nature, it is completed by NorwichNorse Environmental.

### **Site hazard identification and management**

The wardens risk assess their activities and also those undertaken with volunteer groups, ensuring that safe systems of work are used and appropriate qualifications held for those activities that require them. Personal protective equipment (PPE) identified as being required by the risk assessments is worn by the wardens and if necessary provided to the volunteers.

NorwichNorse Environmental and NPS Norwich (joint ventures with Norwich City Council), who undertake work on the site have health and safety management systems in place that have been checked prior to the contracts being awarded. These are monitored on an annual basis by the contract managers. Any sub-

contractors working on behalf of the joint ventures have also been checked for compliance prior to work being awarded.

There is no annual site safety inspection carried out however, the wardens will deal with or make safe any hazards identified as part of their patrol and management activities on site. An annual inspection and a recording and rectification system/process will be introduced during the life of this plan.

**B1) To protect the integrity of the heath and in accordance with the Norwich City Council act 1984**

AS00 Site and species safeguard and law enforcement

AS00/00 LEGAL ENFORCEMENT ACTION

AS10 Protect site, visitor permit system

AS10/00 LICENCE AND PERMIT SCHEME

ML00 Liaise with stakeholders, owners/occupiers

ML00/01 ZAKS RESTAURANT

ML30 Liaise with stakeholders, neighbours

ML30/01 BRITANNIA CAFÉ

ML30/02 RANGERS HOUSE

ML00 Liaise stakeholders, owners/occupiers

ML00/04 GAS PIPELINE

ML40 Liaise stakeholders, local/national authorities

ML40/01 NORWICH AREA TRANSPORT STRATEGY

ML40/02 NORWICH CITY COUNCIL – AREA MANAGEMENT TEAM

MP00 Patrol, general

MP00/01 SITE PRESENCE

MP00/02 SITE BOUNDARIES AND HOSTPOTS

RH35 Collect data, public use, trespass/theft/damage

RH35/01 ILLEGAL ACTIVITIES CRIME

**B2) To work with the emergency services to work on joint problem solving to deter and resolve misuse of the site.**

ML60 Liaison with stakeholders, emergency services

ML60/01 NORFOLK CONSTABULARY

ML60/02 NORFOLK FIRE AND RESCUE SERVICE

**B3) To increase visitor perception of feeling safe on the heath.**

AP21 Prepare/revise plan. Strategic planning

AP21/04 INTERPRETATION STRATEGY

AP21/05 ACCESS HUBS

AT00 Training and management, general

AT00/05 SAFEGUARDING CHILDREN AND VULNERABLE ADULTS

MP00 Patrol, general

MP00/02 SITE PRESENCE

**B4) To provide facilities for formal and informal recreation where appropriate**

AF00 Financial planning and recording

AF00/03 ELECTRICITY

AF00/04 GAS

AR01 Prepare report, project review, new project

AR01/03 FORMAL AND INFORMAL SPORTS PROVISION REVIEW

MI60 Provide/manage events

MI60/03 FOOTBALL PITCH PROVISION

MI60/04 FOOTBALL BOOKINGS MANAGEMENT

**B5) To provide a public toilet facility at the heath**

AR01 Prepare report, project review, new project

AR01/02 PUBLIC TOILETS PROVISION REVIEW

**B6) To manage vehicular access to prevent damage to the site and to reduce the risk to visitors.**

AP50 Prepare/revise plan, safety

AP50/01 VEHICLE ON SITE POLICY

**B7) To provide seating.**

AP21 Prepare/revise plan. Strategic planning

AP21/02 BENCHES AND SEAT PROVISION PLAN

AR01 Prepare report, project review, new project

AR01/05 SEAT AND BENCH SPONSORSHIP SCHEME

**B8) To ensure that the heath is managed in accordance with relevant legal obligations.**

AI30 Implement inspection, site safety

AI30/01 ANNUAL SITE SAFETY INSPECTION

AI30/02 TREE SAFETY INSPECTION

AI30/03 RISK ASSESSMENT

AP50/02 TREE SAFETY MANAGEMENT POLICY

## **C. To ensure Mousehold Heath is clean and well maintained.**

### **Boundary protection maintenance**

Infrastructure relating to the protection of the boundary relating to gates, barriers and bollards is inspected on ad-hoc basis by the wardens and damaged/missing structures are maintained/replaced on a reactive basis.

A phased programme of bollard replacement will be developed as sections of bollards tend to become rotten and vulnerable at a similar time.

### **Litter bins and waste**

There are 16 litter bins which can be used for litter and also the disposal of dog waste.. Litter bins are cleaned and maintained by NorwichNorse Environmental.. Bins are emptied regularly to ensure that they do not become full or overflow.

In 2017 a review of the provision of litter bins was undertaken. None of the bins were identified as being dispensable or required moving to alternative locations.

There are currently no recycling bins on the site. The possibility of installing different bins which enable recycling will be considered during the life of this plan. Putting in recycling bins would depend on the budget to do so as well as the style bin being deemed appropriate for the natural landscape. Vehicular access also needs to be considered in order to empty the bins.

. A daily litter pick covers the key areas and hotspots of the site. The litter picker (from NorwichNorse Environmental) will report any issues such as fly tipping to the wardens.

Fly tipping is reported through to NorwichNorse Environmental and is removed within 24 hours. If there is evidence of who was responsible for the fly tipping the matter is passed to the Norwich City Council environmental protection team who will pursue the matter further.

### **Public toilets**

The public toilets located near to Zaks restaurant are permanently open and cleaned on a daily basis. The condition of the toilets is poor which can make cleaning difficult. A refurbishment of the block, using capital held in reserve by the Conservators, needs to be considered and will be completed after a review of sports provision and the changing rooms has been completed.

Any damage to the toilets is reported to NPS Norwich for repairs to be made.

### **Paths**

The majority of paths on the heath are natural surfaces.

The vegetation on path boundaries is maintained to prevent encroachment and paths becoming inaccessible.

### **Car parks**

Car park surfaces are not covered with tarmac but compacted stone and are regraded on an annual basis to remove potholes. Compacted stone is a preferred option as it discourages people from speeding in the car park and putting other visitors at risk.

This work is resource intensive so a more cost effective solution will be explored during the life of this plan.

### **Mousehold warden office**

The wardens are located at the Heathgate Area Housing Office on the boundary of the heath. A recharge is made by the council for the use of this facility and all repair and maintenance costs are included in this charge.

Periodically the council carries out a review of its assets and the future of the office cannot be guaranteed. Depending on the outcome of the review of sport provision on the heath, the building which is currently a changing facility located at the Fountain Ground will have an option appraisal carried out regarding its suitability as a site office for the wardens.

### **Equipment maintenance**

The wardens have chainsaws and brush cutters for carrying out practical maintenance on the heath as well as a stock of hand tools for volunteer tasks. Mechanised equipment is serviced and maintained by a specialist and hand tools are checked and maintained by the wardens.

### **Graffiti**

Graffiti on hard surfaces is removed within 14 working days of being reported.. Where possible, offensive graffiti is removed within 24 hours.

Graffiti occasionally occurs on trees or other natural absorbent surfaces. On non-living surfaces the wardens will sand the surface to remove it. Graffiti on trees is left to weather with time as the use of graffiti cleaning products or sanding would be detrimental to the health of the tree.

### **Bandstand**

The bandstand is repaired on a reactive basis following any damage. It would be beneficial to get a condition assessment of the bandstand completed to enable a maintenance plan to be developed.

The bandstand is cleaned twice a year in April and September.

## **C1) To maintain and where necessary install additional boundary protection**

### ME01 Manage site infrastructure, boundary features

ME01/01	GATES , FENCING AND BARRIERS
ME02/02	BOLLDARDS

### ME02 Manage site infrastructure, other structures

ME02/01	BENCHES, SEATS & PICNIC TABLES
---------	--------------------------------

**C2 To provide and maintain litter bins and remove rubbish and waste**

ME04 Remove rubbish/maintain litter bins

ME04/01 LITTER PICKING  
ME04/02 LITTER BINS  
ME04/03 FLY TIPPING

**C3 To provide and maintain public toilets and changing rooms**

ME12 Site buildings maintain/improve

ME12/04 CHANGING ROOMS

ME14 Site buildings, maintain/improve toilets

ME14/01 TOILET CLEANING

**C4 To provide and maintain paths**

ME41 Provide/maintain paths

ME41/01 MAIN PATHS  
ME41/03 CYCLEWAYS  
ME41/04 ACCESS FOR ALL PATHS

**C5 To provide and maintain car parks**

ME44 Provide/maintain car parks

AR01/01 CAR PARK SURFACING REVIEW  
ME44/01 CYCLE STANDS  
ME44/02 CAR PARK SURFACING

**C6 To provide and maintain accommodation for the Mousehold Wardens**

ME70 Provide/maintain staff facilities, general

ME70/01 WARDEN OFFICE OPTIONS APPRAISAL  
ME70/02 WARDEN OFFICE ACCOMMODATION

**C7 To maintain tools and equipment so that it is safe to use**

MM20 Acquire and maintain tools and equipment

MM20/00 TOOLS & EQUIPMENT MAINTENANCE

**C8 To keep the site clear of graffiti**

ME12 Site buildings, maintain/improve

ME12/01 REMOVE GRAFFITI

**C9 To provide and maintain the bandstand**

ME12 Site buildings, maintain/improve

ME12/02 BANDSTAND CLEANING  
ME12/03 BANDSTAND MAINTENANCE





## **D. To manage Mousehold Heath in a way that has a positive impact on the environment.**

The work carried out on the heath contributes to the delivery of the council's environmental strategy through the delivery of projects associated with achieving the other seven objectives.

In its environmental strategy the council has committed to:

- Increase energy efficiency in council owned property
- Reduce disposal of waste to landfill
- Increase recycling
- Reduce consumption of paper in council activities
- Reduce consumption of fuel in council buildings and vehicles

This is being achieved through a number of initiatives:

- Recycling facilities in all offices for paper
- Recycling facilities for cans and bottles in all offices
- Default settings on printers for black and white, double sided, draft quality
- Only essential operational car users provided with city centre parking to encourage use of the park and ride or cycling to work
- Mileage allowance paid for operational use of bicycles at work

### **Climate change**

The influence of human activities on our climate is now widely recognised. Climate change represents a major management challenge for parks and open spaces. With more frequent extreme weather events affecting biodiversity, hydrology and the built environment.

Norwich City Council has contributed to the work that Norfolk County Council have done looking at extreme weather events in Norfolk and the impact they will have on services.

The limited hard surfaces on the heath are permeable so that rainfall filters through into the groundwater.

### **Pesticide use**

Pesticide use is minimal and where possible other control methods are used, such as tree poppers and volunteers.

The contractor is responsible for ensuring that any chemicals used are approved for use by the council, that they are stored correctly, staff have the relevant qualifications to use them and all usage is logged.

Any reviews of operating methods carried out by NorwichNorse Environmental based on industry best practice will be delivered on the heath as part of citywide contract improvements.

There is no bedding planting or peat used.

### **Tree planting**

No trees are brought onto the site for planting.

### **Procurement**

- Benches and seats are produced using timber from sustainable sources.
- Where appropriate products are made from recycled plastic.
- Surplus equipment that has not reached the end of its product life will be used elsewhere on the site

**D1) To management the site in as sustainable way as possible.**

THROUGH THE DELIVERY OF RELEVANT PROJECTS THROUGHOUT THE OTHER 7 OBJECTIVES

AP21 Prepare/revise plan, strategic planning

AP21/01 NCC ENVIRONMENTAL STRATEGY

## **E To improve habitats and the natural environment for wildlife to enhance the biodiversity of Mousehold Heath.**

### **Woodland**

Although formerly a large area of heathland, Mousehold is now predominantly a secondary woodland habitat. A large amount of the woodland is managed with minimum intervention and natural processes allowed to occur.

A programme of coppicing and felling is used to maintain a diversity of age range and structure in the woodland.

Glade and ride areas are created and maintained linking together areas to further increase diversity within the woodland.

Coppicing is used to create pockets of a more diverse age range within the woodland and also adjacent to path, ride and glade edges to create a transitional habitat between the open areas and woodland.

Standing dead and decaying wood will be retained; fallen deadwood and pieces will be left as large as possible at their original location.

The importance and value of honeysuckle and ivy in the woodland as a nectar source is recognised and there is not a policy of removing either of these species.

There are specific trees which will be managed outside of standard management regimes as a result of their historic or biodiversity significance, such as their age, impact in the landscape or a habitat for a specialist species. These trees will be identified and their location mapped, to ensure that management is in accordance with the reason for them being designated 'significant' trees.

### **Grassland and heathland**

The majority of the heathland and flower rich meadows have been lost over time. The remaining areas of heathland and acid grassland are vulnerable to being lost too through the encroachment of trees and shrubs.

Existing areas of acid grassland will be cut and the arisings removed. Work will be carried out to remove trees and shrubs from remnant acid grassland to increase the coverage of the grassland.

The areas of existing heathland will be maintained by removing bracken and any encroaching shrubs or saplings. Gorse will be managed in some cases removing it and in others managing it through rotational cutting.

Though the priority remains to maintain the areas of existing heathland and those restored over the life of the last management plan, new areas will be created and maintained, subject to the resources being available to do this. To do this shrubs will be removed to allow light into the area and then the surface layer of humus stripped, to deplete the nutrient resources and to stimulate the dormant heather seed bank to germinate.

## **Ponds**

The ponds on the heath will be managed to improve biodiversity whenever possible, removing vegetation from within and around them, when necessary and in accordance with industry best practice.

## **Invasive and undesirable species**

Invasive and undesirable species will be removed based on an assessment of the threat they pose to a particular habitat.

Where a particular problem is identified, the species will be removed by cutting, applying selective herbicide, cutting and pulling.

## **Recording and monitoring**

Information will be collected through a range of different methods about species and habitats to enable the impact of the different management regimes on the site to be measured in terms of effectiveness. This information will also inform ongoing decision making and guide the development of projects in the future.

### **E1) To maintain and improve, where appropriate, woodland habitats**

#### MH00 Manage habitat, woodland, coppicing

MH00/01 COPPICING

#### MH03 Manage habitat, woodland, aiding natural regeneration

MH03/01 NATURAL REGENERATION

#### MH04 Manage habitat, woodland, maintaining ride/path/glade

MH04/01 GLADE MANAGEMENT, MAINTAIN

MH04/02 GLADE MANAGEMENT, CREATION

MH04/03 PAVILION FIRE BREAK

#### MH08 Manage habitat, woodland, by managing deadwood

MH08/01 DEAD AND DECAYING WOOD

#### MH09 Manage habitat, forest / woodland / scrub, by other activities

MH09/01 SIGNIFICANT TREES

### **E2) To maintain, improve and increase, where appropriate, acid grassland**

#### MH12 Manage habitat, grassland by mowing

MH12/01 MAINTAIN ACID GRASSLAND

#### MH14 Manage habitat, grassland by scrub control

MH14/01 RESTORE ACID GRASSLAND

### **E3) To maintain, improve and increase, where appropriate, heathland**

#### MH31 Manage habitat, heath, by scrub, tree control

MH31/01 SCRUB AND TREE REMOVAL

MH35 Manage habitat, heath, by cultivation to accelerate leaching

MH35/01 HUMUS STRIPPING

MH39 Manage habitat, heath, by other activities

MH39/01 BRACKEN REMOVAL

MH39/02 ROTATIONAL CUTTING COMMON GORSE

MH39/03 COMMON GORSE REMOVAL

ML40 Liaise stakeholders, local/national authorities

ML40/06 NATURAL ENGLAND HLS AGREEMENT

ML40/08 NATURAL ENGLAND RE-NEGOTIATE HLS AGREEMENT

**E4) To maintain and improve, where appropriate, aquatic habitats**

MH60 Manage habitat, open water, general

MH60/01 VINEGAR POND

MH60/02 WILDLIFE POND

**E5) To manage invasive species**

MH29 Manage habitat, controlling invasive species, other activities

MH29/01 LAUREL

MH29/02 JAPANESE KNOTWEED

MH29/03 HIMALAYAN BALSAM

MH29/04 SYCAMORE

MH29/05 RHODODENDRON

**E6) To manage specific species**

MS30 Manage species, mammals

MS30/01 BAT BOXES

MS70 Manage species, Lepidoptera

MS70/01 WHITE-LETTER HAIRSTREAK

**E7) To survey and monitor fauna to assess management impacts and inform future decision making.**

RA06 Collect data, mammals, list species

RA06/01 MAMMALS SPECIES LIST

RA12 Collect data, birds, survey

RA12/01 COMMON BIRD CENSUS

RA16 Collect data, birds, list species

RA16/01 BIRDS SPECIES LIST

RA26 Collect data, herptiles, list species

RA26/01 REPTILES SPECIES LIST

RA42 Collect data, lepidoptera, survey

RA42/01 BUTTERFLY CONSERVATION SURVEY

RA44 Collect data, lepidoptera, count, estimate, measure

RA44/01 MOTH TRAPPING

RA46 Collect data, lepidoptera, list species

RA46/01 BUTTERFLIES SPECIES LIST

RA46/02 MOTHS SPECIES LIST

RA56 Collect data, odonata, list species

RA56/01 DRAGONFLY SPECIES LIST

RA56/02 DAMSELFLY SPECIES LIST

RA66 Collect data, orthoptera, list species

RA66/01 GRASSHOPPER SPECIES LIST

RA66/02 CRICKET SPECIES LIST

RA76 Collect data, other insects, list species

RA76/01 SOLITARY BEE SPECIES LIST

RA76/02 SOLITARY WASP SPECIES LIST

RA82 Collect data, other invertebrates, survey

RA82/01 ST JAMES' HILL SOLITARY BEE & WASP SURVEY

RA92 Collect data, fauna, survey

RA92/01 NBMP

RA92/02 BAT BOX SURVEY

**E8) To survey and monitor flora to assess management impacts and inform future decision making.**

RF03 Collect data, vegetation monitor

RF03/01 HEATHER COVER AND QUALITY MONITORING

RF16 Collect data, trees/shrubs, list species

RF16/01 TREE SPECIES LIST

RF22 Collect data, other, vascular plants survey

RF22/01 MUSTARD POND GLADE SURVEY

RF22/02 ST JAMES' HILL SURVEY

RF66 Collect data, fungi, list species

RF66/01 FUNGI SPECIES LIST

## **F To safeguard the historic landscape, archaeological features and buildings of Mousehold Heath.**

### **Earthworks and archaeological features**

Earthworks and historical features are vulnerable to encroachment by vegetation and compaction plus erosion from visitors using the site. The features will be maintained by management through the cutting and removal of vegetation, shrubs and trees, where appropriate, using methods sympathetic to the sensitivities of the feature.

Where required by legislation, the work will be done in conjunction with the appropriate local and national agency.

### **Historic buildings and structures**

The historic buildings and structure on the site will be maintained through programmed works and also reactive repairs and maintenance to ensure that they remain in a good condition. Where appropriate and subject to resources, work will be carried out to improve them.

The pavilion will require substantial investment during the lifetime of this management plan to prevent further deterioration of the structure and to ensure that landlord obligations are met.

The toilets are also in poor condition and decision about the future of the toilets will be made during the lifetime of this plan.

Building condition surveys have been completed to inform future decision making and a programme of repairs and maintenance.

### **Historical information**

Information relating to the history of the site and the historic features within it will be collected to inform decision making and to assist with future interpretation of the site.

## **F1) To maintain earthwork features**

### MC03 Manage cultural features, earthwork, by felling, cutting

MC03/01	ST WILLIAMS' CHAPEL - VEGETATION REMOVAL
MC03/02	ST WILLIAMS' CHAPEL - SCRUB TREE REMOVAL

### ML40 Liaise stakeholders, local/national authorities

ML40/03	HISTORIC ENGLAND
ML40/04	NORFOLK ARCHAEOLOGY SERVICE

## **F2) To maintain, and where appropriate, enhance historic buildings**

### MC50 Manage cultural features, historic building/structure

MC50/01	PAVILION
MC50/02	AIRMENS MEMORIAL PLAQUE
MC50/03	BANDSTAND
MC50/04	MOTTRAM MEMORIAL
MC50/05	HISTORIC BOUNDARY MARKERS

MC50/06      PAVILION CONDITION SURVEY

**F3)    To maintain industrial archaeology**

MC70 Manage cultural features, industrial archaeology

MC70/01      OLD QUARRIES

MC70/02      TRAM TRACK

MC81 Manage cultural features, historic landscape, felling/cutting

MC81/01      VIEW FROM MOTTRAM MEMORIAL

MC81/02      BEECH DRIVE

MC81/03      CAVALRY TRACK

**F4)    To collect data relating to the history of Mousehold Heath**

RC01 Collect data, archaeological

RC01/01      ST WILLIAMS' CHAPEL

RC10 Collect data, historic buildings

RC10/01      RANGER'S HOUSE

RC10/02      PAVILION

RC20 Collect data, industrial archaeology

RC20/10      GENERAL

RC30 Collect data, historic landscape

RC30/01      LANDSCAPE



## **G To provide opportunities local communities to be involved in all aspect of our work.**

### **Volunteering**

The work carried out by volunteers is not only important in terms of creating a sense of ownership and responsibility in the local community but is also crucial in achieving the objectives of this plan. Meeting these objectives would not be possible with the available budget and warden resources alone.

A strategic approach to recruiting, retaining and developing volunteers will be taken during the life of the plan to develop this aspect of our work further.

The wardens will also work with other community and volunteer groups managing land adjacent to the heath to develop joint working groups for larger projects. This will also create opportunities to share learning and to provide some variation for the volunteers by working with other groups.

### **G1) To provide and develop volunteering opportunities on the heath and develop volunteers**

#### AP21 Prepare/revise plan strategic planning

AP21/03 VOLUNTEER STRATEGY

#### AT00 Training and management general

AT00/06 VOLUNTEER DEVELOPMENT

#### AT50 Liaise/supervise volunteers

AT50/01 GENERAL

AT50/02 CORPORATE

AT50/03 MOUSEHOLD DEFENDERS

AT50/04 MOUSEHOLD HEATH MOUSEKETEERS

AT50/05 TCV

RH90 Collect data, other activities, general

RH90/05 VOLUNTEERS

### **G2) To develop initiatives with other community/volunteer groups**

#### ML50 Liaise stakeholders, local community/groups

ML50/01 NORWICH FRINGE PROJECT

ML50/02 FRIENDS OF KETTS HEIGHTS

#### AP21 Prepare/revise plan strategic planning

AP21/03 VOLUNTEER STRATEGY

## **H To promote Mousehold Heath to increase awareness, knowledge, understanding and a sense of pride**

## **Information and interpretation**

The provision of information and interpretation on the site is crucial for people to understand what is allowed and not allowed on the heath as well as teaching them about the natural and historical importance of the site.

## **Education**

Young people will have a big role to play in the future of the heath, in terms of using and protecting it. Their understanding of the historical importance of the heath and the habitats and species it contains is crucial. Educational activities on site and in local schools will continue

## **Events**

The heath provides an excellent venue for events for local people. Work will continue to provide a range of onsite events, delivered to increase people's understanding and enjoyment of the heath, alongside working with the Norwich City Council's events team to deliver other events..

## **Media**

It is important that the profile of the heath is maintained as a unique and valuable open space. This will be done working in conjunction with the local press (both broadcast and print) to generate positive promotion of the heath and the work of the Conservators.

The website and social media are also important in terms of raising the profile of the heath and the work. The Norwich City Council web pages will be reviewed and updated to include geographic information system (GIS) data to improve people's understanding of the heath.

### **H1) To provide and maintain signage and interpretative material**

#### ME06 Erect/maintain signs/interpretation boards

ME06/01	FINGER POSTS AND WAYMARKS
ME06/02	GATE ACCESS RESTRICTIONS
ME06/03	INFORMATION PANELS
ME06/04	MOUSEHOLD HEATH WELCOME SIGNS

### **H2) To provide and maintain information trails**

#### ME06 Erect/maintain signs/interpretation boards

ME06/05	NATURE TRAIL
---------	--------------

#### MI10 Inform visitors, onsite information

MI10/04	GEOLOGICAL TRAIL
MI10/06	NATURE TRAIL
MI10/07	BIODIVERSITY TRAIL

### **H3) To inform visitors on site and off site about Mousehold Heath**

#### MI00 Inform stakeholders

MI00/02 WEBSITE

RV70 Create/manage GIS data

RV70/03 GIS DATA SETS

MI10 Inform visitors, onsite information

MI10/01 GENERAL INFORMATION SIGNS

MI10/02 GENERAL VISITOR ENQUIRIES

MI10/03 TEMPORARY MANAGEMENT SIGNS

MI10/05 INTERPRETATIVE PANELS

**H4) To provide educational opportunities on site and off site**

MI00 Inform stakeholders

MI00/01 OFFSITE SCHOOL TALKS

**H5) To work with local media to raise the profile and awareness in the city of Mousehold Heath**

ML70 Liaise stakeholders, media

ML70/01 PRESS

ML70/02 TV

ML70/03 RADIO

**H6) To provide events**

MI60 Provide/manage events

MI60/01 EVENTS

MI60/02 GUIDED WALKS PROGRAMME

**H7) To collect data relating to use of the site**

RH31 Collect data, public use, education

RH31/01 FOREST SCHOOLS

RH31/02 ONSITE EDUCATIONAL VISITS

RH90 Collect data, other activities, general

RH90/01 WEBSITE USE

RH90/02 COUNCIL EVENTS

RH90/04 GUIDED WALKS PROGRAMME

RH90/05 VOLUNTEER CONTRIBUTION



# Mousehold Heath Conservators

**Mousehold Heath Management Plan 2019 – 2028**  
**Appendix 1: 10 year work programme**

Sub code	Proj code	Project	19/20	20/21	21/22	22/23	23/24	24/25	25/26	26/27	27/28
AF00 Finance, general	01	PREPARE ANNUAL BUDGET	X	X	X	X	X	X	X	X	X
AF00 Finance, general	02	BUDGET MONITORING	X	X	X	X	X	X	X	X	X
AF00 Finance, general	03	ELECTRICITY	X	X	X	X	X	X	X	X	X
AF00 Finance, general	04	GAS	X	X	X	X	X	X	X	X	X
AI00 Implement inspection, monitoring site integrity	01	GREEN FLAG AWARD		X	X	X	X	X	X	X	X
AI30 Implement inspection, site safety	01	ANNUAL SITE SAFETY INSPECTION		X	X	X	X	X	X	X	X
AI30 Implement inspection, site safety	02	TREE SAFETY INSPECTION	X	X	X	X	X	X	X	X	X
AI30 Implement inspection, site safety	03	RISK ASSESSMENT		X	X	X	X	X	X	X	X
AP20 Prepare / revise plan, management plans	01	NEW MANAGEMENT PLAN								X	X
AP20 Prepare / revise plan, management plans	02	MANAGEMENT PLAN REVIEW	X	X	X	X	X	X	X	X	X
AP21 Prepare / revise plan, strategic planning	01	ENVIRNOMENTAL STRATEGY	X	X	X	X	X	X	X	X	X
AP21 Prepare / revise plan, strategic planning	02	BENCH AND SEAT PROVISION	X								
AP21 Prepare / revise plan, strategic planning	03	VOLUNTEER STRATEGY						X			
AP21 Prepare / revise plan, strategic planning	04	SIGNAGE AND INTERPRETATION STRATEGY				X					
AP21 Prepare / revise plan, strategic planning	05	ACCESS HUBS					X				
AR30 Prepare correspondence, general	01	GENERAL CORRESPONDENCE	X	X	X	X	X	X	X	X	X
AP50 Prepare / revise plan, safety	01	VEHICLE ON SITE POLICY	X								
AP50 Prepare / revise plan, safety	02	TREE SAFETY MANAGEMENT POLICY		X							
AP60 Prepare plan, annual work	01	ANNUAL WORK PROGRAMME	X	X	X	X	X	X	X	X	X
AP60 Prepare plan, annual work	02	ANNUAL WORK PROGRAMME MONITORING	X	X	X	X	X	X	X	X	X
AP80 Convene meeting, Site Management Committee / advisory group	01	MOUSEHOLD CONSERVATORS MEETING	X	X	X	X	X	X	X	X	X
AP80 Convene meeting, Site Management Committee / advisory group	02	MOUSEHOLD CONSERVATORS MANAGEMENT SUB GROUP MEETING	X	X	X	X	X	X	X	X	X
AP80 Convene meeting, Site Management Committee / advisory group	03	MOUSEHOLD CONSERVATORS ITINERANT	X	X	X	X	X	X	X	X	X
AR01 Prepare report, project review, new projects	01	CAR PARK SURFACING REVIEW							X		
AR01 Prepare report, project review, new projects	02	PUBLIC TOILET PROVISION REVIEW			X						
AR01 Prepare report, project review, new projects	03	FORMAL AND INFORMAL SPORTS PROVISION REVIEW		X							
AR01 Prepare report, project review, new projects	04	SEAT AND BENCH SPONSORSHIP SCHEME	X								
AR01 Prepare report, project review, new projects	05	BRITANNIA CAR PARK REVIEW				X					
AR20 Prepare report, annual progress	01	MOUSEHOLD CONSERVATORS ANNUAL REPORT	X	X	X	X	X	X	X	X	X
AR20 Prepare report, annual progress	02	MOUSEHOLD CONSERVATORS ANNUAL PUBLIC SUMMARY REPORT	X	X	X	X	X	X	X	X	X
AR60 Prepare report, other	00	MOUSEHOLD CONSERVATORS PROJECT APPROVAL AND RECORDING	X	X	X	X	X	X	X	X	X
AR60 Prepare report, other	01	MOUSEHOLD CONSERVATORS QUARTERLY MANAGEMENT UPDATE	X	X	X	X	X	X	X	X	X
AR60 Prepare report, other	02	MOUSEHOLD CONSERVATORS QUARTERLY BUDGET MONITORING REPORT	X	X	X	X	X	X	X	X	X
AR60 Prepare report, other	03	MOUSEHOLD CONSERVATORS ANNUAL WORK PROGRAMME REPORT	X	X	X	X	X	X	X	X	X
AR60 Prepare report, other	04	MOUSEHOLD CONSERVATORS PRECEPT REPORT	X	X	X	X	X	X	X	X	X
AS00 Protect site, legal action	00	LEGAL ENFORCEMENT ACTION	X	X	X	X	X	X	X	X	X



Sub code	Proj code	Project	19/20	20/21	21/22	22/23	23/24	24/25	25/26	26/27	27/28
AS10 Protect site, visitor permit system	01	LICENCES AND PERMITS	X	X	X	X	X	X	X	X	X
AT00 Training and management, general	01	STAFF 1:1s	X	X	X	X	X	X	X	X	X
AT00 Training and management, general	02	STAFF APPRAISAL	X	X	X	X	X	X	X	X	X
AT00 Training and management, general	03	STAFF DEVELOPMENT PLANS	X	X	X	X	X	X	X	X	X
AT00 Training and management, general	04	BEST PRACTICE VISITS	X	X	X	X	X	X	X	X	X
AT00 Training and management, general	05	SAFEGUARDING CHILDREN AND VULNERABLE ADULTS	X	X	X	X	X	X	X	X	X
AT00 Training and management, general	06	VOLUNTEER DEVELOPMENT	X	X	X	X	X	X	X	X	X
AT40 Liaise / supervise staff / contractors	01	CONTRACT MONITORING/IMPROVEMENT NORWICHNORSE ENVIRONMENTAL	X	X	X	X	X	X	X	X	X
AT40 Liaise / supervise staff / contractors	02	CONTRACT MONITORING/IMPROVEMENT NPS NORWICH	X	X	X	X	X	X	X	X	X
AT40 Liaise / supervise staff / contractors	03	CONTRACT MONITORING EXTERNAL CONTRACTORS	X	X	X	X	X	X	X	X	X
AT50 Liaise / supervise volunteers	01	GENERAL	X	X	X	X	X	X	X	X	X
AT50 Liaise / supervise volunteers	02	CORPORATE VOLUNTEERING	X	X	X	X	X	X	X	X	X
AT50 Liaise / supervise volunteers	03	MOUSEHOLD DEFENDERS	X	X	X	X	X	X	X	X	X
AT50 Liaise / supervise volunteers	04	MOUSEHOLD HEATH MOUSKETEERS	X	X	X	X	X	X	X	X	X
AT50 Liaise / supervise volunteers	05	TCV	X	X	X	X	X	X	X	X	X
MC03 Manage cultural features, eathwork, by felling/cutting	02	ST WILLIAMS' CHAPEL - SCRUB/TREE REMOVAL	X	X	X	X	X	X	X	X	X
MC03 Manage cultural features, eathwork, by mowing	01	ST WILLIAMS' CHAPEL - VEGETATION REMOVAL	X	X	X	X	X	X	X	X	X
MC50 Manage cultural features, historic building structure	02	AIRMEN'S MEMORIAL PLAQUE	X	X	X	X	X	X	X	X	X
MC50 Manage cultural features, historic building structure	06	PAVILION CONDITION SURVEY					X				
MC70 Manage cultural features, industrial archaeological	01	OLD QUARRIES	X	X	X	X	X	X	X	X	X
MC70 Manage cultural features, industrial archaeological	02	TRAM TRACK	X	X	X	X	X	X	X	X	X
MC81 Manage cultural features, historical landscape, felling/cutting	01	VIEW FROM MOTTRAM MEMORIAL	X	X	X	X	X	X	X	X	X
MC81 Manage cultural features, historical landscape, felling/cutting	02	BEECH DRIVE	X	X	X	X	X	X	X	X	X
MC81 Manage cultural features, historical landscape, felling/cutting	03	CAVALRY TRACK	X	X	X	X	X	X	X	X	X
MC50 Manage cultural features, historic building structure	04	MOTTRAM MEMORIAL	X	X	X	X	X	X	X	X	X
MC50 Manage cultural features, historic building structure	05	HISTORIC BOUNDARY MARKERS	X	X	X	X	X	X	X	X	X
ME01 Boundary structures	01	GATES, FENCING AND BARRIERS	X	X	X	X	X	X	X	X	X
ME01 Boundary structures	02	BOLLARDS	X	X	X	X	X	X	X	X	X
ME02 Other structures	01	BENCHES/SEATS/PICNIC BENCHES	X	X	X	X	X	X	X	X	X
ME04 Remove rubbish / maintain litter bins	01	LITTER PICKING	X	X	X	X	X	X	X	X	X
ME04 Remove rubbish / maintain litter bins	02	LITTER BINS	X	X	X	X	X	X	X	X	X
ME04 Remove rubbish / maintain litter bins	03	FLY TIPPING	X	X	X	X	X	X	X	X	X
ME06 Erect/maintain signs/interpretation boards	01	FINGER POSTS AND WAYMARKS	X	X	X	X	X	X	X	X	X
ME06 Erect/maintain signs/interpretation boards	02	GATE ACCESS RESTRICTIONS	X	X	X	X	X	X	X	X	X
ME06 Erect/maintain signs/interpretation boards	03	INFORMATION PANELS	X	X	X	X	X	X	X	X	X
ME06 Erect/maintain signs/interpretation boards	04	MOUSEHOLD HEATH WELCOME SIGNS	X	X	X	X	X	X	X	X	X
ME06 Erect/maintain signs/interpretation boards	05	NATURE TRAIL	X	X	X	X	X	X	X	X	X
MC50 Manage cultural features, historic building structure	01	PAVILION	X	X	X	X	X	X	X	X	X

MC50 Manage cultural features, historic building structure	01	BANDSTAND	X	X	X	X	X	X	X	X	X
<b>Sub code</b>	<b>Proj code</b>	<b>Project</b>	<b>19/20</b>	<b>20/21</b>	<b>21/22</b>	<b>22/23</b>	<b>23/24</b>	<b>24/25</b>	<b>25/26</b>	<b>26/27</b>	<b>27/28</b>
ME12 Site buildings, maintain / improve	01	REMOVE GRAFFITI	X	X	X	X	X	X	X	X	X
ME12 Site buildings, maintain / improve	02	BANDSTAND CLEANING	X	X	X	X	X	X	X	X	X
ME12 Site buildings, maintain / improve	03	BANDSTAND MAINTENANCE	X	X	X	X	X	X	X	X	X
ME12 Site buildings, maintain / improve	04	CHANGING ROOMS	X	X	X	X	X	X	X	X	X
ME14 Site buildings, maintain / improve toilets	01	TOILET CLEANING	X	X	X	X	X	X	X	X	X
ME41 Provide / maintain paths	01	MAIN PATHS	X	X	X	X	X	X	X	X	X
ME41 Provide / maintain paths	03	CYCLEWAYS	X	X	X	X	X	X	X	X	X
ME41 Provide / maintain paths	04	ACCESS FOR ALL PATHS	X	X	X	X	X	X	X	X	X
ME44 Provide / maintain car parks	01	CYCLE STANDS	X	X	X	X	X	X	X	X	X
ME44 Provide / maintain car parks	02	CAR PARK SURFACING	X	X	X	X	X	X	X	X	X
ME70 Provide / maintain staff facilities, general	01	WARDEN OFFICE ACCOMMODATION OPTIONS APPRAISAL		X							
ME70 Provide / maintain staff facilities, general	02	WARDEN OFFICE ACCOMMODATION	X	X	X	X	X	X	X	X	X
MH00 Manage habitat, forest / woodland / scrub, by coppicing	01	COPPICING	X	X	X	X	X	X	X	X	X
MH03 Manage habitat, forest / woodland / scrub, aiding natural regeneration	01	NATURAL REGENERATION	X	X	X	X	X	X	X	X	X
MH04 Manage habitat, forest / woodland / scrub, maintaining ride/path/glade	01	GLADE MANAGEMENT, MAINTAIN	X	X	X	X	X	X	X	X	X
MH04 Manage habitat, forest / woodland / scrub, maintaining ride/path/glade	02	GLADE MANAGEMENT, CREATION	X	X	X	X	X	X	X	X	X
MH04 Manage habitat, forest / woodland / scrub, maintaining ride/path/glade	03	PAVILION FIRE BREAK	X	X	X	X	X	X	X	X	X
MH08 Manage habitat, forest / woodland / scrub, by managing dead wood	01	DEAD & DECAYING WOOD	X	X	X	X	X	X	X	X	X
MH09 Manage habitat, forest / woodland / scrub, by other activities	01	SIGNIFICANT TREES	X	X	X	X	X	X	X	X	X
MH12 Manage habitat, grassland, by mowing	01	MAINTAIN ACID GRASSLAND	X	X	X	X	X	X	X	X	X
MH14 Manage habitat, grassland, by scrub control	01	RESTORE ACID GRASSLAND	X	X	X	X	X	X	X	X	X
MH29 Manage habitat, controlling invasive species, by other activities	01	LAUREL	X	X	X	X	X	X	X	X	X
MH29 Manage habitat, controlling invasive species, by other activities	02	JAPANESE KNOTWEED	X	X	X	X	X	X	X	X	X
MH29 Manage habitat, controlling invasive species, by other activities	03	HIMALAYAN BALSAM	X	X	X	X	X	X	X	X	X
MH29 Manage habitat, controlling invasive species, by other activities	04	SYCAMORE	X	X	X	X	X	X	X	X	X
MH29 Manage habitat, controlling invasive species, by other activities	05	RHODODENDRON	X	X	X	X	X	X	X	X	X
MH31 Manage habitat, heath, by scrub / tree control	01	SCRUB & TREE REMOVAL	X	X	X	X	X	X	X	X	X
MH35 Manage habitat, heath, by cultivation to acc leaching	01	HUMUS STRIPPING	X	X	X	X	X	X	X	X	X
MH39 Manage habitat, heath, by other activities	01	BRACKEN REMOVAL	X	X	X	X	X	X	X	X	X
MH39 Manage habitat, heath, by other activities	02	ROTATIONAL CUTTING COMMON GORSE	X	X	X	X	X	X	X	X	X
MH39 Manage habitat, heath, by other activities	03	COMMON GORSE REMOVAL	X	X	X	X	X	X	X	X	X
MH60 Manage habitat, open water / rivers, general	01	VINEGAR POND	X	X	X	X	X	X	X	X	X
MH60 Manage habitat, open water / rivers, general	02	WILDLIFE POND	X	X	X	X	X	X	X	X	X
MI00 Inform stakeholders	01	OFF SITE SCHOOL TALKS	X	X	X	X	X	X	X	X	X
MI00 Inform stakeholders	02	WEBSITE	X	X	X	X	X	X	X	X	X
MI10 Inform visitors, onsite information	01	GENERAL INFORMATION SIGNS	X	X	X	X	X	X	X	X	X

MI10 Inform visitors, onsite information	02	GENERAL VISITOR ENQUIRIES	X	X	X	X	X	X	X	X	X	X
MI10 Inform visitors, onsite information	03	TEMPORARY MANAGEMENT SIGNS	X	X	X	X	X	X	X	X	X	X
<b>Sub code</b>	<b>Proj code</b>	<b>Project</b>	<b>19/20</b>	<b>20/21</b>	<b>21/22</b>	<b>22/23</b>	<b>23/24</b>	<b>24/25</b>	<b>25/26</b>	<b>26/27</b>	<b>27/28</b>	
MI20 Inform visitors, educational information	04	GEOLOGICAL TRAIL	X	X	X	X	X	X	X	X	X	X
MI20 Inform visitors, educational information	05	INTERPRETATIVE PANELS	X	X	X	X	X	X	X	X	X	X
ML40 Liaise stakeholders, local / national authorities	03	HISTORIC ENGLAND	X	X	X	X	X	X	X	X	X	X
ML40 Liaise stakeholders, local / national authorities	04	NORFOLK ARCHAEOLOGY SERVICE	X	X	X	X	X	X	X	X	X	X
MI20 Inform visitors, educational information	06	NATURE TRAIL	X	X	X	X	X	X	X	X	X	X
MI20 Inform visitors, educational information	07	BIODIVERSITY TRAIL	X	X	X	X	X	X	X	X	X	X
MI60 Provide/manage events	01	EVENTS	X	X	X	X	X	X	X	X	X	X
MI60 Provide/manage events	02	GUIDED WALKS PROGRAMME	X	X	X	X	X	X	X	X	X	X
MI60 Provide/manage events	03	FOOTBALL PITCH PROVISION	X	X	X	X	X	X	X	X	X	X
MI60 Provide/manage events	04	FOOTBALL BOOKINGS MANAGEMENT	X	X	X	X	X	X	X	X	X	X
ML70 Liaise stakeholders, media	01	PRESS	X	X	X	X	X	X	X	X	X	X
ML70 Liaise stakeholders, media	02	TV	X	X	X	X	X	X	X	X	X	X
ML70 Liaise stakeholders, media	03	RADIO	X	X	X	X	X	X	X	X	X	X
ML70 Liaise stakeholders, media	04	TWITTER	X	X	X	X	X	X	X	X	X	X
ML00 Liaise stakeholders, owners / occupiers	01	ZAKS RESTAURANT	X	X	X	X	X	X	X	X	X	X
ML00 Liaise stakeholders, owners / occupiers	04	GAS PIPELINE	X	X	X	X	X	X	X	X	X	X
ML30 Liaise stakeholders, neighbours	01	BRITANNIA CAFÉ	X	X	X	X	X	X	X	X	X	X
ML30 Liaise stakeholders, neighbours	02	RANGER'S HOUSE	X	X	X	X	X	X	X	X	X	X
ML40 Liaise stakeholders, local / national authorities	01	NORWICH AREA TRANSPORT STRATEGY	X	X	X	X	X	X	X	X	X	X
ML40 Liaise stakeholders, local / national authorities	02	NORWICH CITY COUNCIL - AREA MANAGEMENT TEAM	X	X	X	X	X	X	X	X	X	X
ML40 Liaise stakeholders, local / national authorities	06	NATURAL ENGLAND HLS AGREEMENT	X	X	X	X						
ML40 Liaise stakeholders, local / national authorities	08	NATURAL ENGLAND RENEGOTIATE HLS AGREEMENT			X	X						
ML60 Liaise stakeholders, emergency services	01	NORFOLK CONSTABULARY	X	X	X	X	X	X	X	X	X	X
ML60 Liaise stakeholders, emergency services	02	NORFOLK FIRE AND RESCUE SERVICE	X	X	X	X	X	X	X	X	X	X
MM20 Acquire / maintain tools /equipment	00	TOOLS AND EQUIPMENT	X	X	X	X	X	X	X	X	X	X
MP00 Patrol, boundaries	01	SITE PRESENCE	X	X	X	X	X	X	X	X	X	X
MP00 Patrol, general	02	SITE BOUNDARIES AND HOTSPOTS	X	X	X	X	X	X	X	X	X	X
MS30 Manage species, mammal	01	BAT BOXES	X	X	X	X	X	X	X	X	X	X
MS70 Manage species, Lepidoptera	01	WHITE LETTER HAIRSTREAK	X	X	X	X	X	X	X	X	X	X
RA06 Collect data, mammals, list species	01	MAMMAL SPECIES LIST	X	X	X	X	X	X	X	X	X	X
RA12 Collect data, birds, survey	01	CBC	X	X	X	X	X	X	X	X	X	X
RA16 Collect data, birds, list species	01	BIRD SPECIES LIST	X	X	X	X	X	X	X	X	X	X
RA26 Collect data, herptiles, list species	01	REPTILE SPECIES LIST	X	X	X	X	X	X	X	X	X	X
RA42 Collect data, Lepidoptera, survey	01	BUTTERFLY CONSERVATION SURVEY	X	X	X	X	X	X	X	X	X	X
RA44 Collect data, Lepidoptera, count / estimate / measure / census	01	MOTH TRAPPING	X	X	X	X	X	X	X	X	X	X
RA46 Collect data, Lepidoptera, list species	01	BUTTERFLY SPECIES LIST	X	X	X	X	X	X	X	X	X	X



RA46 Collect data, Lepidoptera, list species	02	MOTH SPECIES LIST	X	X	X	X	X	X	X	X	X	X
RA56 Collect data, Odonata, list species	01	DRAGONFLYSPECIES LIST	X	X	X	X	X	X	X	X	X	X
RA56 Collect data, Odonata, list species	02	DAMSEL FLY SPECIES LIST	X	X	X	X	X	X	X	X	X	X
<b>Sub code</b>	<b>Proj code</b>	<b>Project</b>	<b>19/20</b>	<b>20/21</b>	<b>21/22</b>	<b>22/23</b>	<b>23/24</b>	<b>24/25</b>	<b>25/26</b>	<b>26/27</b>	<b>27/28</b>	
RA66 Collect data, Orthoptera, list species	01	GRASSHOPPER SPECIES LIST	X	X	X	X	X	X	X	X	X	X
RA66 Collect data, Orthoptera, list species	02	CRICKET SPECIES LIST	X	X	X	X	X	X	X	X	X	X
RA76 Collect data, other insects, list species	01	SOLITARY BEE SPECIES LIST	X	X	X	X	X	X	X	X	X	X
RA76 Collect data, other insects, list species	02	SOLITARY WASP SPECIES LIST	X	X	X	X	X	X	X	X	X	X
RA82 Collect data, other invertebrates, survey	01	ST JAMES' HILL BUMBLEBEE SURVEY	X	X	X	X	X	X	X	X	X	X
RA92 Collect data, fauna, survey	01	NATIONAL BAT MONITORING PROGRAMME	X	X	X	X	X	X	X	X	X	X
RA92 Collect data, fauna, survey	02	BAT BOX SURVEY	X	X	X	X	X	X	X	X	X	X
RF03 Collect data, vegetation, monitor	01	HEATHER COVER AND QUALITY MONITORING	X	X	X	X	X	X	X	X	X	X
RF16 Collect data, trees / shrubs, list species	01	TREE SPECIES LIST	X	X	X	X	X	X	X	X	X	X
RF22 Collect data, other vascular plants, survey	01	MUSTARD GLADE SURVEY	X	X	X	X	X	X	X	X	X	X
RF22 Collect data, other vascular plants, survey	02	ST JAMES' HILL SURVEY	X	X	X	X	X	X	X	X	X	X
RF66 Collect data, fungi, list species	01	FUNGI SPECIES LIST	X	X	X	X	X	X	X	X	X	X
RH31 Collect data, public use, education	01	FOREST SCHOOLS	X	X	X	X	X	X	X	X	X	X
RH31 Collect data, public use, education	02	ONSITE EDUCATIONAL VISTS	X	X	X	X	X	X	X	X	X	X
RH35 Collect data, public use, trespass / theft / damage	01	ILLEGAL ACTIVITIES CRIME	X	X	X	X	X	X	X	X	X	X
RH90 Collect data, other activities, general	04	GUIDED WALKS & EVENTS	X	X	X	X	X	X	X	X	X	X
RH90 Collect data, other activities, general	05	VOLUNTEERS	X	X	X	X	X	X	X	X	X	X
RV70 Create / manage GIS data	03	GIS DATA SETS	X	X	X	X	X	X	X	X	X	X
RC01 Collect data, archaeological	01	ST WILLIAMS CHAPEL	X	X	X	X	X	X	X	X	X	X
RC10 Collect data, historic buildings	01	RANGERS HOUSE	X	X	X	X	X	X	X	X	X	X
RC10 Collect data, historic buildings	02	PAVILION	X	X	X	X	X	X	X	X	X	X
RC20 Collect data, industrial archaeology	01	GENERAL	X	X	X	X	X	X	X	X	X	X
RC30 Collect data, historical landscapes	01	LANDASCAPE	X	X	X	X	X	X	X	X	X	X



If you would like this information in another language or format such as large print, CD or Braille please visit [www.norwich.gov.uk/Intran](http://www.norwich.gov.uk/Intran) or call 0344 980 3333

**Produced by Norwich City Council – February 2019**

[www.norwich.gov.uk](http://www.norwich.gov.uk)



# Mousehold Heath Conservators

**Mousehold Heath Management Plan Summary 2019-2028**



# Chair's foreword

It is a great pleasure to present the new Mousehold Heath Management Plan.

It builds on the excellent work done over the last ten years and outlines the new vision and objectives for the next ten and has been produced in partnership between the Mousehold Heath Conservators and officers at Norwich City Council.

The new plan creates a link from the vision through to the individual projects which will support the delivery of the eight management objectives. A high level work plan identifies the priority projects to be undertaken each year and will be used to form a more detailed annual work programme.

It is a dynamic working document and will be reviewed on an ongoing basis by the Conservators because priorities can change throughout the lifetime of a long term plan.

The key priorities going forward include continuing to enhance the biodiversity of the site through the restoration of nationally declining habitats, building on the important work around increasing understanding of the heath through volunteering opportunities and educational programmes as well as ensuring the site offers a safe and welcoming environment for all its visitors.

Despite financial challenges and incidents which have resulted in the destruction of habitats and wildlife, I feel the heath is in a better place now than it was five years ago and in a very strong place to meet the challenges it will likely face over the next ten years.

I would like to personally thank all of the amazing volunteers who regularly give up their time to help look after the heath, the Mousehold Heath Wardens, my fellow conservators and officers of the council who support the work of the committee. Because of their inspiring dedication and hard work the heath is the wonderful and unique place we see today.

Cllr Marion Maxwell  
Chair of Mousehold Heath Conservators



*Marion F. Maxwell*

## Mousehold Heath Conservators

Mousehold Heath was given to Norwich City Council (then known as the local corporation) in 1880 by the church to look after on behalf of the citizens of Norwich. The City of Norwich Mousehold Heath, Scheme Confirmation Act was passed by Parliament in 1884. The Mousehold Heath Conservators were established following the passing of the act to maintain and preserve Mousehold Heath.

Byelaws made under the City of Norwich Act 1984 made further provision for the regulation and maintenance of Mousehold Heath by the Mousehold Heath Conservators.

There are 12 Conservators appointed as follows; 9 appointed by the Council (at least 7 of whom must be councillors), 1 from the Mousehold Heath Defenders, 1 from the Norwich Society and 1 appointed by an organisation interested in the conservation of the environment in the city.

The Mousehold Heath Conservators meet four times a year and cover the costs of managing the heath through a precept to the council.



## Management planning

Managing change in the natural environment, preventing the loss of habitats or creating and improving them takes place over many years.

The management plan sets out the long term objectives for a site, where changes in the management committee can take place annually, to ensure continuity of management. The plan will enable the Conservators to:

- manage the site effectively
- identify the management required to meet the objectives
- provide a framework for decision making and setting policy
- identify budget requirements
- support grant funding applications
- develop work programmes.

A management plan is produced taking into consideration the environmental, cultural and historical attributes of the site along with the visitors it serves, which collectively identify the importance of Mousehold Heath as an open space within a city.

It has been ten years since the introduction of the first Mousehold Heath management plan covering the period 2008-2013 which was revised in 2013 to cover the period 2013 – 2018.

This current document is not a complete re-write of the original management plan (agreed through public consultation), as the majority of information within it is still applicable. It has been updated and developed to build on the successes achieved over the last 10 years.

During the timescale covered by a management plan changes in legislation, best practice, financial climate and technology, can change.

As can trends in the way people wish to use a site. A management plan is a dynamic document which through the annual work plan will enable management to be flexible, adapting to changes in constraints and opportunities, whilst still working towards the vision and objectives which have been defined for the next 10 years.

## A vision for Mousehold Heath

‘The Mousehold Conservators are committed to safeguarding the long term future of Mousehold Heath as a high quality and accessible natural area for residents and visitors to the city to enjoy.’

‘To manage the heath in a way that protects and enhances the valuable historic and natural features of the site, and provides opportunities for all to be involved in looking after and learning about the site.’

## Management objectives

- A) To ensure Mousehold Heath is a welcoming place for people to visit.
- B) To protect Mousehold Heath and ensure that it is a safe and secure place to visit.
- C) To ensure that Mousehold Heath is clean and well maintained.
- D) To manage Mousehold Heath in a way that has a positive impact on the environment.
- E) To improve habitats and the natural environment for wildlife to enhance the biodiversity of Mousehold Heath.
- F) To safeguard the historic landscape, archaeological features and buildings of Mousehold Heath.
- G) To provide opportunities for local communities to be involved in in all aspect of our work.
- H) To promote Mousehold Heath to increase awareness, knowledge, understanding and a sense of pride.

## Mousehold Heath

Mousehold Heath is a unique open space made up of grassland, woodland, heathland and recreational open space within the city. In Tudor times, Mousehold Heath stretched as far as South Walsham and had a boundary of 35km, and up until the 1900s it was predominantly open heathland.



Mousehold Heath is now 88 hectares (184 acre) in area, of which a relatively small proportion is now heathland and not woodland.



The site has played an important part in Norwich's history and is a diverse part of the city's cultural and natural heritage, shaped by its geology, history and previous and current use.

The Mousehold Heath you see today has been influenced by the way the heath has been used in the past including being used for grazing livestock such as cattle, sheep and pigs, gathering fuel, gravel extraction and quarrying and also brick making.

The site has a variety of habitats including mature woodland, specimen trees, acid grassland, heathland, scrub and aquatic environments which provide a range of conditions suitable for a variety of plant and animal species, including some which are nationally in decline. Mousehold Heath is a Local Nature Reserve (LNR) and County Wildlife Site (CWS).

The Mousehold Conservators use traditional management techniques such as coppicing and pollarding when managing trees, to look after the site alongside more modern techniques such as humus stripping when trying to increase the extent of heather cover on the heath. The management work is carried out by the Mousehold wardens, volunteers and contractors.



Mousehold Heath has important historical links with the city. The body of William of Norwich was found on the heath. It was suspected he was the victim of a ritual murder and supposedly attained the status of saint and martyr. The heath has been used as a campsite during rebellion, as a military training ground on more than one occasion in its history and was the site of two military aircraft crashes during more recent conflict.

Although important for its wildlife and history, it is much more than a museum or a nature reserve. It is a space that is highly valued as a place where people can enjoy a feeling of being in the countryside whilst still being in the city. It is a place where people can walk, play sport, learn about nature and history, attend an event, or just unwind from the pace of city life.





## A valued open space

Mousehold Heath is used throughout the year by local residents and also people from outside of Norwich and Norfolk. People are attracted to the site because of the sense of being in the countryside whilst in a city, its wildlife, its history and also the events and activities which take place on the site throughout the year.



The site is easily accessed by visitors, the majority of whom, it would seem, come from the city, through observation and conversations with them on site. The site boundary is unfenced with a large number of established access points and paths.



No cycling is allowed on the heath apart from on the Pink and Orange pedalways which are designated cycle routes. There are three bus services that can be used to access the heath at the time of writing the plan.

## Visitor facilities (MAP 1 - Facilities)

- A bandstand with seasonal concerts
- Cycle parking
- Football pitch and changing rooms
- Easy access paths are located at Hill Farm rack, Britannia Road car park to Mottram Memorial viewpoint loop and Valley Drive to Gurney Road
- Seating, benches and picnic tables
- Four car parking areas
- Public toilets (adjacent to the pavilion)
- Football pitch
- The Fountain Ground has toilet and changing room facilities (for the use of organised sports teams only)
- Nature trail and orienteering routes
- Earth heritage trail
- Refreshment facilities including Zaks restaurant and an ice-cream van concession adjacent to the Fountain Ground sports pitch, Gurney Road.
- Combined litter/dog waste bins
- Public benches in various locations
- Interpretation and information panels





## Community involvement

A community approach to the management of the heath encourages local people to be involved with the management of the site. In the last year residents and visitors have contributed in a variety of different ways - on an individual basis acting as 'eyes and ears', reporting problems, collecting litter, surveying, leading walks and doing practical management tasks. In 2018 this totalled more than 4200 volunteer hours.



The wardens work effectively local schools on site, running educational programmes and assisting students with college placements and providing them with practical work experience.



The use of the heath as a Forest School is supported and used by children from Mousehold Avenue infant School, George White Junior School and Parkside Infant School.



The wardens also go into local schools to talk with children about Mousehold Heath.

An annual programme of guided walks is delivered and seasonal wildlife surveys involving local community groups, students and residents are undertaken.





## Map 1: Facilities

### Access points

Although much of the heath is 'informal countryside' there is a need to ensure that key access points are maintained and key information is provided about the heath and who it is managed by. This will increase understanding of the site and visitors enjoyment of it.

### Paths

The majority of paths on the heath are natural surfaces.

The vegetation on path boundaries will be maintained to prevent encroachment and paths becoming inaccessible.

### Fountain Ground 'The heart of the heath'

Review the main formal recreational area of the heath containing the Fountain Ground and decide how it is used in the future, with regards to visitor facilities and informal recreation and play.

### Bandstand

A condition assessment of the bandstand will be completed to enable a proactive maintenance plan to be developed.

The bandstand is cleaned twice a year in April and September.

### Changing room provision

The future use of the changing rooms may need to be reviewed depending on the outcome of the formal and informal sports provision.

### Football pitch

A decision will be made on the future provision of the facility taking in to account the level of use, other local provision and the cost of providing it in relation to the income received.

This will also include consideration of other possible recreational uses for the area.

### Toilet block

The heath has one public toilet block located at the Fountain Ground car park and in very close proximity to Zaks restaurant.

The toilet block requires considerable investment to improve the quality of provision. A decision on the future of the toilet block will be made alongside other decisions relating to the heart of the heath.

### Car parks

Car parks are surfaced with compacted stone and regraded on an annual basis.

A more effective solution will be explored during the life of this plan.





## Map 2: Cultural features

### Events

To continue to develop and deliver a range of events, activities, and guided walks at different times of the year and weekends/days appropriate to the heath.

### The Pavilion

Locally listed, the Pavilion was built as a team room in approximately 1901. A condition survey of the pavilion has been undertaken and will inform a planned programme of works to maintain the exterior of the property.

### Pavilion fire break

Scrub and overhanging trees will be cut from around pavilion and removed from site to reduce the fire risk to the building.

### The view from Mottram Memorial

The novelist R.H. Mottram had an association with the heath and this is the location for his memorial.

A clear view of the city will be maintained, free from obstruction by controlling vegetation and tree encroachment at the site on St. James' Hill.

### Site of St William's Chapel

The chapel was refounded in 1168 following the supposed martyrdom of St William of Norwich in 1144. All scrub including brambles and saplings should be cut on a regular basis to prevent them spreading and causing root damage to the earthworks. Large trees at risk of damaging the earthworks will be removed.

### Tram Track

The tram track was laid during World War One to carry munitions from Thorpe Station to the airfield on the drill ground (Heartsease).

Encroaching vegetation and trees will be removed within 2m from either side to allow the sun to penetrate to ground level.

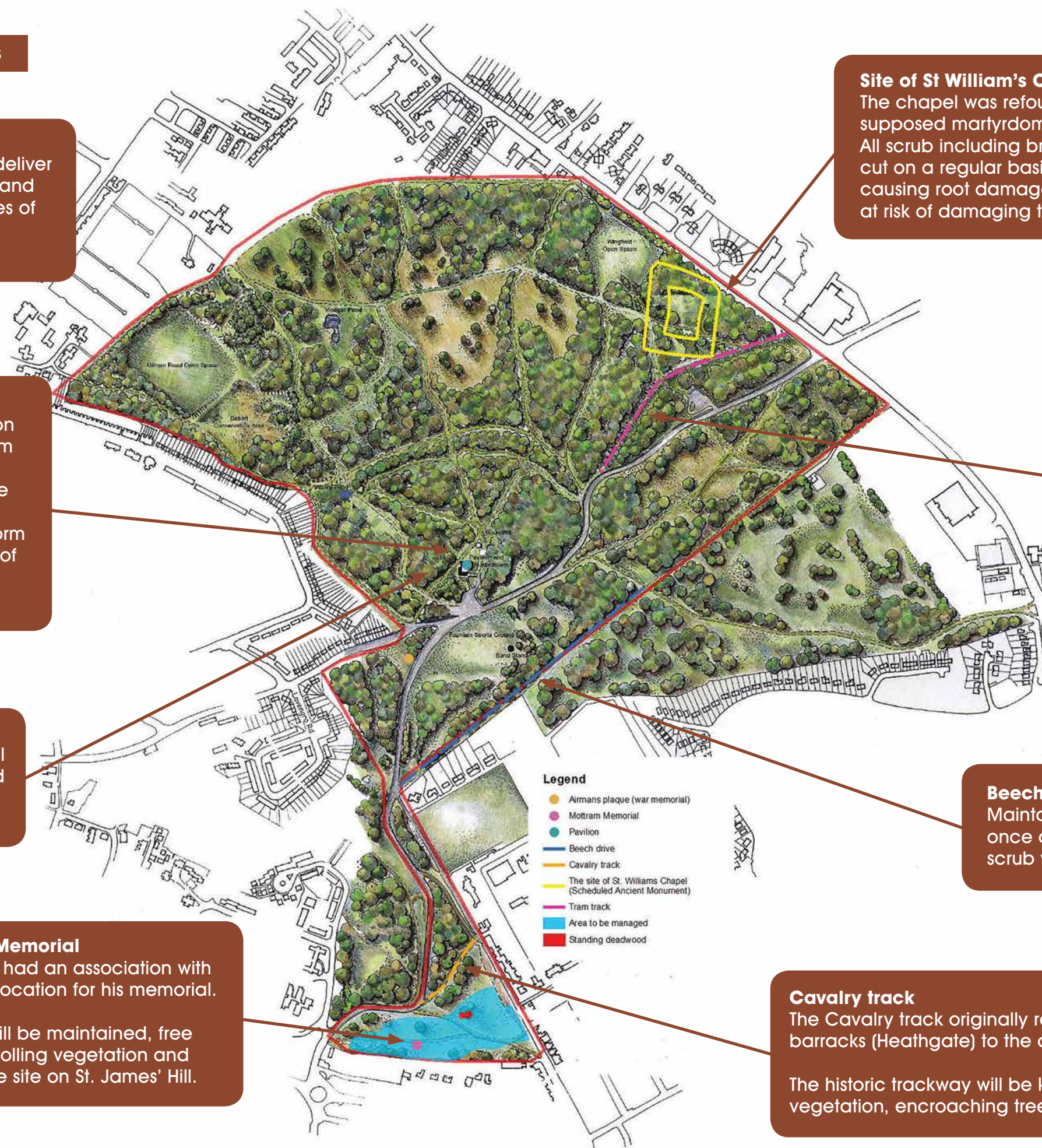
### Beech Drive

Maintain the track by cutting vegetation once a year and encroaching trees and scrub when required in the autumn.

### Cavalry track

The Cavalry track originally ran from the cavalry barracks (Heathgate) to the drill ground (Heartsease).

The historic trackway will be kept open by cutting vegetation, encroaching trees and scrub when required.





### Map 3: Habitat management

#### Natural regeneration of the woodland

No planting of trees will take place and the woodland will regenerate naturally. Invasive alien species such as sycamore and rhododendron will be controlled.

#### Dead and decaying wood

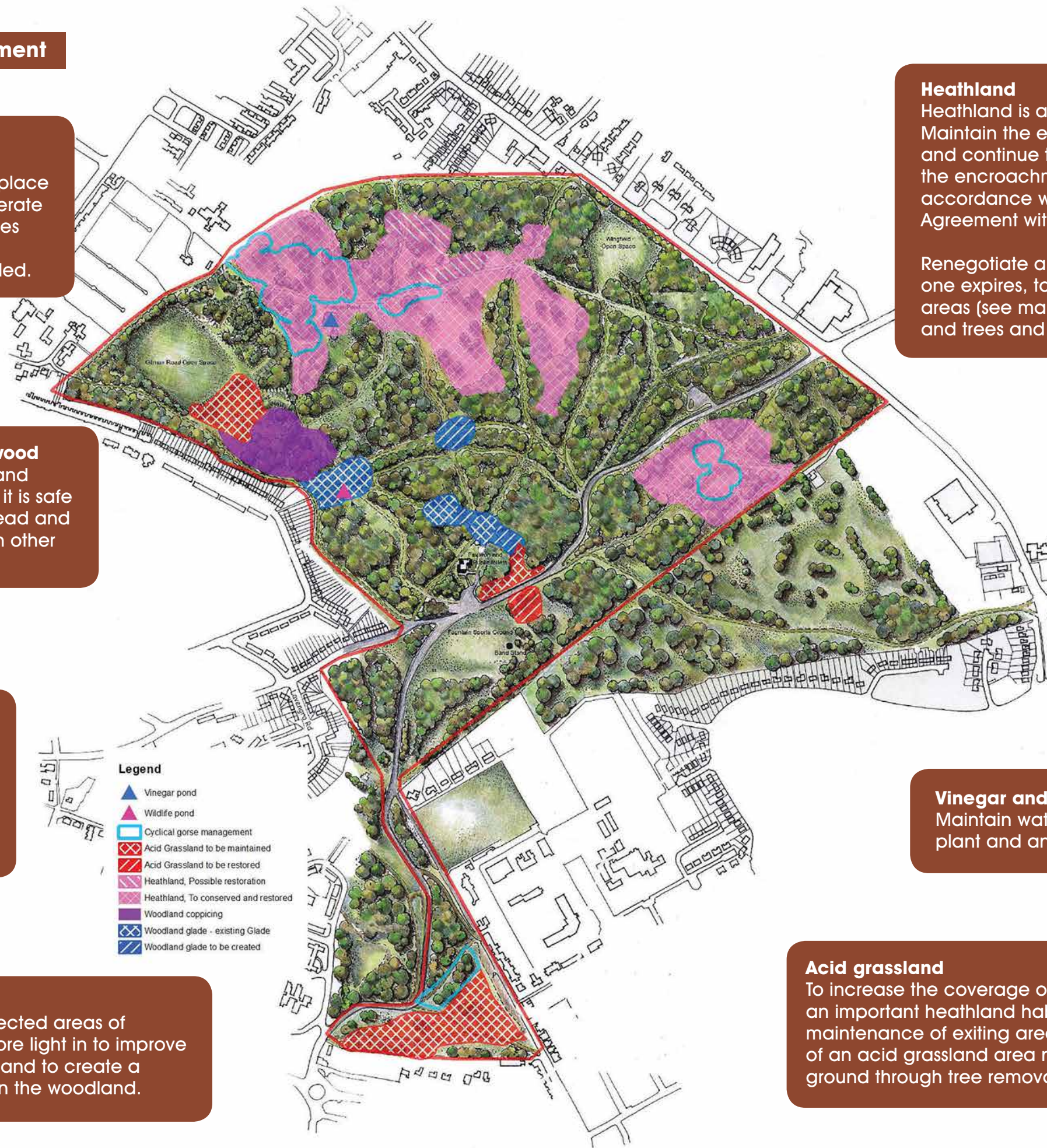
Leave standing dead and decaying wood where it is safe to do so and create dead and decaying wood piles in other appropriate areas.

#### Glade management

Existing glades will be maintained and linked through the creation of new glades. Realignment of paths to provide 'quite' glades to benefit wildlife will be considered where appropriate.

#### Coppicing

Coppice and thin selected areas of woodland to allow more light in to improve the diversity of plants and to create a varied age structure in the woodland.



#### Heathland

Heathland is a rare and nationally declining habitat. Maintain the existing areas of heathland (see map) and continue to improve the quality by managing the encroachment of saplings gorse and bracken in accordance with the Higher Level Stewardship (HLS) Agreement with English Nature.

Renegotiate a new HLS agreement when the existing one expires, to restore further derelict heathland areas (see map), through the removal of saplings and trees and stripping off the humus layer.

#### Rotational cutting of common gorse

Develop and maintain a diverse age structure and balance between the ratio of heather to gorse in heath areas.

Gorse is being cut on a 9 year rotation.

#### Vinegar and wildlife ponds

Maintain water levels and remove non-native plant and animal species.

#### Acid grassland

To increase the coverage of acid grassland an important heathland habitat, through the maintenance of exiting areas and the restoration of an acid grassland area near the fountain ground through tree removal and cutting.



## 10 Year work programme – one off projects

See page 4 for the full list of objectives.

Objective	Project	Year									
		19/ 20	20/ 21	21/ 22	22/ 23	23/ 24	24/ 25	25/ 26	26/ 27	27/ 28	
B	Volunteer strategy						x				
A	Produce signage and interpretation strategy				x						
A	Develop access hubs					x					
B	Tree safety management policy review		x								
A	Car park surfacing review							x			
B	Public toilet provision review			x							
B	Formal and informal sports provision review		x								
B	Develop seat/bench sponsorship scheme	x									
A	Britannia car park review				x						
F	Natural england – hls projects delivered	x	x	x	x						
F	Natural england – renegotiate hls agreement			x	x						

© Crown Copyright and database right 2019. Ordnance Survey 100019747.



If you would like this information in another language or format such as large print, CD or Braille please visit [www.norwich.gov.uk/Intran](http://www.norwich.gov.uk/Intran) or call 0344 980 3333

**Produced by Norwich City Council – February 2019**

[www.norwich.gov.uk](http://www.norwich.gov.uk)